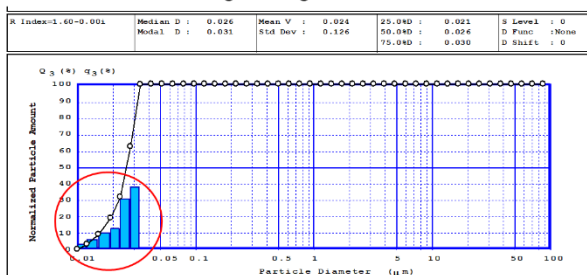
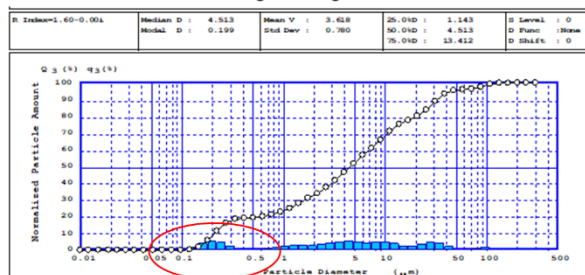


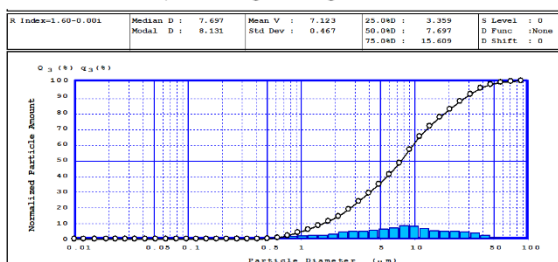
Blue coloured shell, 2 g loading



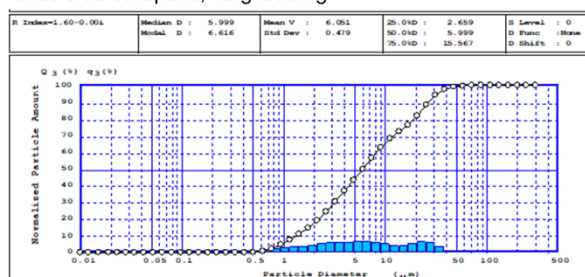
Blue coloured shell, 12.5 g loading



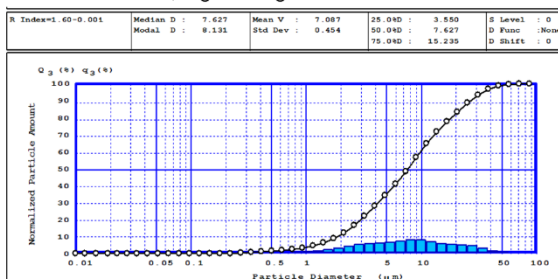
White crab carapace, 12 g loading



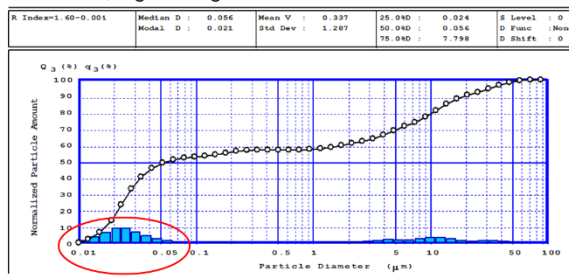
Blue crab carapace, 12 g loading



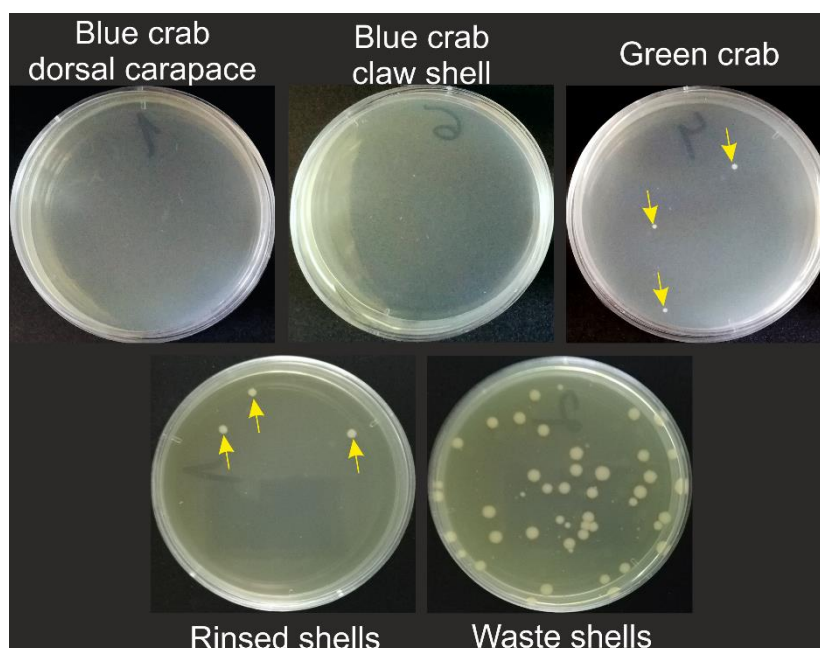
Green crab shell, 2 g loading



Red shell, 2 g loading



**Figure S1.** Results of DLS particle size distribution measurements of selected shell parts. The nano-sized fraction of the blue and red shells are indicated by red ovals.



**Figure S2.** Plates with *Enterococcus* spp (small colonies) and *E. coli* (large colonies). Cultures in the presence of powdered crab shells as indicated. Yellow arrows point the CFU (colony forming units).