

## Supporting Information

# Enhancing the Performance of Quantum Dot Light-Emitting Diodes Using Solution-Processable Highly Conductive Spinel Structure $\text{CuCo}_2\text{O}_4$ Hole Injection Layer

Min Ho Park <sup>1,2</sup>, Min Gye Kim <sup>1,2</sup>, Jin Hyun Ma <sup>1,2</sup>, Jun Hyung Jeong <sup>1,2</sup>, Hyoun Ji Ha <sup>1,2</sup>, Wonsik Kim <sup>3</sup>,  
Soohyung Park <sup>3,4</sup> and Seong Jun Kang <sup>1,2,\*</sup>

<sup>1</sup> Department of Advanced Materials Engineering for Information and Electronics,  
Kyung Hee University, Yongin 17104, Republic of Korea

<sup>2</sup> Integrated Education Program for Frontier Materials (BK21 Four), Kyung Hee  
University, Yongin 17104, Republic of Korea

<sup>3</sup> Advanced Analysis Center, Korea Institute of Science and Technology, 5 Hwarang-ro  
14-gil, Seongbuk-gu, Seoul 02792, Republic of Korea

<sup>4</sup> Division of Nano & Information Technology, KIST School, University of Science and  
Technology (UST), Seoul 02792, Republic of Korea

\* Correspondence: junkang@khu.ac.kr

## **Index**

**Figure S1.** Crystallographic structure of  $AB_2O_4$  spinel

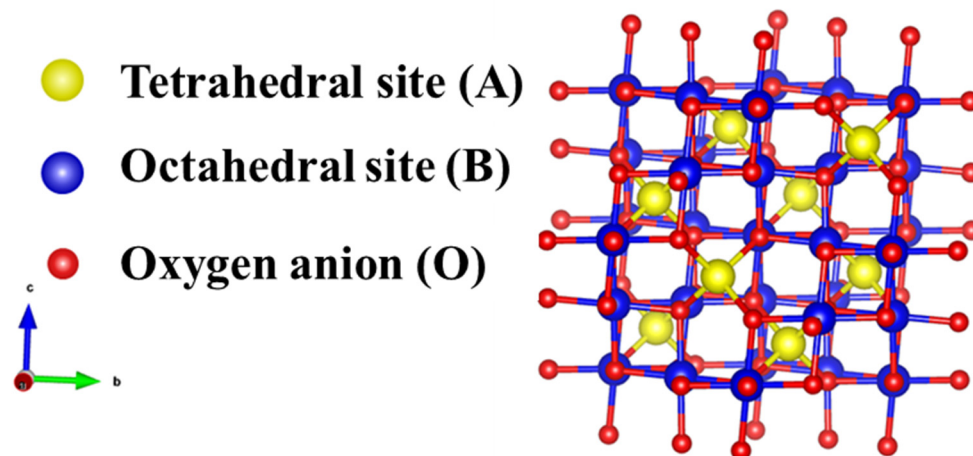
**Figure S2.** (a) The optical band gap of CdSe/ZnS green QDs. (b) The Photoluminescence spectra of CdSe/ZnS green QDs.

**Figure S3.** The optical band gap of TFB was estimated using the Tauc plot

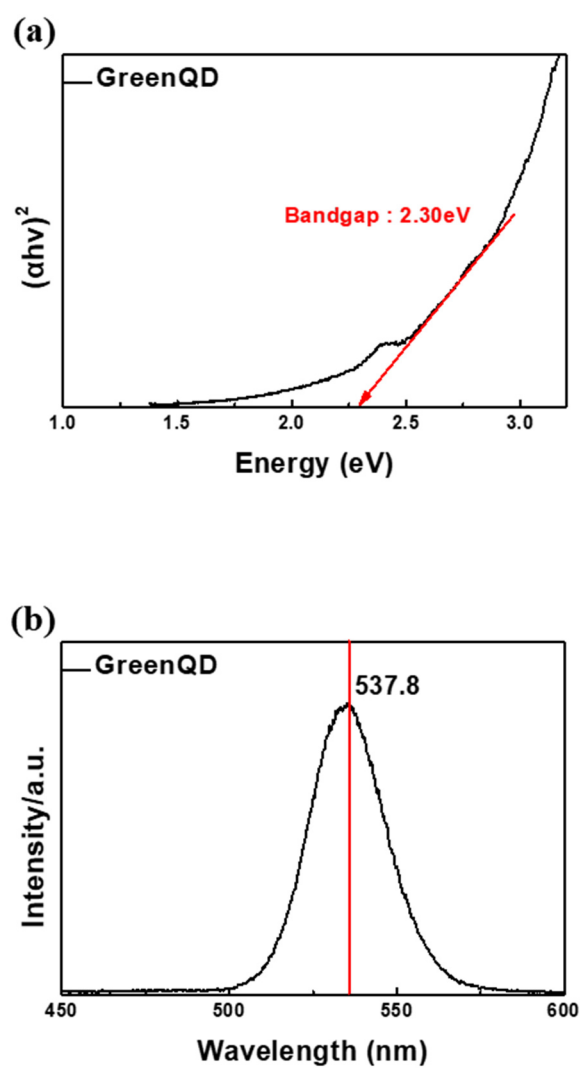
**Figure S4.** EDS mapping image of various elements (C, O, S, In, Co, Cu, Zn and Se) in the  $CuCo_2O_4$  HIL based-QLED

**Figure S5.** EDS line scan data of atomic percent

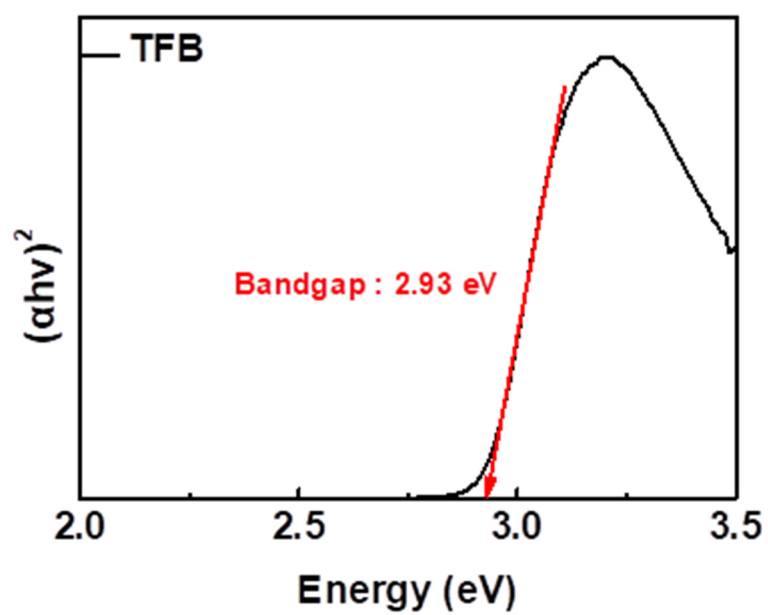
**Figure S6.** Normalized EL spectra of QLED at the maximum luminance



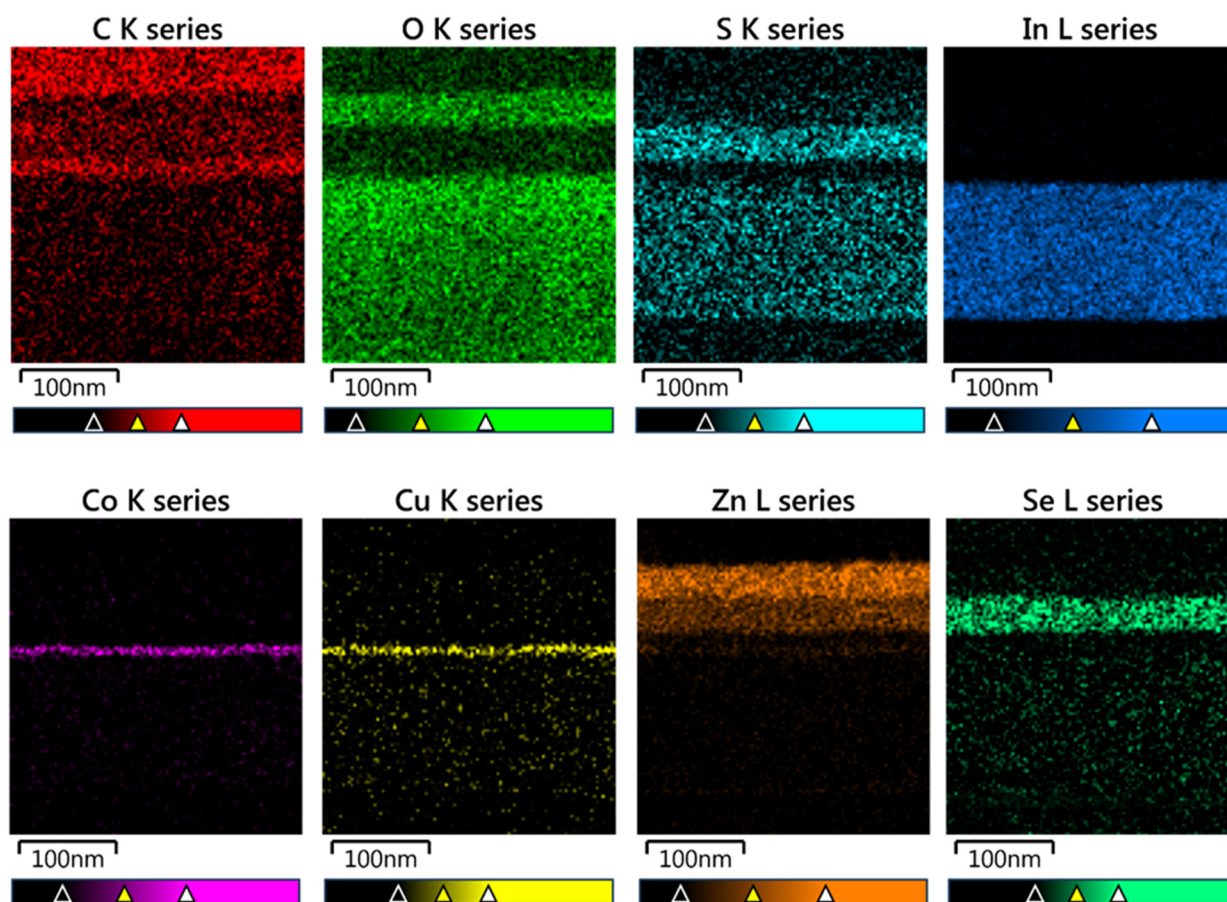
**Figure S1.** Crystallographic structure of AB<sub>2</sub>O<sub>4</sub> spinel



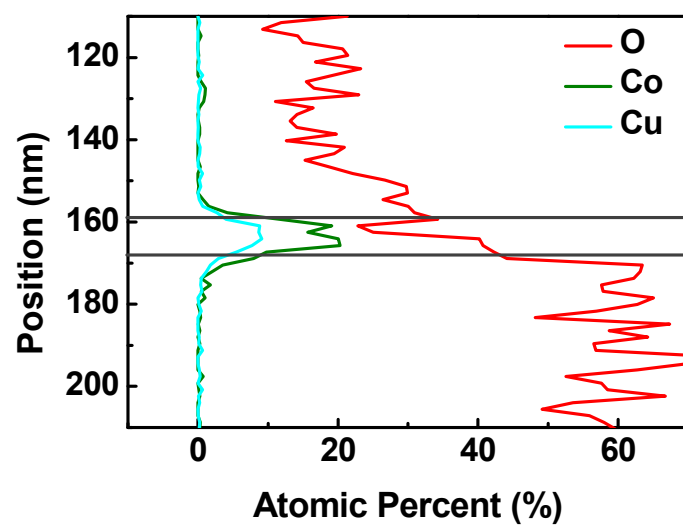
**Figure S2.** (a) The optical band gap of CdSe/ZnS green QDs. (b) The Photoluminescence spectra of CdSe/ZnS green QDs



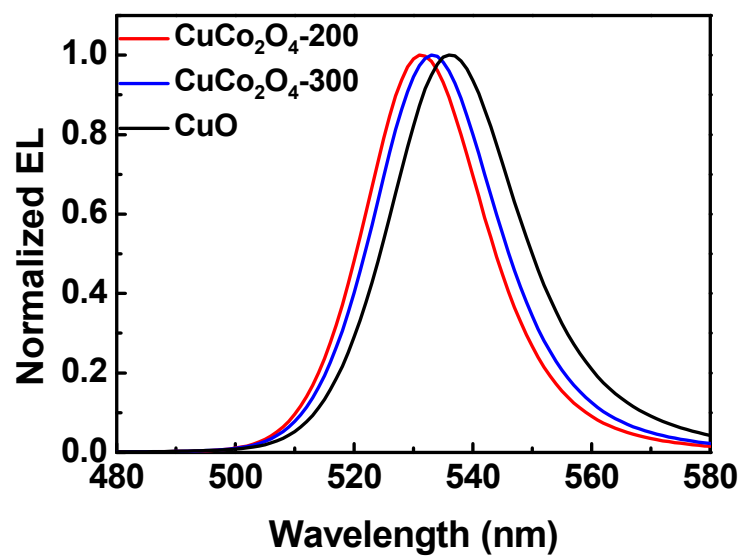
**Figure S3.** The optical band gap of TFB was estimated using the Tauc plot



**Figure S4.** EDS mapping image of various elements (C, O, S, In, Co, Cu, Zn and Se) in the  $\text{CuCo}_2\text{O}_4$  HIL based-QLED



**Figure S5.** EDS line scan data of atomic percent



**Figure S6.** Normalized EL spectra of QLED at the maximum luminance