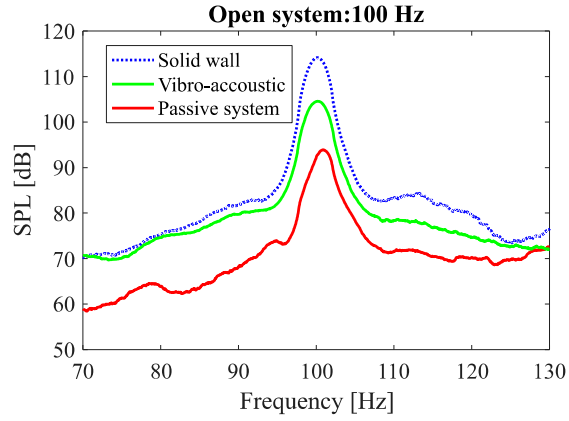
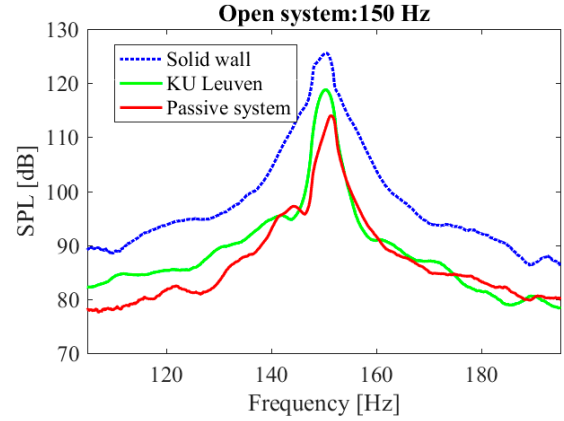


Supplementary Materials

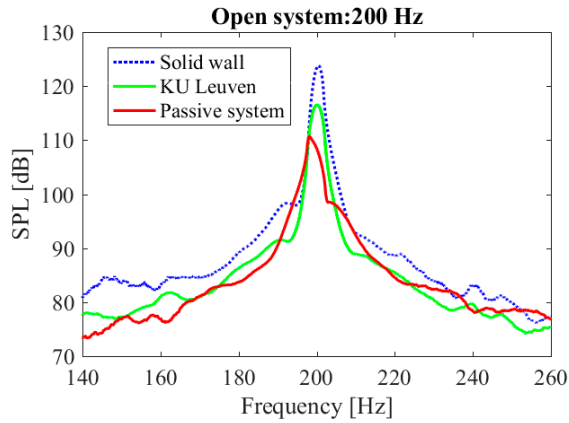
S.1. More results



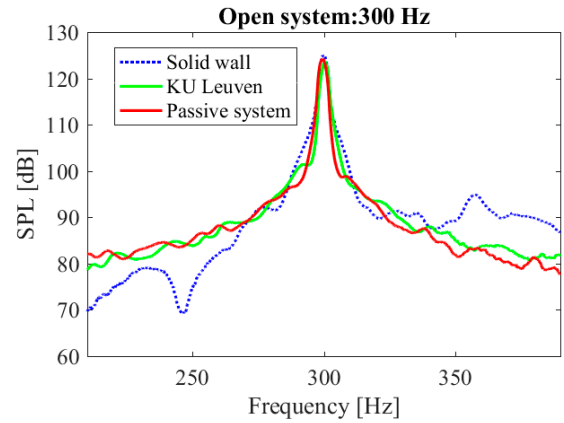
(a)



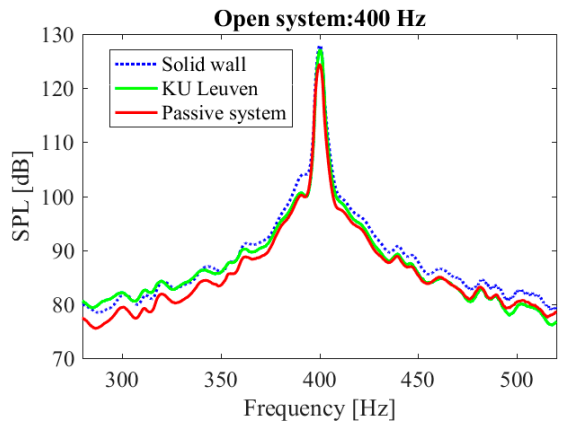
(b)



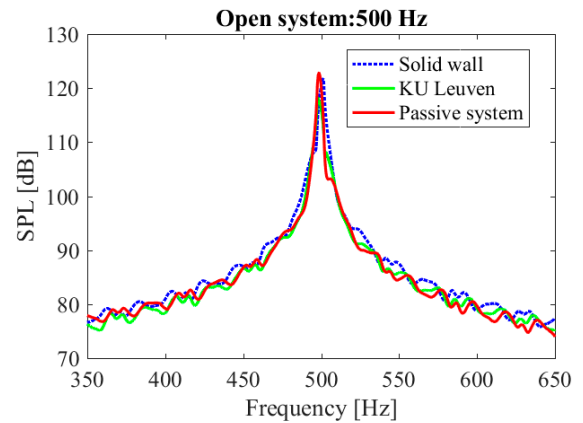
(c)



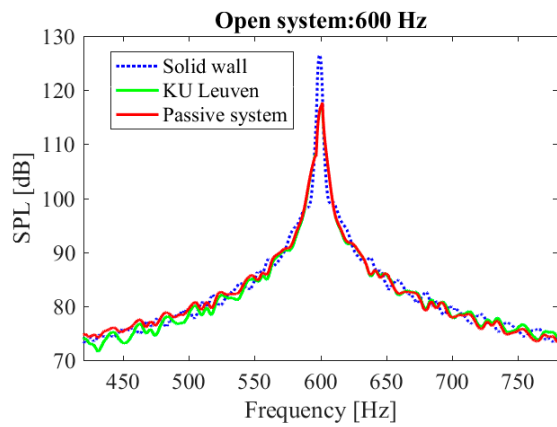
(d)



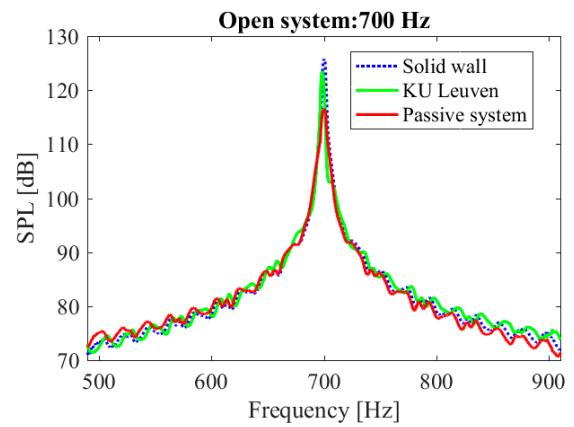
(e)



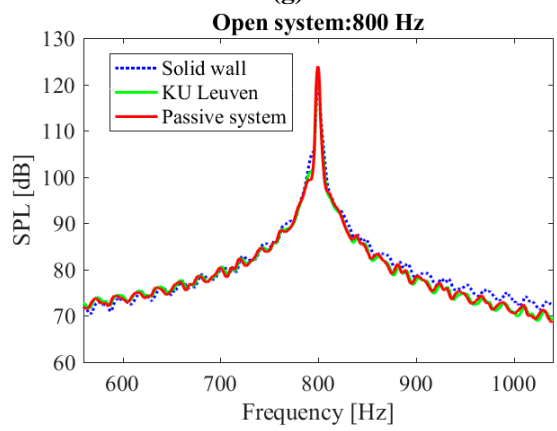
(f)



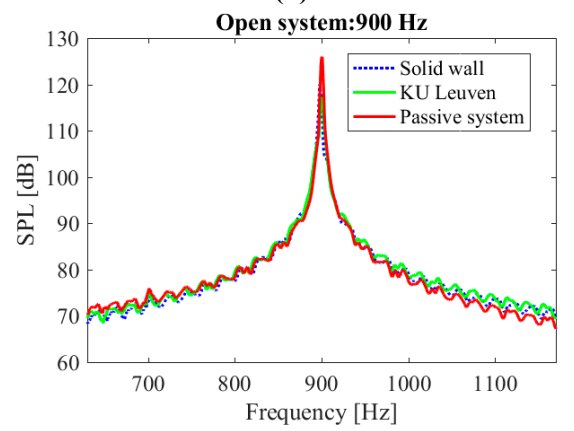
(g)



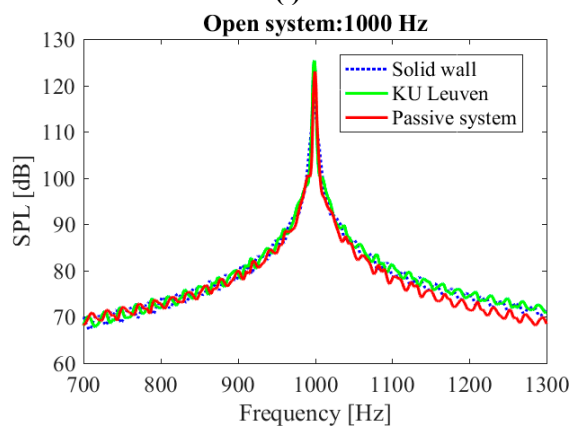
(h)



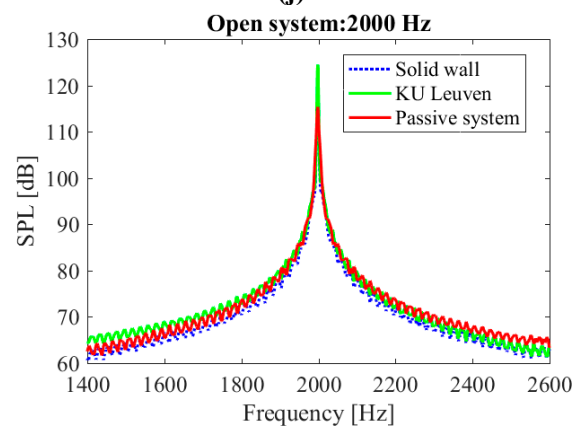
(i)



(j)



(k)



(l)

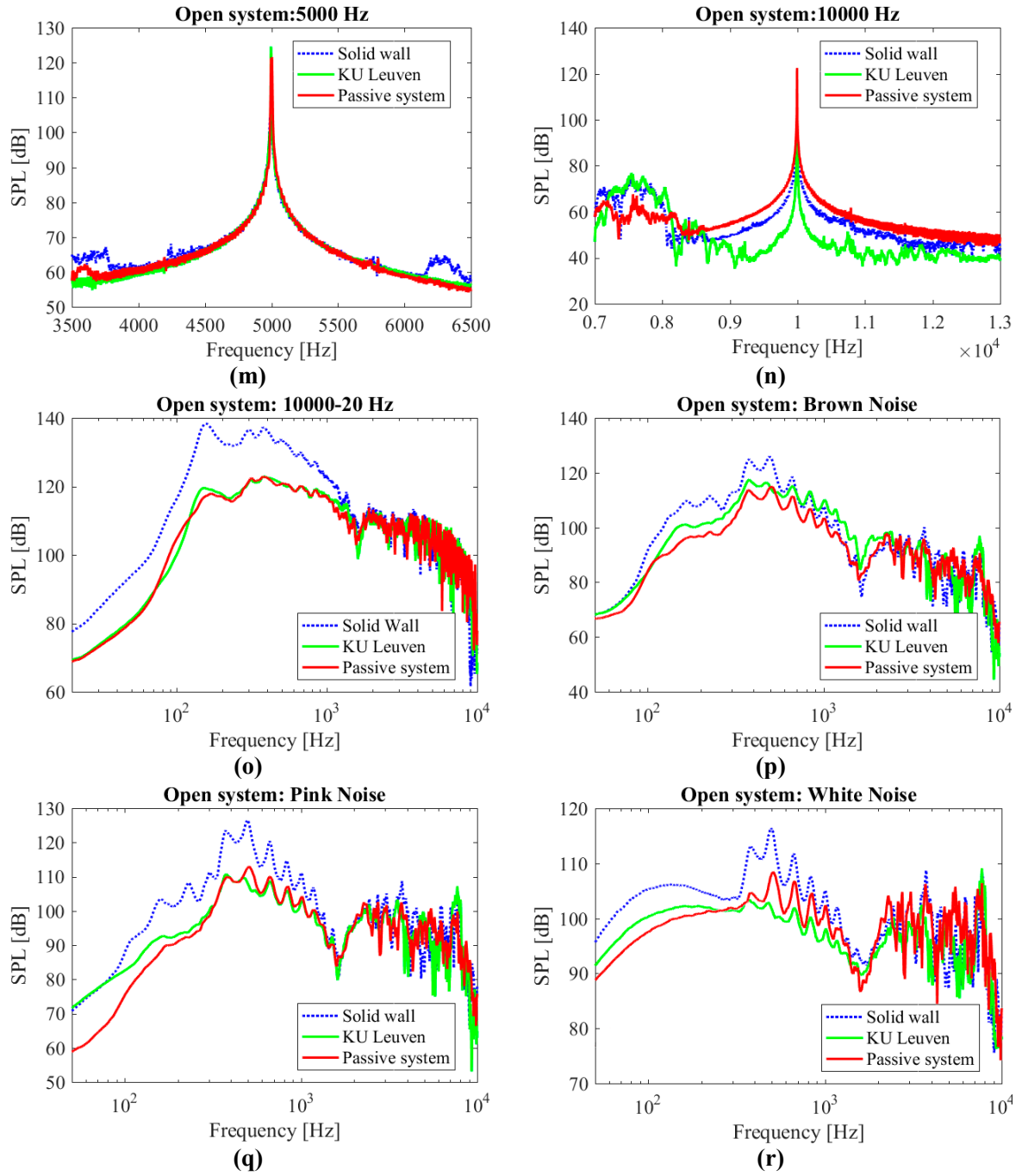


Figure S1: Measured noise amplitude levels in the open system setup for different noise samples including pink and brown noise, isolated frequencies and frequency sweep from 10000 - 20 Hz showing the amount of attenuation achieved for each case. KU Leuven refers to vibro-acoustic metamaterial developed by Claeys et al. [1]

Reference

1. Claey's, C., E. Deckers, B. Pluymers, and W. Desmet, *A lightweight vibro-acoustic metamaterial demonstrator: Numerical and experimental investigation*. Mechanical Systems and Signal Processing, 2016. **70-71**: p. 853-880.