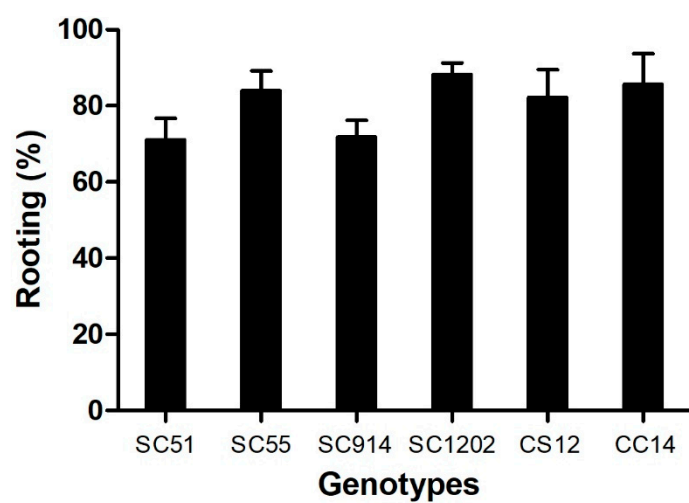


Supplementary Data



Supplementary Figure S1. Rooting percentages of *Castanea sativa* × *C. crenata* hybrids (SC51, SC55, SC914, SC1202), *C. sativa* (CS12; Origin: TRAGSA, Spain) and *C. crenata* (CC14; Origin: TRAGSA, Spain) after rooting with adapted MMN liquid medium. Data correspond to the means of 3 rooting events ($n = 40$ to 140 per rooting event). Bars correspond to standard error.



Supplementary Figure S2. Chestnut hybrids of SC1202 (A) and SC55 (B) genotypes (*Castanea sativa* × *C. crenata*) after 2 years in the field.