

Supplementary Materials

Table S1 The averages of the temperature and humidity in the first data collection June 30th 2022 in a two times collections (SPME and cartridge collection).

First field trip 30.6.2022		Sampling SPME (14:00-15:00)	Sampling Cartridges (15:30-16:30)
tree 1.3m	Temp [°C]	26.3	26.0
	Humidity [%]	67.6	67.5
tree 4m	Temp [°C]	25.2	25.7
	Humidity [%]	69.8	71.8
S_control	Temp [°C]	25.3	25.3
	Humidity [%]	71.3	70.4
W_control	Temp [°C]	24.7	25.1
	Humidity [%]	72.7	71.2
SE_control	Temp [°C]	24.8	25.1
	Humidity [%]	69.2	69.2

Table S2 The averages of the temperature and humidity in the second data collection August 24th 2022 in a two times collections (SPME and cartridge collection).

Second field trip 24.8.2022		SPME sampling (12:10-12:25)	Cartridges sampling (16:00-16:15)
tree 1.3m	Temp [°C]	20.0	21.0
	Humidity [%]	85.8	61.5
tree 4m	Temp [°C]	19.6	21.0
	Humidity [%]	84.0	61.5
W_control	Temp [°C]	20.4	22.1
	Humidity [%]	81.8	82.3
N_control	Temp [°C]	20.1	21.3
	Humidity [%]	83.3	90.3

Logging area [ha]

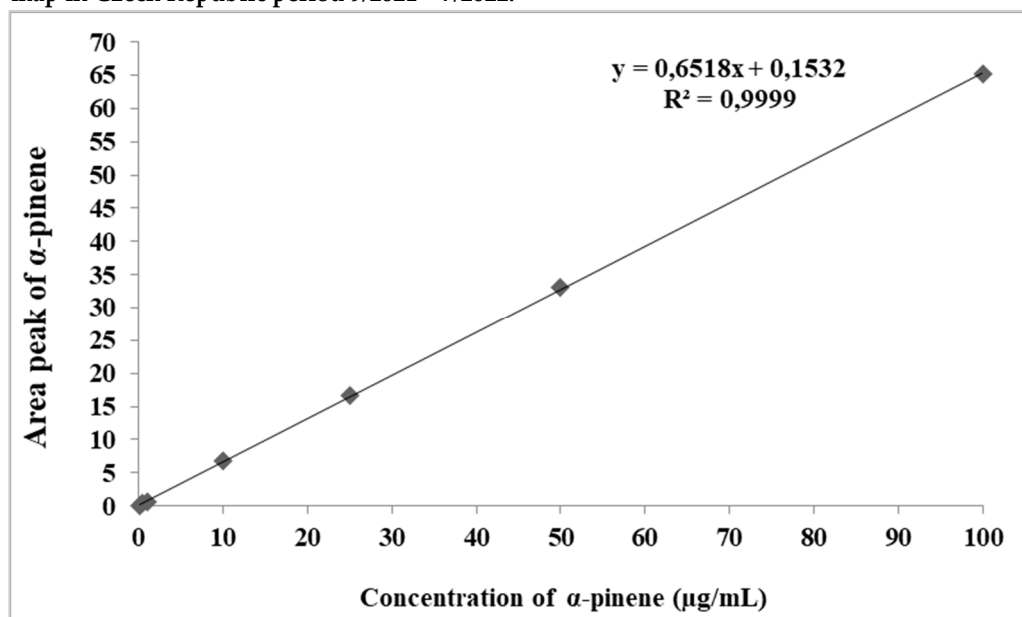
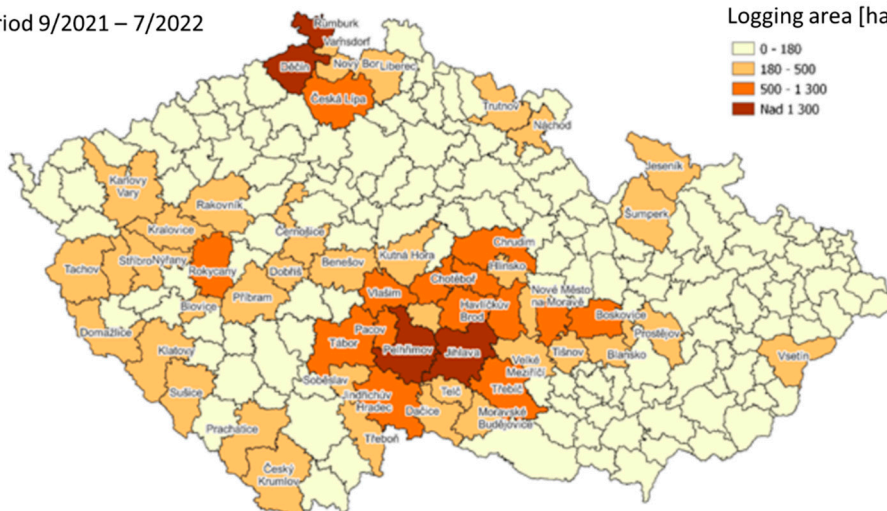


Figure S2 Calibration curve of α -pinene. Constructed using commercial standard of α -pinene diluted in hexane at 0.1; 0.5; 1; 10; 25; 50 and 100 $\mu\text{g/mL}$.