

Supplementary material

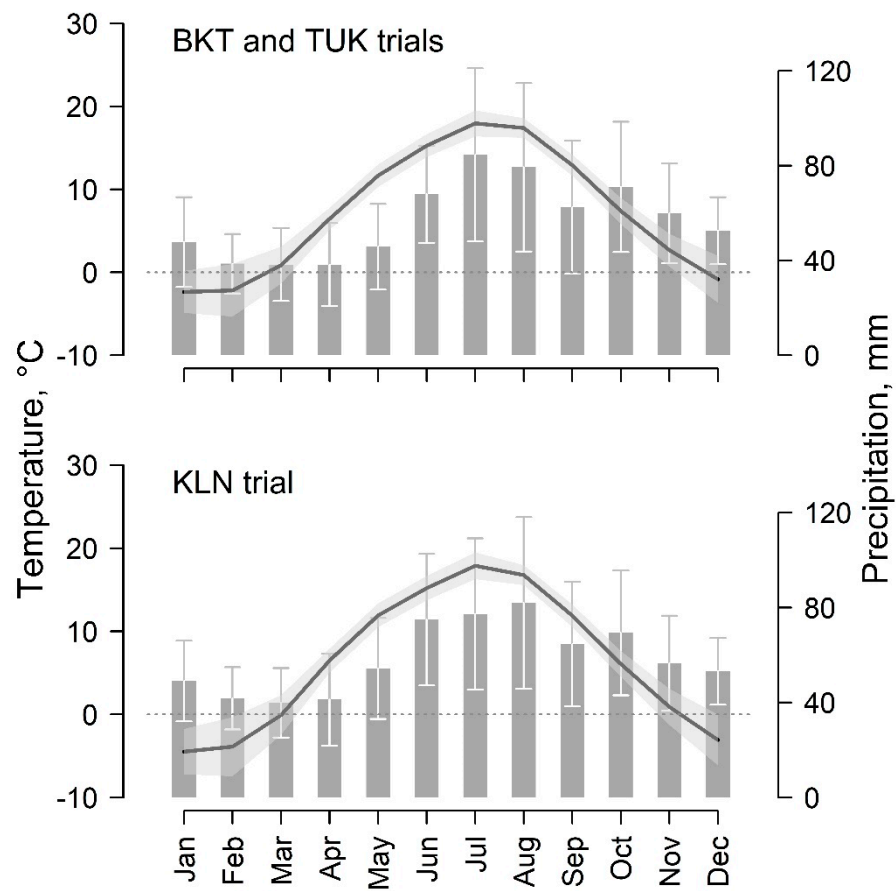


Figure S1. Climatic description of the trials. Mean monthly temperature (line) and precipitation (bars) with their standard deviations (whiskers and polygon) for the period 1988–2017 are shown.

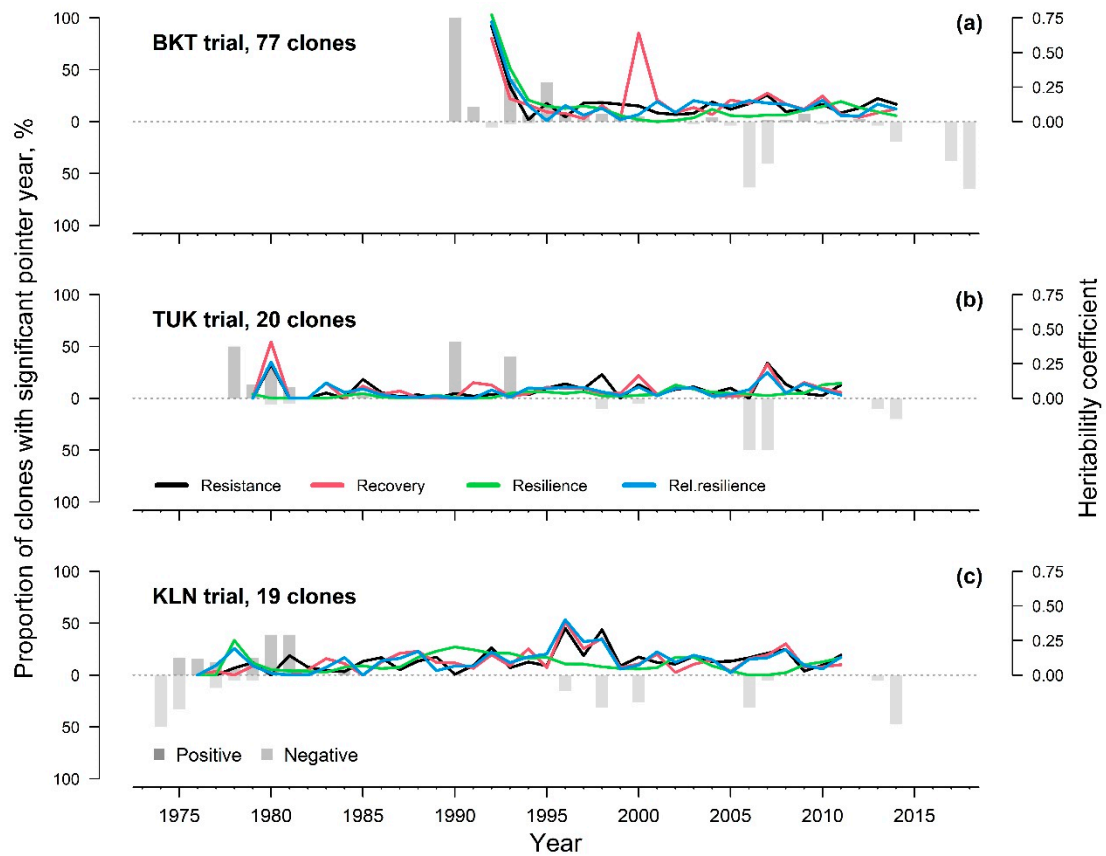


Figure S2. The proportion of clones showing “significant” pointer year in TRW in the studied clonal plantations of local plus-trees of Norway spruce in Latvia (bars). Lines indicate broad sense clonal heritability (H^2) of the resilience components (resistance, recovery, resilience and relative resilience) of TRW calculated on annual basis. Heritability coefficients are calculated for the periods represented by ≥ 5 clones and ≥ 50 observations.