

Figure S1. Flow chart illustrating the protocol to produce resistance bacterial strains and test their susceptibility to mbps

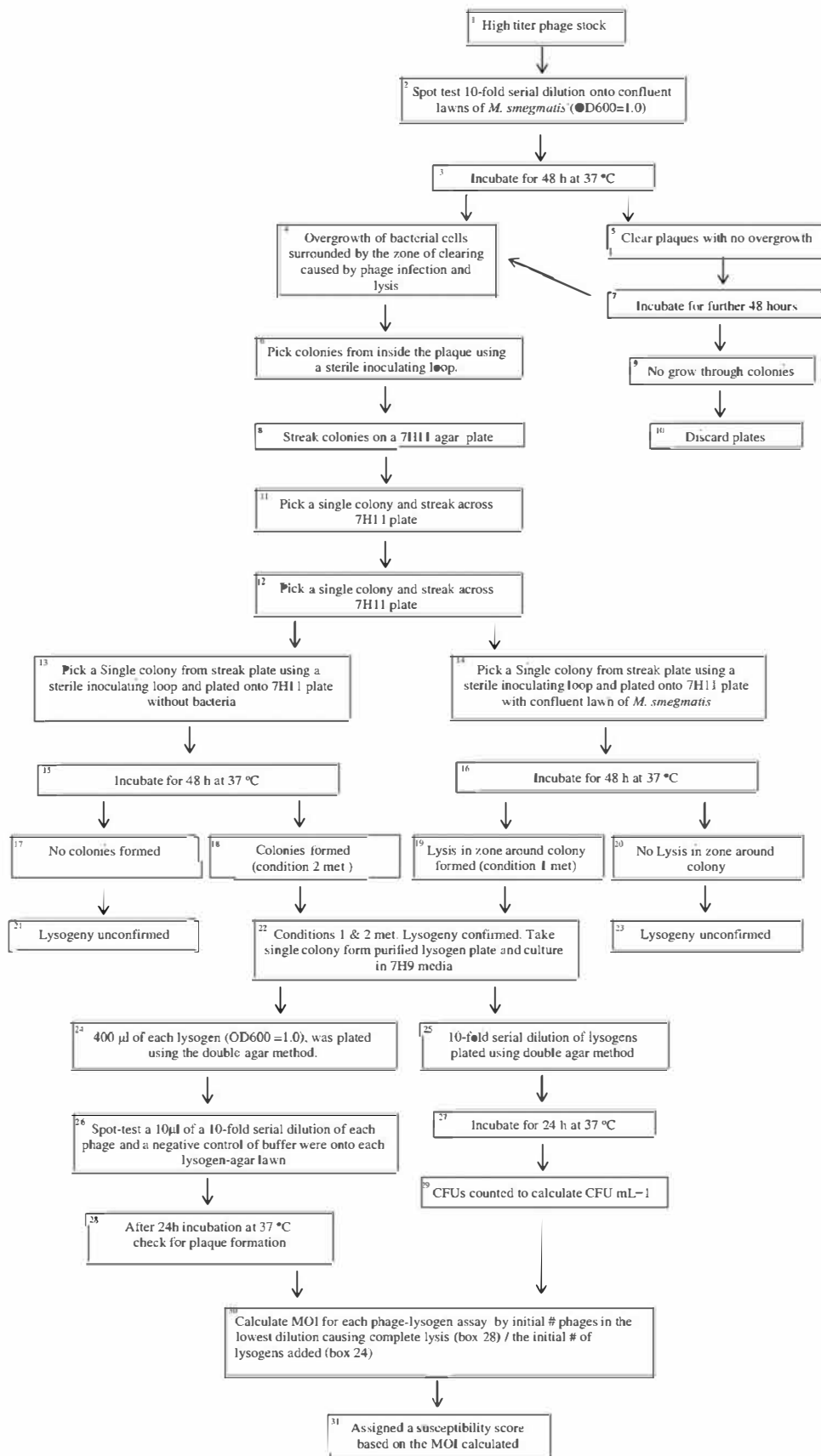


Figure S2. Flow chart illustrating the protocol to produce lysogens and test their susceptibility to mbps

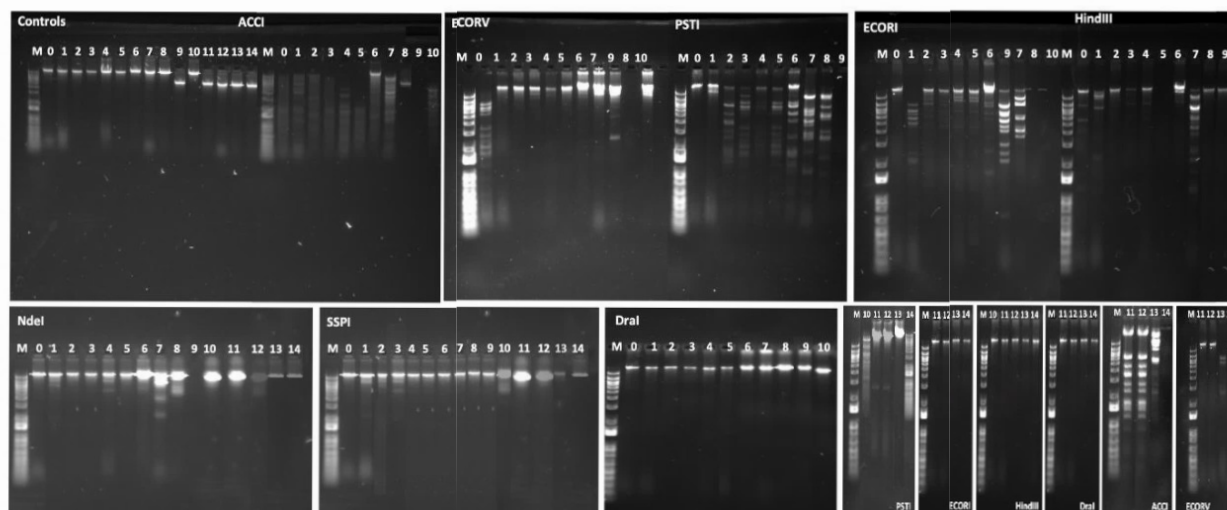


Figure S3. Restriction enzyme digest of phages isolated with *M. smegmatis* with 8 different restriction enzymes (AccI, EcoRI, DraI, PstI, HindIII, EcoRV, SspI, NdeI). 0 denotes known mycobacteriophage D29. 1 to 14 represents the mbps isolated from samples. Lane M designates 1 kbp (NEB) ladder as the “marker”.