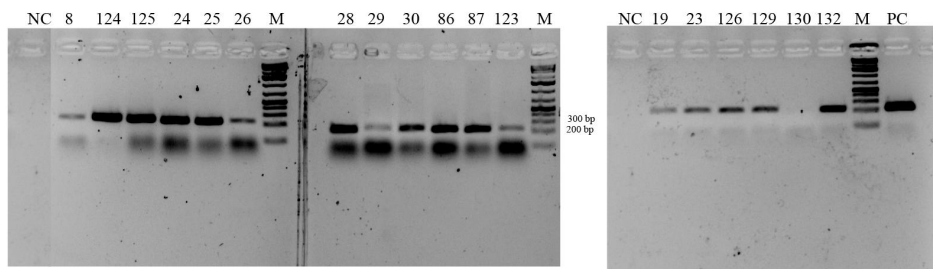
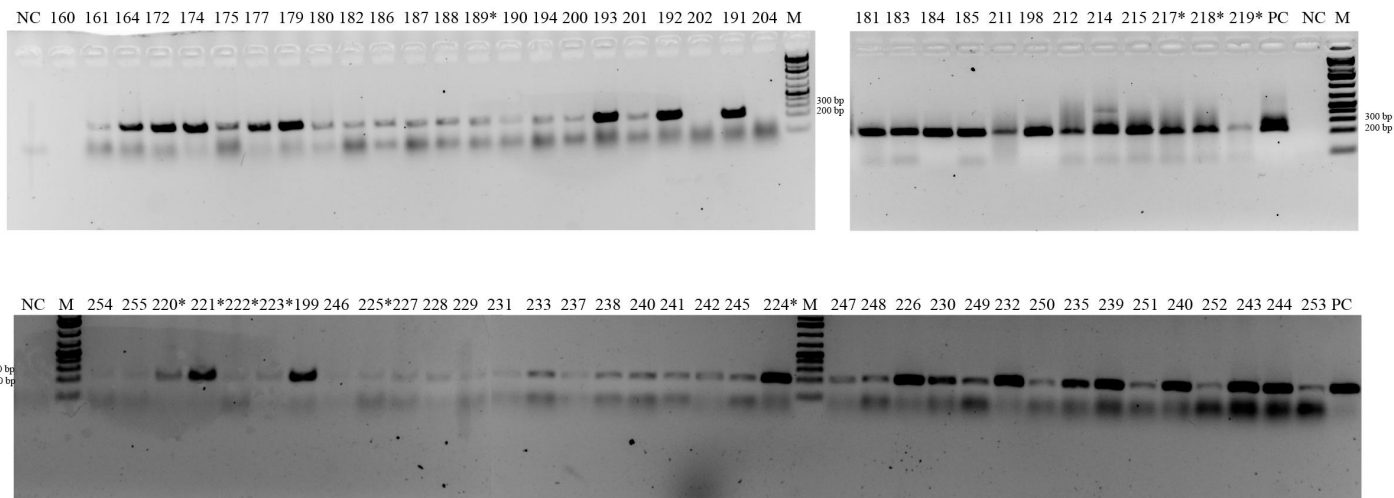


WSMV-CP-274 Primer set for WSMV — CP — 274 bp(this study)

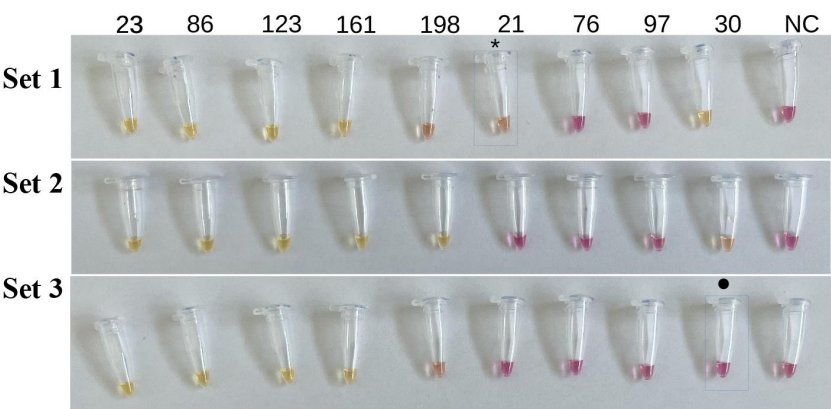


- 1.5% agarose gel
- M: 1 kb plus marker
- NC: Negative control
- PC: Positive control of WSMV



* positive samples for WSMV and BSMV

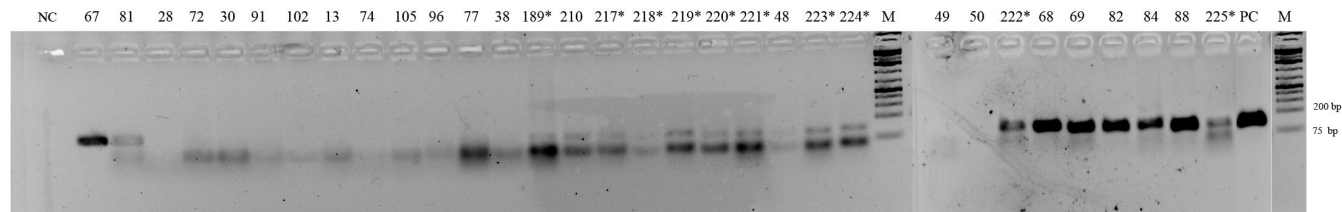
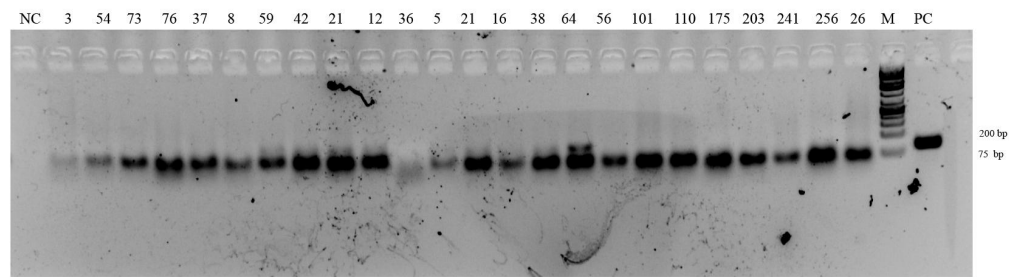
LAMP primer sets for WSMV — CP (this study)



- * - False positive
- - False negative
- NC — Negative control

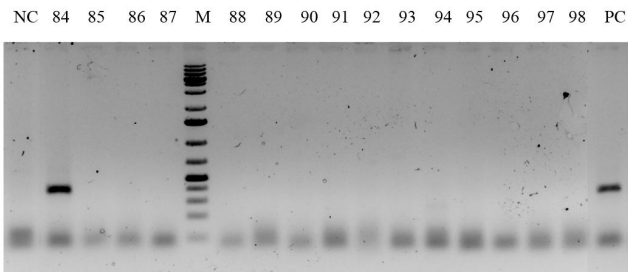
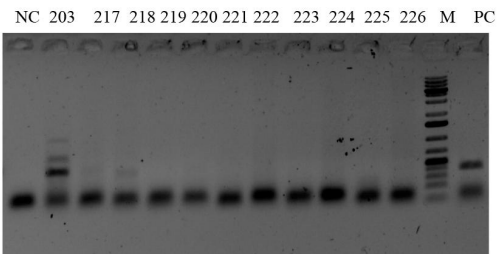
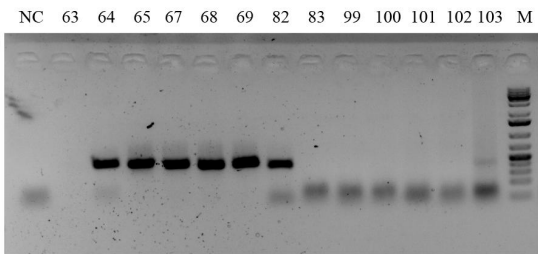
BSMV-γB-134 Primer set for BSMV — γB protein — 134 bp (this study)

- 1.5% agarose gel
- M: 1 kb plus marker
- NC: Negative control
- PC: Positive control of BSMV



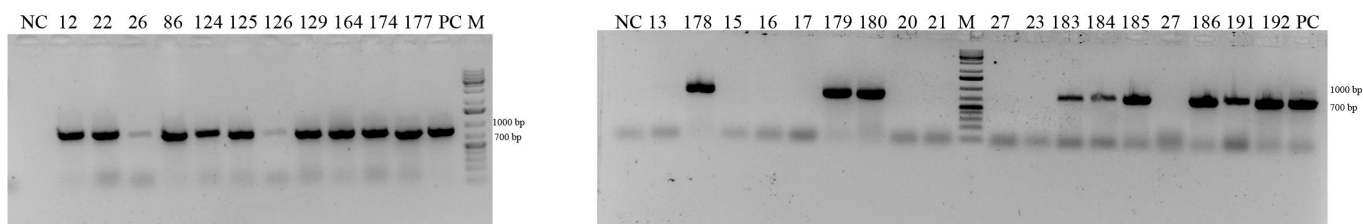
* positive samples for WSMV and BSMV

TGB2 Primer set for BSMV — γB protein— 397 bp (Zarzynska et al. 2014)

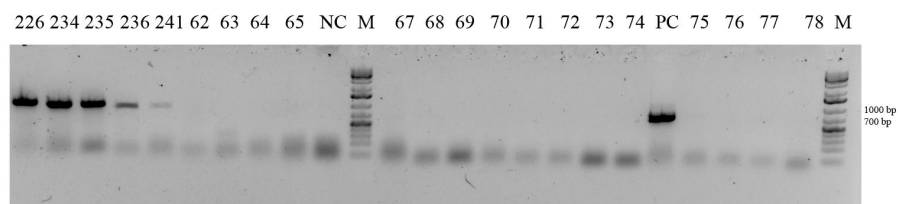
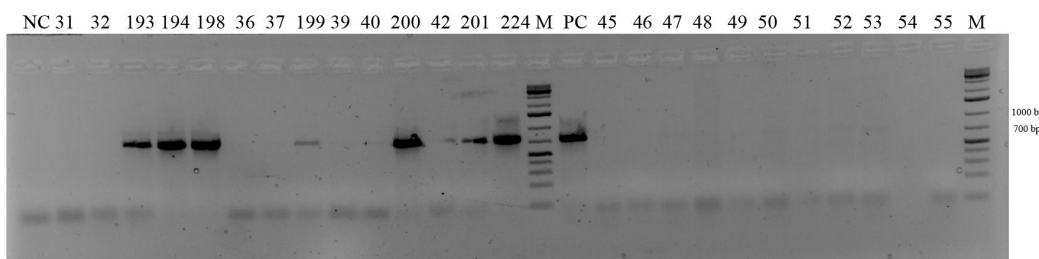


- 1.5% agarose gel
- M: 1 kb plus marker
- NC: Negative control
- PC: Positive control of WSMV

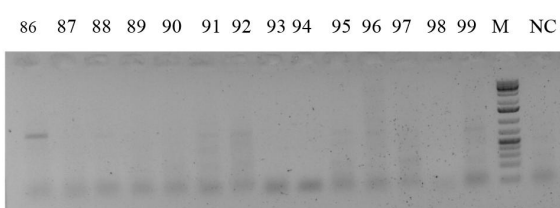
WS-8166-8909 Primer set for WSMV — CP — 750 bp (Kudela et al. 2008)



- 1.5% agarose gel
- M: 1 kb plus marker
- NC: Negative control
- PC: Positive control of WSMV



WSMV Primer set for WSMV — CP — 720 bp (Byamukama et al. 2016)



- 1.5% agarose gel
- M: 1 kb plus marker
- NC: Negative control
- PC: Positive control of WSMV

