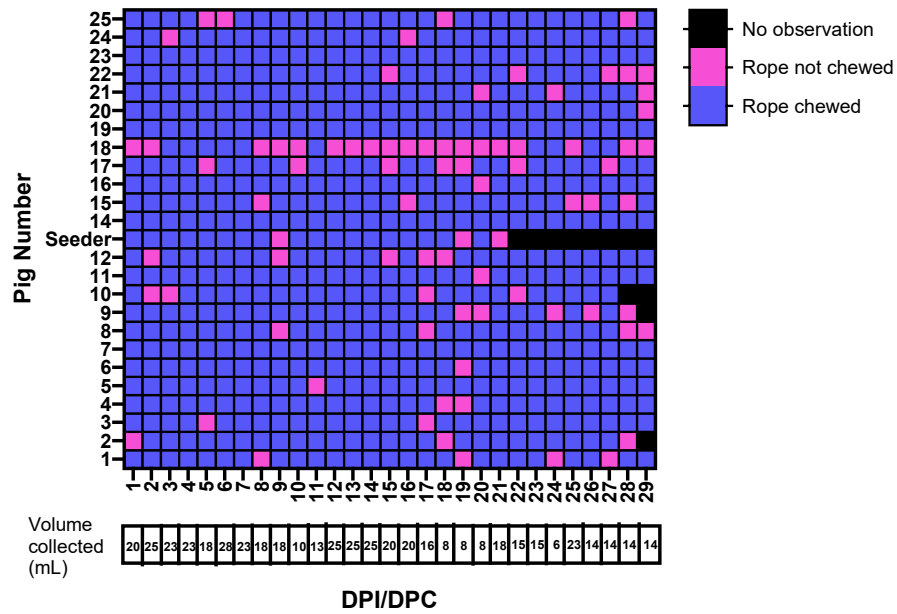
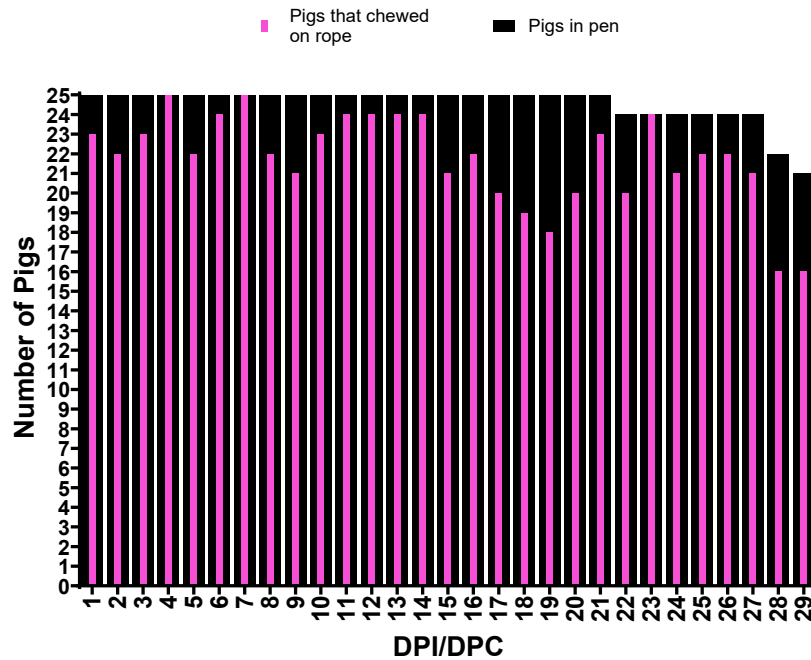


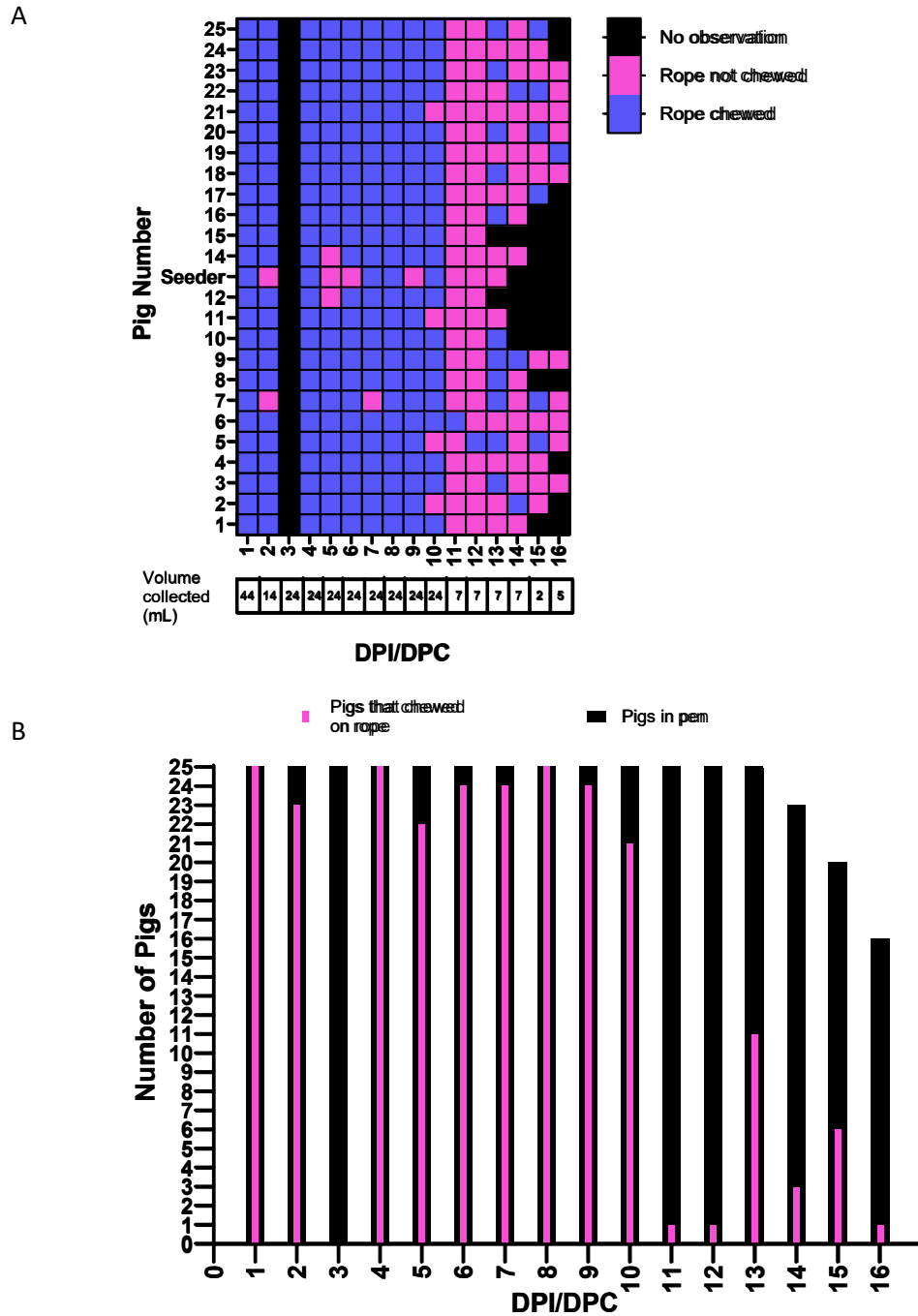
A



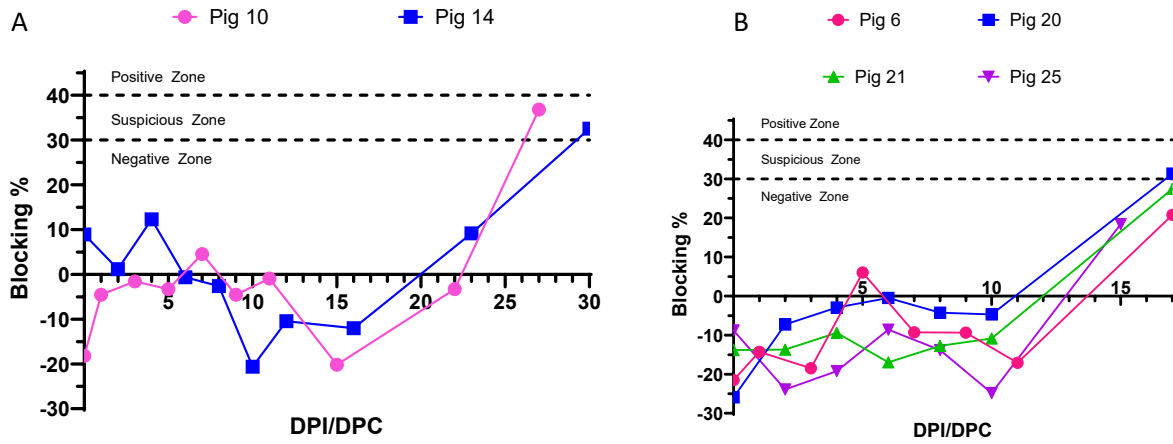
B



**Supplementary Figure 1.** Contribution of individual pigs to oral fluid collected in Experiment #1. **(A)** The heat map depicting pigs that chewed the ropes during 30 min collection time as observed through a CCTV camera. Also shown, the total volume of oral fluid collected each day. **(B)** The number of pigs that chewed on the rope compared to the total number of pigs in the pen on each day post-infection.



**Supplementary Figure 2.** Contribution of individual pigs to oral fluid collected in Experiment #2. **(A)** The heat map depicting pigs that chewed the ropes during 30 min collection time, as observed through a CCTV camera. On 3 dpi, no observations were conducted. Also shown, the total volume of oral fluid collected each day. **(B)** The number of pigs that chewed on the rope compared to the total number of pigs in the pen on each day post-infection.



**Supplementary Figure 3.** The antibody response in pigs infected with (A) CSFV Pinillos and (B) Koslov. The cut-off values for the ELISA are indicated by dotted lines (<30%, negative; 30-40%, suspicious; ≥40% positive).