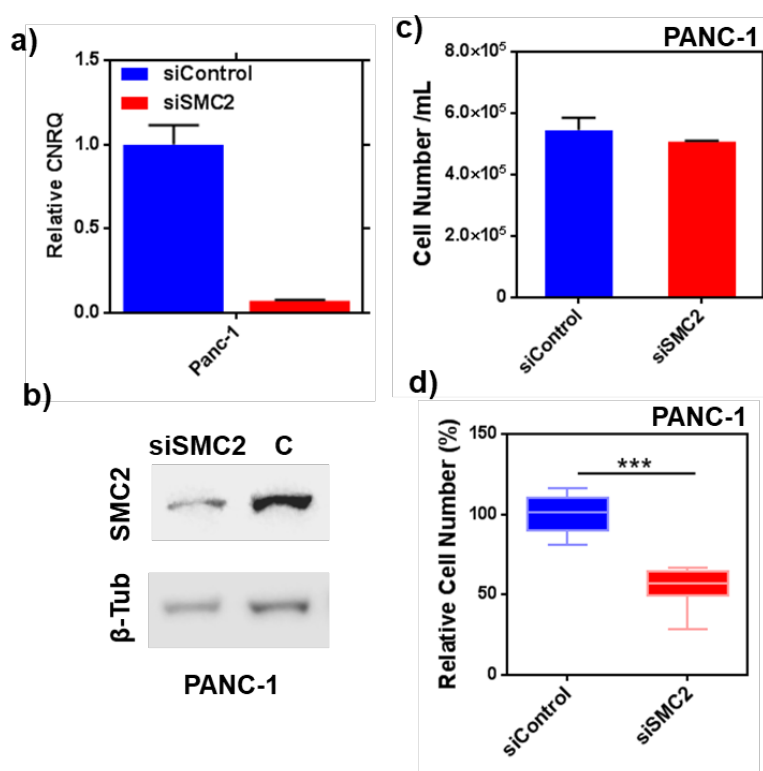
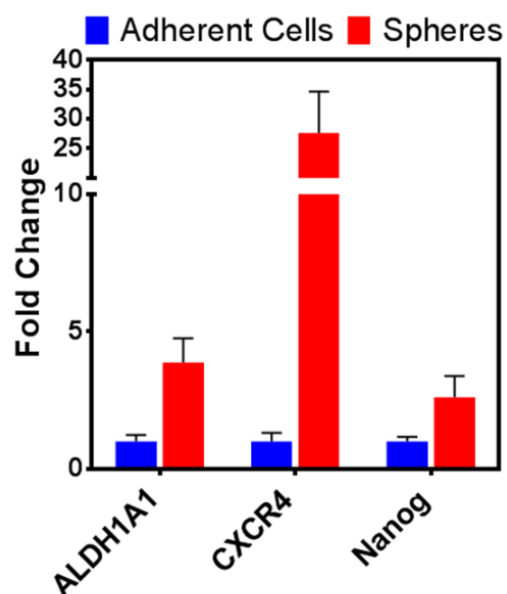


# Supplementary Materials: Intracellular Delivery of Anti-SMC2 antibodies Against Cancer Stem Cells

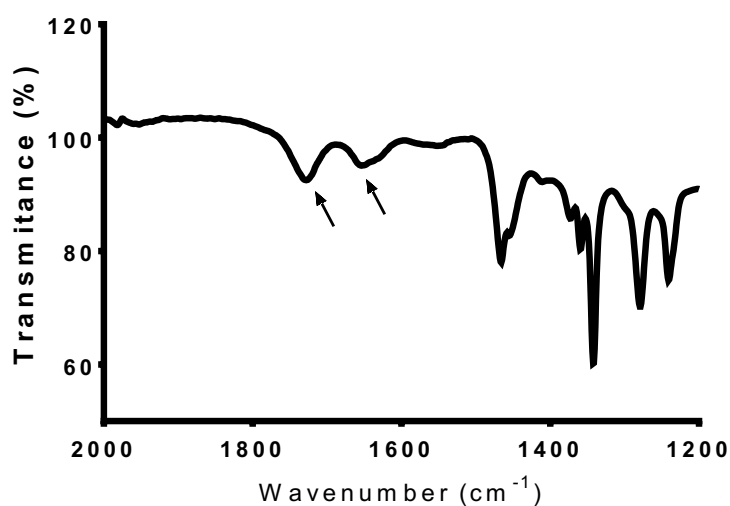
Sara Montero, Joaquin Seras-Franzoso, Fernanda Andrad, Francesc Martinez-Trucharte, Mireia Vilar-Hernández, Manuel Quesada, Helena Xandri, Diego Arango, Ibane Abasolo, Diana Rafael and Simó Schwartz Jr.



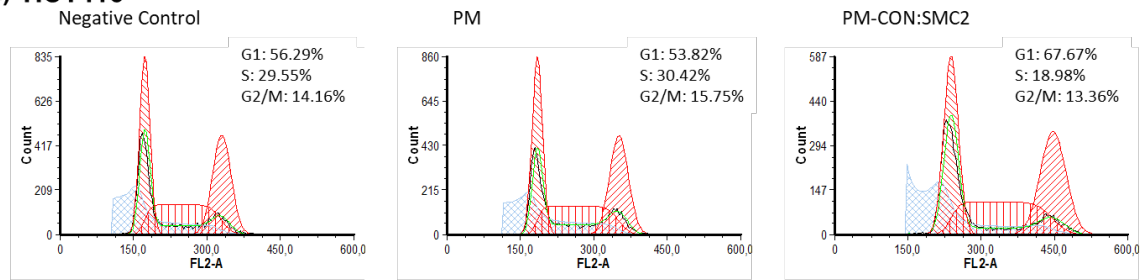
**Figure S1. SMC2 therapeutic target validation.** a) Relative mRNA levels after SMC2 silencing for PANC-1 pancreatic cancer cell line (siSMC2). Fold change was represented with respect to mRNA levels obtained from non-specific siRNA sequence treated cells (siControl); b) SMC2 and beta-tubulin proteins detected by western blot after SMC2 silencing compared to siControl treated cells (C); c) Cell viability assay for PANC-1 adherent cells after treatment with siSMC2 and siControl; d) Relative cell number percentage for PANC-1 cells growing in non-adherent conditions treated with siSMC2 and siControl.



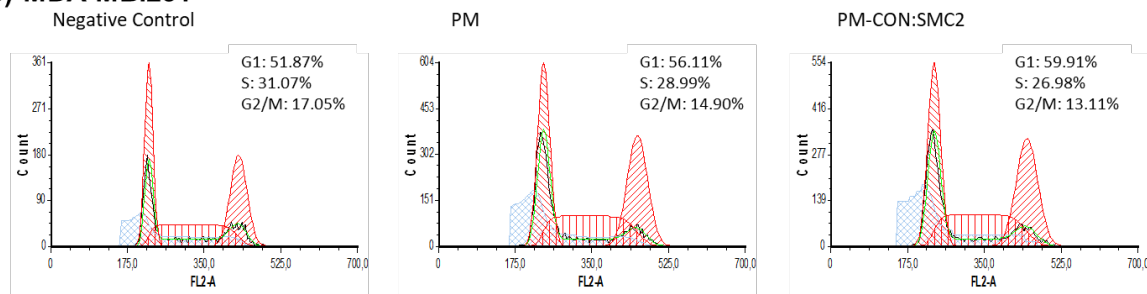
**Figure S2.** Stemness gene expression of HCT116 cell line growing in adherent cell culture or as tumorspheres (non-attachment). Fold change in gene expression for cells growing as tumorspheres (red bars) are represented with respect to mRNA levels obtained for adherent cells (blue bars). Stemness genes in colon cancer: ALDH1A1, CXCR4 and Nanog were analyzed using GAPDH and  $\beta$ -Actin as housekeeping references.



**Figure S3:** FTIR spectra for PM-CON:SMC2 at 100% -COOH. A peak displayed at 1728  $\text{cm}^{-1}$  correspond to the -C=O stretching of the -COOH groups and a peak at 1653  $\text{cm}^{-1}$  correspond to the C=O stretching vibrations of the peptide bond of the amide I.

**a) HCT116**

HCT116	% G1 $\pm$ SD	% S $\pm$ SD	% G2/M $\pm$ SD	G2 / G1
Control	56.291 $\pm$ 2.382	29.546 $\pm$ 1.205	14.163 $\pm$ 1.223	1.900 $\pm$ 0.010
PM	53.824 $\pm$ 8.322	30.422 $\pm$ 7.600	15.754 $\pm$ 3.031	1.890 $\pm$ 0.031
PM-CON:SMC2	67.667 $\pm$ 1.562	18.975 $\pm$ 1.212	13.358 $\pm$ 0.364	1.876 $\pm$ 0.005

**b) MDA-MB.231**

MDA-MB.231	% G1 $\pm$ SD	% S $\pm$ SD	% G2/M $\pm$ SD	G2 / G1
Control	51.866 $\pm$ 7.764	31.086 $\pm$ 5.203	17.047 $\pm$ 3.049	1.910 $\pm$ 0.009
PM	56.111 $\pm$ 7.065	28.995 $\pm$ 6.389	14.895 $\pm$ 0.984	1.902 $\pm$ 0.005
PM-CON:SMC2	59.913 $\pm$ 6.950	26.977 $\pm$ 6.519	13.110 $\pm$ 0.459	1.900 $\pm$ 0.011

**Figure S4: Representative cell cycle analysis of HCT116 colon cell line (a) and MDA-MB-231 breast cell line (b).** Plots of cell cycle fitting curves distribution. Below, quantification of the percentage of cells at distinct cell cycle phases: G1, S and G2/M. G2/G1 ratio was also determined.