

Pickering emulsions enhance oral bioavailability of curcumin nanocrystals: The effect of oil types

Supplementary Materials

Yuze Sheng ^{1,†}, Qin Yu ^{1,2,†}, Yanping Huang ², Quangang Zhu ², Zhongjian Chen ²,
Wei Wu ^{1,2,3}, Tao Yi ⁴ and Yi Lu ^{1,2,3,*}

¹ Key Laboratory of Smart Drug Delivery of MOE, School of Pharmacy, Fudan University, Shanghai 201203, China

² Shanghai Skin Disease Hospital, Tongji University School of Medicine, Shanghai 200433, China

³ Fudan Zhangjiang Institute, Shanghai 201203, China

⁴ Faculty of Health Sciences and Sports, Macao Polytechnic University, Macau, China

* Correspondence: fd_luyi@fudan.edu.cn

† The authors contributed equally to this work.

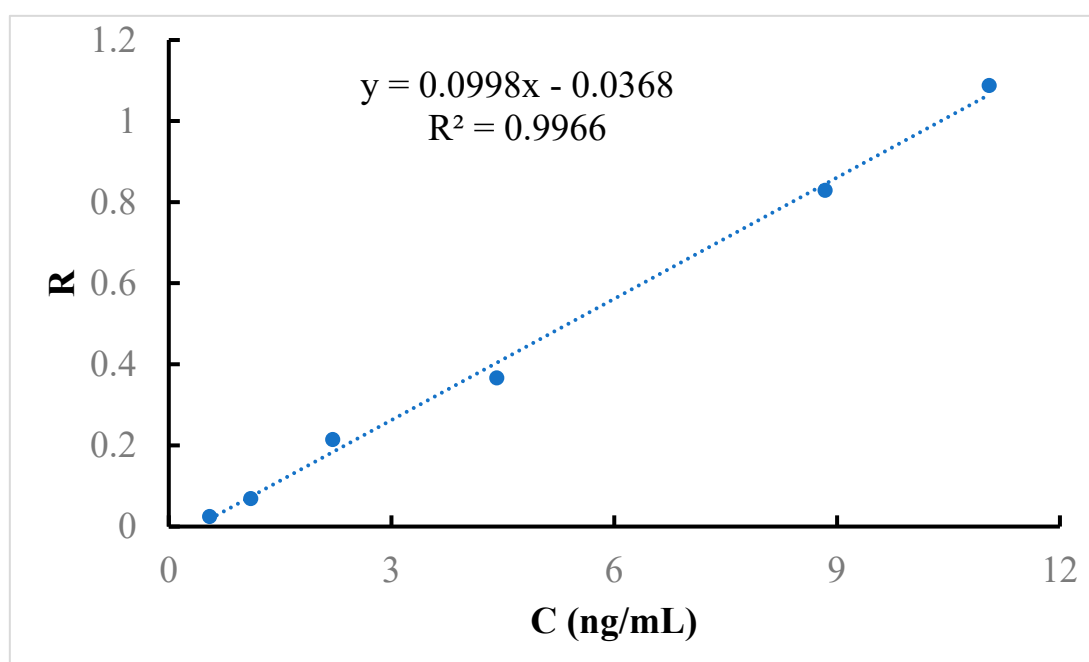


Figure S1. The standard curve for detection of CUR in plasma.

Table S1. The intra-day and inter-day precision for detection of CUR in plasma.

Concentration (ng/mL)	Intra-day RSD (%)	Inter-day RSD (%)
1.105	9.089	9.471
4.420	4.190	5.533
8.840	7.569	8.414

Table S2. The accuracy for detection of CUR in plasma.

Concentration (ng/mL)	Detected concentration (ng/mL)	Accuracy (%)
1.105	1.757 ± 0.099	97.346 ± 8.848
4.420	4.005 ± 0.168	90.611 ± 3.797
8.840	7.981 ± 0.603	90.288 ± 6.826