

# Supplementary

**Table S1.** Descriptive Statistics for the Study Sample.

		Frequency	Percent
Group	Respondent	39	49.3
	Resistant	40	50.7
Gender	Female	55	69.4
	Male	24	30.6
Education	No	35	56.6
	Yes	44	43.4
Smoking	No	71	91.7
	Yes	8	8.3
Inflammatory disease	No	19	12.9
	Yes	60	87.1
Chronic Disease	No	19	12.9
	Yes	60	87.1
Currently Taking AD	No	7	8.1
	Yes	72	91.9
Improvement with medications	No	39	56.5
	Yes	40	43.5
Hospitalization	No	73	83.9
	Yes	6	16.1
Family History	No	67	87.1
	Yes	12	12.9
Suicide	No	74	87.1
	Yes	5	12.9
Repeated visits	No	65	40.3
	Yes	14	59.7
Change of AD in cthe urrent year	No	47	62.9
	Yes	32	37.1
Adherence	No	22	11.3
	Yes	57	88.7

AD: antidepressant.

**Table S2.** Comparison of the Treatment Respondent Group vs. Treatment Resistant Group in the Demographic and Clinical Data.

		Group		P-value
		Respondent	Resistant	
Gender	Female	24 54.5%	31 77.5%	0.061
	Male	15 45.5%	9 22.5%	
Education	No	11 40.0%	24 63.2%	0.125
	Yes	28 60.0%	14 36.8%	
Smoking	No	36 90.9%	35 92.1%	>0.999
	Yes	3 9.1%	3 7.9%	
Inflammatory disease	No	15 18.2%	4 10.0%	0.438
	Yes	24 81.8%	36 90.0%	
Chronic Disease	No	14 13.6%	5 12.5%	>0.999
	Yes	25 86.4%	35 87.5%	
Taking AD	No	6 18.2%	1 2.5%	0.049
	Yes	33 81.8%	39 97.5%	
Improvement with medications	No	0 0.0%	35 87.5%	<0.001
	Yes	39 100.0%	5 12.5%	
Hospitalization	No	38 95.5%	31 77.5%	0.082
	Yes	1 4.5%	9 22.5%	
Family History	No	36 86.4%	35 87.5%	>0.999
	Yes	3 13.6%	5 12.5%	
Suicide	No	39 100.0%	32 80.0%	0.042

	Yes	0 0.0%	8 20.0%	
	No	33 72.7%	9 22.5%	
Repeated visits				<0.001
	Yes	6 27.3%	31 77.5%	
	No	38 95.5%	18 45.0%	
Change of AD in current year				<0.001
	Yes	1 4.5%	22 55.0%	
	No	35 18.2%	3 7.5%	
Adherence				0.002
	Yes	4 81.8%	37 92.5%	
Age Mean (SD)		51.5(17.3)	49.8(15.3)	0.481
BMI Mean (SD)		33.7(9.2)	31.3(7.6)	0.205

AD: antidepressants; BMI: body mass index; SD: standard deviation.

The variables that differentiated the treatment-resistant patients from the treatment responders were statistically significant between both groups. AD use ( $P<0.049$ ), improvement with medications ( $P<0.001$ ), suicide ( $P<0.042$ ), repeated visits ( $P<0.001$ ), changes in AD in the current year ( $P<0.001$ ), and adherence ( $P<0.002$ ).

**Table S3.** Comparison of the Laboratory Test Results between the Healthy Group vs. Depressed Group.

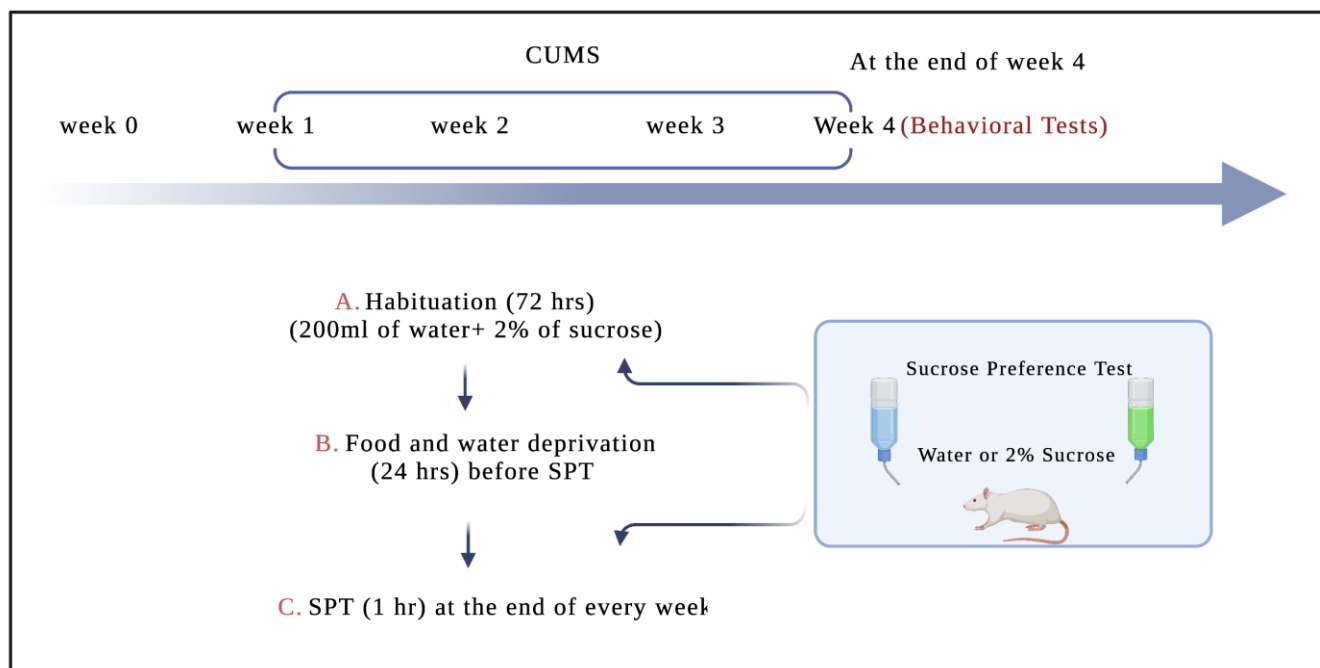
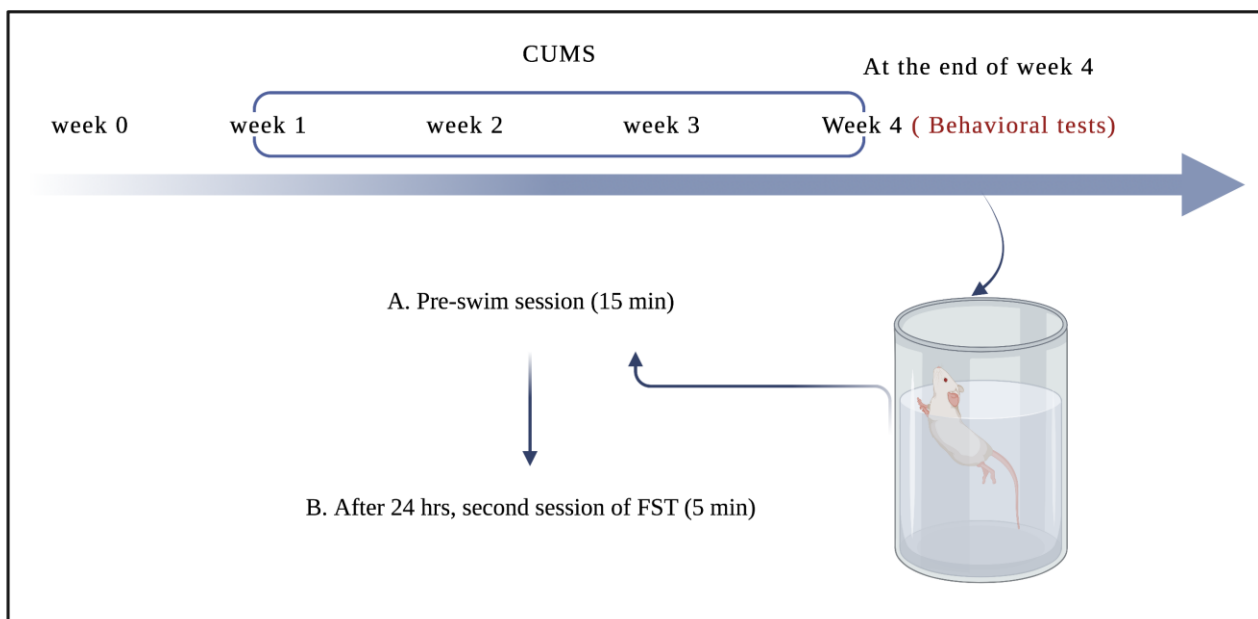
Group	Healthy			Depression			P-value
	N	Mean	SD	N	Mean	SD	
CRP	80	6.5	11.5	67	57.1	82.7	<0.001
ESR	75	30.6	22.7	64	44.7	31.3	0.004
WBC	102	7.5	2.4	99	8.9	4.8	0.007

CRP, C-reactive protein; ESR, erythrocyte sedimentation rate; WBC, white blood cell count. The levels of inflammatory biomarkers (CRP, ESR, and WBC) were significantly different between the groups: CRP ( $P<0.001$ ), ESR ( $P=0.004$ ), and WBC ( $P=0.007$ ).

**Table S4.** Comparison of the Laboratory Test Results between the Respondent Group vs. Resistant Group.

Group	Respondent						Resistant						P-value
	N	Mean	SD	Q1	Median	Q3	N	Mean	SD	Q1	Median	Q3	
CRP	23	11.08	7.7	4.2	1.8	15.6	28	61.0	97.0	5.2	15.4	83.6	0.031
ESR	21	27.2	12.4	8.0	5.0	53.0	22	50.7	31.4	30.0	43.0	64.3	0.048
WBC	28	8.7	4.6	4.8	5.3	7.9	38	7.9	3.2	5.2	7.2	11.1	0.174

CRP, C-reactive protein; ESR, erythrocyte sedimentation rate; WBC, white blood cell count. The inflammatory biomarkers (CRP and ESR) showed a statistically significant difference between the groups: CRP ( $P=0.031$ ) and ESR ( $P=0.048$ ).



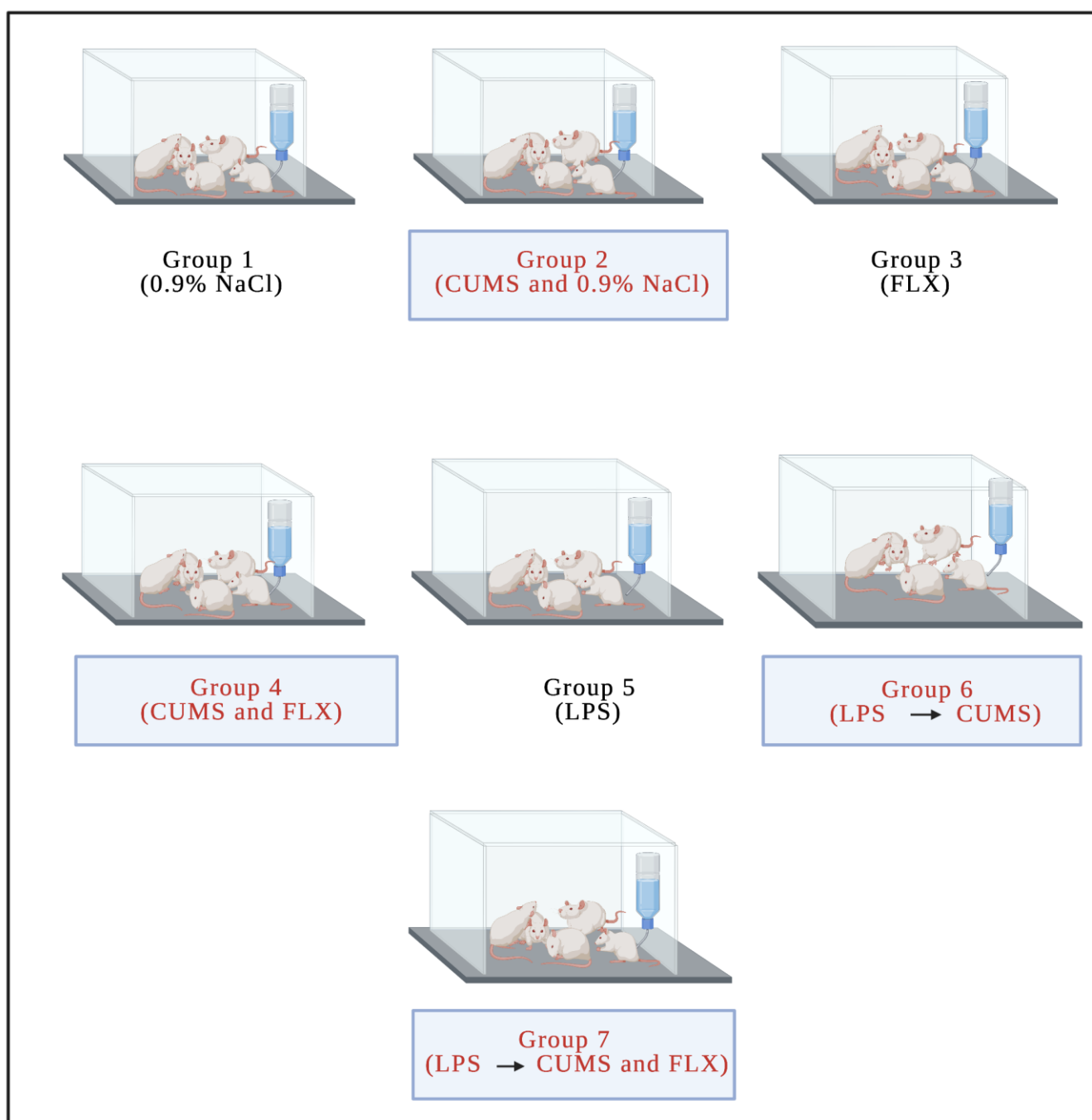


Figure S1.