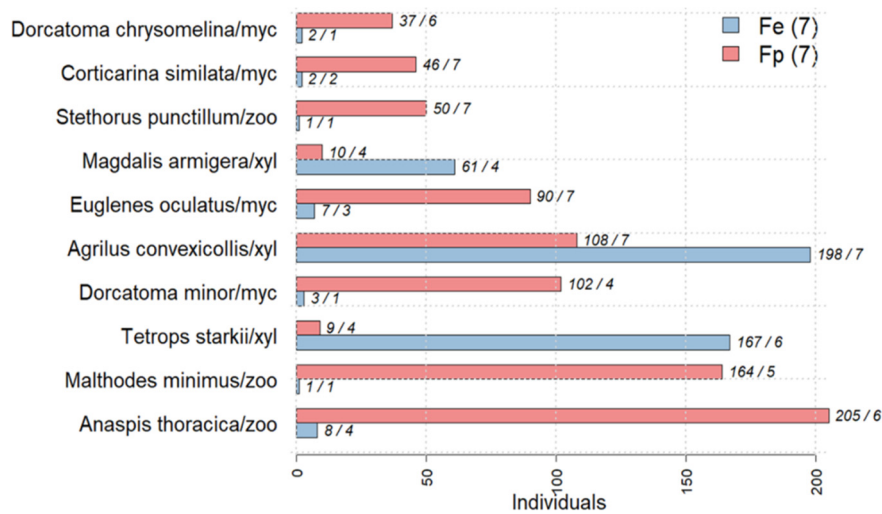


Supplementary Materials



Supplement Figure S1: Distribution of the ten most frequent species of beetles on *F. excelsior* (Fe) and *F. pennsylvanica* (Fp) collected by fogging in a floodplain forests of the Biosphere Reserve Mittelbe in Germany 2020. Number of foggings in brackets. For each beetle species the feeding guild is shown. At top of each bar the absolute number and of individuals and the constancy of each species is also indicated. Remarkably, *A. convexicollis* and *T. starkii* are listed on the Red List of Saxonia-Anhalt in the category 2 and *D. minor* is a newly discovered species for Saxonia-Anhalt.