

Supplementary Material

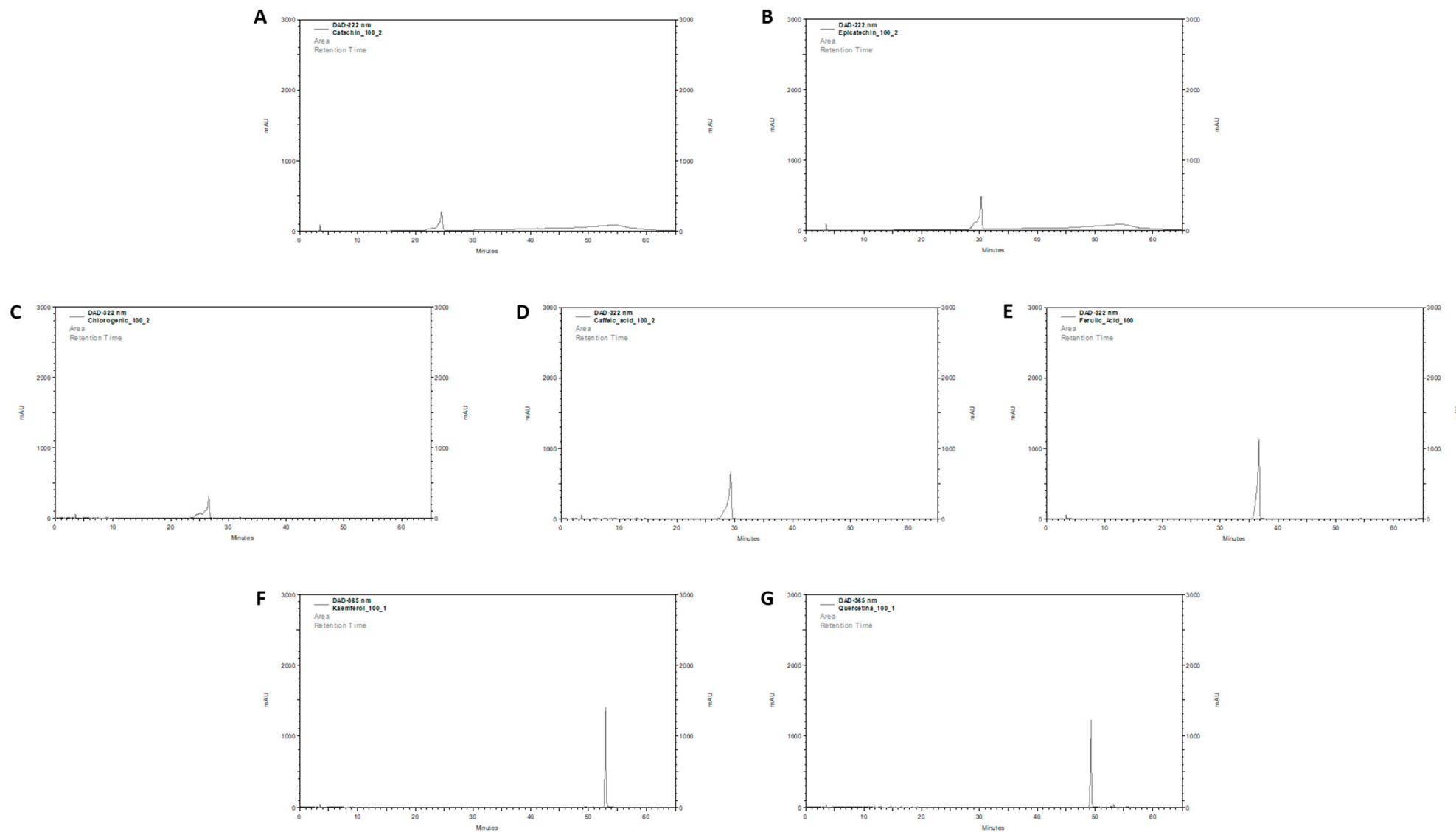


Figure S1. Chromatograms of the standards obtained by HPLC-DAD analysis. The chromatograms of catechin (A) and epicatechin (B) were obtained at 222 nm, chlorogenic acid (C), caffeic acid (D) and ferulic acid (E) at 322 nm, and kaempferol (F) and quercetin (G) at 365 nm. All standards were at a concentration of 100 mg/L.

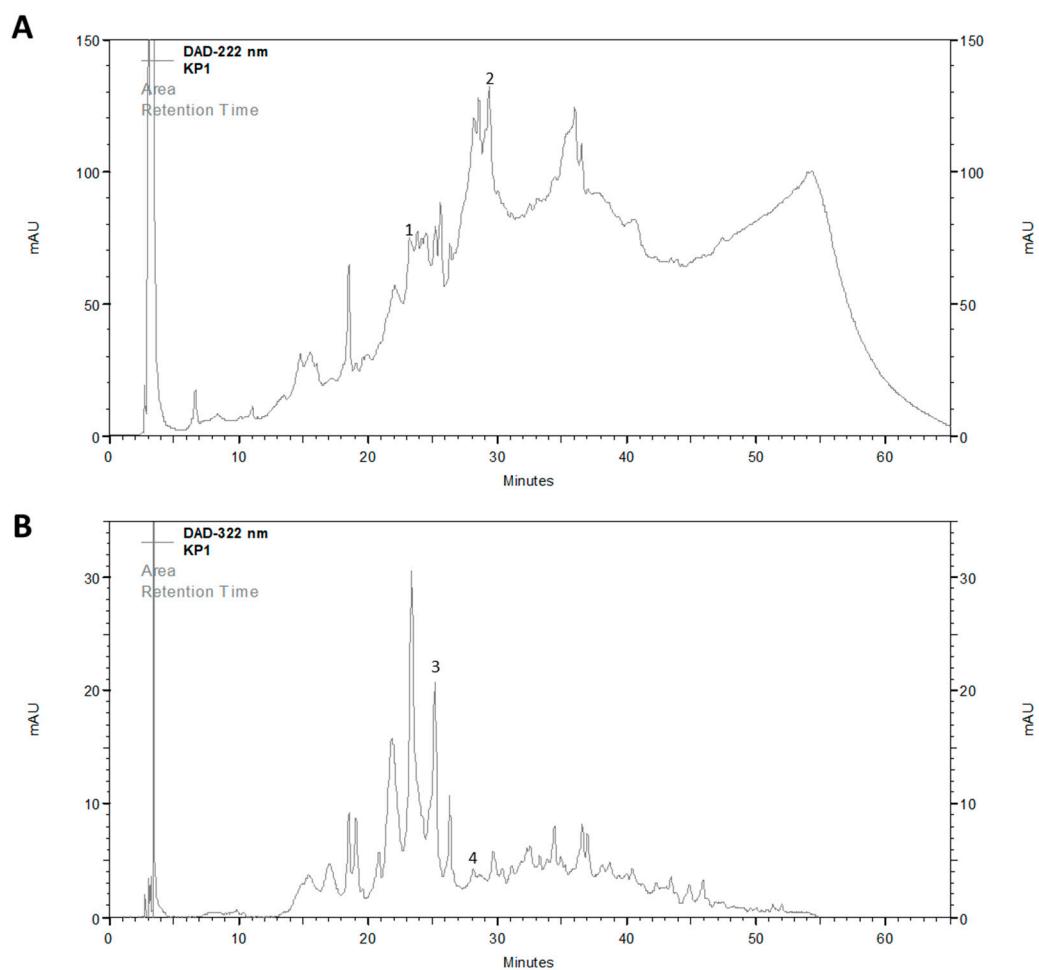


Figure S2. Chromatograms of the extract obtained by HPLC-DAD analysis. The chromatograms were obtained at 222 nm (A) and 322 nm (B). Peak 1 – catechin; peak 2 – epicatechin; peak 3 – chlorogenic acid; and peak 4 – caffeic acid. The extract was at a concentration of 20 mg/mL.