

List of Figures

Figure S1. Data collection and analysis flowchart.

Figure S2. Annual number of published documents and cumulative number of citations.

Figure S3. Annual scientific productivity of different countries.

Figure S4. (a) Network map of keyword co-occurrence; (b) Collaboration network among different countries.

Figure S5. Contingency matrix of (a) keywords and year of publication and (b) keywords and country.

Figure S6. SA/CA ratio of stormwater treatment wetlands in different land uses.

Figure S7. Usage rate of filter media and substrates used in stormwater treatment wetlands.

Figure S8. Distribution of the most commonly used plants in stormwater treatment wetlands.

Figure S9. Typical water quality parameters investigated in stormwater treatment wetlands research.

Figure S10. Synopsis of pollutant concentrations in the runoff and stormwater treatment wetlands effluent.

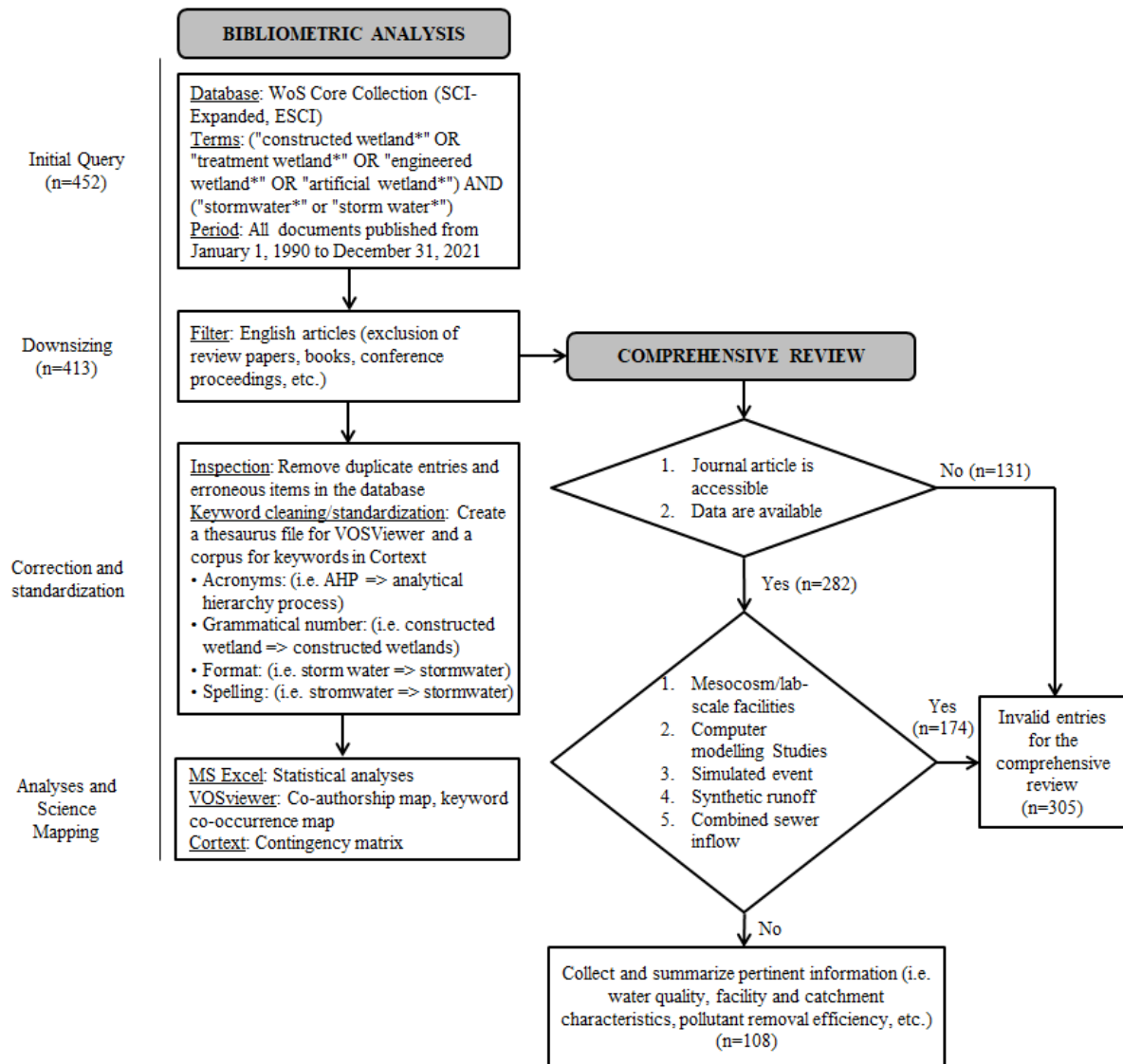


Figure S1. Data collection and analysis flowchart.

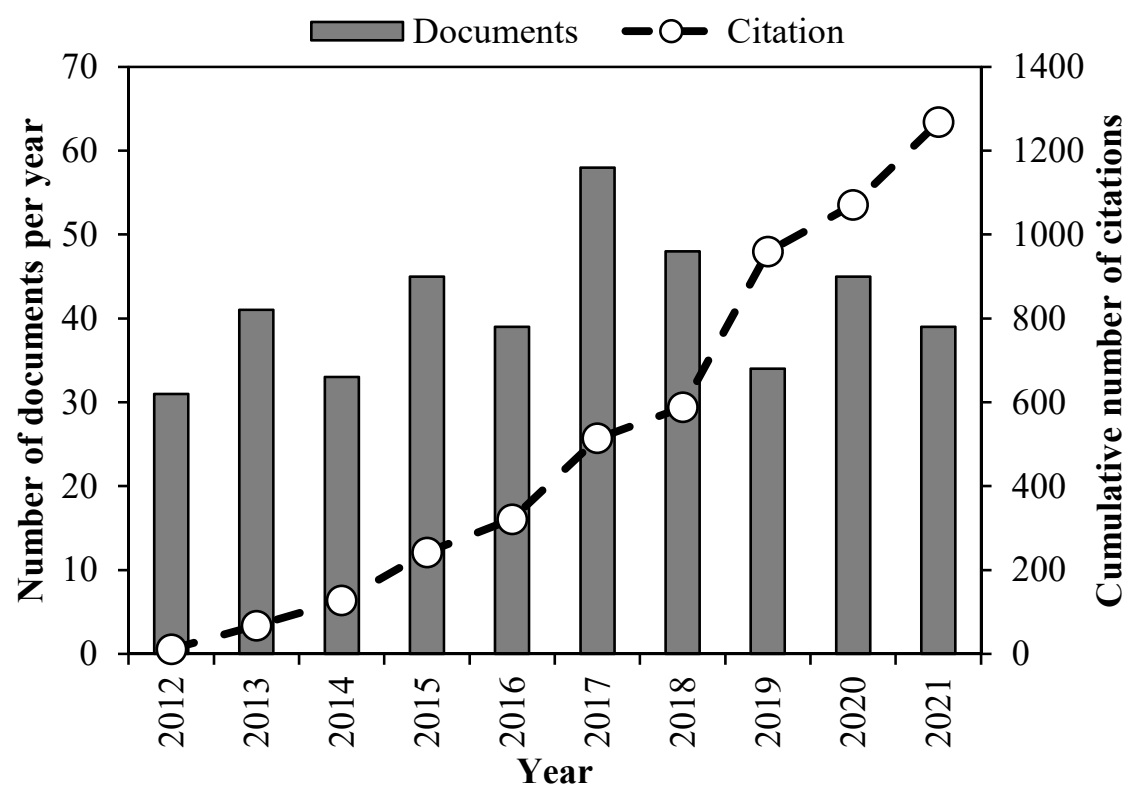


Figure S2. Annual number of published documents and cumulative number of citations.

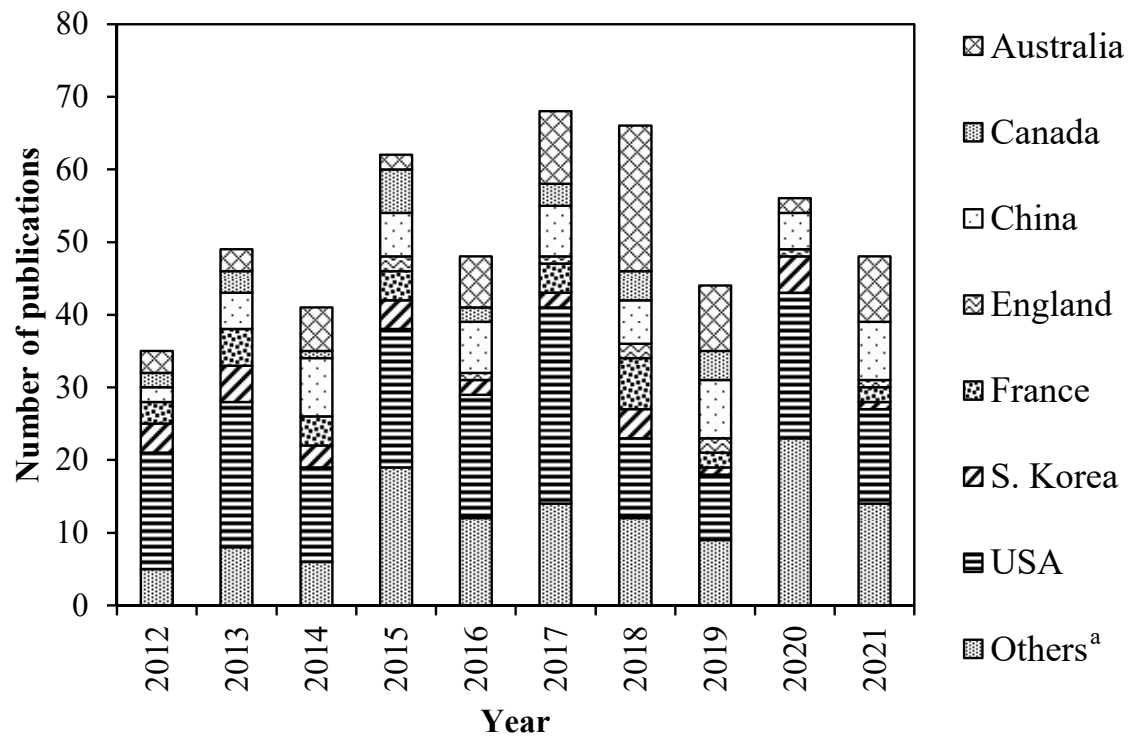


Figure S3. Annual scientific productivity of different countries.

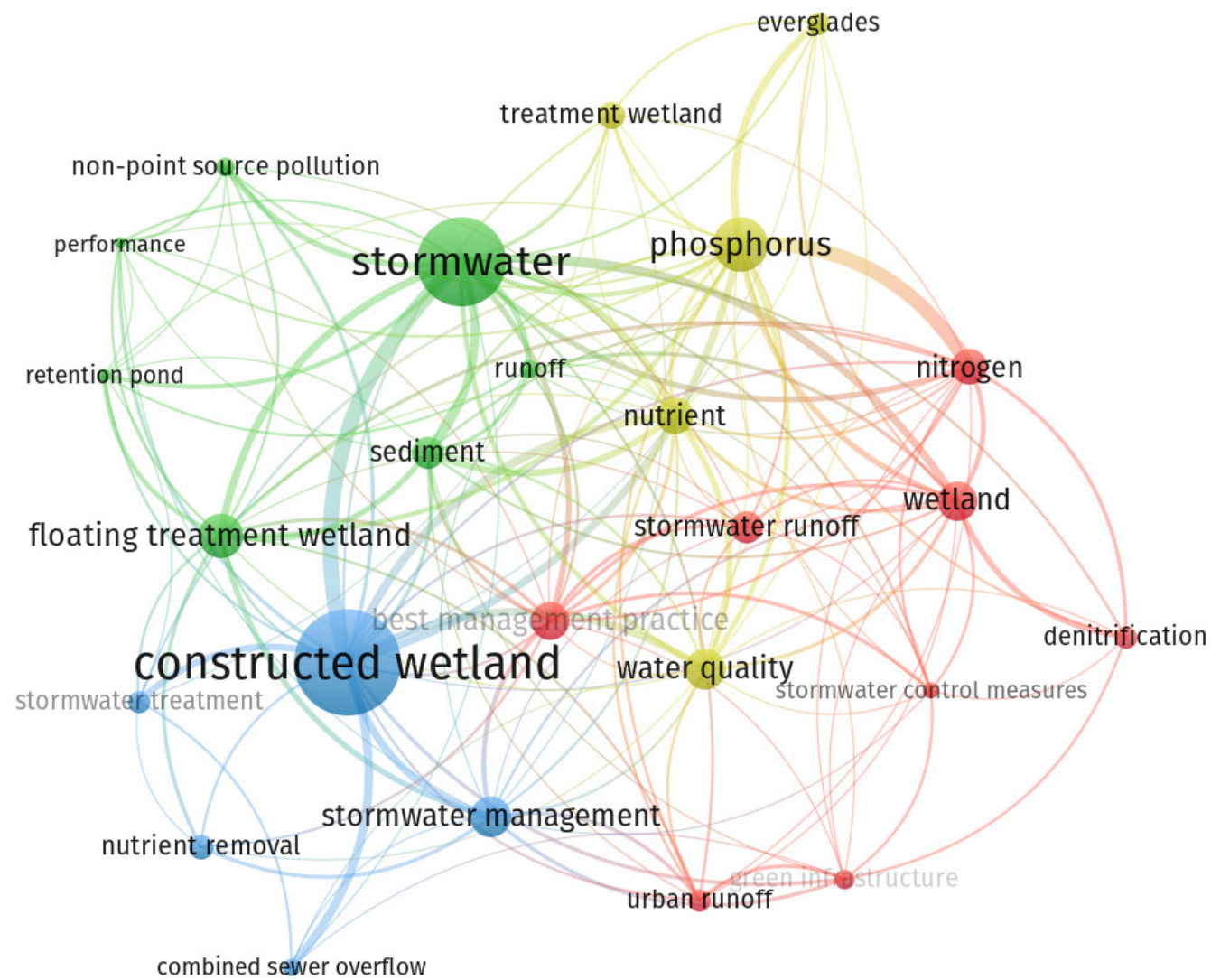


Figure S4a. Network map of keyword co-occurrence.

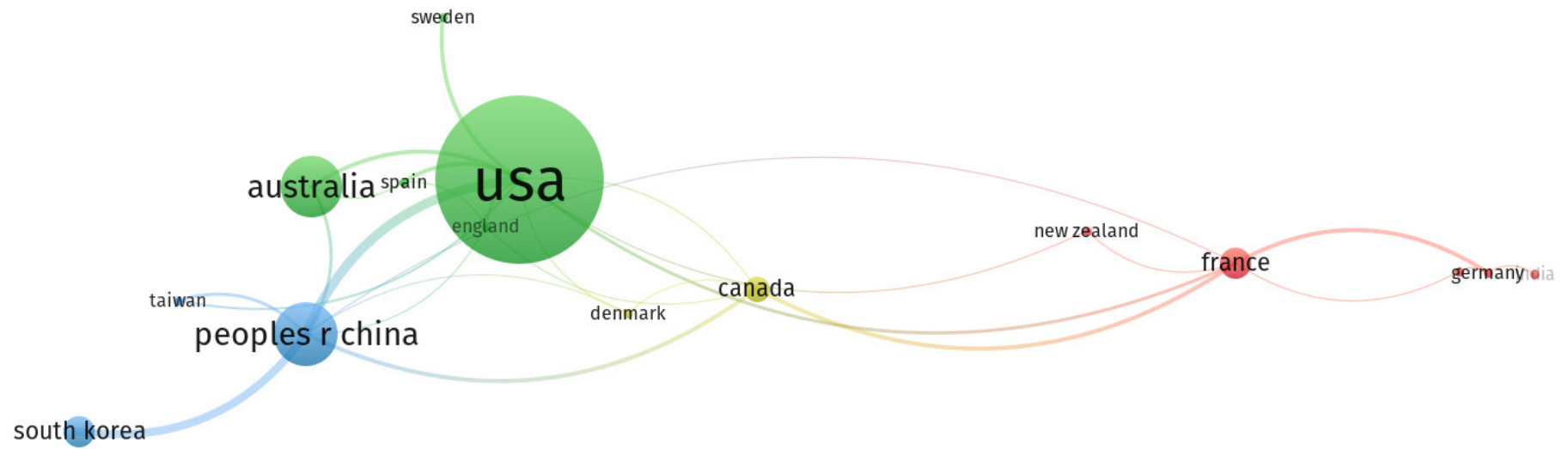


Figure S4b. Collaboration network among different countries.

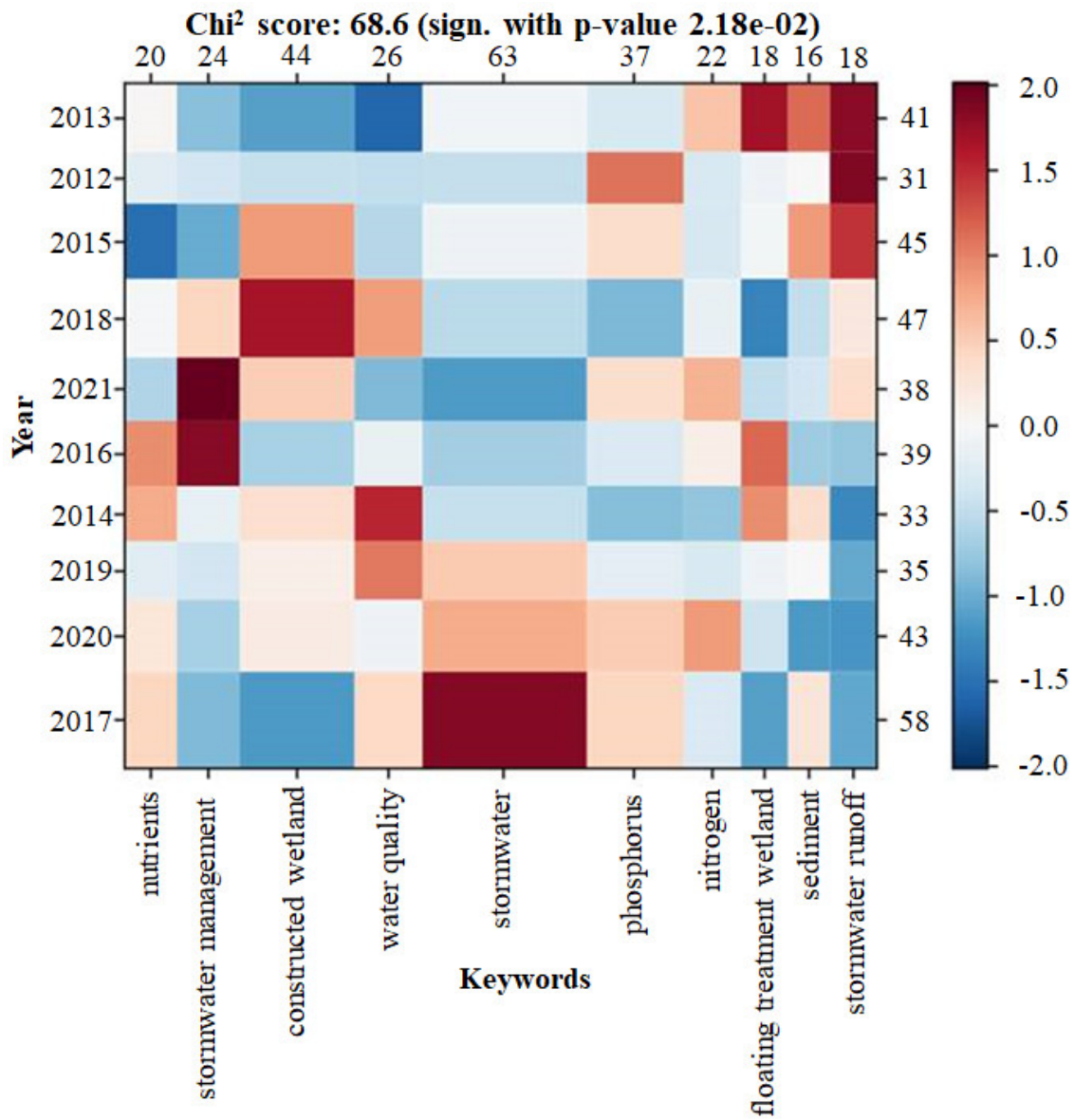


Figure S5a. Contingency matrix of keywords and year of publication.

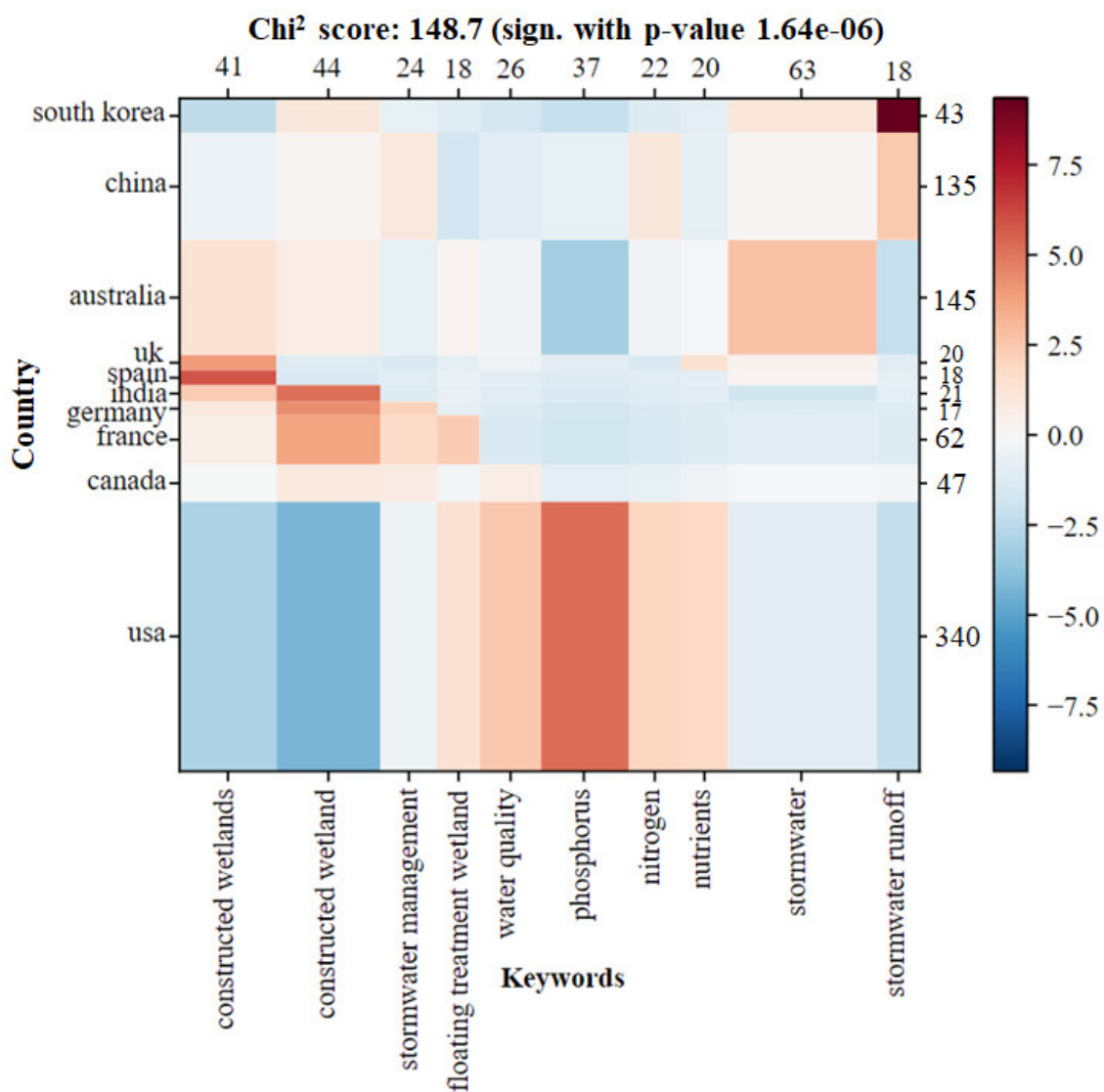


Figure S5b. Contingency matrix of keywords and country.

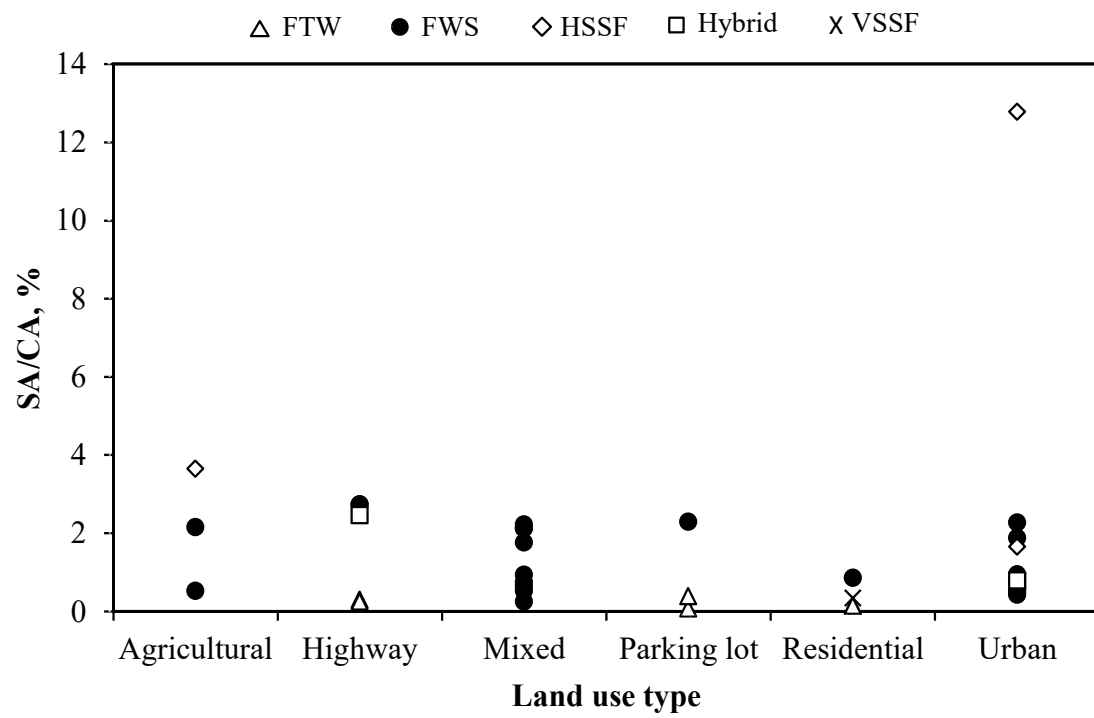


Figure S6. SA/CA ratio of stormwater treatment wetlands in different land uses.

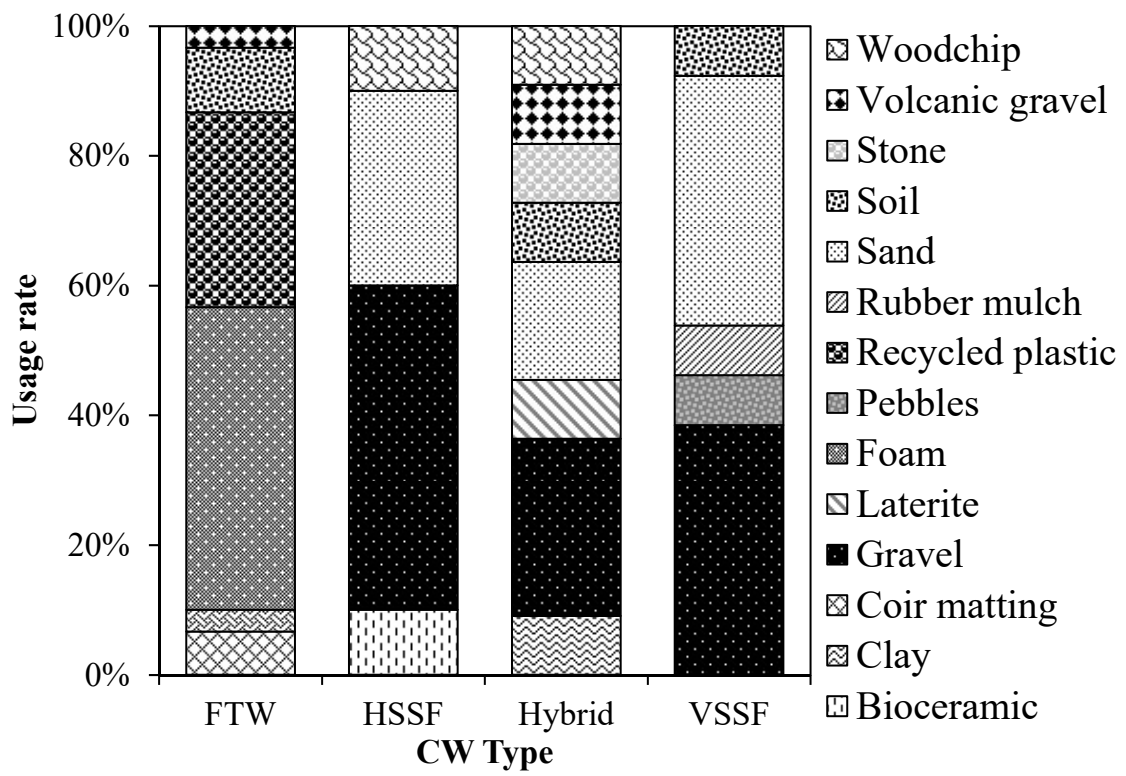


Figure S7. Usage rate of filter media and substrates used in stormwater treatment wetlands.

Typha
 Juncus
 Carex
 Phragmites
 Schoenoplectus
 Others

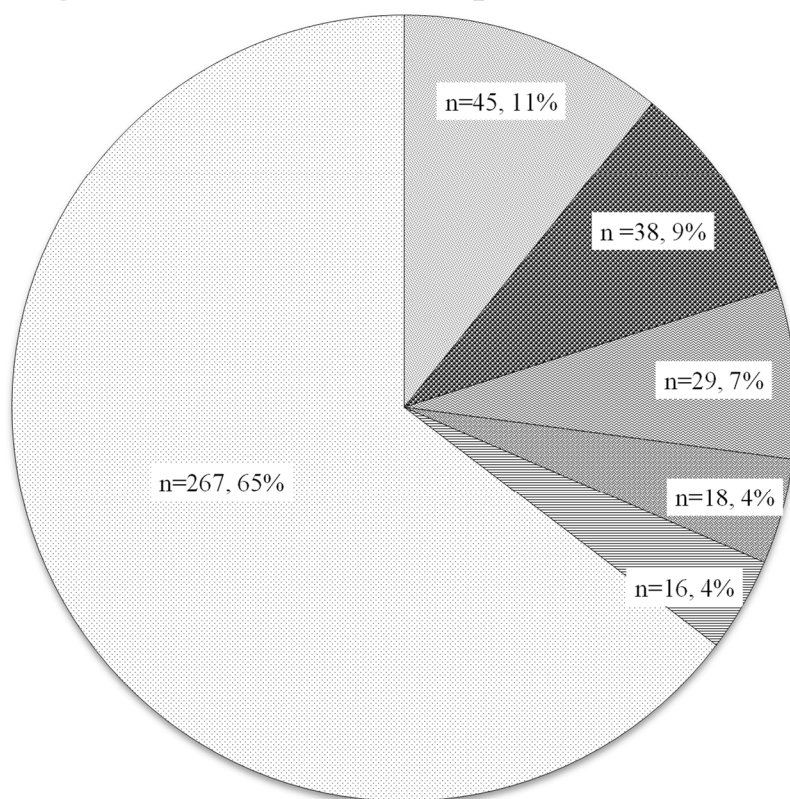


Figure S8. Distribution of the most commonly used plants in stormwater treatment wetlands.

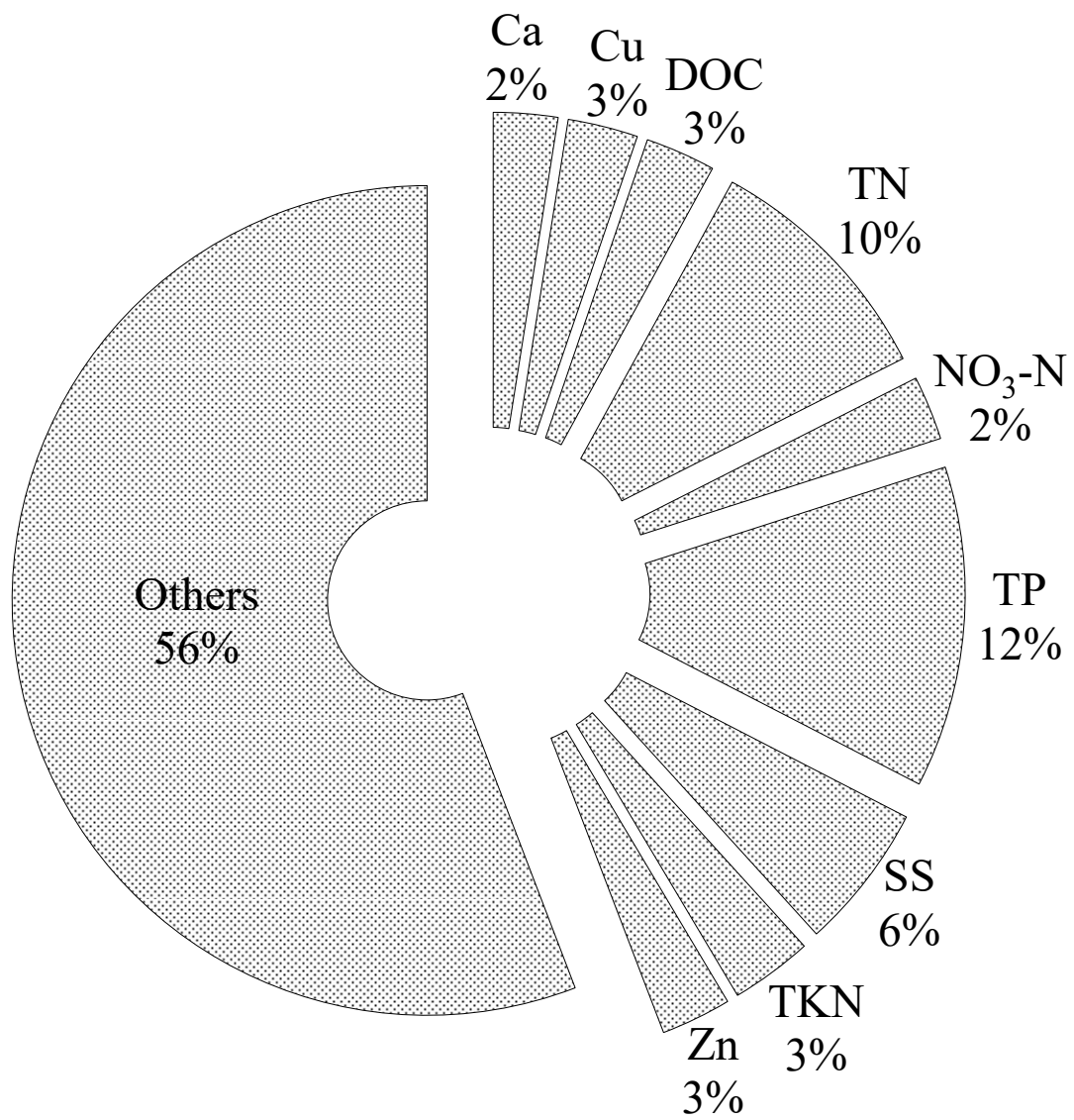


Figure S9. Typical water quality parameters investigated in stormwater treatment wetlands research.

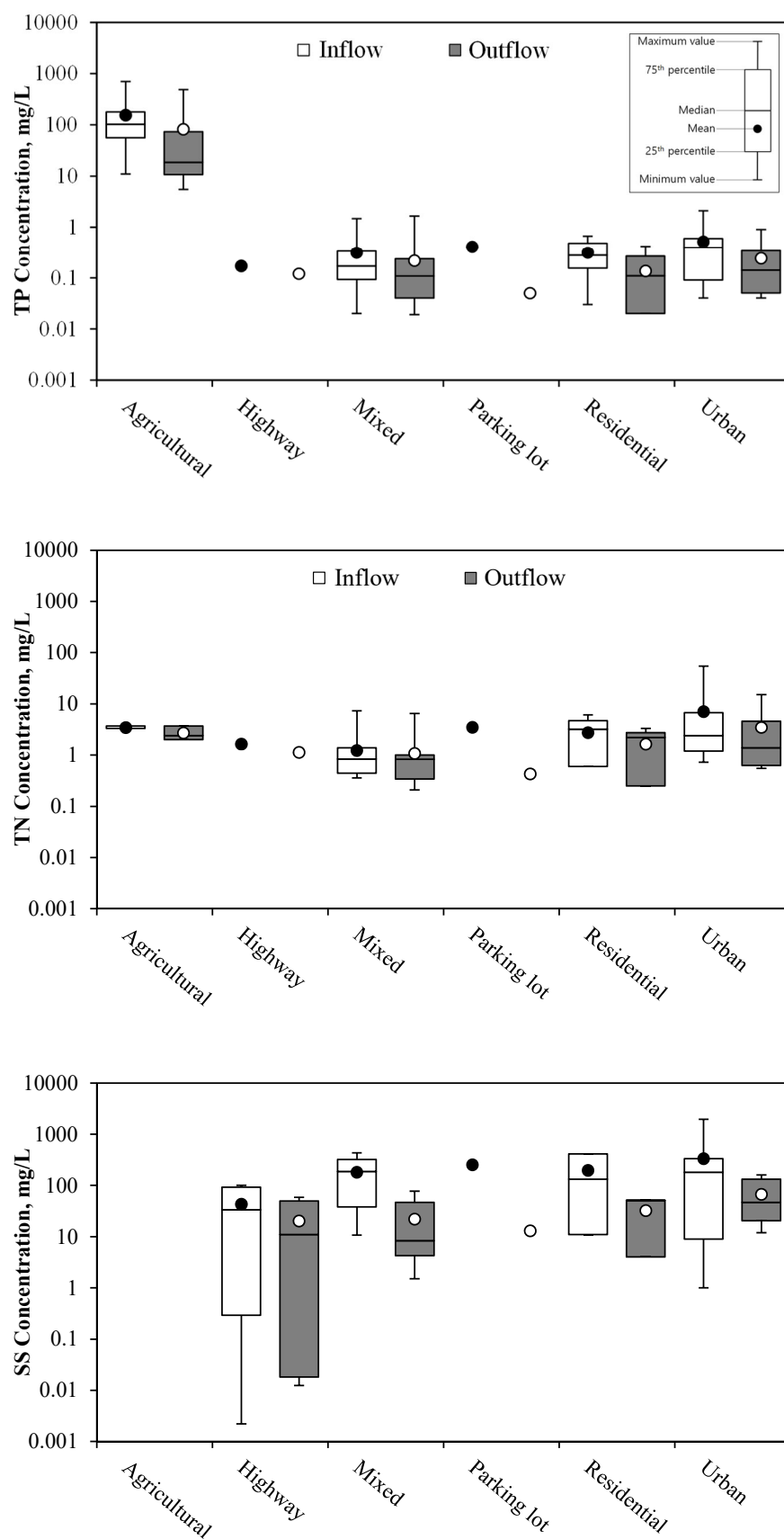


Figure S10. Synopsis of pollutant concentrations in the runoff and stormwater treatment wetlands effluent.