

Supplementary Materials:

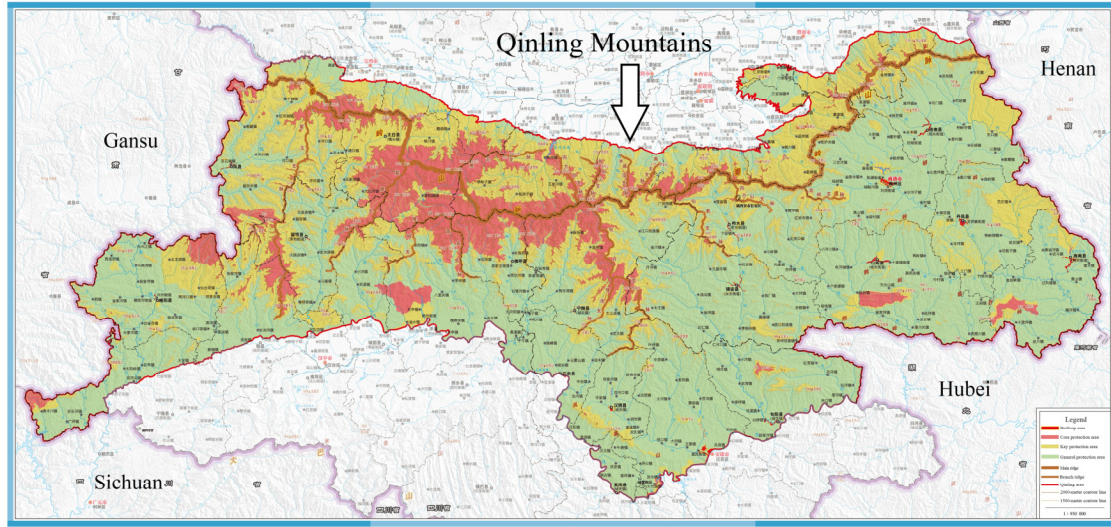


Figure S1: Ecological protection areas in the Qinling region (downloaded and briefly translated from the government website (http://www.shaanxi.gov.cn/zfxgk/zfgb/2020/d17q/202009/t20200921_1728563.html)).

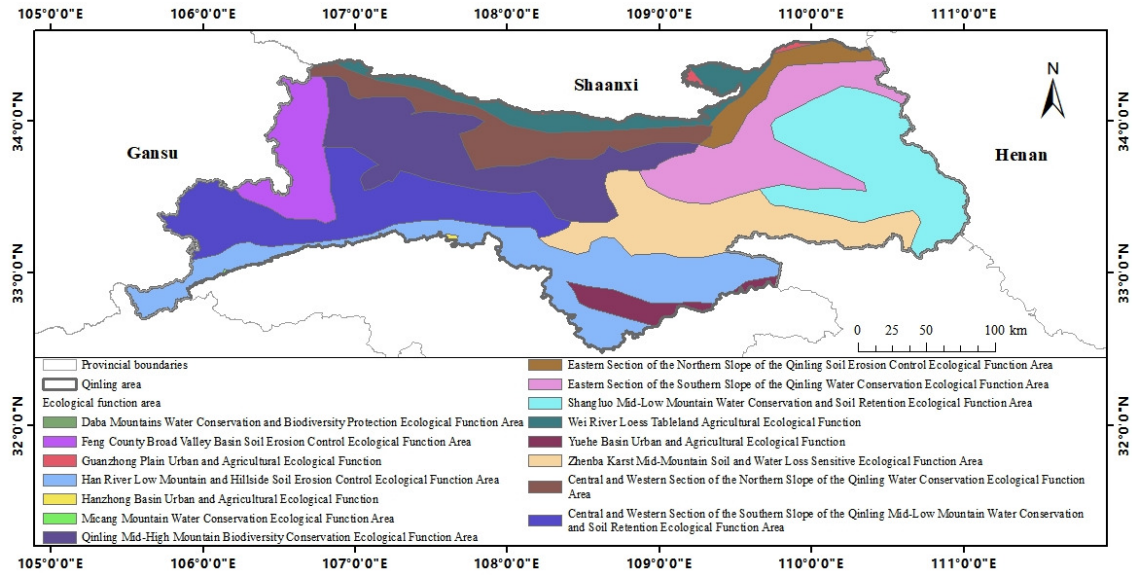


Figure S2: Ecological function area in the Qinling region

Table S1: Validation of RSEI results based on field ecological environment surveys

Number	Validation point location	RSEI grades	Surveyed land use type	Surveyed vegetation cover	Surveyed quality levels
1	110°21'27.6"E 34°28'31.0"N	good	cropland	95%	good
2	110°21'6.2"E 34°28'32.7"N	good	cropland	60%	good

3	110°20'41.6"E 34°28'26.9"N	good	cropland	70%	fair
4	110°20'7.2"E 34°28'13.62"N	good	forest	95%	good
5	110°18'36.9"E 34°27'45.9"N	moderate	cropland	70%	moderate
6	110°16'53.5"E 34°28'28.0"N	moderate	forest	50%	moderate
7	110°15'3.4"E 34°28'47.1"N	moderate	forest	85%	moderate
8	110°14'31.6"E 34°29'5.0"N	moderate	cropland	60%	moderate
9	110°13'36.9"E 34°29'18.1"N	moderate	forest	98%	good
10	110°13'20.4"E 34°29'25.1"N	moderate	forest	50%	moderate
11	110°13'3.1"E 34°29'42.6"N	moderate	forest	40%	moderate
12	107°33'19.5"E 34°4'8.7"N	good	forest	98%	good
