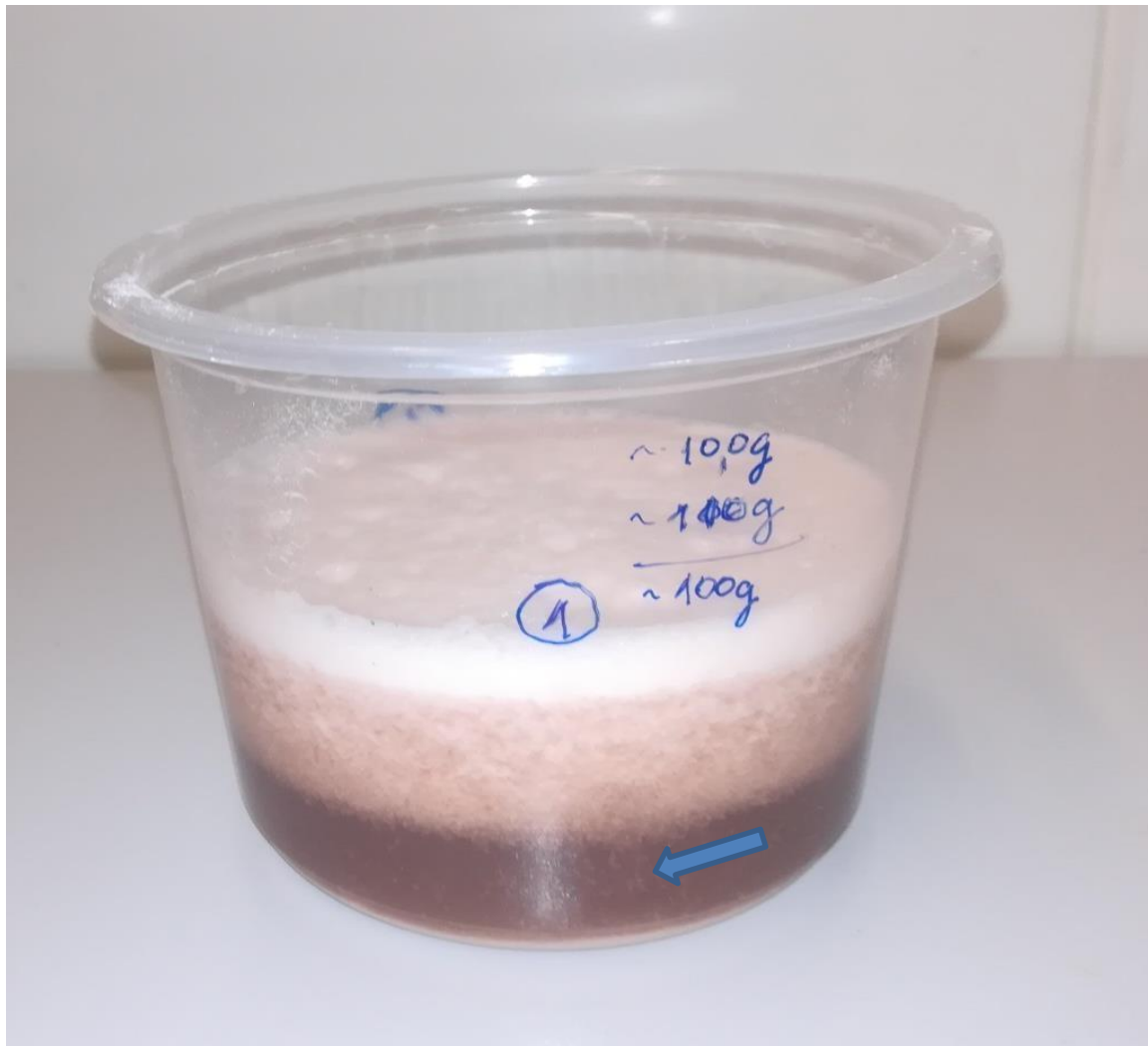


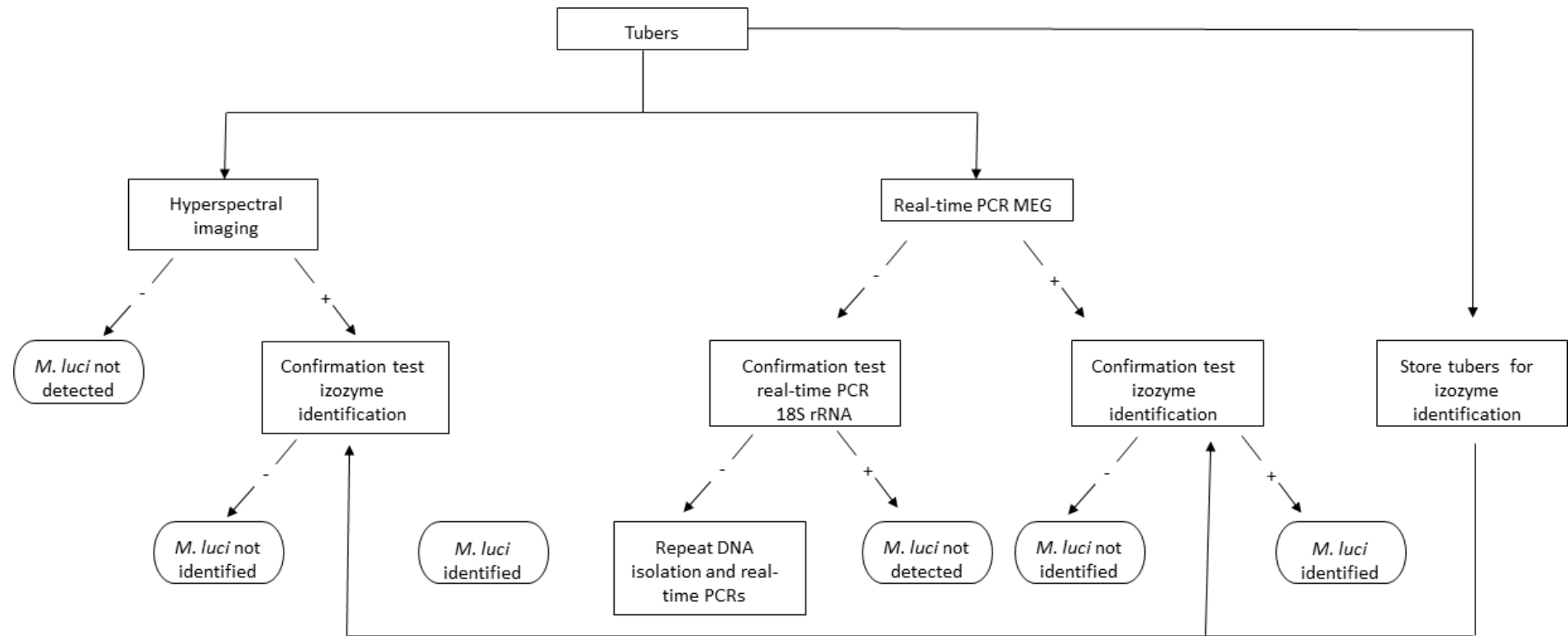
Supplementary Figures



Supplementary Figure S1. The homogenized samples were poured from the mixing bowl into a 250 ml single use plastic container and allowed to settle for three minutes. Then, 1 ml of the middle layer of the suspension (i.e. clear liquid layer designated with an arrow) was transferred to a 1.5 ml microcentrifuge and allowed to settle for 10 min.



Supplementary Figure S2. Typical thickening of the roots called gall caused by *Meloidogyne luci* infestation observed on *Solanum tuberosum* roots indicated by an arrow. *M. luci* can infest roots as well of tubers.



Supplementary Figure S3. Proposed schematic flow of *M. luci* detection and identification in seed potatoes. Real-time PCR MEG - Real-time PCR with primers specific for *Meloidogyne ethiopica* group, i.e. *M. luci*, *M. ethiopica* and *M. inornata*.