

Figure S1. Spatial distribution of annual total precipitation (1960-2019) precipitation (Data from CRU 4.04)

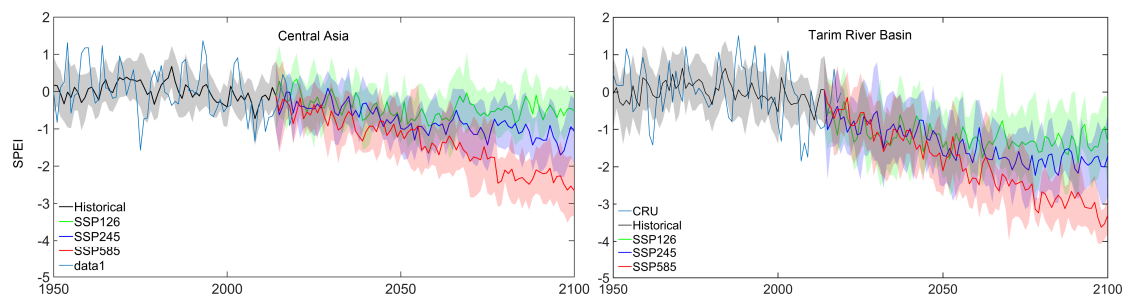


Figure S2. Changes of the SPEI in the Central Asia and Tarim River Basin

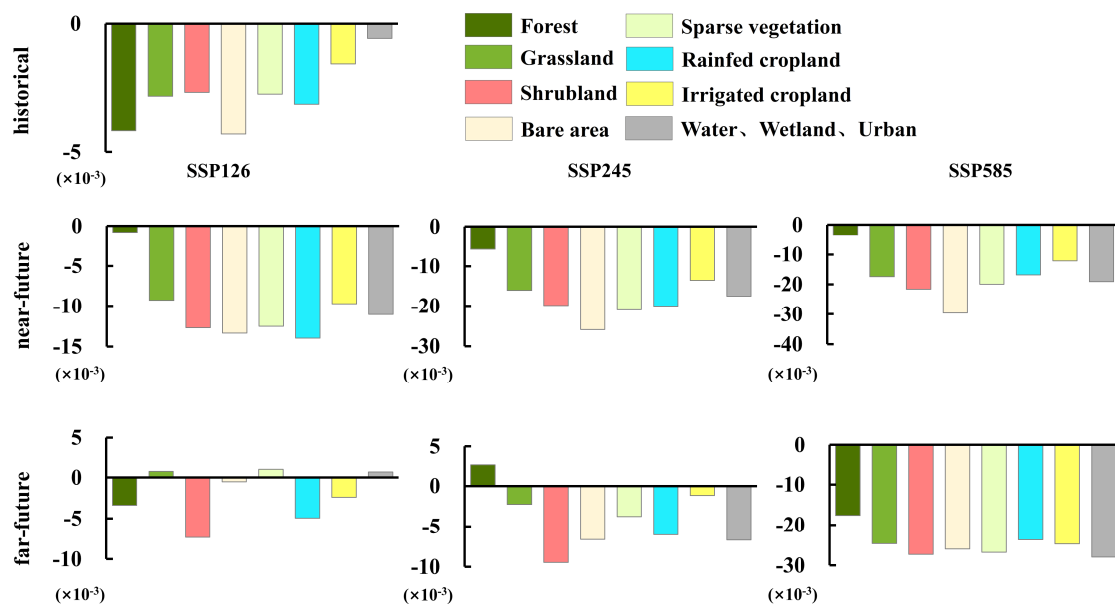


Figure S3. Sen's slope for different land cover types for three periods: historical (1960-2014), near future (2021-2060), far future (2061-2100). The land cover data selected from the most frequently occurring land cover types during 1992-2015 (data from European Space Agency)

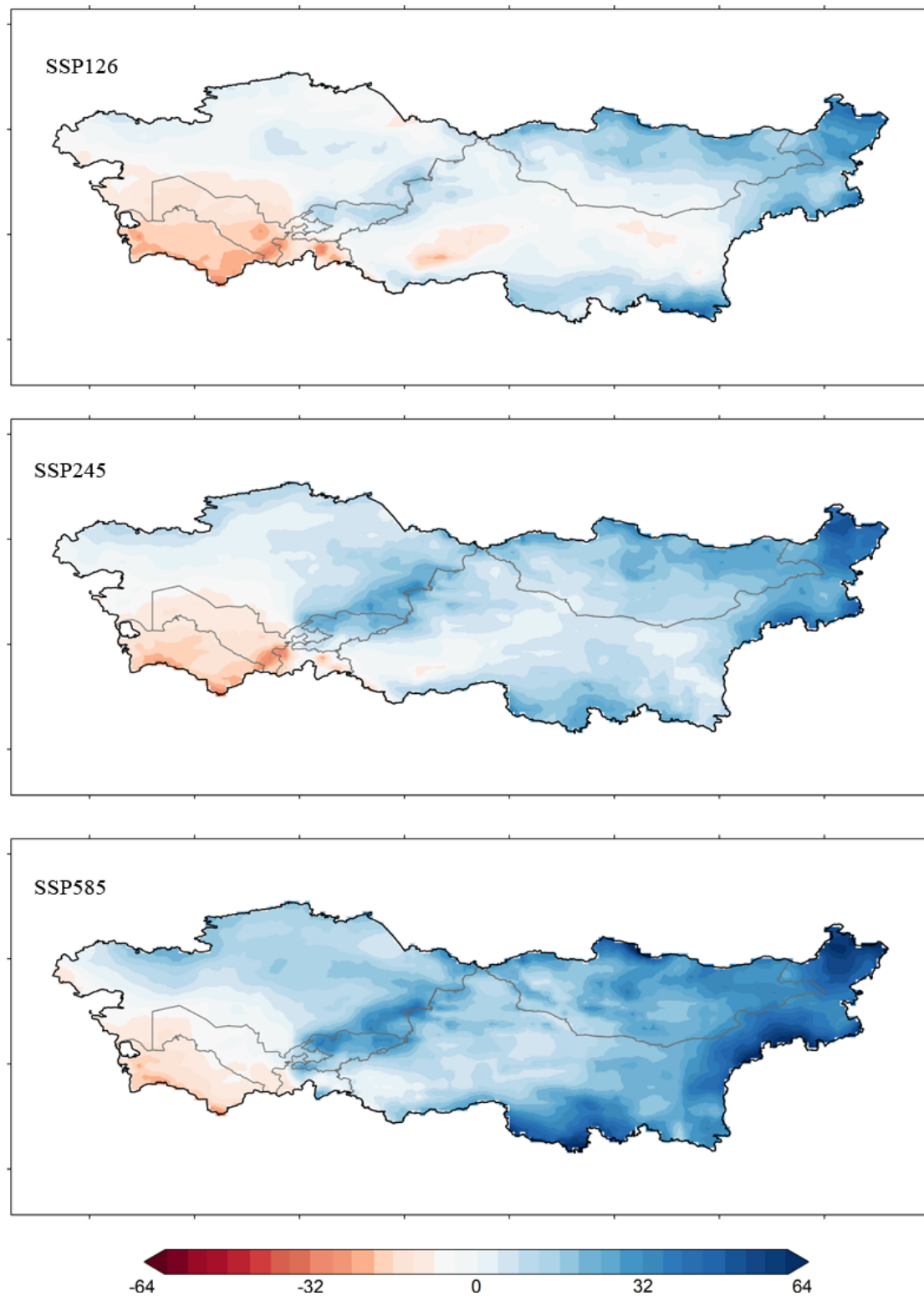


Figure S4. Spatial distribution of annual precipitation anomalies for the period 2061–2100. Relative anomalies were computed with respect to the historical period 1960–2014.