

# Supplementary Materials: A clustering approach for the analysis of InSAR time series: Application to the Bandung Basin (Indonesia)

Michelle Rygus<sup>1,\*</sup>, Alessandro Novellino<sup>2</sup>, Ekbal Hussain<sup>2</sup>, Fifik Syafiudin<sup>3</sup>, Heri Andreas<sup>4</sup>, Claudia Meisina<sup>1</sup>

<sup>1</sup>Department of Earth and Environmental Sciences, University of Pavia, Via Adolfo Ferrata 1, Pavia 27100, Italy

<sup>2</sup>British Geological Survey, Keyworth, Nottingham NG12 5GG, UK

<sup>3</sup>Geospatial Information Agency of Indonesia (Badan Informasi Geospasial), Jl. Ir. H. Juanda No. 193, Dago, Kecamatan Coblong, Kota Bandung, Jawa Barat 40135, Indonesia

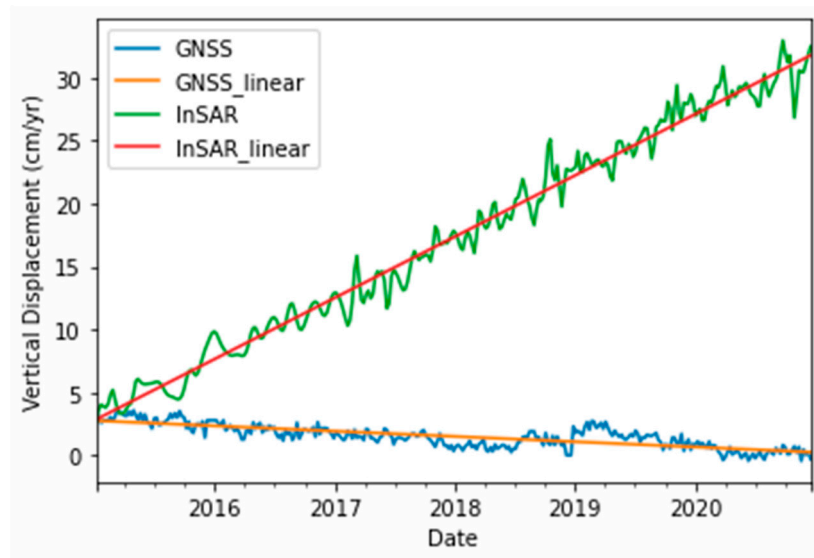
<sup>4</sup>Department of Geodesy and Geomatics Engineering, Institute of Technology Bandung, Jalan Ganesha 10, Bandung 40132, Indonesia

\*Correspondence: [michelle.rygus01@universitadipavia.it](mailto:michelle.rygus01@universitadipavia.it)

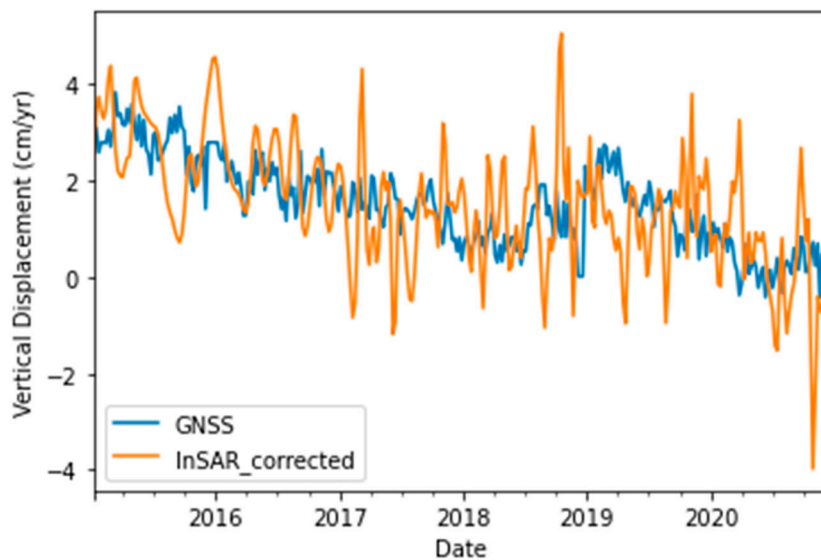
# Supplementary Contents

Supplementary Figures S1–2

Supplementary Table S1



**Figure S1:** GNSS displacement time series in the vertical direction (blue line) compared with InSAR time series (green line) prior to the reference correction. The linear regression lines for the GNSS and the InSAR time series are shown by the orange and red lines, respectively.



**Figure S2.** GNSS displacement time series in the vertical direction (blue line) compared with InSAR time series (orange line) following the reference correction.

**Table S1:** GNSS campaign data collected by students from the Institute of Technology Bandung, and the corresponding Sentinel-1 InSAR velocities, including the reference-corrected values that are used for validation.

GNSS							Sentinel-1 InSAR	
ID	Year	Latitude (°)	Longitude (°)	Ellipsoidal Height (m)	$\Delta h$ (cm)	Velocity (cm/yr)	Velocity for 2016 to 2019* (cm/yr)	Reference-corrected velocity for 2016 to 2019* (cm/yr)
SAPN	2019	6.98990	107.68718	6,836,996	-8.17	-2.72	2.30	-2.92
	2016	6.98990	107.68718	6,837,813				
BM 13	2019	7.00166	107.61802	6,832,371	-10.58	-3.53	-2.74	-2.10
	2016	7.00166	107.61802	6,833,429				
KOPO02	2019	6.98471	107.56316	6,821,098	-25.01	-8.34	-7.31	-7.11
	2016	6.98471	107.56316	6,823,599				
BM19	2019	6.96128	107.55969	6,919,394	-40.1	-13.37	-10.16	-14.45
	2016	6.96128	107.55969	6,923,404				
BM11	2019	6.96748	107.55294	6,870,303	-47.46	-15.82	-11.18	-15.48
	2016	6.96748	107.55294	6,875,049				
CMH1	2019	6.91225	107.54277	7,225,254	-5.35	-1.78	-1.11	-2.56
	2016	6.91225	107.54277	7,225,789				
P142	2019	6.96562	107.80781	7,012,924	-5.11	-1.70	-1.64	-4.47
	2016	6.96562	107.80781	7,013,435				
BM04	2019	7.04546	107.75320	6,961,698	-16.96	-5.65	-1.48	-3.01
	2016	7.04546	107.75320	6,963,394				
BM07	2019	7.01917	107.80643	6,929,788	-14.03	-4.68	-2.67	-3.06
	2016	7.01917	107.80643	6,931,191				
GDBG02	2019	6.96407	107.68793	6,849,703	-29.87	-9.96	-10.09	-13.56
	2016	6.96407	107.68793	685,269				
2445	2019	7.00980	107.71909	686,504	-9.53	-3.18	-2.71	-3.32
	2016	7.00980	107.71909	6,865,993				
BM12	2019	7.03062	107.59366	6,891,121	-17.07	-5.69	0.01	-2.53
	2016	7.03062	107.59366	6,892,828				

\* Linear velocity adjusted to coincide with the same time period as the GNSS data