

Supplementary Files for Online Publication Only

Typhoon-Induced Extreme Sea Surface Temperature Drops in the Western

North Pacific and the Impact of Extra Cooling Due to Precipitation

Jia-Yi Lin ¹, Hua Ho ¹, Zhe-Wen Zheng ^{1,*}, Yung-Cheng Tseng ^{1,2} and Da-Guang Lu ^{1,2}

¹ Department of Earth Science, National Taiwan Normal University, Taipei 11677, Taiwan

² Department of Earth and Life Science, University of Taipei, Taipei 10048, Taiwan

* Correspondence: zwz@ntnu.edu.tw

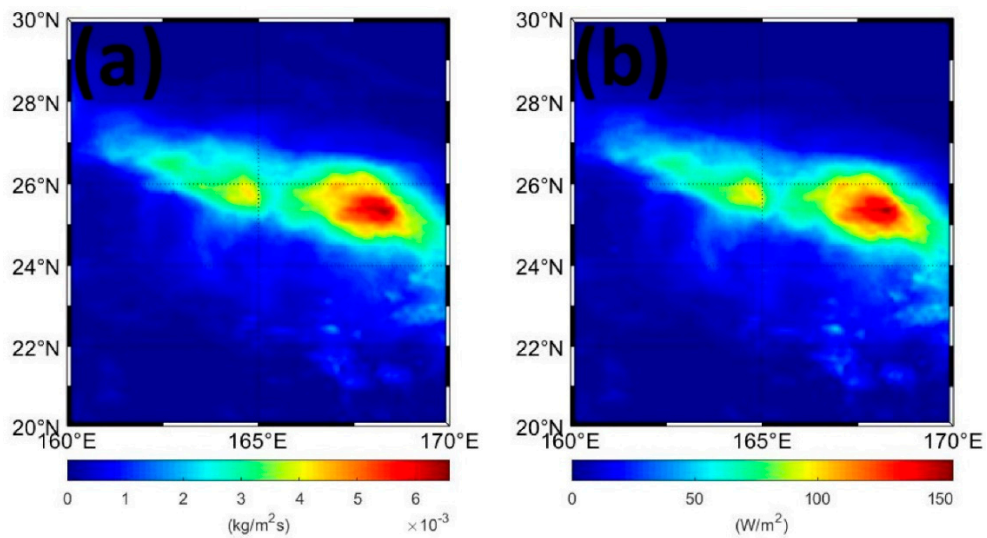


Figure S1. (a) Maximum daily accumulated precipitation along Kilo's track. (b) Oceanic precipitation sensible heat flux (Q_p) along Kilo's track.

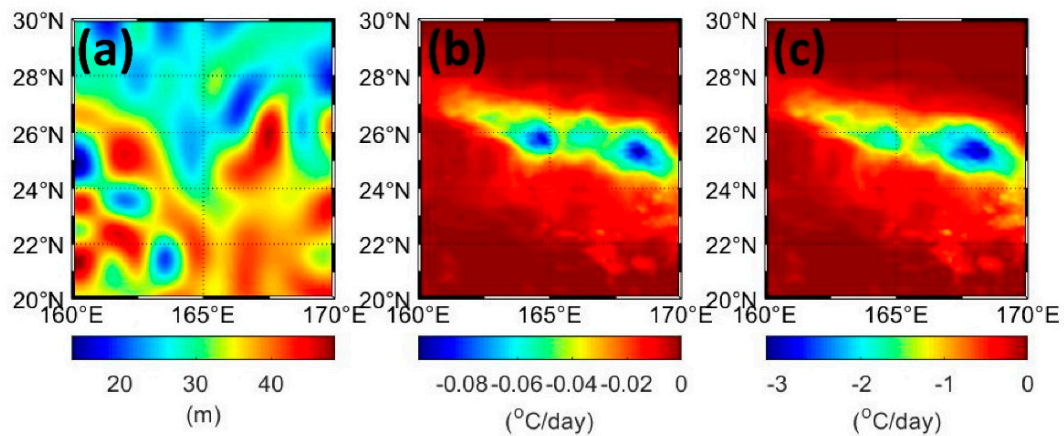


Figure S2. (a) Argo mixed layer climatological mixed layer depth for September. (b) ΔT with H =climatological mixed layer depth. (c) ΔT with H =1m.