

Table S1. Characteristics of patients alive or deceased at 2 years according to sex. Data shown as mean \pm SD, n (%).

	Male			Female		
	Alive n=19 (46%)	Deceased n=22 (54%)	p value	Alive n=11 (58%)	Deceased n=8 (42%)	p value
<i>Demographic data</i>						
Age (years)	78.7 \pm 4.5	83.6 \pm 5.8	0.005	81.9 \pm 5.1	84.5 (\pm 5.4)	0.32
Dialysis vintage (months)	44.5 \pm 41.2	51.4 \pm 39.1	0.585	53.9 \pm 45.5	52.3 (\pm 42)	0.558
<i>Comorbidities</i>						
Diabetes	9.0 (47.4%)	9.0 (40.9%)	0.78	9.0 (81.8%)	4.0 (50.0%)	0.141
Cardiovascular disease	11.0 (57.9%)	21.0 (95.5%)	0.004	4.0 (36.4%)	4.0 (50.0%)	0.552
Malignancy	6.0 (31.6%)	11.0 (50.0%)	0.233	3.0 (27.3%)	1.0 (12.5%)	0.435
<i>Analytical data</i>						
Albumin (g/dl)	3.7 \pm 0.4	3.7 \pm 0.4	0.476	3.7 \pm 0.4	3.4 \pm 0.8	0.284
Hemoglobin (g/dl)	11.5 \pm 1.1	11.3 \pm 1.0	0.682	11.6 \pm 0.9	10.8 \pm 1.3	0.119
C Reactive Protein (mg/L)	0.8 \pm 0.7	2.3 \pm 3.8	0.088	0.7 \pm 0.7	3.0 \pm 3.7	0.055
25OH Vitamin D ₃ (ng/ml)	18.4 \pm 8.7	23.6 \pm 15.7	0.207	20.9 \pm 12.8	24.2 \pm 15.8	0.621
Kt/V _{urea}	1.7 \pm 0.4	1.7 \pm 0.4	0.546	2.1 \pm 0.3	1.9 \pm 0.3	0.061
<i>Anthropometric data</i>						
Body mass index (kg/m ²)	26.5 \pm 4.1	25.1 \pm 2.6	0.190	23.8 \pm 4.3	24.4 \pm 3.7	0.766
Mid-Upper Arm Circumference (cm)	27.5 \pm 2.8	25.9 \pm 2.3	0.065	25.4 \pm 3.5	26.2 \pm 2.6	0.621
Waist Perimeter (cm)	96.7 \pm 7.1	97.2 \pm 8.2	0.841	84.9 \pm 12.9	82.3 \pm 2.0	0.612
Hip Perimeter (cm)	102.3 \pm 7.3	101.0 \pm 6.7	0.557	96.4 \pm 8.7	101.5 \pm 4.2	0.178
Waist hip index	0.9 \pm 0.0	1.0 \pm 0.1	0.424	0.9 \pm 0.1	0.8 \pm 0.0	0.028
Tricipital Fold (mm)	1.2 \pm 0.5	1.0 \pm 0.3	0.296	1.3 \pm 0.5	1.6 \pm 0.4	0.300
Abdominal Fold (mm)	21.0 \pm 7.6	18.4 \pm 5.8	0.337	15.6 \pm 4.9	16.1 \pm 3.8	0.866
Subscapular Fold (mm)	17.0 \pm 6.8	15.9 \pm 6.7	0.641	13.5 \pm 9.5	12.8 \pm 3.8	0.865
<i>Body composition</i>						
Muscle Mass (kg)	22.8 \pm 2.8	19.4 \pm 2.7	<0.001	15.1 \pm 1.7	16.2 \pm 2.1	0.205
Fast Mass (kg)	23.7 \pm 6.1	22.2 \pm 4.1	0.342	21.5 \pm 8.8	22.7 \pm 5.5	0.741
Total Body Water (l)	37.7 \pm 4.4	33.6 \pm 5.1	0.009	24.8 \pm 3.1	26.9 \pm 3.0	0.158
Overhydration (l)	1.1 \pm 1.7	1.3 \pm 1.5	0.728	0.7 \pm 1.5	0.8 \pm 0.9	0.787

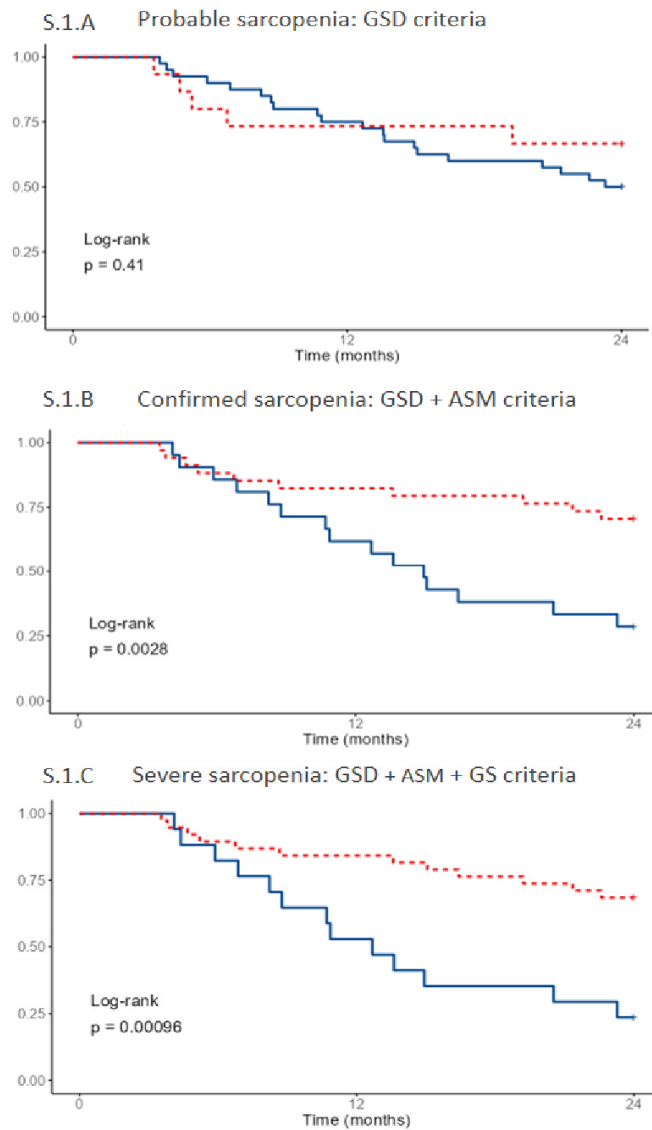
*p<0.05 in bold. **p Male vs Female

Table S2. Univariate hazard ratio (HR), 95% confidence interval (95% CI) for all-cause death by diagnostic algorithm.

Variable	Value	n (%)	HR (95% CI)
GSD	N	15 (27.3)	-
	Y	40 (72.7)	3.80 (0.51-28.11, p=0.411)
STS5	N	7 (11.7)	-
	Y	53 (88.3)	2.31 (0.55-9.72, p=0.252)
GSD+ASM	N	37 (61.7)	-
	Y	23 (38.3)	3.00 (1.44-6.24, p=0.003)
STS5+ASM	N	38 (63.3)	-
	Y	22 (36.7)	2.76 (1.34-5.71, p=0.006)
GSD &/or STS5+ ASM	N	36 (60.0)	-
	Y	24 (40.0)	2.68 (1.29-5.57, p=0.008)
GSD+ASM+GS	N	41 (68.3)	-
	Y	19 (31.7)	3.33 (1.61-6.89, p=0.001)
STS5+ASM+GS	N	41 (68.3)	-
	Y	19 (31.7)	3.33 (1.61-6.89, p=0.001)
GSD &/or STS5+ASM+GS	N	41 (68.3)	-
	Y	19 (31.7)	3.33 (1.61-6.89, p=0.001)
GSD+ASM+TUG	N	49 (81.7)	-
	Y	11 (18.3)	5.60 (2.49-12.58, p<0.001)
STS5+ASM+TUG	N	49 (81.7)	-
	Y	11 (18.3)	5.60 (2.49-12.58, p<0.001)
GDS &/or STS5+ASM+TUG	N	49 (81.7)	-
	Y	11 (18.3)	5.60 (2.49-12.58, p<0.001)
GSD+ASM+SPPB	N	40 (66.7)	-
	Y	20 (33.3)	2.95 (1.43-6.09, p=0.003)
STS5+ASM+SPPB	N	39 (65.0)	-
	Y	21 (35.0)	2.60 (1.26-5.37, p=0.009)
GDS &/or STS5+ASM+SPPB	N	39 (65.0)	-
	Y	21 (35.0)	2.60 (1.26-5.37, p=0.009)
GDS &/or STS5+ASM+GS &/or TUG &/or SPPB	N	38 (63.3)	-
	Y	22 (36.7)	2.76 (1.34-5.71, p=0.006)

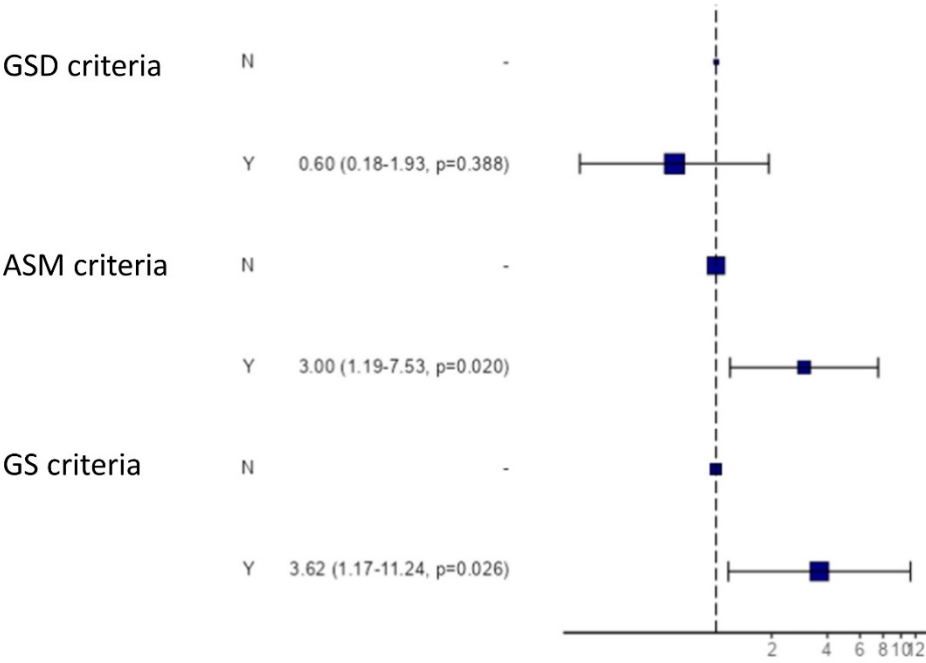
N: no, Y: yes

Figure S1. Survival according to EGWSOP2 criteria at 24 months for non-COVID-19 mortality. COVID-19 deaths were censored



Vertical axis shows survival. Probable of severe sarcopenia in blue, no sarcopenia in discontinuous red. Survivors, $n=30$. Deceased, $n=25$. GSD: grip strength by dynamometry, ASM: appendicular skeletal muscle mass, GS: gait speed.

Figure S2. Non-COVID-19 multivariate mortality risk according to EGWSOP2 criteria at 24 months. Data shown as hazard ratio and 95% confidence interval.



Survivors, n=30. Deceased, n=25. GSD: grip strength by dynamometry, ASM: appendicular skeletal muscle mass, GS: gait speed.