

Supplementary Materials

SCFAs Enhance Stress Resilience of Mice Fed by High-Fructose Diet through Improving Hippocampal Neurogenesis Decline and Blood–Brain Barrier Damage

Chuan-Feng Tang¹, Cong-Ying Wang¹, Jun-Han Wang¹, Qiao-Na Wang¹, Shen-Jie Li², Han-Ou Wang², Feng Zhou^{2,*} and Jian-Mei Li^{1,*}

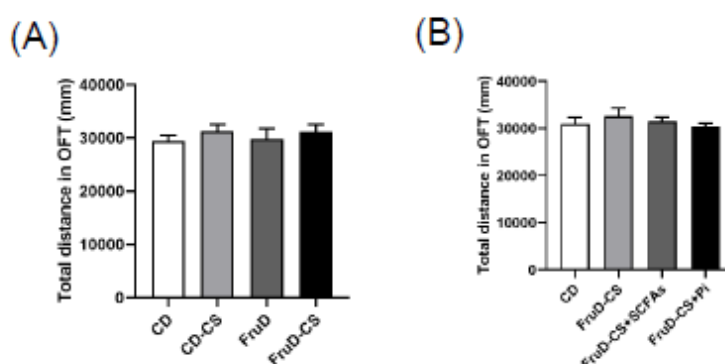


Figure S1. FruD, chronic stress or SCFAs supplementation failed to change the spontaneous activity of mice in OFT. Total distance of mice in OFT. **A,B**