

Table S1. TaqMan probe assay IDs.

Gene name	Assay IDs
ATGL	Mm00503040_m1
CD36	Mm00432403_m1
LPL	Mm00443451_m1
LXR α	Mm00434764_m1
SREBP-1c	Mm00550338_m1
CPT1A	Mm00550442_m1
SREBP-2	Mm01306292_m1
HMGCR	Mm01282499_m1
HL	Mm01171487_m1
ApoA-I	Mm00437569_m1
NF- κ B p65	Mm00501346_m1
iNOS	Mm00440502_m1
p47 ^{phox}	Mm00447921_m1
SOD1	Mm01344233_g1
CAT	Mm00437992_m1
Bax	Mm00432051_m1
Bcl-2	Mm00477631_m1
GAPDH	Mm99999915_g1

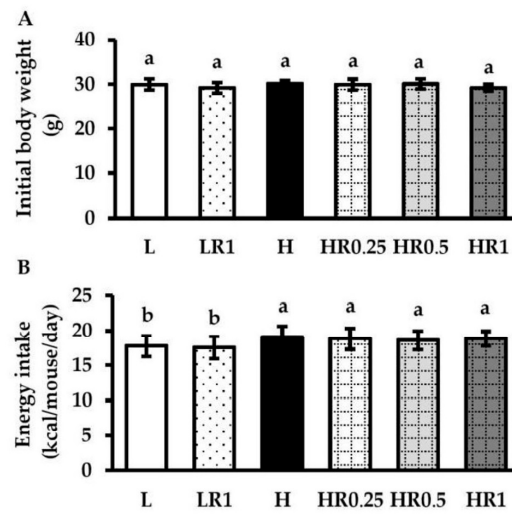


Figure S1. Effects of RRBE on initial body weight (A) and energy intake (B) in mice fed with experimental diet. Values are means \pm SD; 6 mice/group. Statistically significant difference at $p < 0.05$ was analyzed using one-way ANOVA with Tukey's test and is indicated by different letters above error bars. L, LFD and distilled water co-treated group; LR1, LFD and high-dose (1 g/kg) RRBE co-treated group; H, HFD and distilled water co-treated group; HR0.25, HFD and low-dose (0.25 g/kg) RRBE co-treated group; HR0.5, HFD and middle-dose (0.5 g/kg) RRBE co-treated group; HR1, HFD and high-dose RRBE co-treated group.