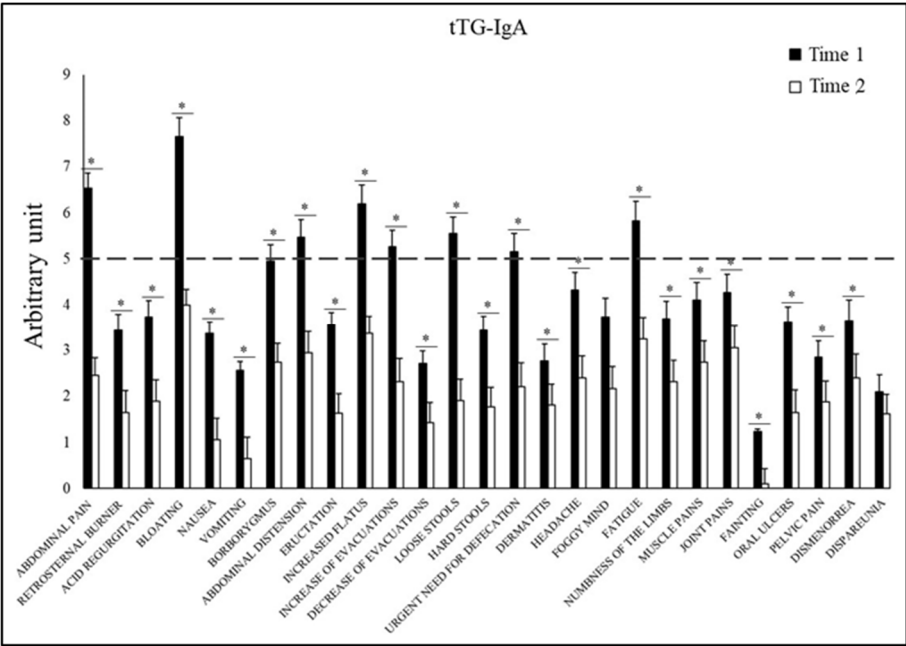


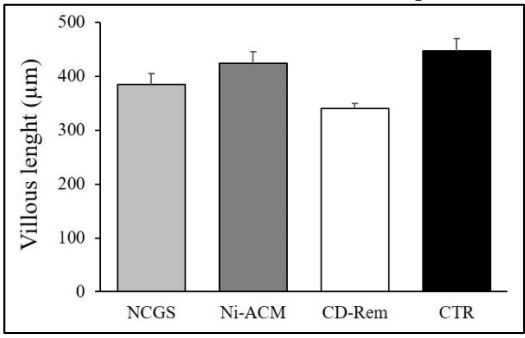
Supplemental Table S1: Gastrointestinal Symptom Rating Scale (GSRS) questionnaire, modified according to the Salerno Experts' Criteria

ABDOMINAL PAIN	0	1	2	3	4	5	6	7	8	9	10
RETROSTERNAL BURNER	0	1	2	3	4	5	6	7	8	9	10
ACID REGURGITATION	0	1	2	3	4	5	6	7	8	9	10
BLOATING	0	1	2	3	4	5	6	7	8	9	10
NAUSEA	0	1	2	3	4	5	6	7	8	9	10
VOMITING	0	1	2	3	4	5	6	7	8	9	10
BORBORYGMUS	0	1	2	3	4	5	6	7	8	9	10
ABDOMINAL DISTENSION	0	1	2	3	4	5	6	7	8	9	10
ERUCTATION	0	1	2	3	4	5	6	7	8	9	10
INCREASED FLATUS	0	1	2	3	4	5	6	7	8	9	10
INCREASE OF EVACUATIONS	0	1	2	3	4	5	6	7	8	9	10
DECREASE OF EVACUATIONS	0	1	2	3	4	5	6	7	8	9	10
LOOSE STOOLS	0	1	2	3	4	5	6	7	8	9	10
HARD STOOLS	0	1	2	3	4	5	6	7	8	9	10
URGENT NEED FOR DEFECATION	0	1	2	3	4	5	6	7	8	9	10
DERMATITIS	0	1	2	3	4	5	6	7	8	9	10
HEADACHE	0	1	2	3	4	5	6	7	8	9	10
FOGGY MIND	0	1	2	3	4	5	6	7	8	9	10
FATIGUE	0	1	2	3	4	5	6	7	8	9	10
NUMBNESS OF THE LIMBS	0	1	2	3	4	5	6	7	8	9	10
MUSCLE PAINS	0	1	2	3	4	5	6	7	8	9	10
JOINT PAINS	0	1	2	3	4	5	6	7	8	9	10
FAINTING	0	1	2	3	4	5	6	7	8	9	10
ORAL ULCERS	0	1	2	3	4	5	6	7	8	9	10
PELVIC PAIN	0	1	2	3	4	5	6	7	8	9	10
DISMENORREA	0	1	2	3	4	5	6	7	8	9	10
DISPAREUNIA	0	1	2	3	4	5	6	7	8	9	10
OTHER:	0	1	2	3	4	5	6	7	8	9	10

NB: mark with an X the box corresponding to the intensity of the symptom (min = 0, max = 10)



Supplemental Figure S1. Comparison of GSRS questionnaire results at Time 1 and Time 2 in tTG-IgA positive patients. The bar graphs represent the mean \pm SEM of the GSRS score for each symptom. The GSRS questionnaire is considered positive if at least 3 of the 27 symptoms considered have a score ≥ 5 . The red line indicates the cut-off point. * p -value < 0.05 for Time 2 (after their specific diet) versus Time 1 (on their regular diet) (T -Test).



Supplemental Figure S2. Histomorphometric evaluation of villous lengths. The bar graphs represent the villous length in μm . NCGS: non-celiac gluten sensitivity; Ni-ACM: nickel allergic contact mucositis; CD-Rem: celiac disease in remission; CTR: controls.

#

#