

Supplementary Materials: Venomics Reveals a Non-Compartmentalised Venom Gland in the Early Diverged Vermivorous *Conus distans*

Jutty RaJan Prashanth, Sebastien Dutertre, Subash Kumar Rai and Richard J. Lewis

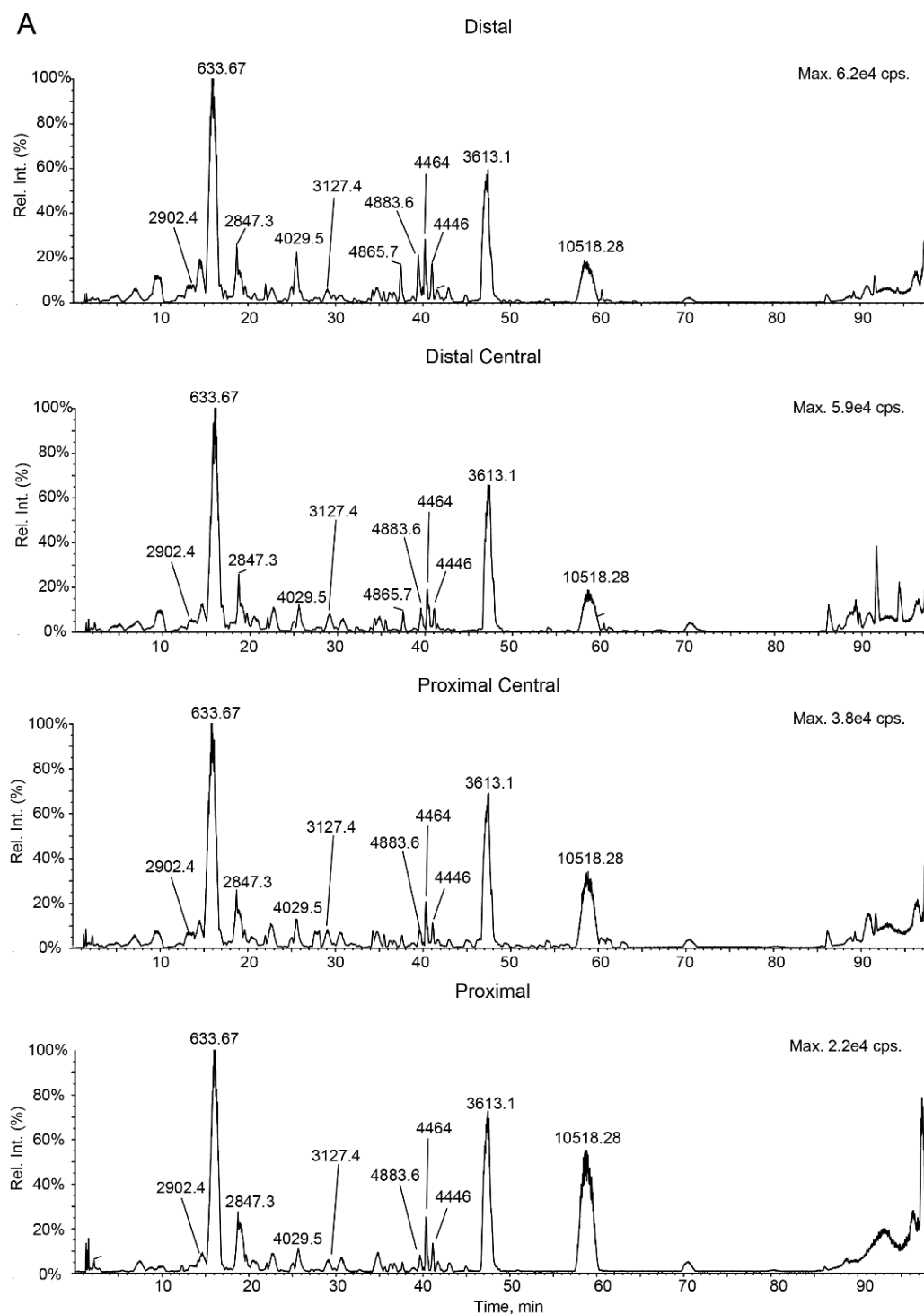
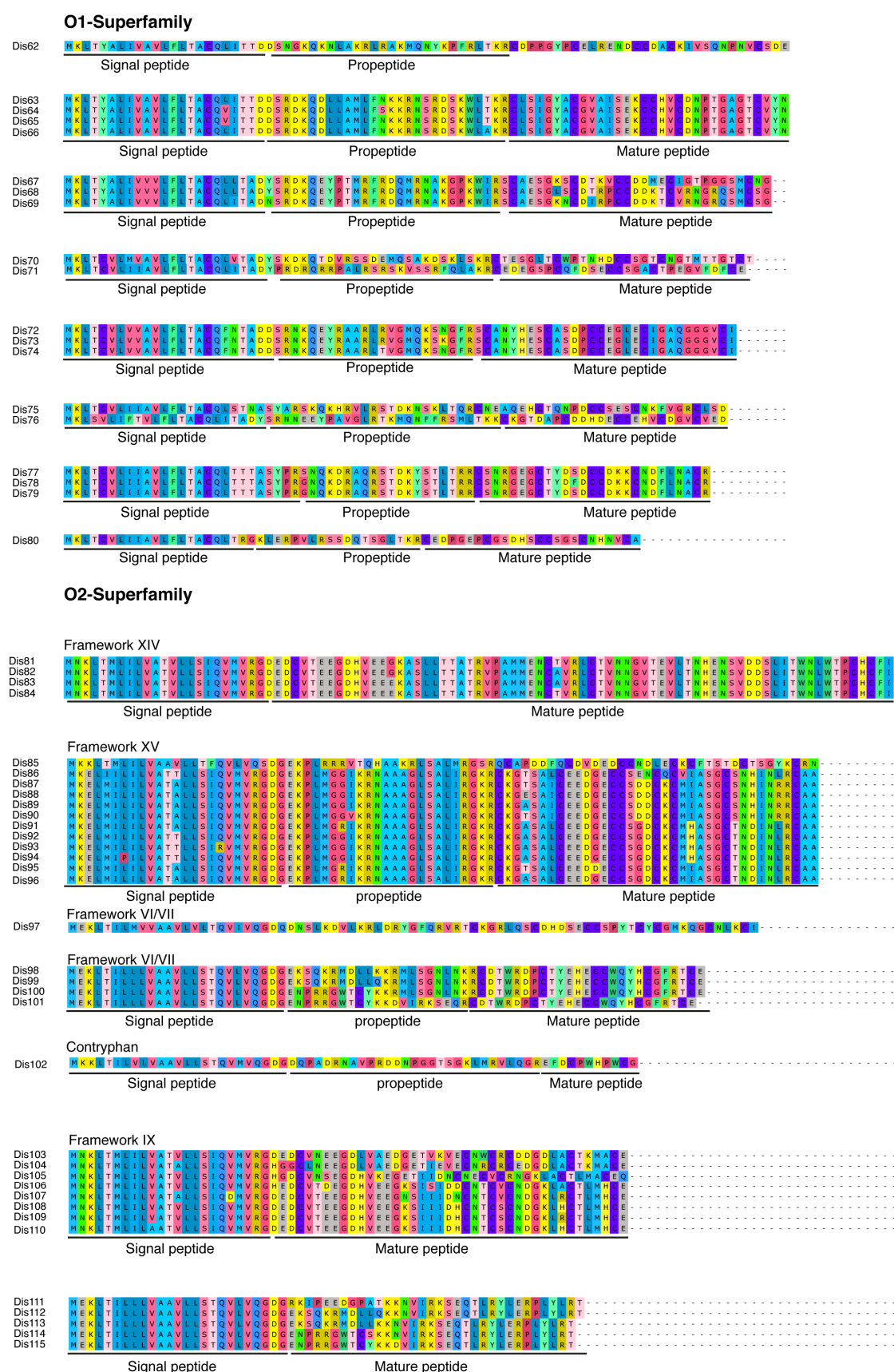
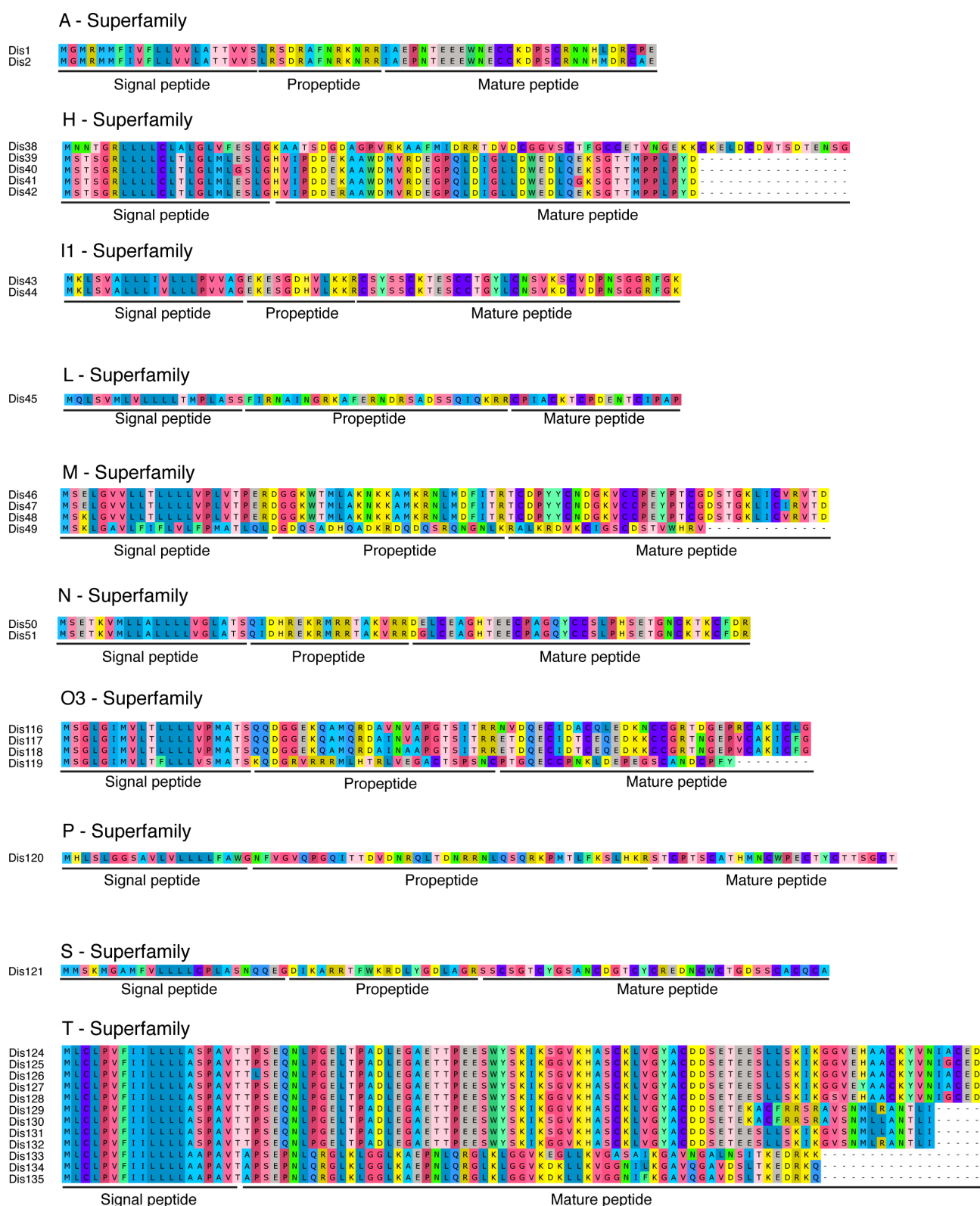


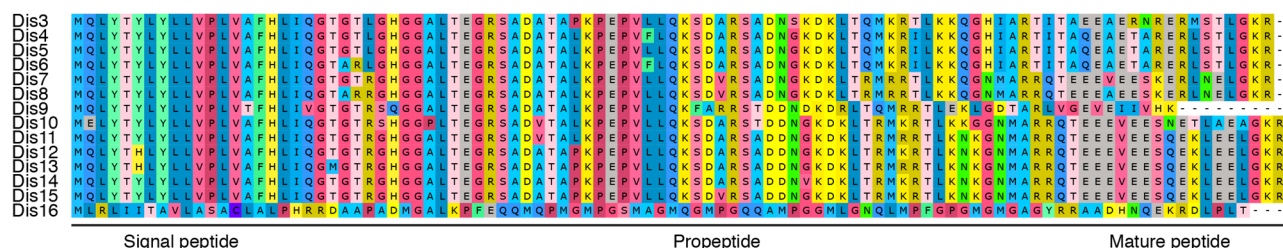
Figure S1. LC-ESI-MS analysis of the four duct sections from *C. distans* specimen 2.

Figure S2. O1 and O2 superfamilies in *C. distans*.

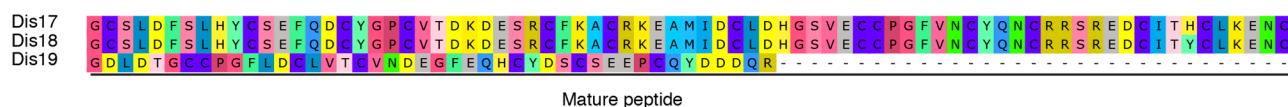
Figure S3. Other known superfamilies in *C. distans*.

A

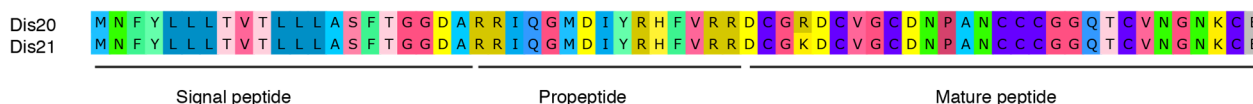
Conantokins



Conikotikots

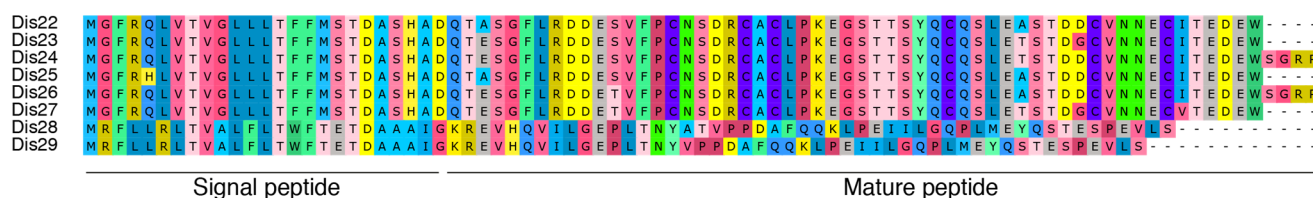


Conogranulins

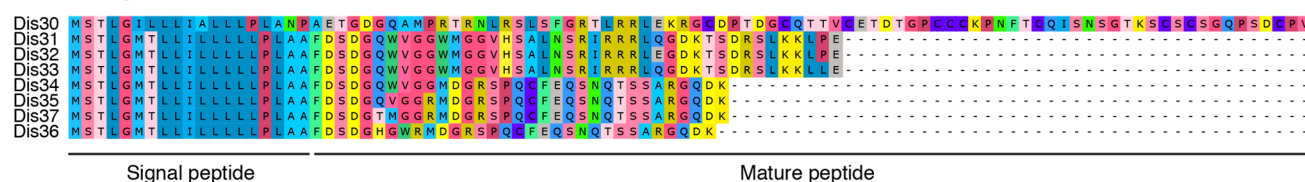


B

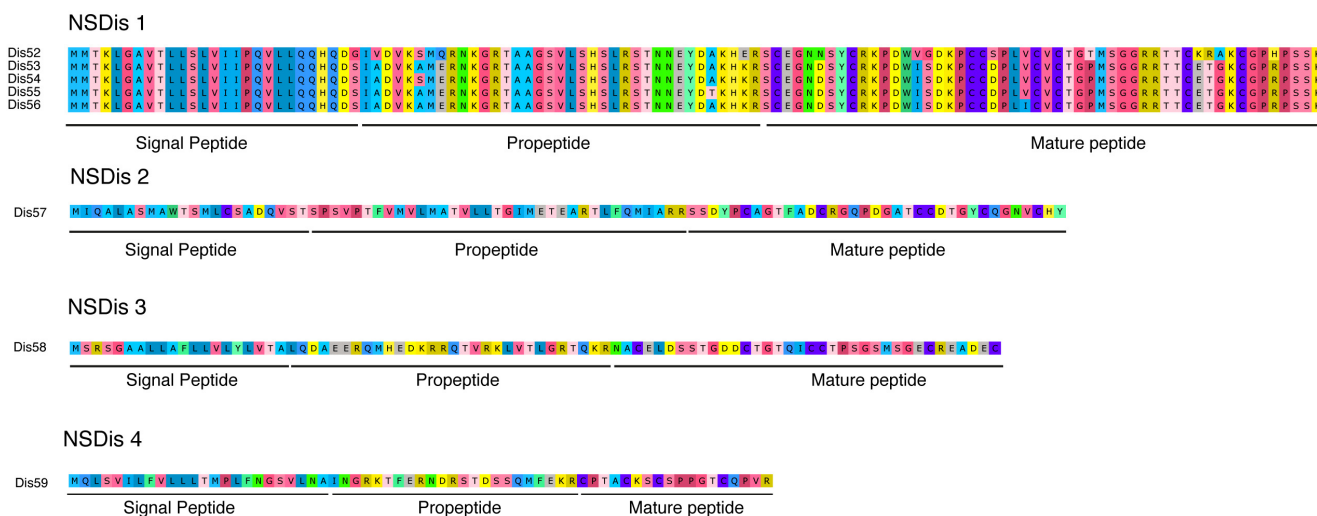
Divergent M---L-LTVA



Divergent MSTLGMTLL

Figure S4. Conopeptides (A) and divergent superfamilies (B) in *C. distans*.

A



B

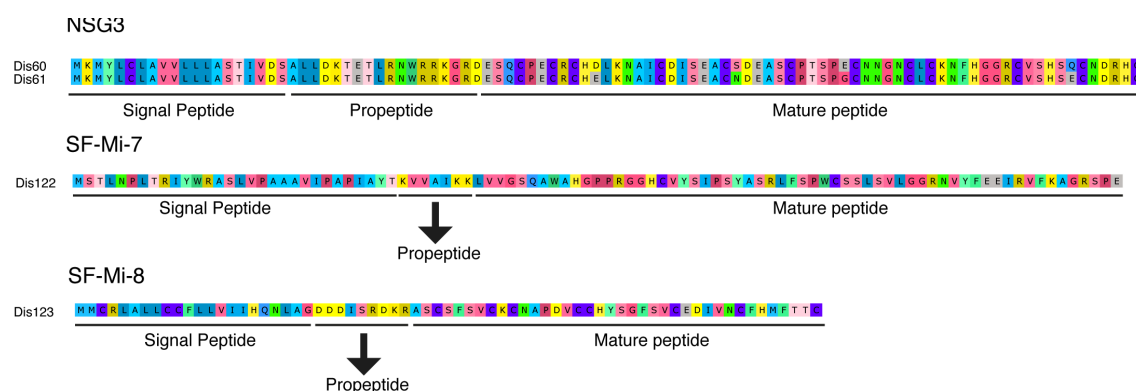


Figure S5. Novel superfamilies in *C. distans*. (A) and (B) indicate novel superfamilies reported only in *C. distans* and novel superfamilies also reported in other species.