

Supplementary Materials: Scorpion Peptide Smp24 Exhibits a Potent Antitumor Effect on Human Lung Cancer Cells by Damaging the Membrane and Cytoskeleton In Vivo and In Vitro

Ruiyin Guo, Junfang Liu, Jinwei Chai, Yahua Gao, Mohamed A. Abdel-Rahman and Xueqing Xu

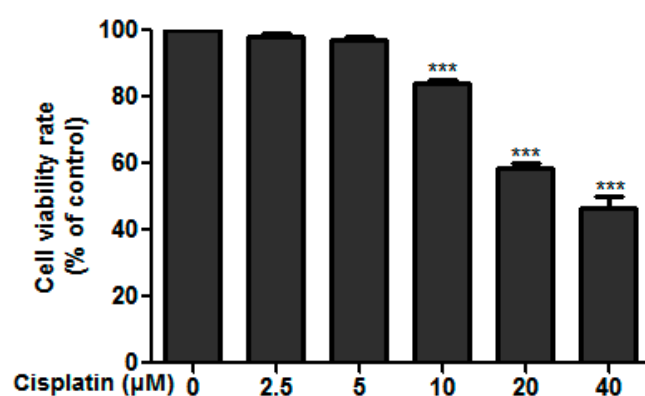


Figure S1. Viability of A549 cells treated with cisplatin for 24 h.

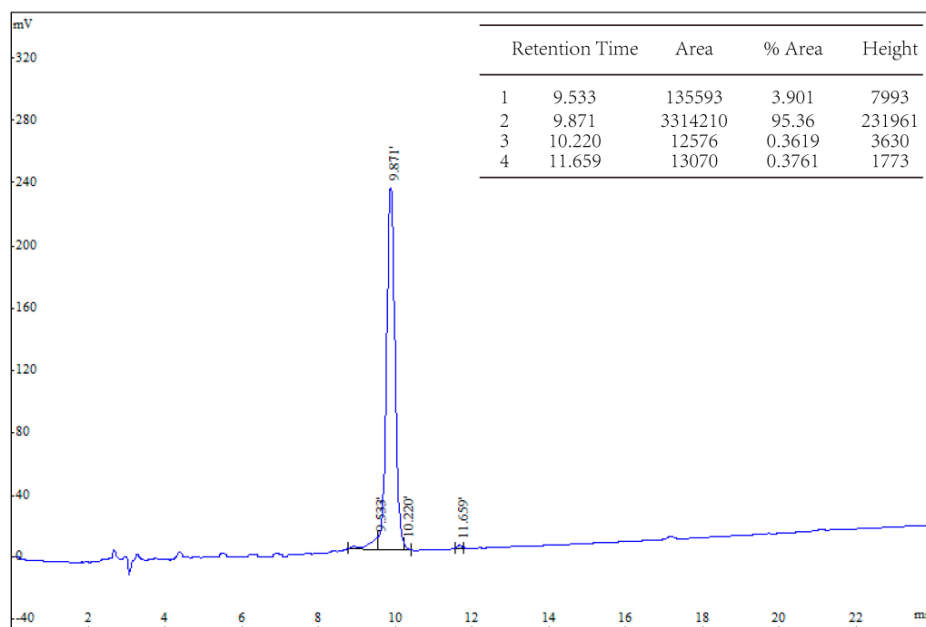


Figure S2. RP-HPLC purification of Smp24.

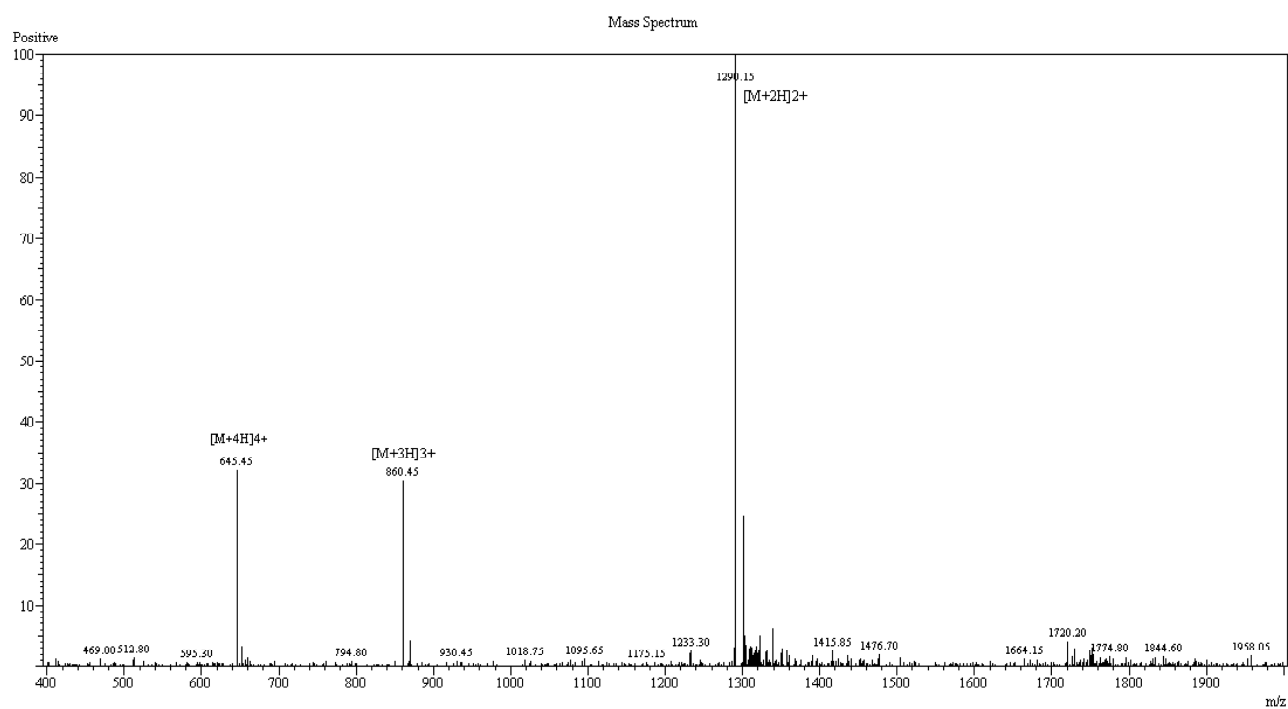


Figure S3. MALDI-TOF-MS identification of Smp24.

Table S1. IC₅₀ values and selectivity index of cancer cell lines treated with Smp24 for 24 h.

	IC ₅₀ (μM)	Selectivity Index
A549	4.06 ± 0.60	3.61
H3122	4.64 ± 0.18	3.16
PC-9	6.34 ± 0.53	2.32
H460	7.07 ± 0.81	2.07
MRC-5	14.68 ± 0.79	-