

Supplementary Materials: Artificial Substrates Coupled with qPCR (AS-qPCR) Assay for the Detection of the Toxic Benthopelagic Dinoflagellate *Vulcanodinium rugosum*

Aurélien Bouquet, Christine Felix, Estelle Masseret, Coralie Reymond, Eric Abadie, Mohamed Laabir and Jean Luc Rolland

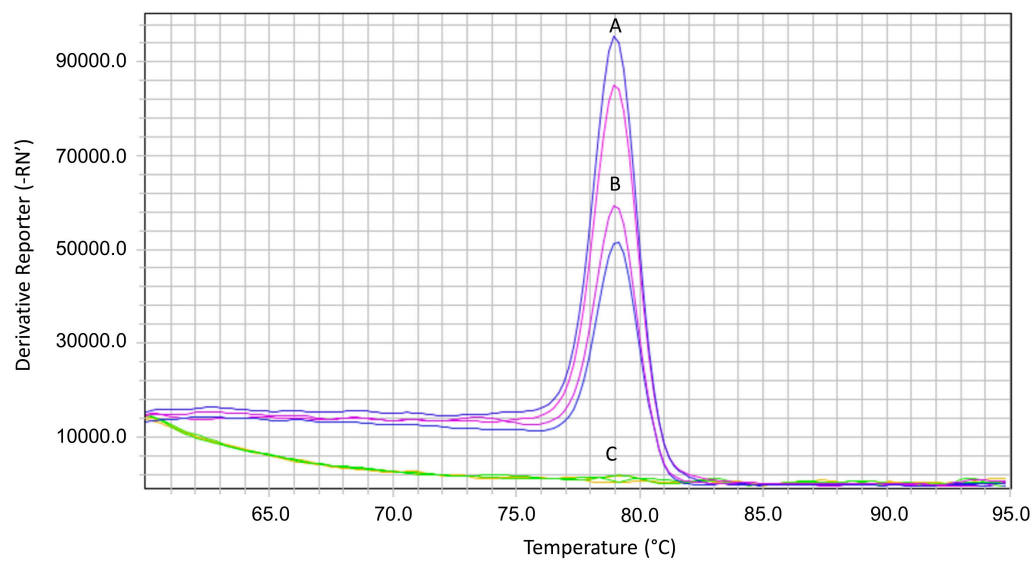


Figure S1: Derivatives melting curve plot for A. *Vulcanodinium rugosum* DNA extract 2-fold diluted, B. Field sample, Vic lagoon, 7th July 2021, C. Field sample, Vic lagoon, 2nd December 2021.