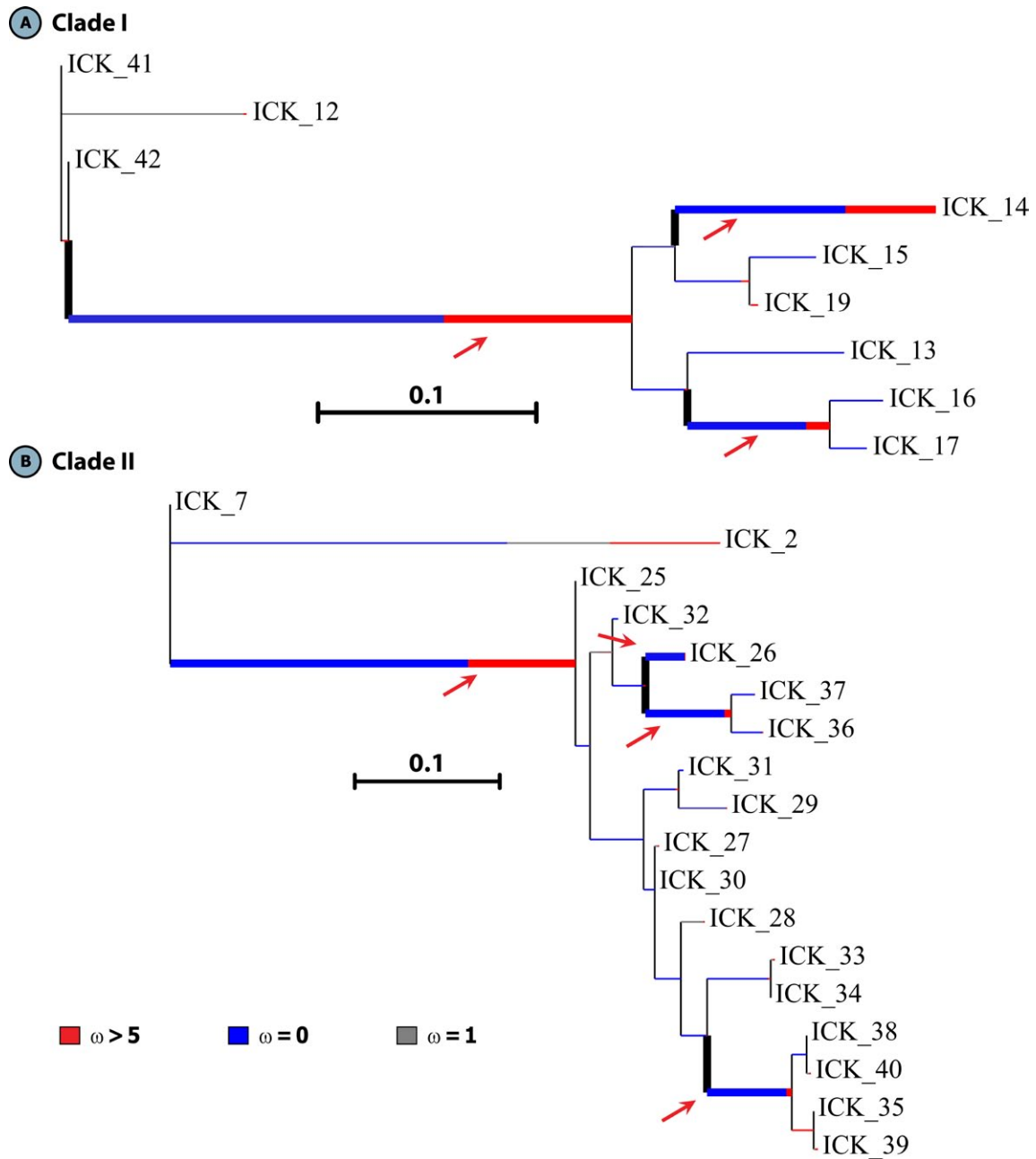


Supplementary Figure 2. Branch-site REL of *Trittame loki* major ICK toxin clades



Branch-site REL: The hue of each colour indicates strength of selection, with primary red corresponding to $\omega > 5$, primary blue to $\omega = 0$ and grey to $\omega = 1$. The width of each colour component represents the proportion of sites in the corresponding class. Thicker branches have been classified as undergoing episodic diversifying selection (indicated by arrows) by the sequential likelihood ratio test at corrected $p \leq 0.05$