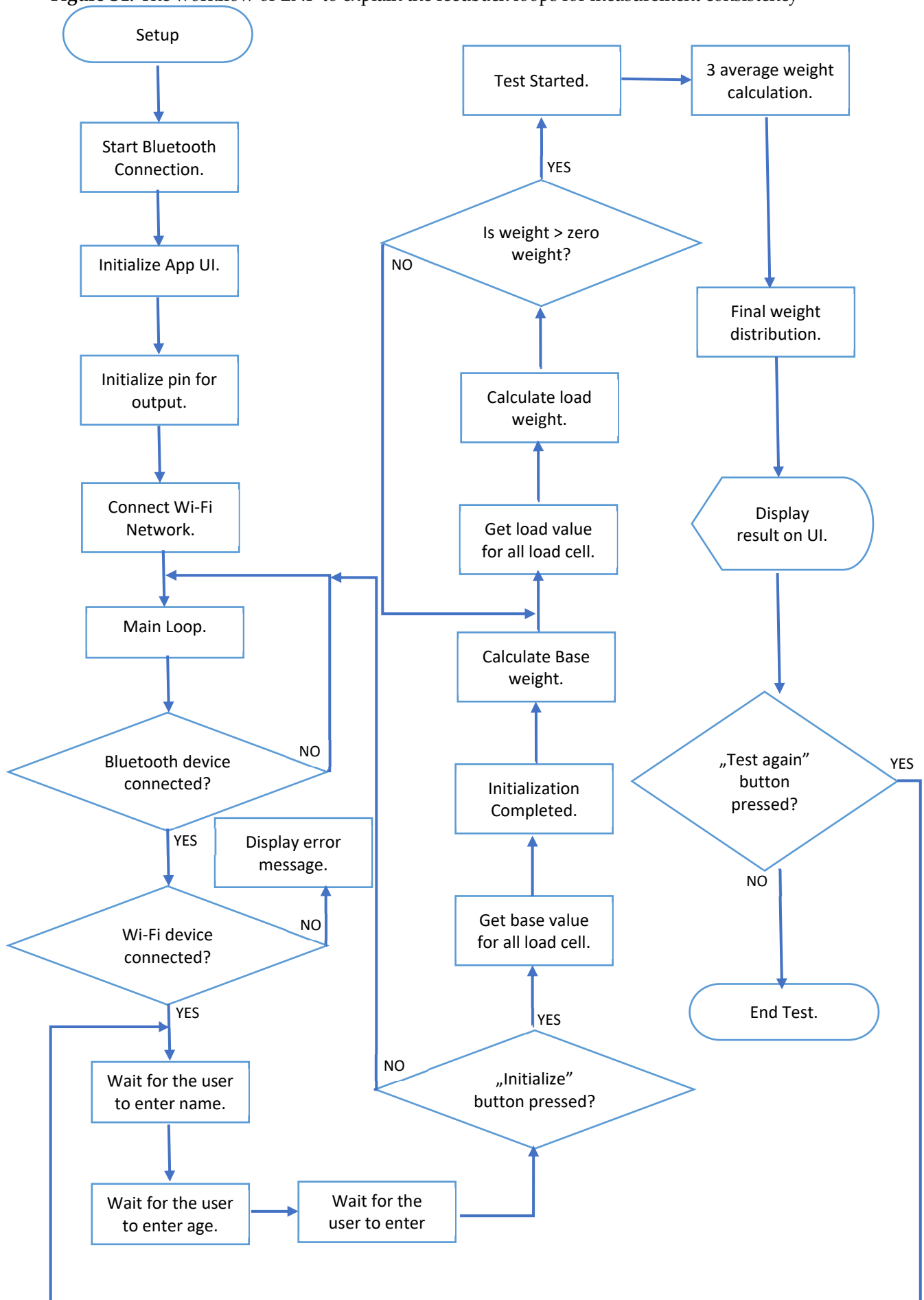
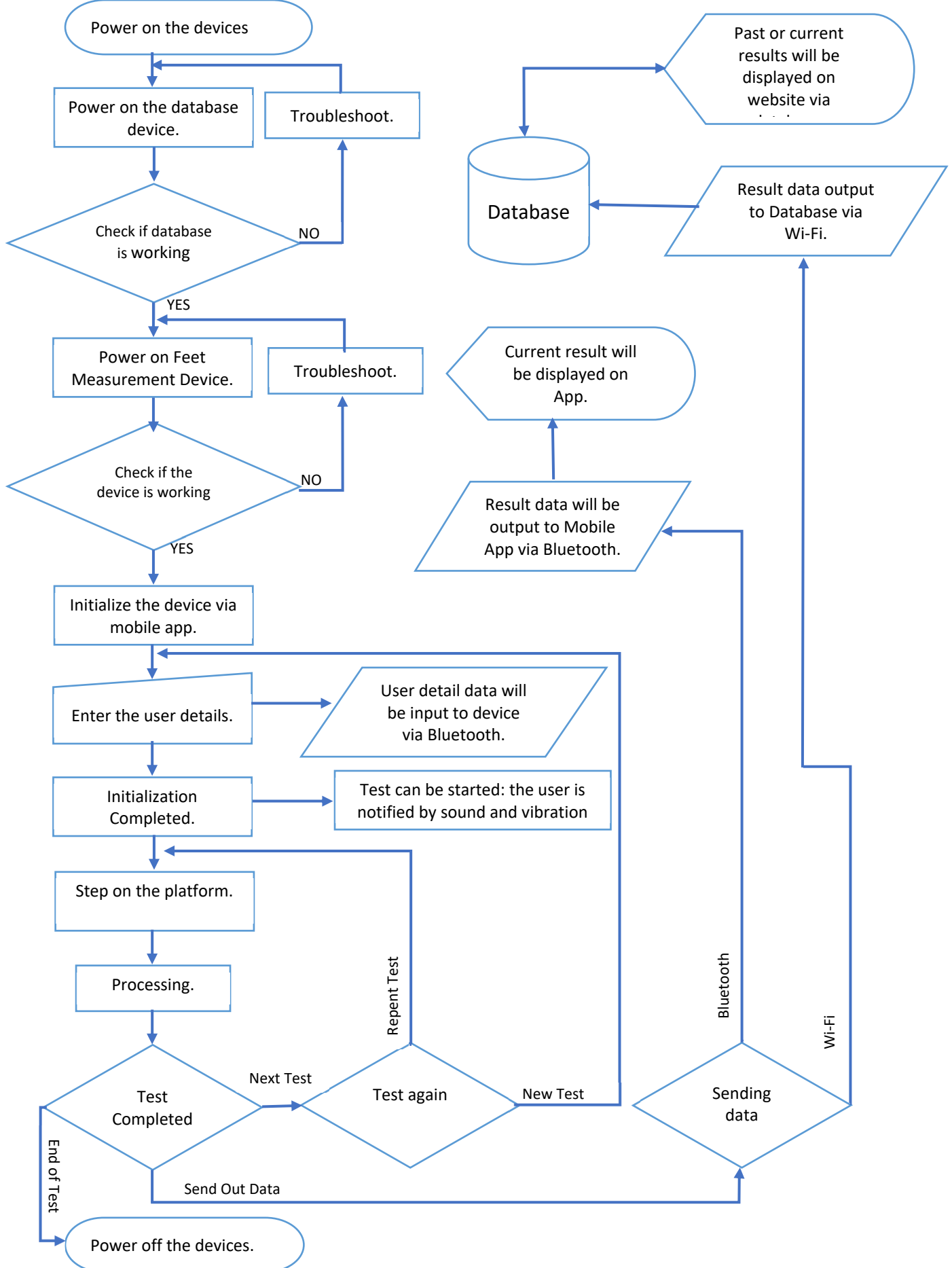


## Supplementary Materials

**Figure S1:** The workflow of ENP to explain the feedback loops for measurement consistency



**Figure S2:** The workflow of ENP to explain the feedback loops to users



**Table S1:** The T-test results to indicate differences between the data acquired with the prototype and the foot scanners.

Test Matscan vs. Prototype	Left	Right	Left forefoot	Left rearfoot	Right forefoot	Right rearfoot
T-Test (test1&2) 2tail type1	7.00E-32	9.96E-31	2.00E-15	5.81E-16	6.60E-12	2.00E-15
T-Test (test1&2) 2tail type2	6.00E-50	1.32E-47	2.00E-23	1.29E-21	1.50E-15	2.02E-23
T-Test (test1&2) 2tail type3	3.00E-47	3.39E-45	5.00E-18	6.32E-19	2.00E-12	7.32E-19
RS FootScan vs. Prototype						
T-Test (test1&2) 2tail type1	3.38E-01	3.36E-01	1.25E-01	3.44E-01	1.15E-11	1.87E-09
T-Test (test1&2) 2tail type2	3.59E-01	3.57E-01	1.77E-01	3.60E-01	4.98E-09	5.62E-07
T-Test (test1&2) 2tail type3	3.59E-01	3.57E-01	1.77E-01	3.60E-01	5.02E-09	5.57E-07