

The Biorad dual color protein ladder was used in all western blot analyses (with the exception of the analysis of total S6RP protein)

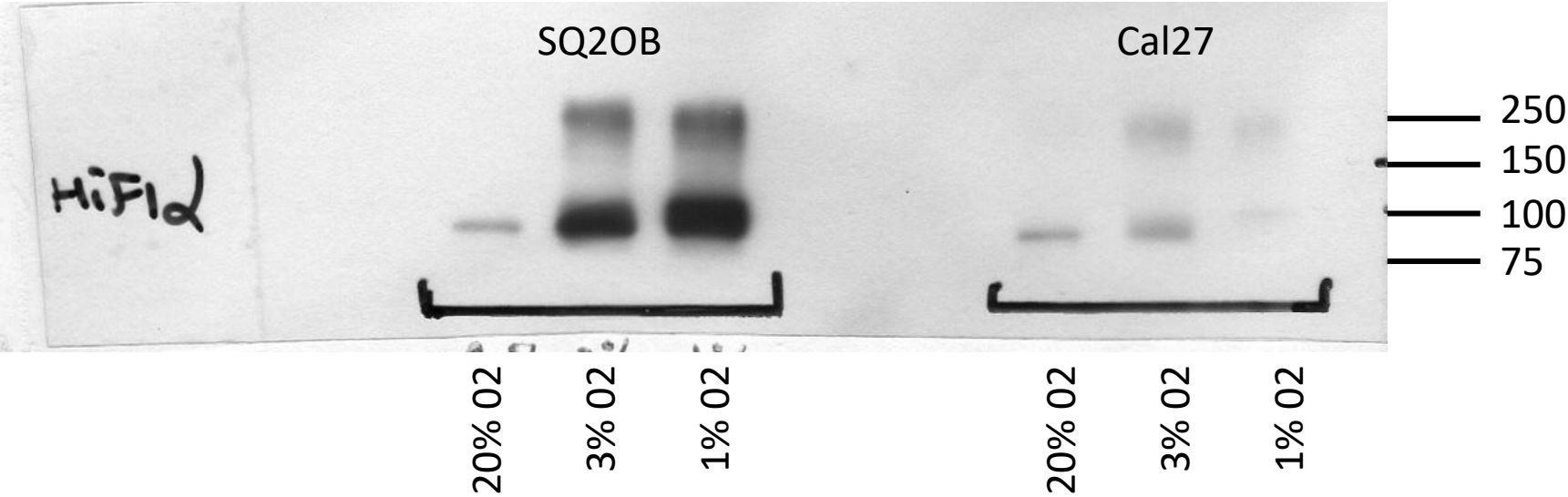
After protein transfer, membranes were cut under the level of the 75 kD band. Upper parts of the membranes (*i.e.* proteins with molecular weight > 75kD) were incubated with the anti-HIF-1 α or anti-HIF-2 α or anti-HIF β antibodies. Lower parts of the membranes (*i.e.* proteins with molecular weight < 75kD) were incubated with anti-actin and anti-pS6RP antibodies.

Above image found at:

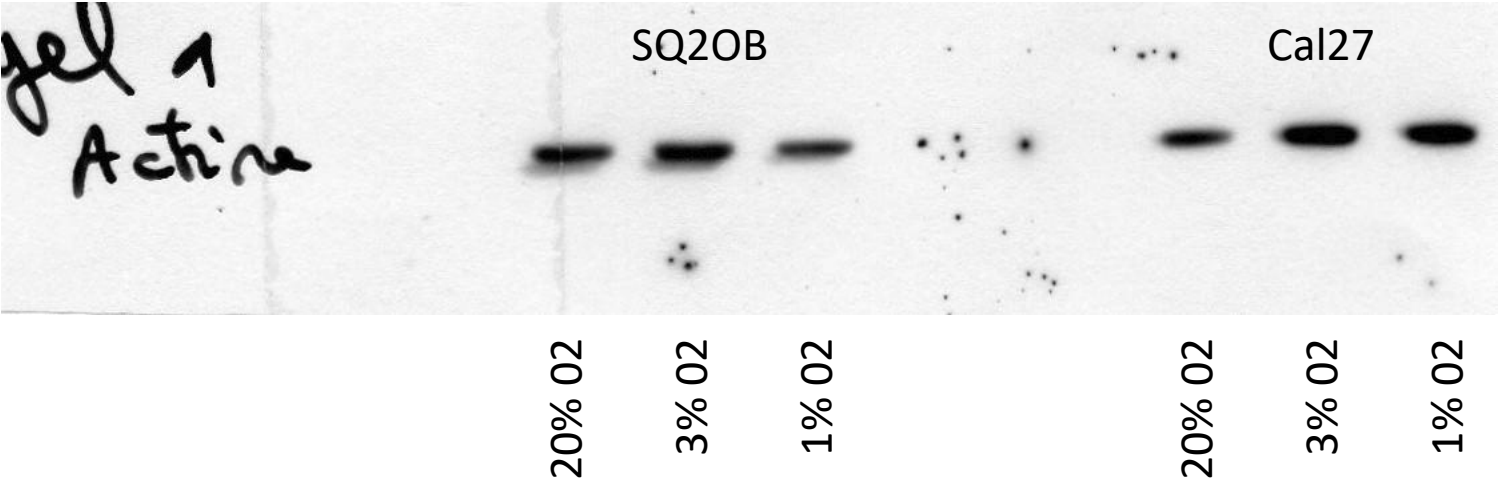
<https://www.labx.com/item/precision-plus-protein-dual-color-standards-500-181/4215091>

Western blots Figure 2C

Blot probed with anti-HIF-1 α antibody



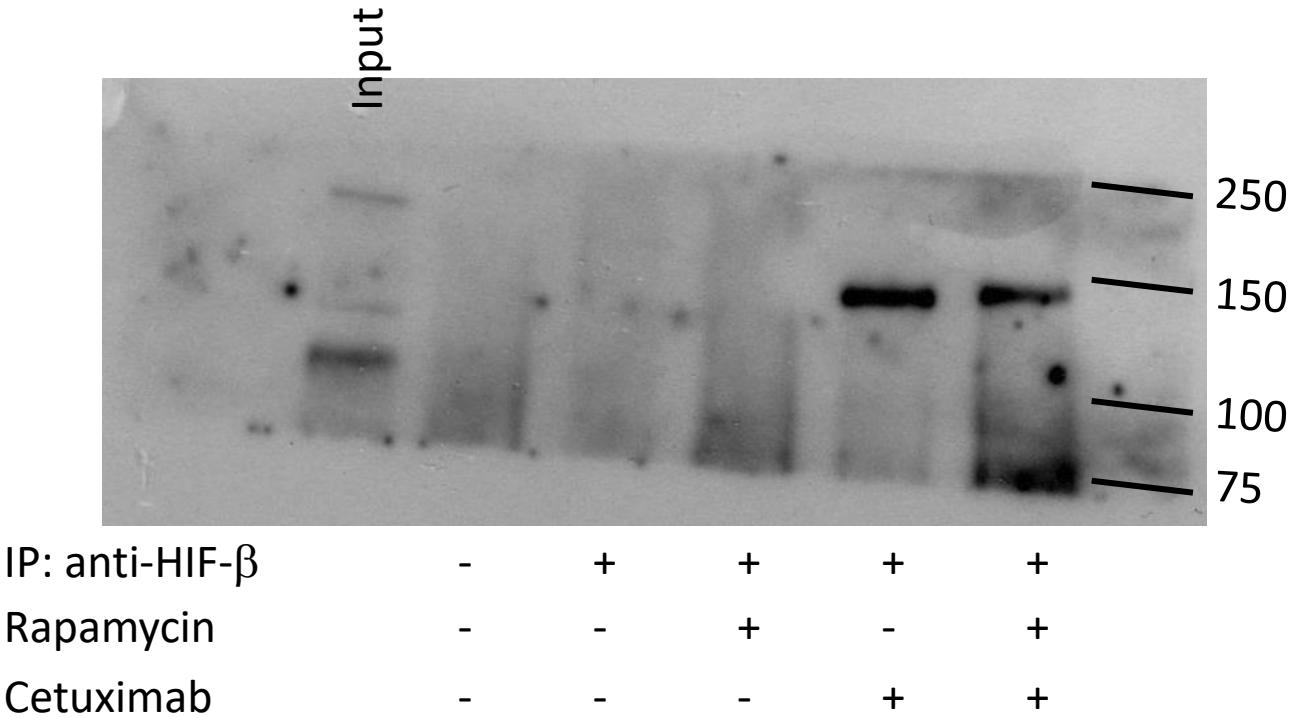
Blot probed with anti-actin antibody



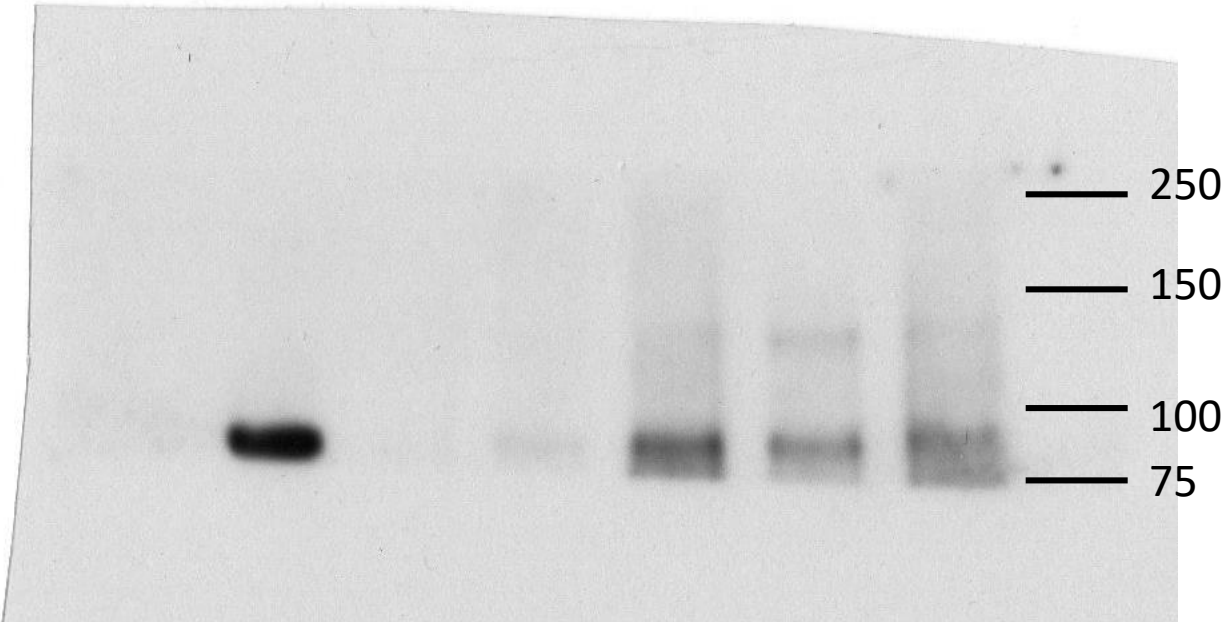
Original blots were cut according to the molecular weight scale and incubated independently with anti-HIF-1 α and anti-actin antibodies

Western blots Figure 3C

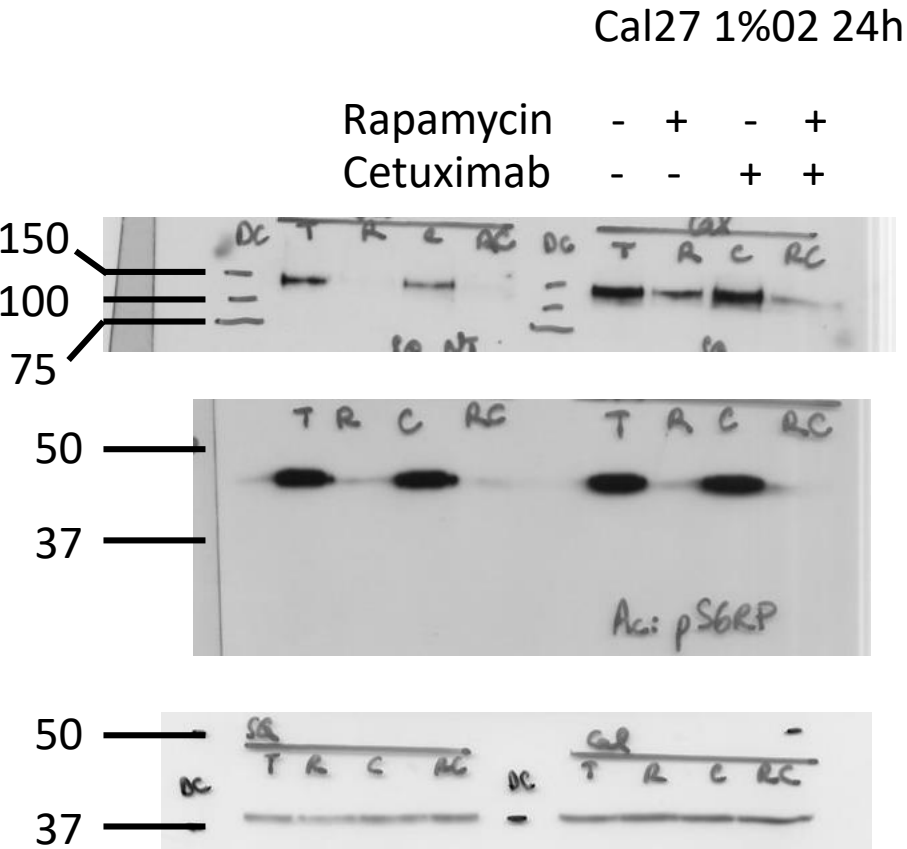
Blot probed with
anti-HIF-2 α antibody



Blot probed with
anti-HIF- β antibody



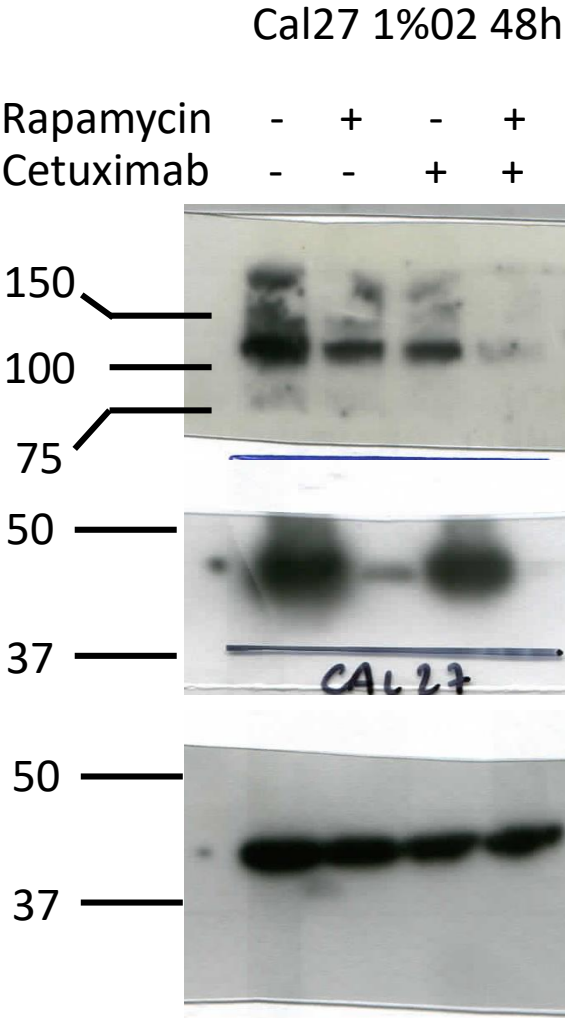
Western blots Figure S1C– Cal27 cell line



Blots probed with
anti-HIF-1α antibody

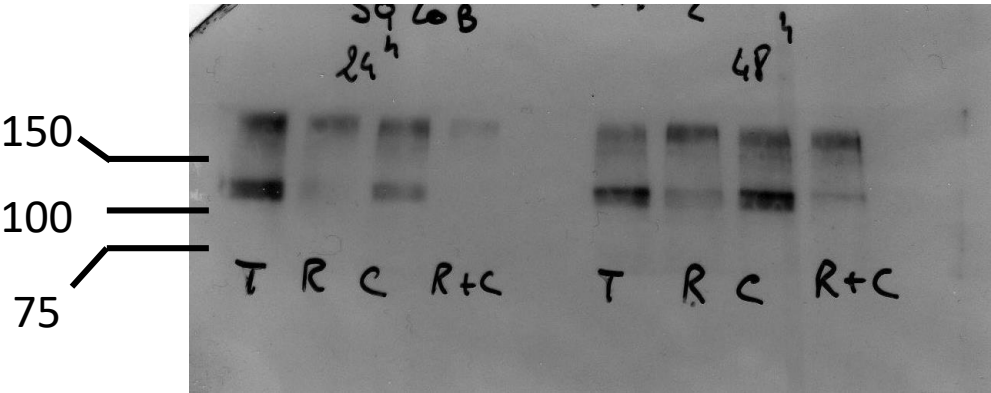
Blots probed with
anti-pS6RP antibody

Blots probed with
anti-actin antibody

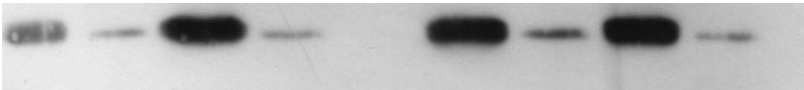


Western blots Figure S1C– SQ20B cell line

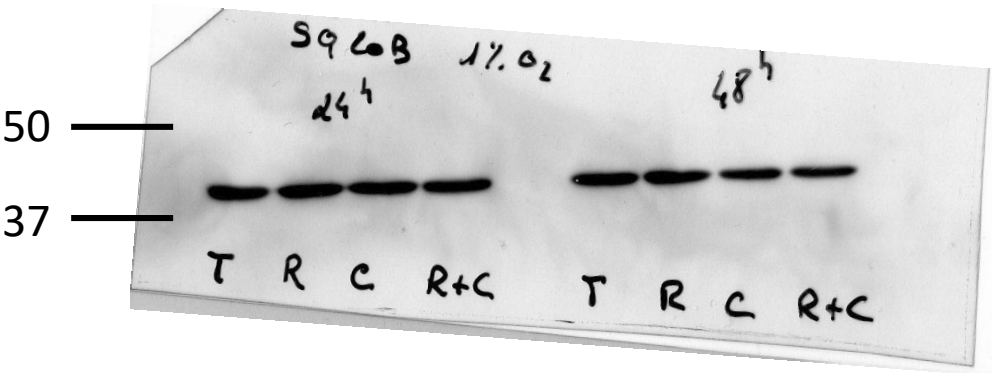
	SQ20B 1%O ₂ 24h				SQ20B 1%O ₂ 48h			
Rapamycin	-	+	-	+	-	+	-	+
Cetuximab	-	-	+	+	-	-	+	+



Blots probed with anti-HIF-1α antibody



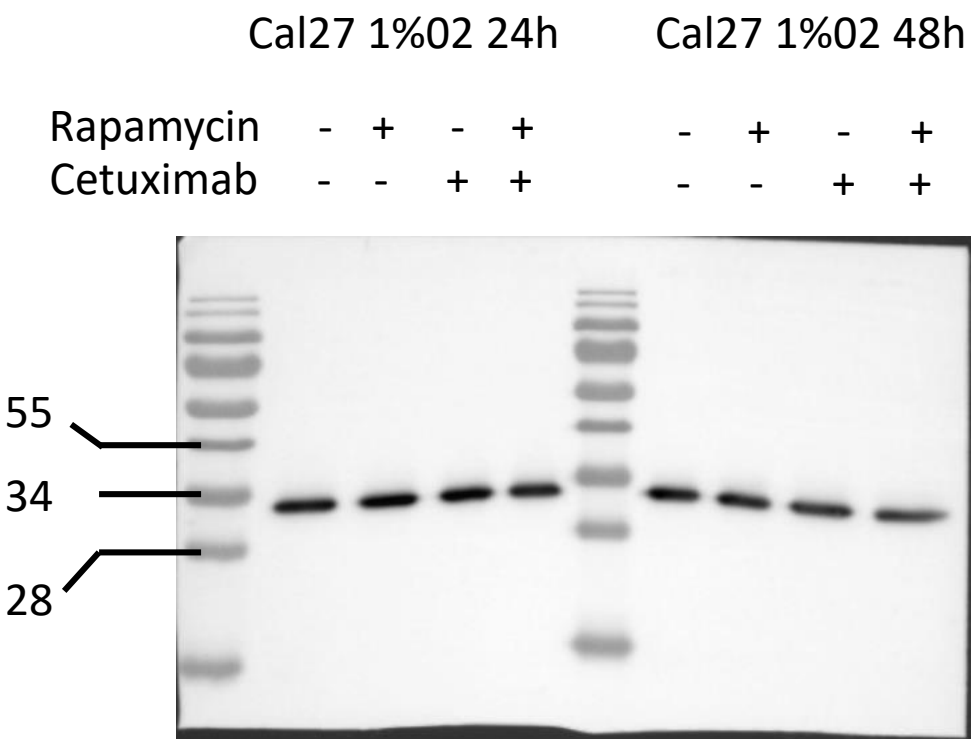
Blots probed with anti-pS6RP antibody



Blots probed with anti-actin antibody

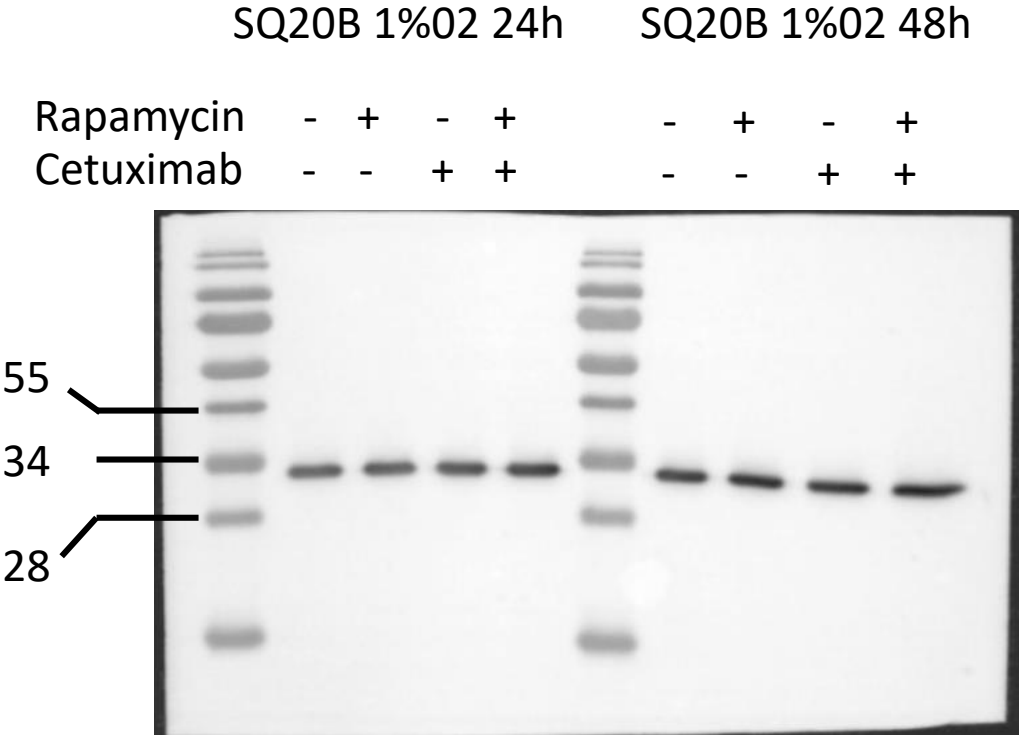
Western blots Figure S1C– Cal27 cell line –S6RP antibody

During the review process, we performed Western blot analyses of whole protein extracts of SQ20B and Cal27 cells by probing membranes with an anti-total S6RP protein. We used the Protein Ladder Prestained (Euromedex) as a molecular weight marker.



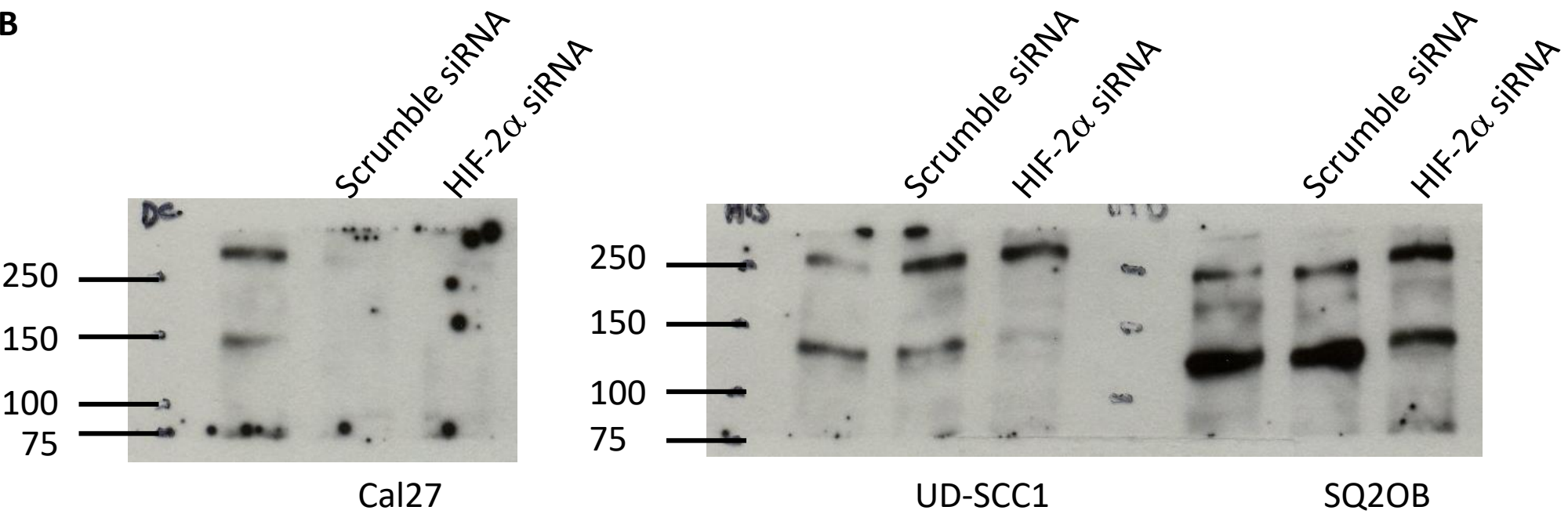
Western blots Figure S1C– SQ20B cell line –S6RP antibody

During the review process, we performed Western blot analyses of whole protein extracts of SQ20B and Cal27 cells by probing membranes with an anti-total S6RP protein. We used the Protein Ladder Prestained (Euromedex) as a molecular weight marker.



Western blots Figure S5B

Blots probed with
anti-HIF-2 α antibody



Blots probed with
anti-actin antibody

