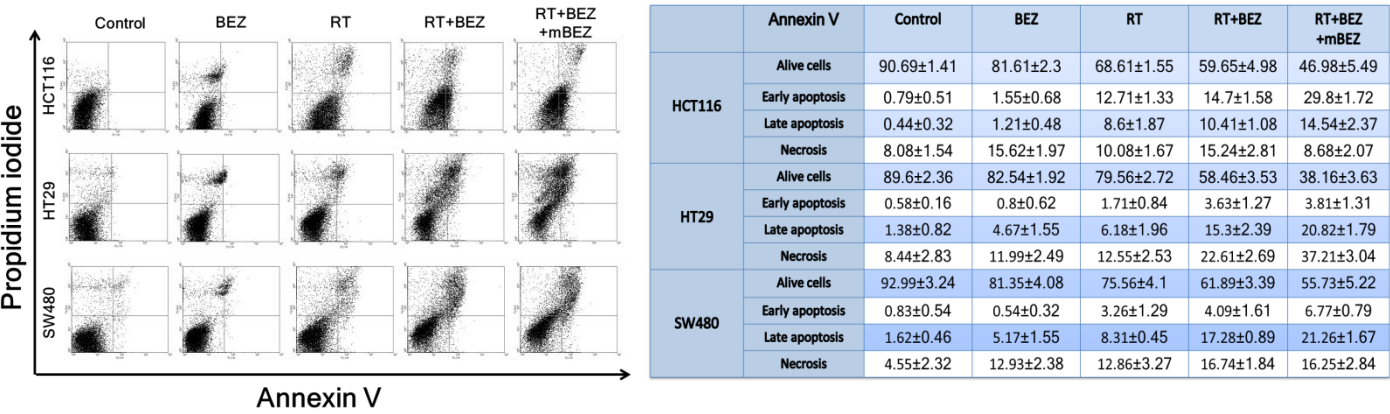
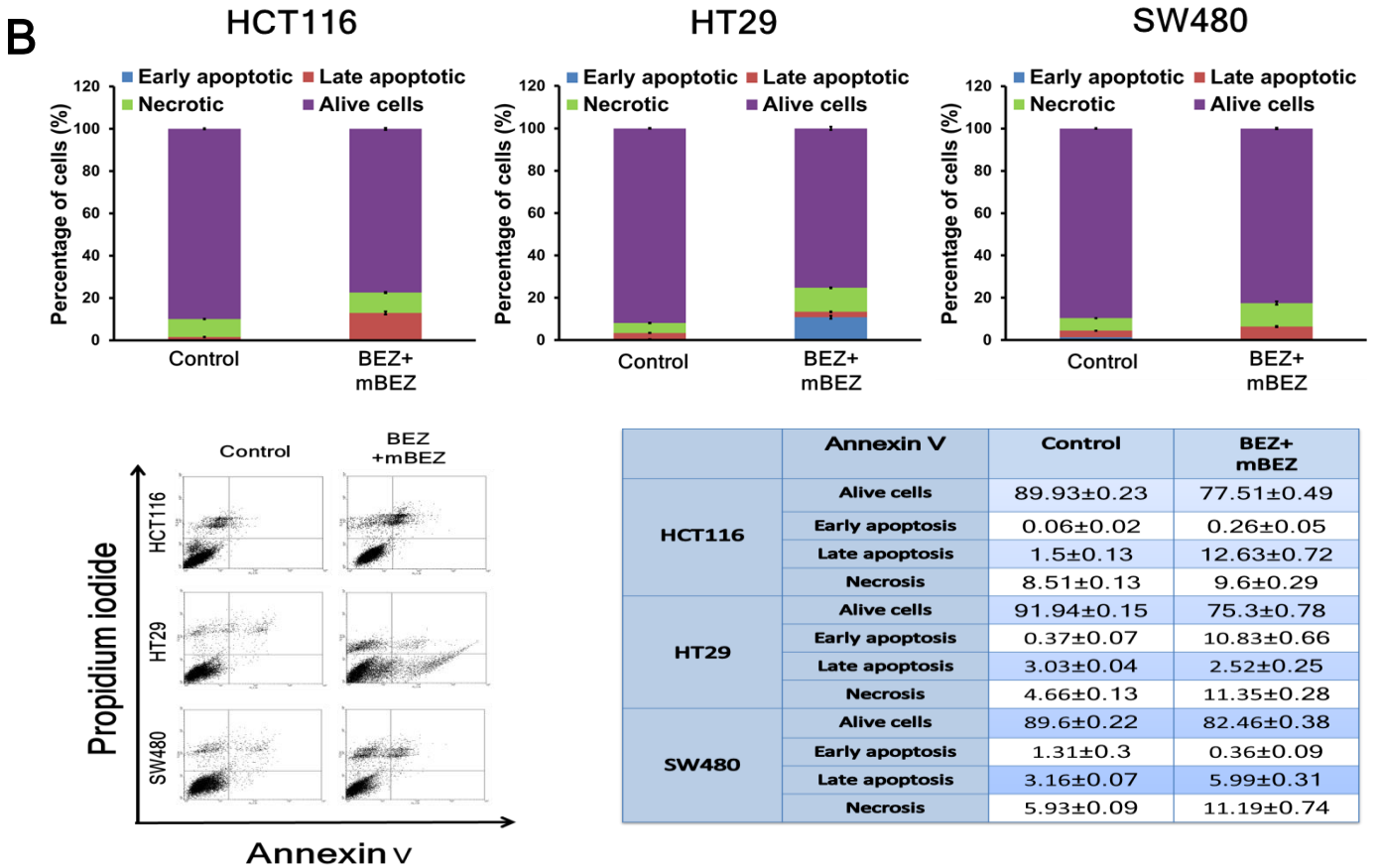


A**B**

Supplementary Figure 2. (A) Flow cytometry apoptosis analysis by annexin V staining of HCT116, HT29, and SW480 cells following control, BEZ235 (BEZ), RT, RT+BEZ, and RT+BEZ+mBEZ treatments. Summary of the annexin V-FITC apoptosis assay results showing the percentages of early apoptotic, late apoptotic, necrotic, and living cells. The results are expressed as the mean \pm SE of three experiments from each of the three CRC cell lines. Annexin V staining revealed that RT+BEZ+mBEZ treatment resulted in more predominant apoptosis than BEZ, RT, RT+BEZ, and control treatments. (B) Flow cytometry apoptosis analysis by annexin V staining of HCT116, HT29, and SW480 cells following control and BEZ+mBEZ treatments. Annexin V staining revealed that BEZ+mBEZ treatment resulted in more predominant apoptosis than control treatments.