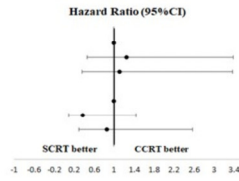


### A. Local regional recurrence-free survival

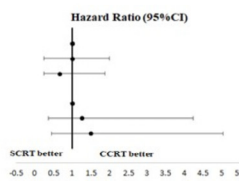
#### A. Subgroup-Age

HR (95%CI)	
1	CCRT
1.25 (0.46-3.39)	SCRT1
1.11 (0.36-3.38)	SCRT2
1	CCRT
0.37 (0.09-1.44)	SCRT1
0.86 (0.29-2.57)	SCRT2



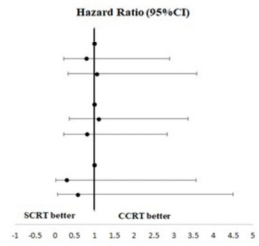
#### B. Subgroup-Sex

HR (95%CI)	
1	CCRT
0.70 (0.24-1.99)	SCRT1
0.67 (0.24-1.87)	SCRT2
1	CCRT
1.25 (0.37-4.23)	SCRT1
1.50 (0.45-5.03)	SCRT2



#### C. Subgroup-Tumor size

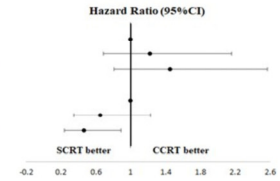
HR (95%CI)	
1	CCRT
0.79 (0.22-2.89)	SCRT1
1.06 (0.33-3.58)	SCRT2
1	CCRT
1.10 (0.36-3.36)	SCRT1
0.81 (0.23-2.83)	SCRT2
1	CCRT
0.29 (0.02-3.56)	SCRT1
0.58 (0.07-4.50)	SCRT2



### B. Distant metastasis-free survival

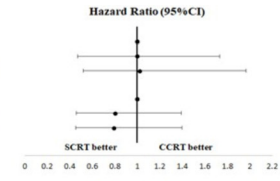
#### A. Subgroup-Age

HR (95%CI)	
1	CCRT
1.22 (0.69-2.16)	SCRT1
1.45 (0.81-2.57)	SCRT2
1	CCRT
0.65 (0.35-1.23)	SCRT1
0.46 (0.24-0.89)	SCRT2



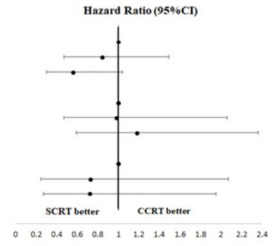
#### B. Subgroup-Sex

HR (95%CI)	
1	CCRT
0.90 (0.47-1.73)	SCRT1
1.02 (0.52-1.97)	SCRT2
1	CCRT
0.80 (0.46-1.39)	SCRT1
0.79 (0.45-1.40)	SCRT2



#### C. Subgroup-Tumor size

HR (95%CI)	
1	CCRT
0.84 (0.47-1.49)	SCRT1
0.56 (0.30-1.04)	SCRT2
1	CCRT
0.98 (0.47-2.06)	SCRT1
1.18 (0.59-2.36)	SCRT2
1	CCRT
0.73 (0.25-2.07)	SCRT1
0.72 (0.27-1.95)	SCRT2



**Supplementary Figure S1:** Forest plots of aHRs showing the effect of PORT timing on (A) local regional recurrence-free survival, and (B) distant metastasis-free survival. The 95% CIs are also shown. *Abbreviations:* aHR: adjusted hazard ratio; CCRT: concurrent chemoradiation; PORT: postoperative radiotherapy; SCRT: sequential chemoradiation; CIs: confidence intervals.