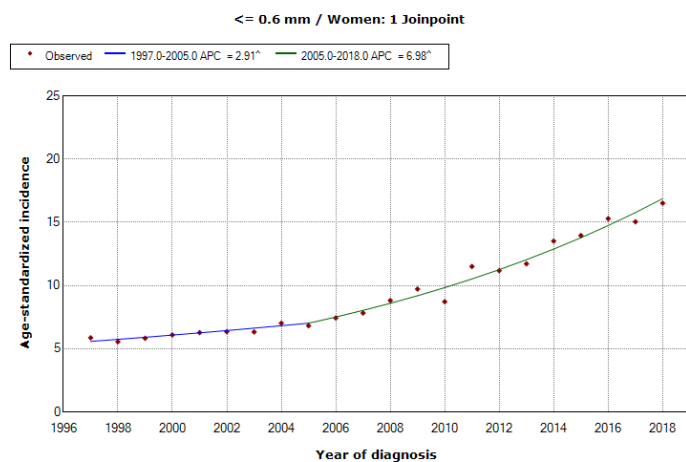
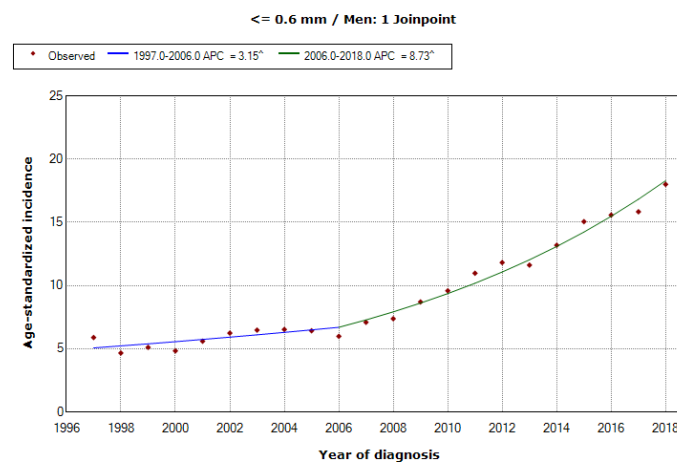


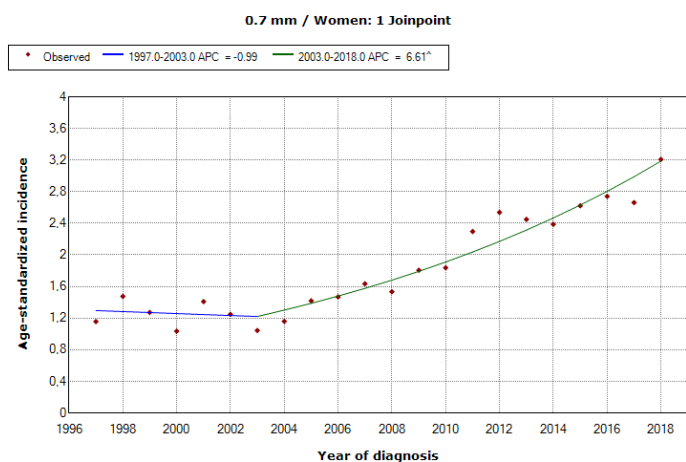
Figure S1. Trends in annual percentage change (APC) in age-standardized incidence rates for *in situ* and invasive cutaneous melanoma by tumour thickness and sex, in Sweden 1997-2018.



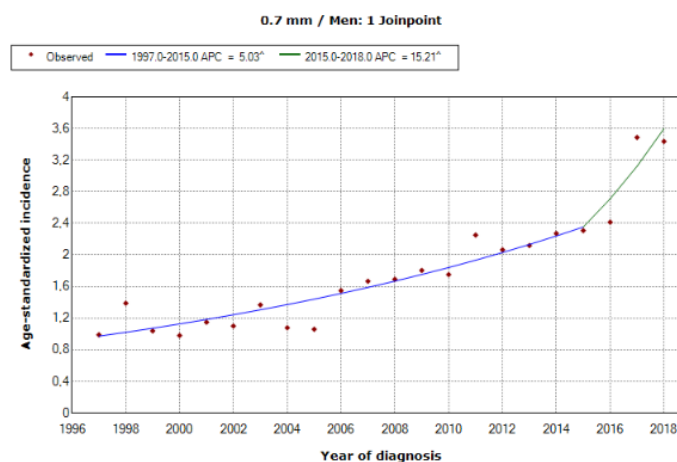
[^] Indicates that the Annual Percent Change (APC) is significantly different from zero at the alpha = 0.05 level.
Final Selected Model: 1 Joinpoint.



[^] Indicates that the Annual Percent Change (APC) is significantly different from zero at the alpha = 0.05 level.
Final Selected Model: 1 Joinpoint.

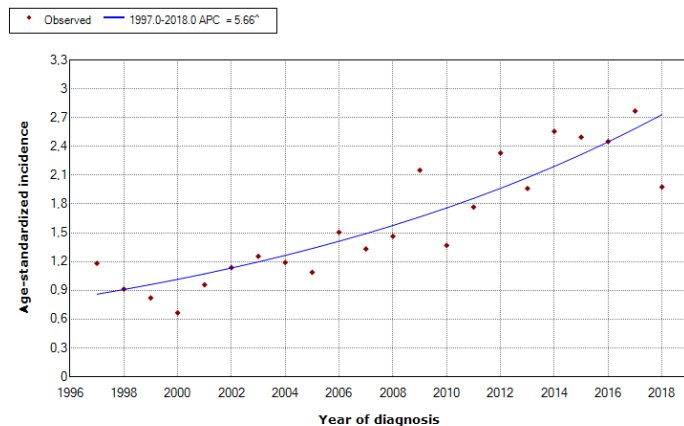


[^] Indicates that the Annual Percent Change (APC) is significantly different from zero at the alpha = 0.05 level.
Final Selected Model: 1 Joinpoint.



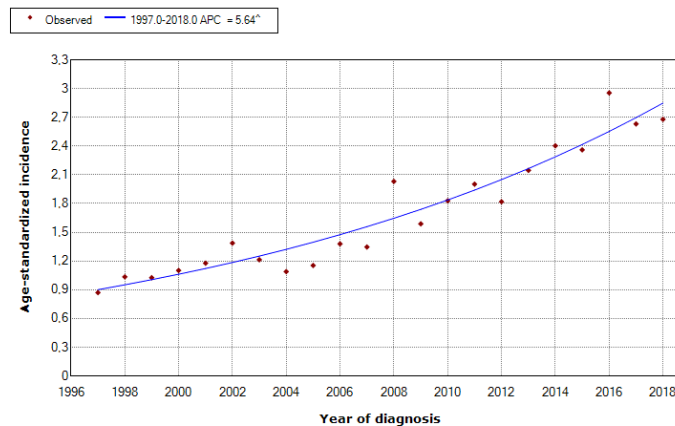
[^] Indicates that the Annual Percent Change (APC) is significantly different from zero at the alpha = 0.05 level.
Final Selected Model: 1 Joinpoint.

0.8 mm / Women: 0 Joinpoints



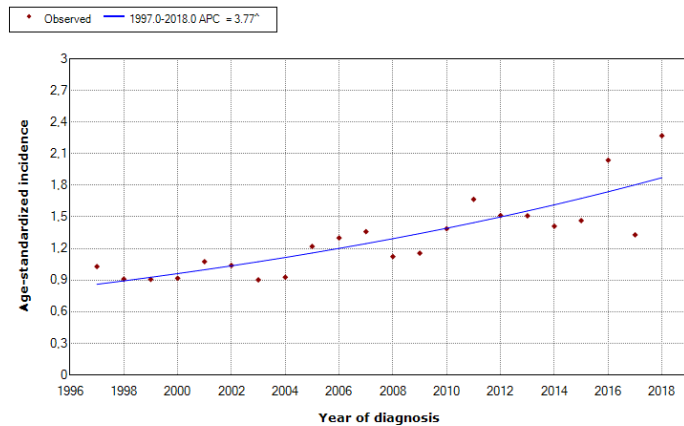
[^] Indicates that the Annual Percent Change (APC) is significantly different from zero at the alpha = 0.05 level.
Final Selected Model: 0 Joinpoints.

0.8 mm / Men: 0 Joinpoints



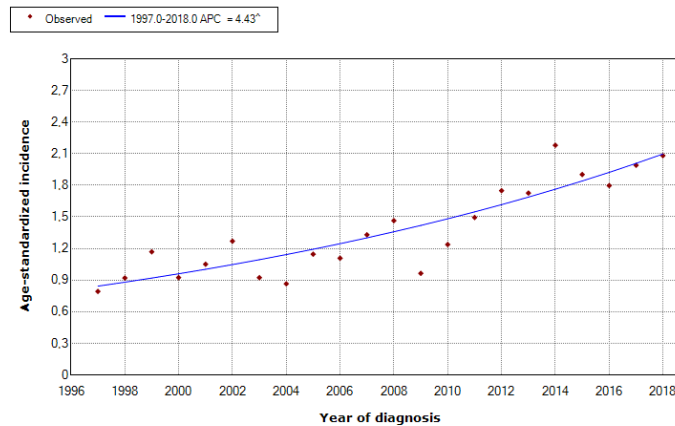
[^] Indicates that the Annual Percent Change (APC) is significantly different from zero at the alpha = 0.05 level.
Final Selected Model: 0 Joinpoints.

0.9 mm / Women: 0 Joinpoints



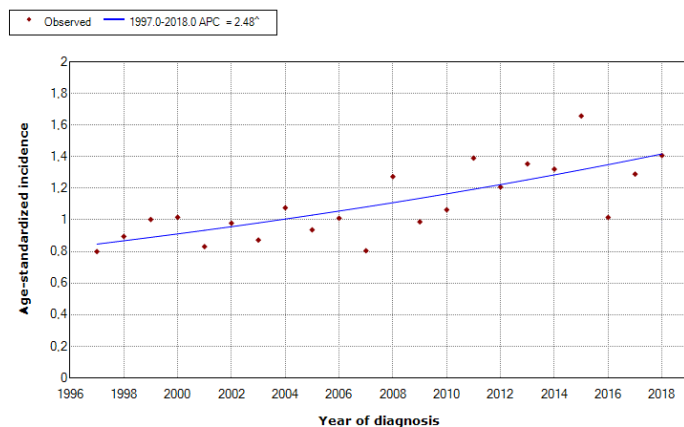
[^] Indicates that the Annual Percent Change (APC) is significantly different from zero at the alpha = 0.05 level.
Final Selected Model: 0 Joinpoints.

0.9 mm / Men: 0 Joinpoints



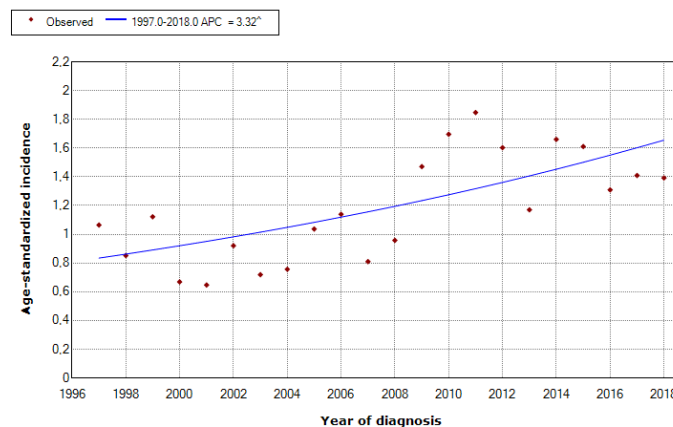
[^] Indicates that the Annual Percent Change (APC) is significantly different from zero at the alpha = 0.05 level.
Final Selected Model: 0 Joinpoints.

1.0 mm / Women: 0 Joinpoints



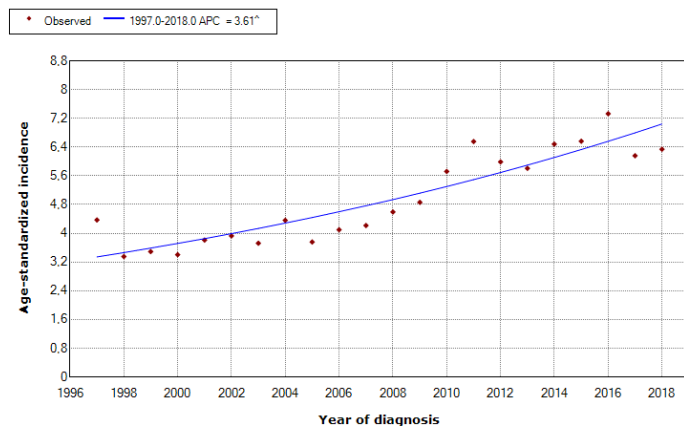
^ Indicates that the Annual Percent Change (APC) is significantly different from zero at the alpha = 0.05 level.
Final Selected Model: 0 Joinpoints.

1.0 mm / Men: 0 Joinpoints



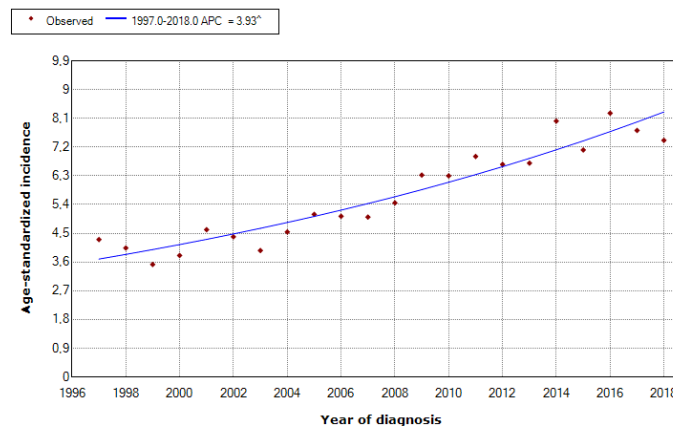
^ Indicates that the Annual Percent Change (APC) is significantly different from zero at the alpha = 0.05 level.
Final Selected Model: 0 Joinpoints.

1.1-2.0 mm / Women: 0 Joinpoints



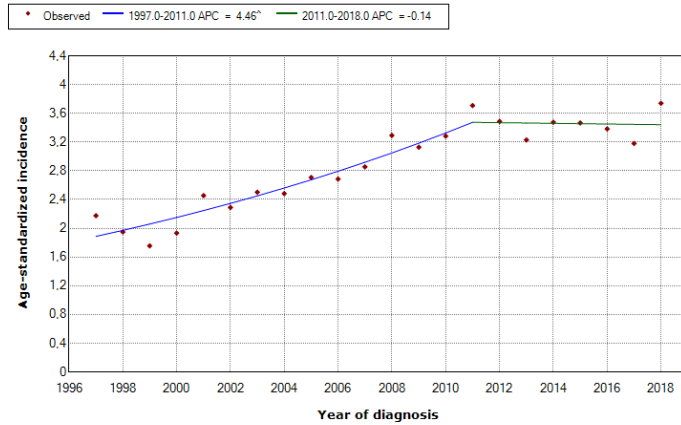
^ Indicates that the Annual Percent Change (APC) is significantly different from zero at the alpha = 0.05 level.
Final Selected Model: 0 Joinpoints.

1.1-2.0 mm / Men: 0 Joinpoints



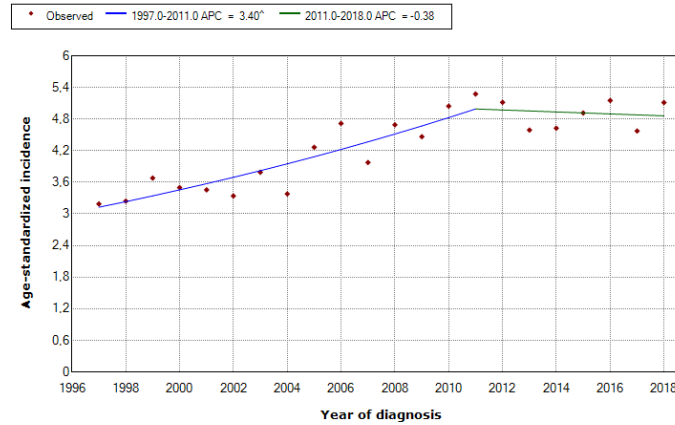
^ Indicates that the Annual Percent Change (APC) is significantly different from zero at the alpha = 0.05 level.
Final Selected Model: 0 Joinpoints.

2.1-4.0 mm / Women: 1 Joinpoint



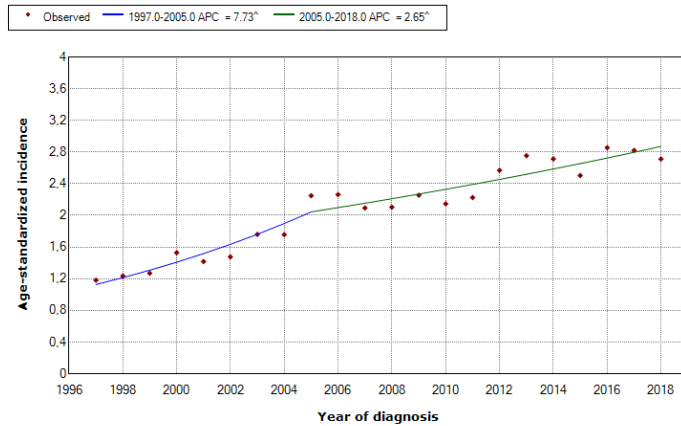
[^] Indicates that the Annual Percent Change (APC) is significantly different from zero at the alpha = 0.05 level.
Final Selected Model: 1 Joinpoint.

2.1-4.0 mm / Men: 1 Joinpoint



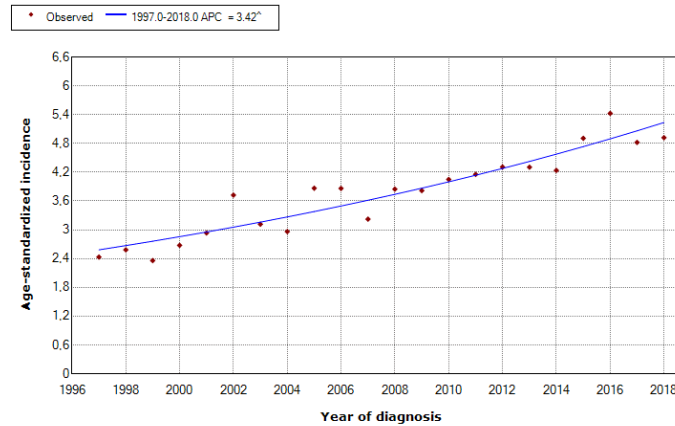
[^] Indicates that the Annual Percent Change (APC) is significantly different from zero at the alpha = 0.05 level.
Final Selected Model: 1 Joinpoint.

> 4.0 mm / Women: 1 Joinpoint



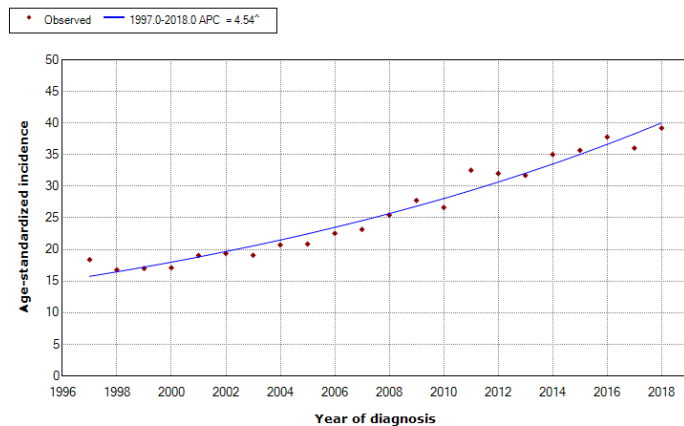
[^] Indicates that the Annual Percent Change (APC) is significantly different from zero at the alpha = 0.05 level.
Final Selected Model: 1 Joinpoint.

> 4.0 mm / Men: 0 Joinpoints



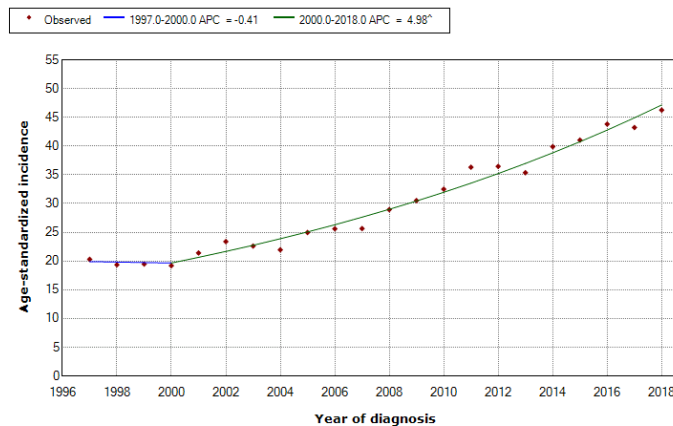
[^] Indicates that the Annual Percent Change (APC) is significantly different from zero at the alpha = 0.05 level.
Final Selected Model: 0 Joinpoints.

All / Women: 0 Joinpoints



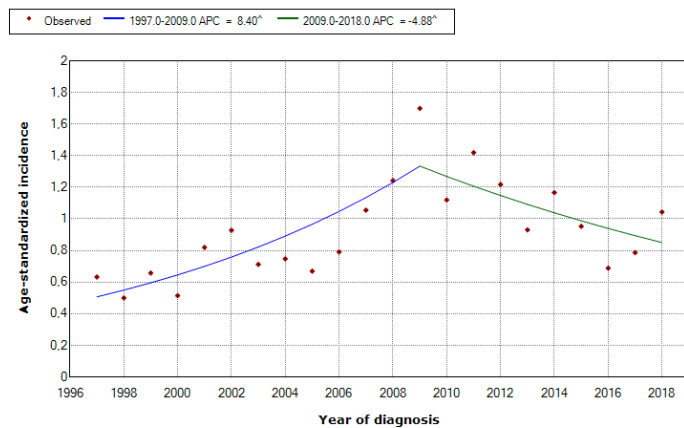
^{*} Indicates that the Annual Percent Change (APC) is significantly different from zero at the alpha = 0.05 level.
Final Selected Model: 0 Joinpoints.

All / Men: 1 Joinpoint



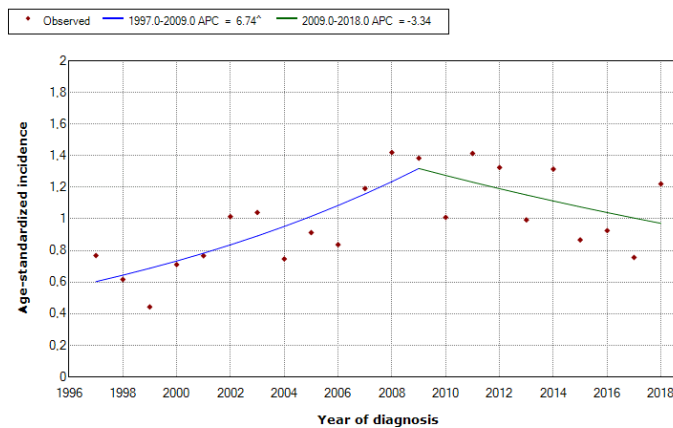
^{*} Indicates that the Annual Percent Change (APC) is significantly different from zero at the alpha = 0.05 level.
Final Selected Model: 1 Joinpoint.

Missing / Women: 1 Joinpoint



^{*} Indicates that the Annual Percent Change (APC) is significantly different from zero at the alpha = 0.05 level.
Final Selected Model: 1 Joinpoint.

Missing / Men: 1 Joinpoint



^{*} Indicates that the Annual Percent Change (APC) is significantly different from zero at the alpha = 0.05 level.
Final Selected Model: 1 Joinpoint.