

Supplementary Materials

Oncofetal Chondroitin Sulfate Is a Highly Expressed Therapeutic Target in Non-Small Cell Lung Cancer

Htoo Zarni Oo, Zoltan Lohinai, Nastaran Khazamipour, Joey Lo, Gunjan Kumar, Jessica Pihl, Hans Adomat, Noushin Nabavi, Hakhamanesh Behmanesh, Beibei Zhai, Robert Dagil, Swati Choudhary, Tobias Gustavsson, Thomas M. Clausen, Jeffrey D. Esko, Jeffrey W. Allen, Michael A. Thompson, Nhan L. Tran, Judit Moldvay, Balazs Dome, Ali Salanti, Nader Al-Nakouzi, Glen J. Weiss and Mads Daugaard

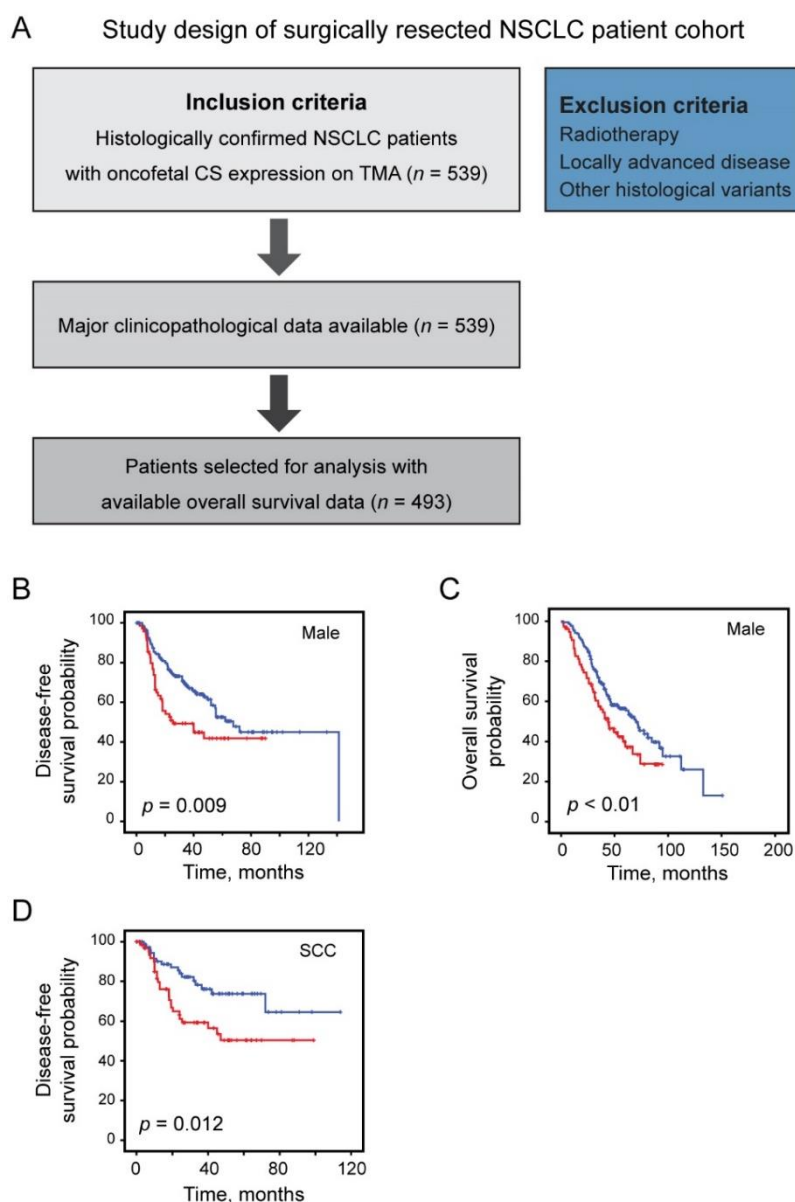


Figure S1. Study design and patient outcome of surgically resected NSCLC cohort. **(A)** Study design of surgically resected NSCLC patient cohort; **(B)** survival estimates of DFS in men; **(C)** OS in men and **(D)** DFS in squamous cell carcinoma (SCC) histology. Red color bar: high oncofetal CS expression; blue: low expression. Abbreviations: NSCLC: non-small cell lung cancer; CS: chondroitin sulfate; TMA: tissue microarray.

Table S1. Relationship between oncofetal CS expression and EGFR/KRAS mutation status.

Mutation Status	Oncofetal CS Expression		<i>p</i> -Value
	High	Low	
KRAS mut and EGFR wt	14 (20%)	55	0.0165
EGFR mut and KRAS wt	3 (8%)	36	
EGFR and KRAS wt	57 (28%)	145	

Abbreviations: mut: mutant; wt: wild type; KRAS: KRAS Proto-Oncogene; EGFR: Epidermal Growth Factor Receptor; *p*-value was calculated by the Chi-square test.



© 2021 by the authors. Licensee MDPI, Basel, Switzerland. This article is an open access article distributed under the terms and conditions of the Creative Commons Attribution (CC BY) license (<http://creativecommons.org/licenses/by/4.0/>).