

Article

The Expression Profiles and Deregulation of UDP-Glycosyl-transferase (*UGT*) Genes in Human Cancers and Their Association with Clinical Outcomes

Dong Gui Hu ^{1,*}, Shashikanth Marri ², Peter I. Mackenzie ¹, Julie-Ann Hulin ¹, Ross A McKinnon ¹ and Robyn Meech ¹

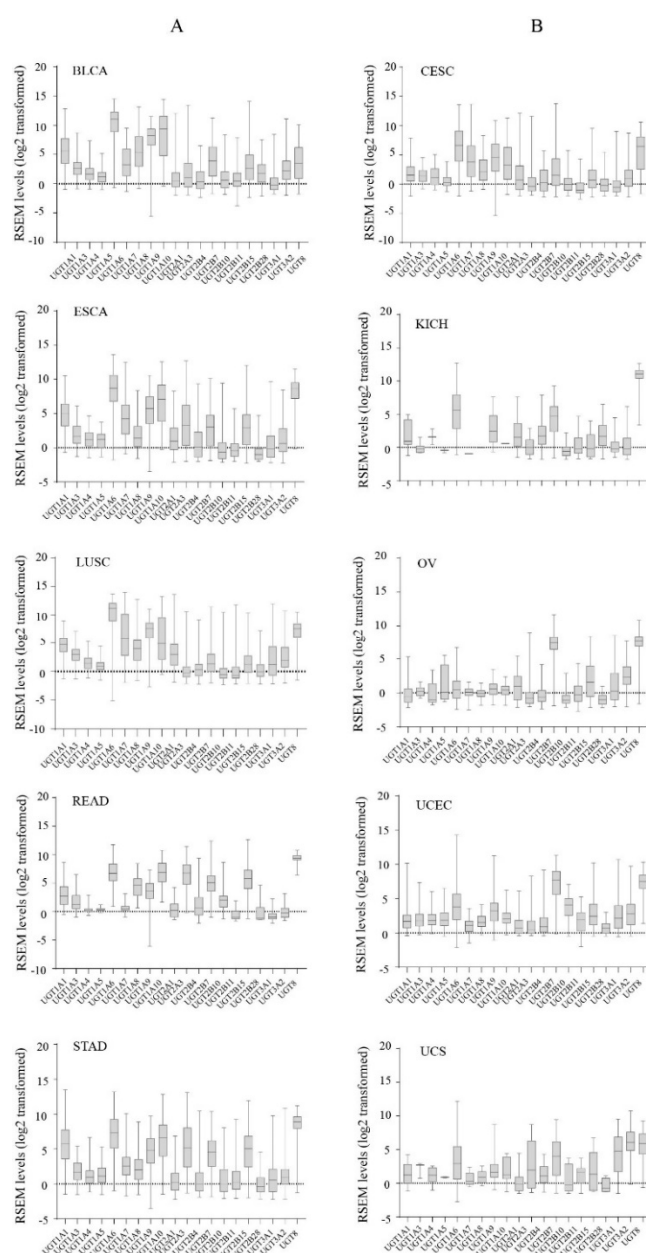
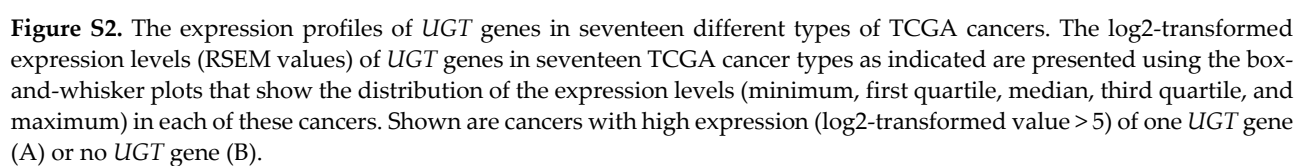


Figure S1. The expression profiles of *UGT* genes in ten different types of TCGA cancers. The log₂-transformed expression levels (RSEM values) of *UGT* genes in ten TCGA cancer types as indicated are presented using the box-and-whisker plots that show the distribution of the expression levels (minimum, first quartile, median, third quartile, and maximum) in each of these cancers. Shown are cancers with high expression (log₂-transformed value > 5) of 3-5 *UGT* genes (A) or 2 *UGT* genes (B).



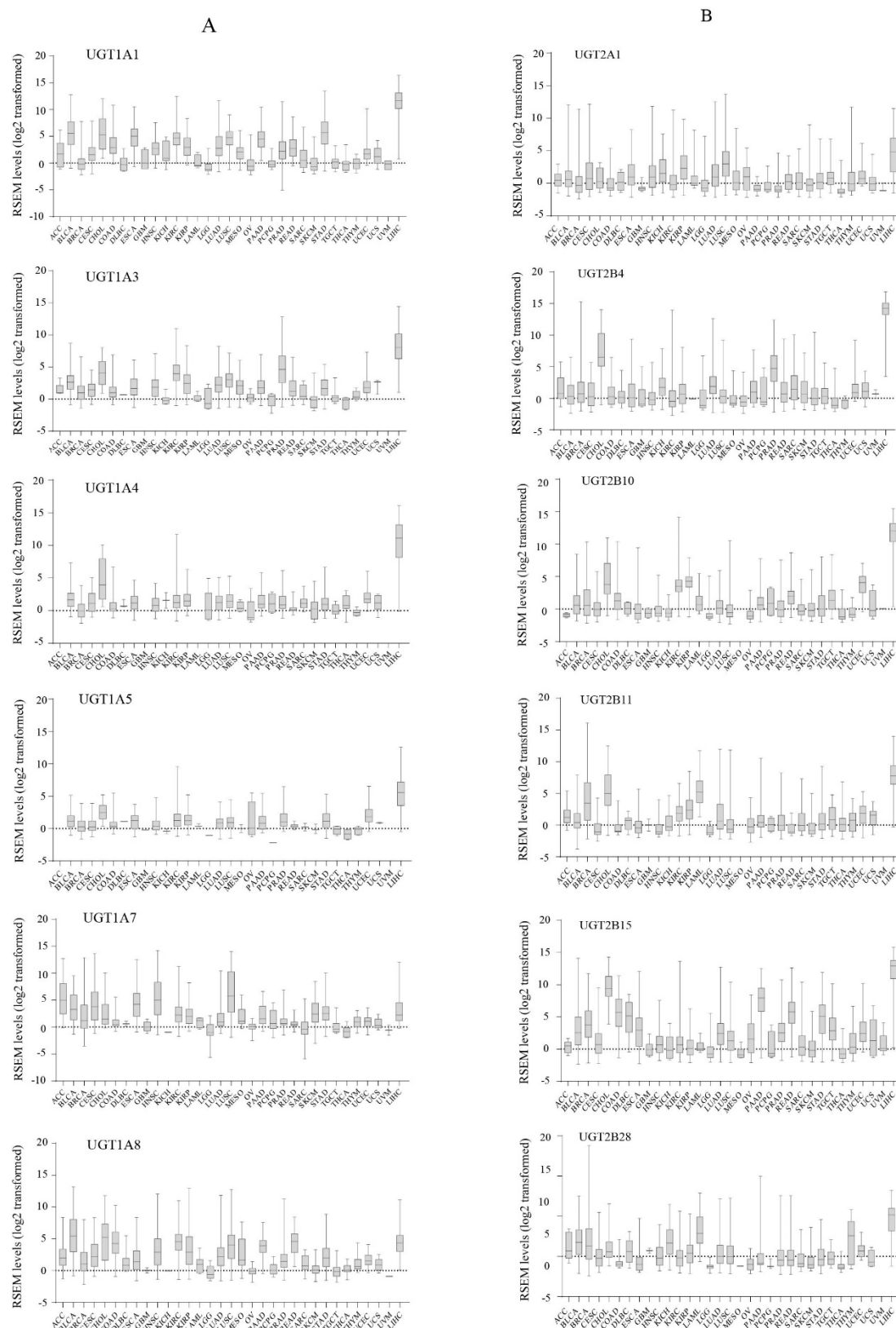


Figure S3. The expression profiles of 12 *UGT* genes in 33 different types of TCGA cancers. The log₂-transformed expression levels (RSEM values) of six *UGT1A* (A) and six *UGT2B* (B) genes in 33 TCGA cancer types as indicated are presented using the box-and-whisker plots that show the distribution of the expression levels (minimum, first quartile, median, third quartile, and maximum) in each of these cancers.

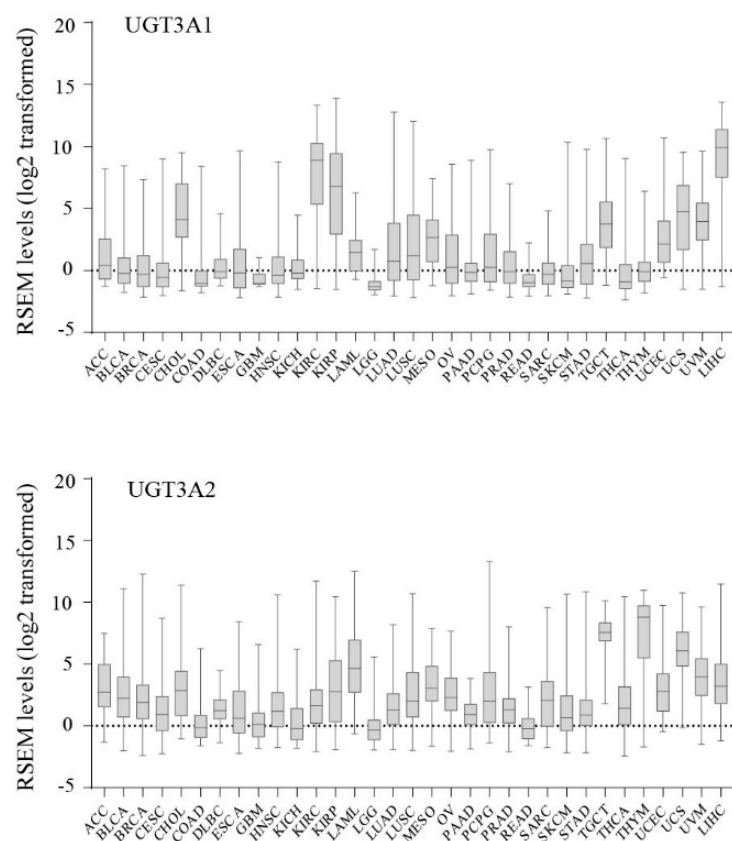


Figure S4. The expression profiles of *UGT3A* genes in 33 different types of TCGA cancers. The log2-transformed expression levels (RSEM values) of *UGT3A1* and *UGT3A2* genes in 33 TCGA cancer types as indicated are presented using the box-and-whisker plots that show the distribution of the expression levels (minimum, first quartile, median, third quartile, and maximum) in each of these cancers.

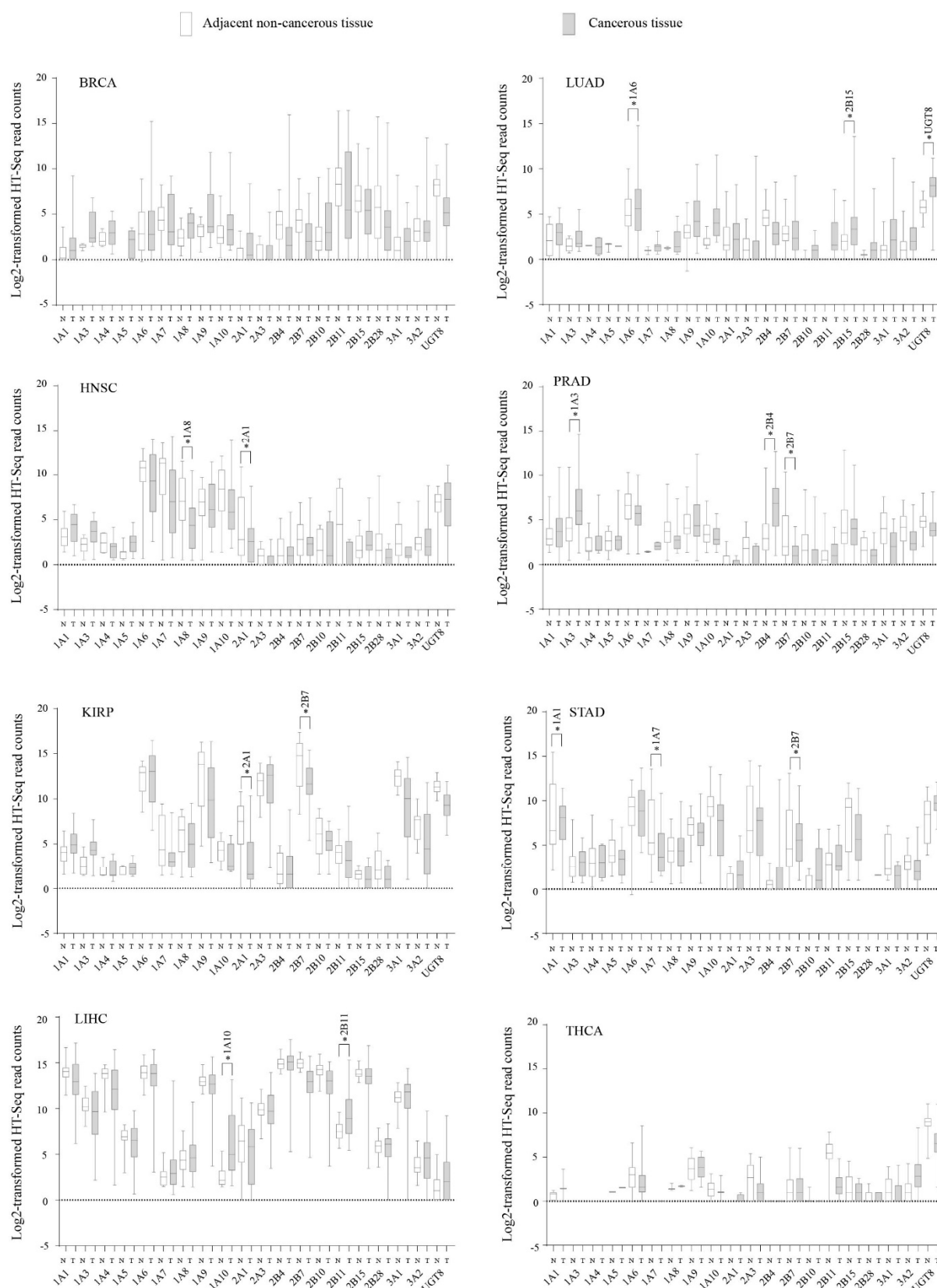


Figure S5. Expression of *UGT* genes in matched cancerous (T) and adjacent non-cancerous (N) tissues in eight different TCGA cancers types. The log2-transformed expression levels (HT-Seq values) of *UGT* genes in matched cancerous (T) and adjacent non-cancerous (N) tissues from eight TCGA cancer types (BRCA, HNSC, KIRP, LIHC, LUAD, PRAD, STAD, THCA) as indicated are presented using the box-and-whisker plots that show the distribution of the expression levels (minimum, first quartile, median, third quartile, and maximum) in each of these cancers. Up/downregulated *UGT* genes are highlighted with * indicating a Benjamini-Hochberg-adjusted p value of < 0.01. .