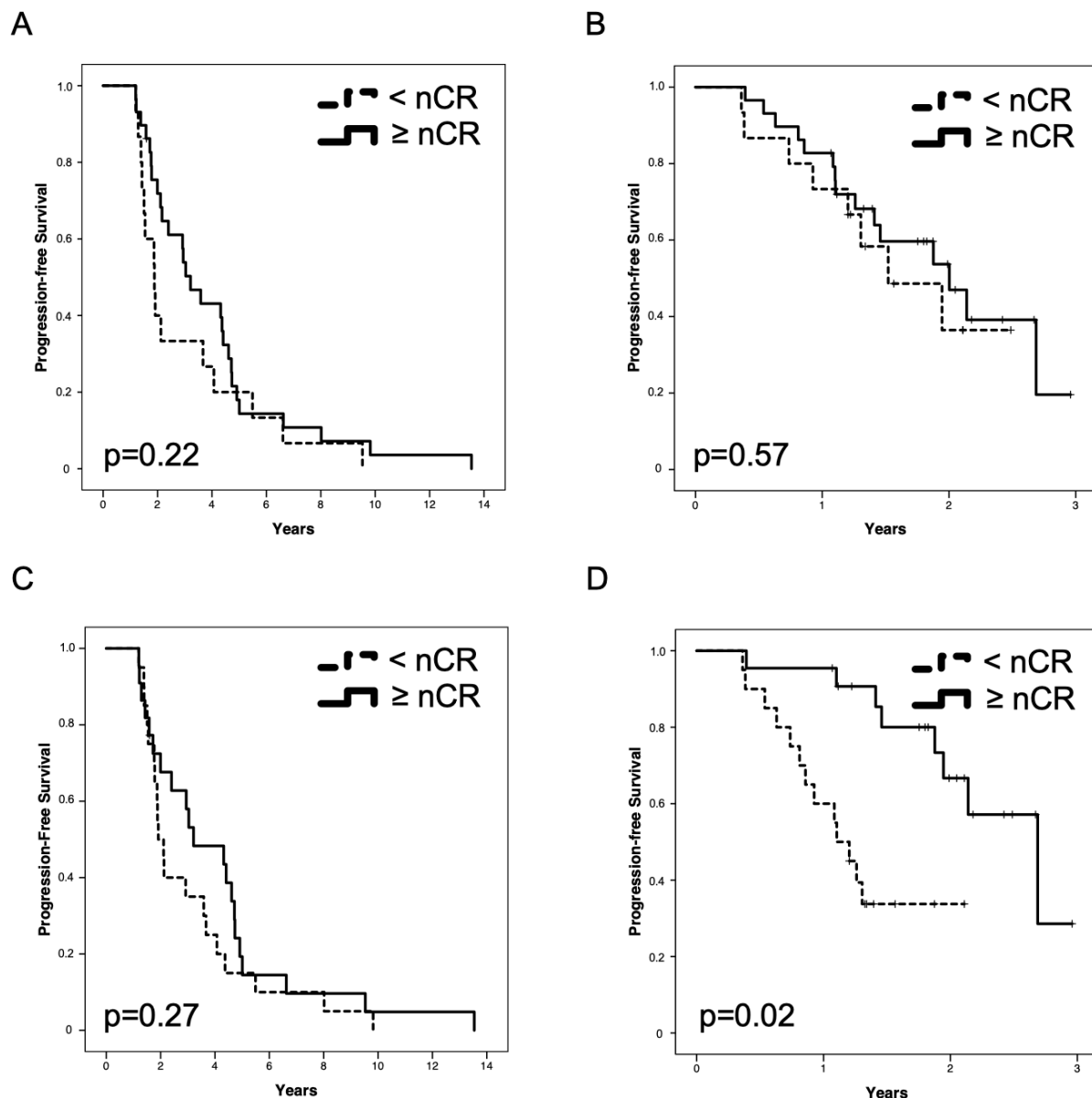


## Supplement



**Supplementary Figure S1:** Kaplan-Meier plots of progression-free survival after frontline (A, C) and salvage HDCT/ASCT (B, D) according to best response ( $\geq nCR$  vs.  $< nCR$ ) during frontline (A, B) and salvage (C, D) treatment. P-values were determined by Cox regression analysis.

**Supplementary Table S1: Adverse events, antimicrobial management and transfusions during frontline and salvage HDCT/ASCT** Data are n/N (%) or median (range) \*covering pseudomonas, <sup>§</sup>antibiotics with exclusive activity against gram-positive bacteria, <sup>§</sup>covering aspergillus. *i.v.*: intravenous

Variable	Frontline transplant	Salvage transplant	p
<b>Infection</b>	40/43 (93%)	41/44 (93%)	1.0
<b>Site of infection</b>			
Fever of unknown origin	32/43 (74%)	29/44 (66%)	0.45
Sepsis	6/43 (14%)	5/44 (11%)	1.0
Soft tissue	1/43 (2%)	2/44 (5%)	1.0
Respiratory	1/43 (2%)	3/44 (7%)	0.63
Gastrointestinal	0/43	2/44 (5%)	0.5

<b>Urogenital</b>	0/43	0/44	
<b>Blood cultures</b>			
<b>Bacteremia</b>	10/41 (24%)	6/39 (15%)	0.39
Gram-positive	8/41 (20%)	5/39 (13%)	0.29
Gram-negative	2/41 (5%)	2/39 (5%)	1.0
<b>Fungemia</b>	-	1/39 (3%)	1.0
<b>Erythrocyte transfusions</b>	18/44 (41%)	12/44 (27%)	<b>0.04</b>
1	-	4/44 (9%)	
2	16/44 (36%)	8/44 (18%)	
>2	2/44 (5%)	-	
<b>Platelet transfusions</b>	24/44	23/44	0.54
1	23/44	19/44	
>1	1/44	4/44	
<b>I.v. antibiotics</b>			
Median Duration [days]	8 (0-18)	8 (0-34)	0.69
Broad-spectrum Beta-lactam*	39/43 (91%)	32/44 (73%)	<b>0.02</b>
Carbapenem	22/43 (51%)	19/44 (43%)	0.66
Broad-spectrum Beta-lactam* and/or Carbapenem	39/43 (91%)	34/44 (77%)	0.11
Gram-positive <sup>s</sup>	10/43 (23%)	10/44 (23%)	1.0
Reserve antibiotics	-	-	
<b>Antimycotics<sup>&amp;</sup></b>	0/43	1/44 (2%)	1.0
<b>Diarrhea</b>			
Frequency	36/43 (84%)	41/44 (93%)	0.13
Median Duration [days]	4.5 (0-17)	8 (0-16)	<b>&lt;0.001</b>
<b>Mucositis</b>	41/42 (98%)	39/41 (95%)	0.31
Grade 0	1/42 (2%)	2/41 (5%)	
Grade 1	13/42 (31%)	11/41 (27%)	
Grade 2	15/42 (36%)	9/41 (22%)	
Grade 3	13/42 (31%)	18/42 (43%)	
Stage 4	-	1/41 (2%)	
<b>Pain scale maximum [median]</b>	5 (0-9)	5 (0-8)	0.23
<b>Continuous i.v. antiemetics</b>	-	1/43 (2%)	1.0
<b>Parenteral nutrition</b>	4/44 (9%)	3/44 (7%)	1.0
<b>Continuous i.v. opioids</b>	6/44 (14%)	6/44 (14%)	1.0
<b>Intensive care unit admission</b>	-	2/44 (5%)	0.5
<b>Dialysis</b>	-	-	
<b>Mechanical ventilation</b>	-	1/44 (2%)	1.0
<b>Catecholamines</b>	-	1/44 (2%)	1.0