

Supplementary Material: Prediction of Radiation-Induced Hypothyroidism Using Radiomic Data Analysis Does Not Show Superiority over Standard Normal Tissue Complication Models

Urszula Smyczynska, Szymon Grabia, Zuzanna Nowicka, Anna Papis-Ubych, Robert Bibik, Tomasz Latusek, Tomasz Rutkowski, Jacek Fijuth, Wojciech Fendler and Bartłomiej Tomasik

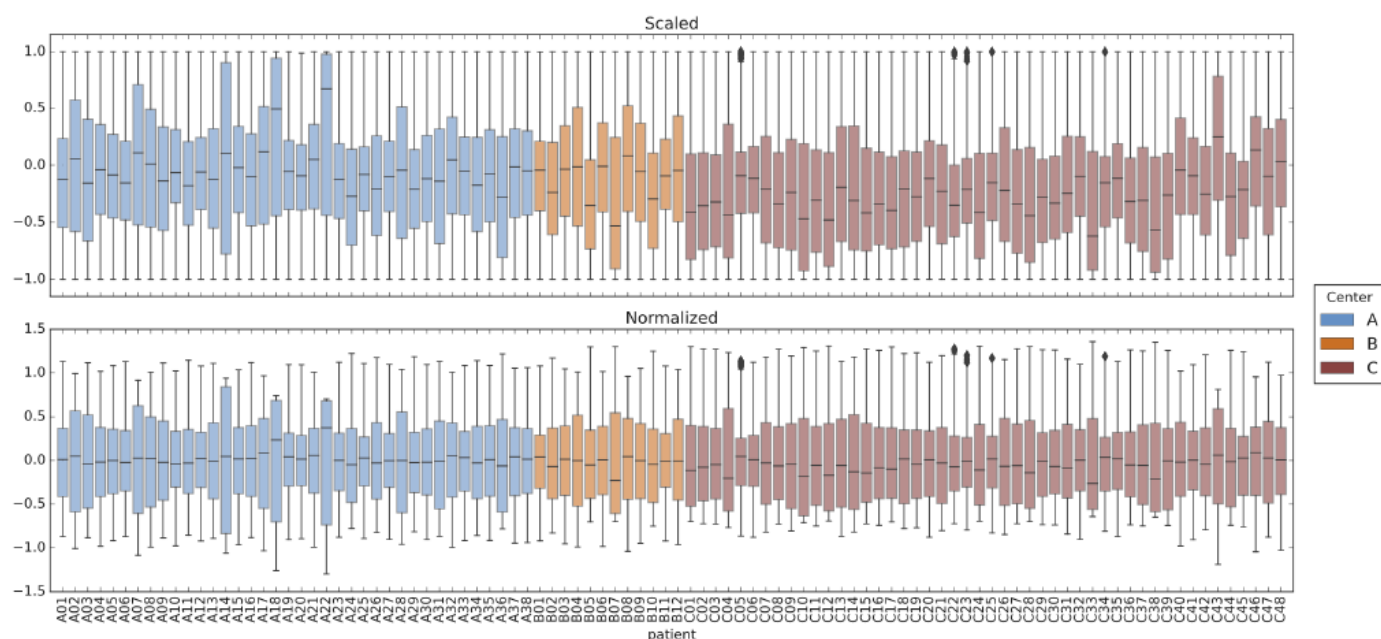


Figure S1. Scaling and normalization of radiomic features' values.

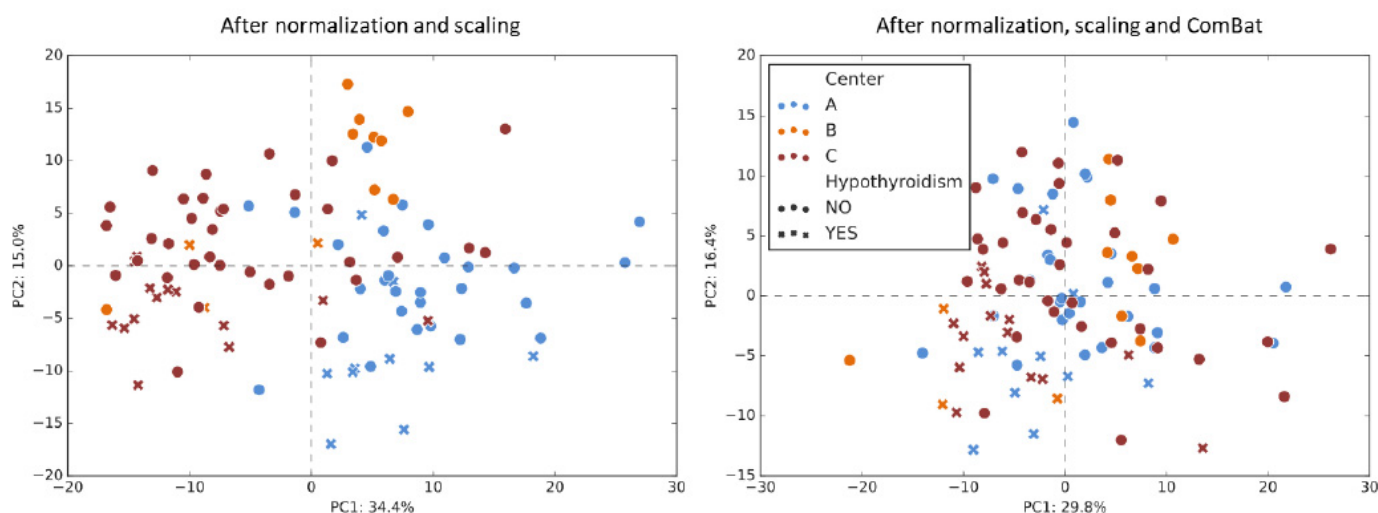


Figure S2. Principal component analysis before and after batch effect correction.

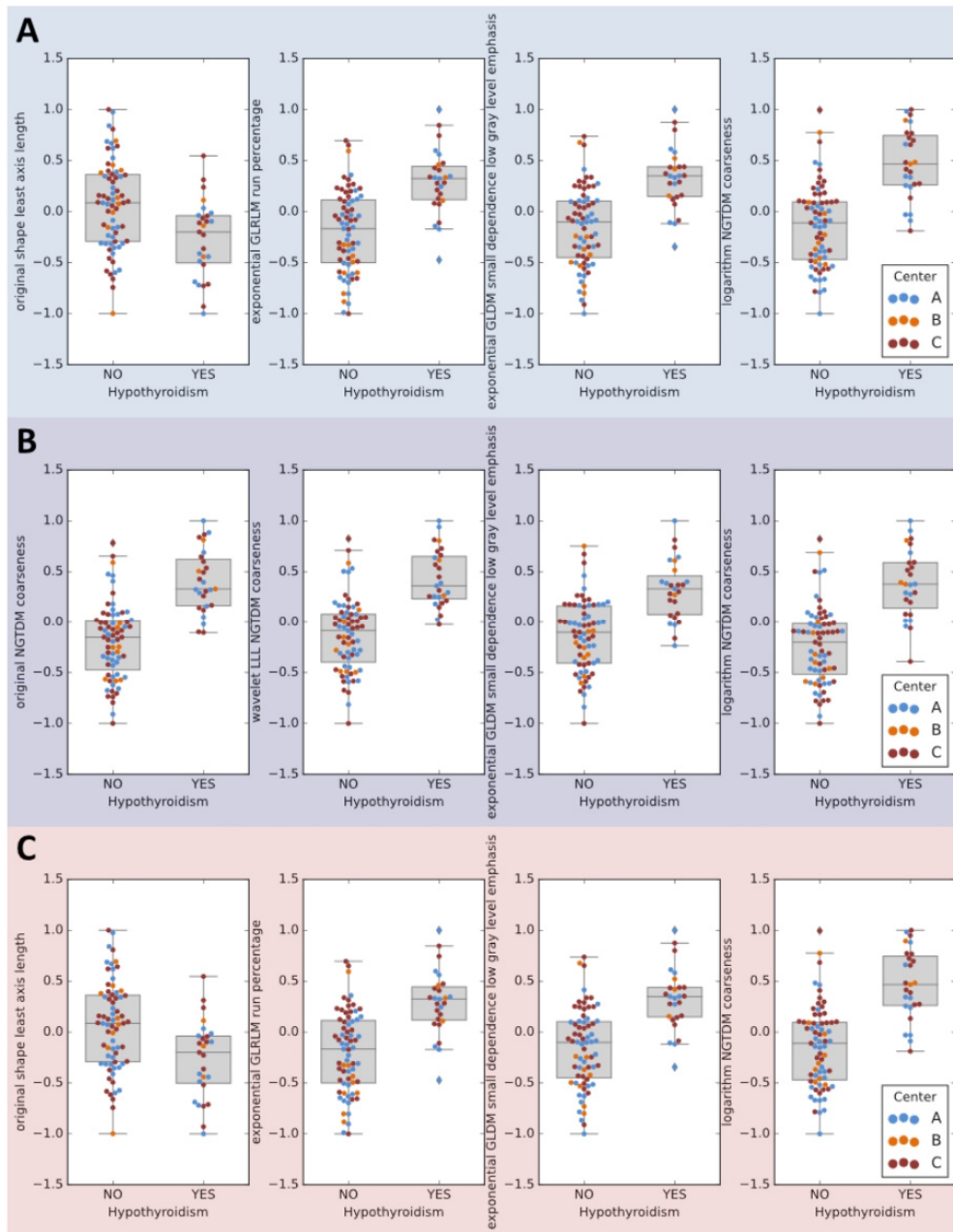


Figure S3. Transformed values of radiomic features retained in radiomic-clinical models. (A) variant Ia, (B) variant Ib, (C) variant II.