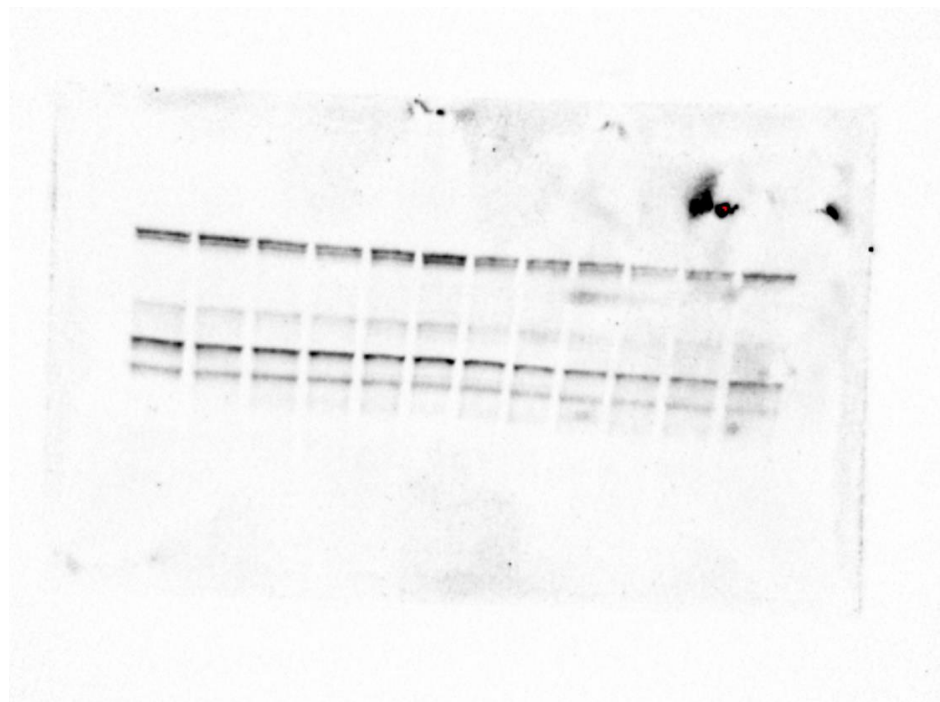


Supplementary S1:

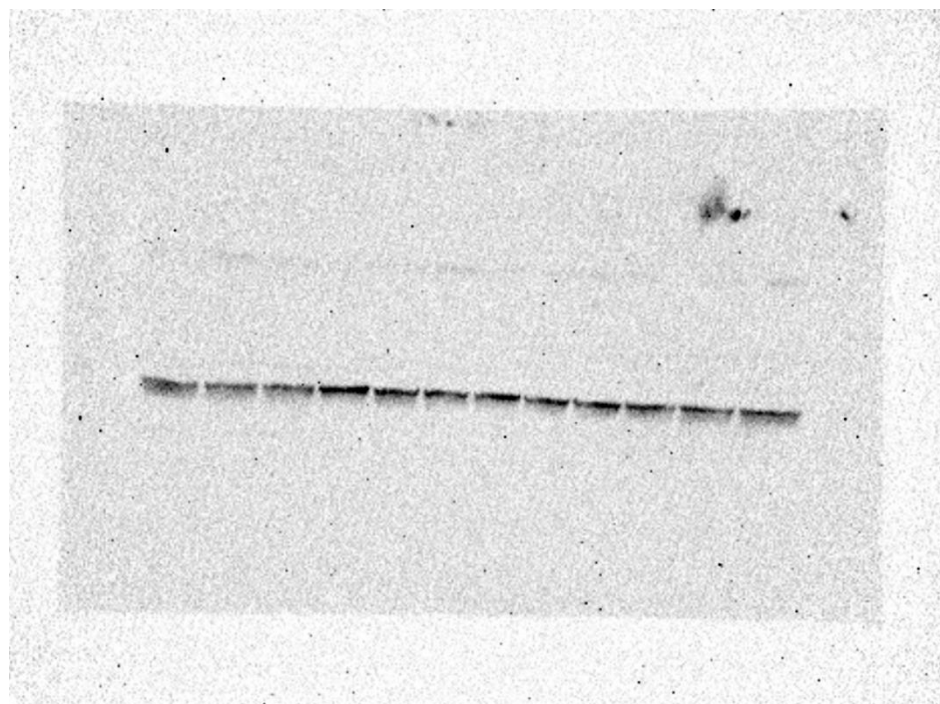
Figure 6

(B)

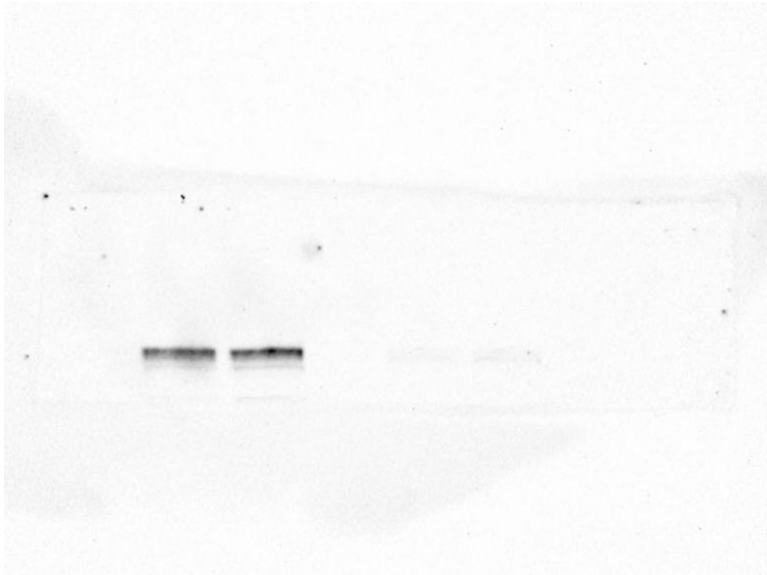
Total BRaf-NSL-YHJ-2-27



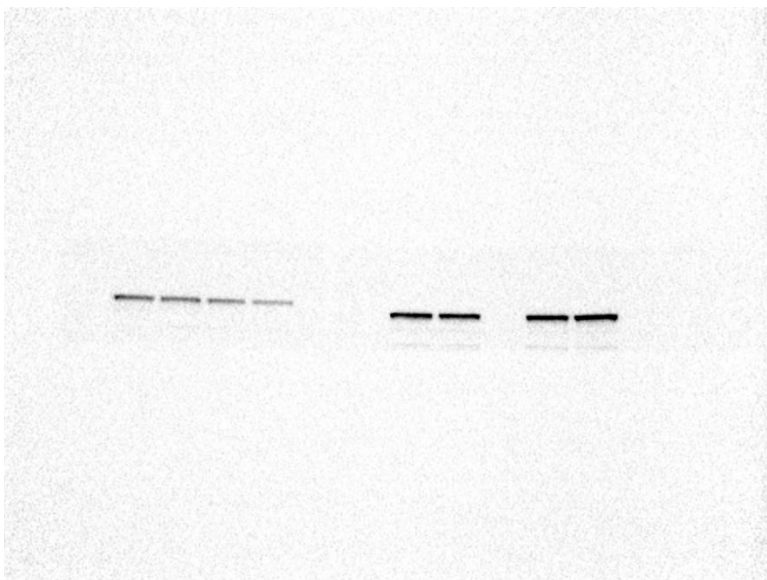
Control



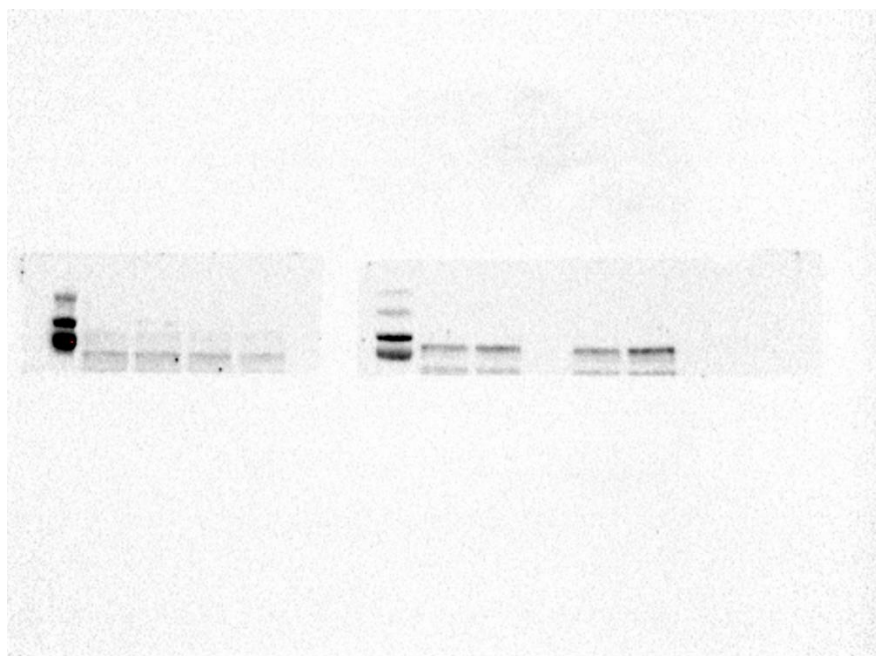
Total Braf-NSL-YHJ-2-62



Control



p-BRaf NSL-YHJ-2-27 and NSL-YHJ-2-62

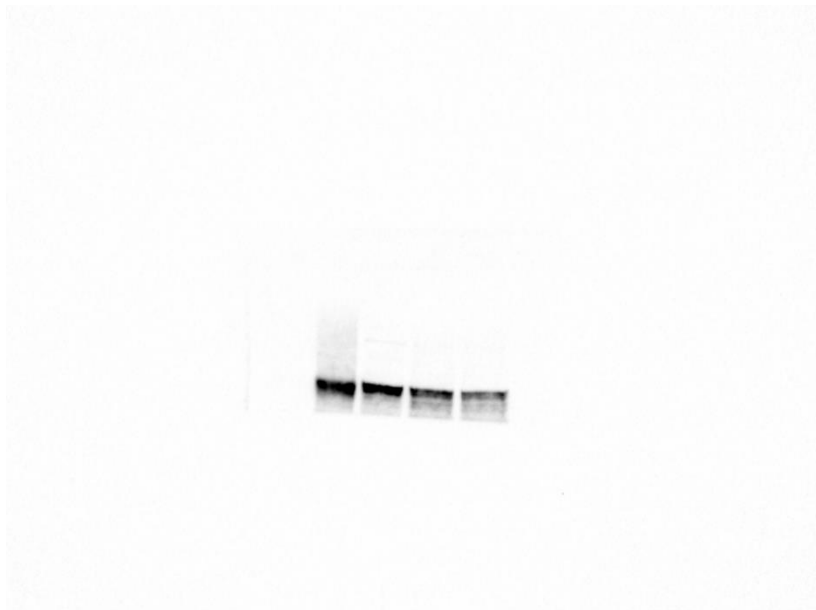


Control



(c)

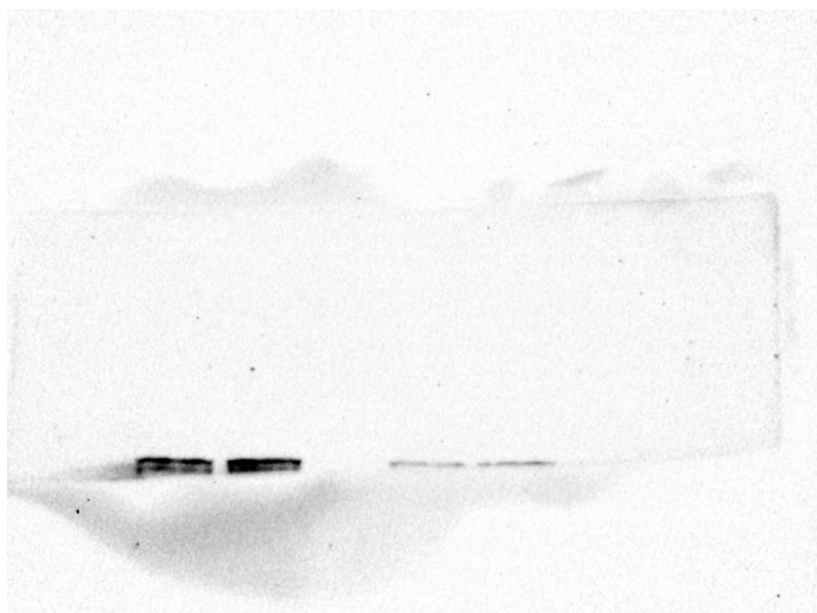
Total CRaf-NSL-YHJ-2-27



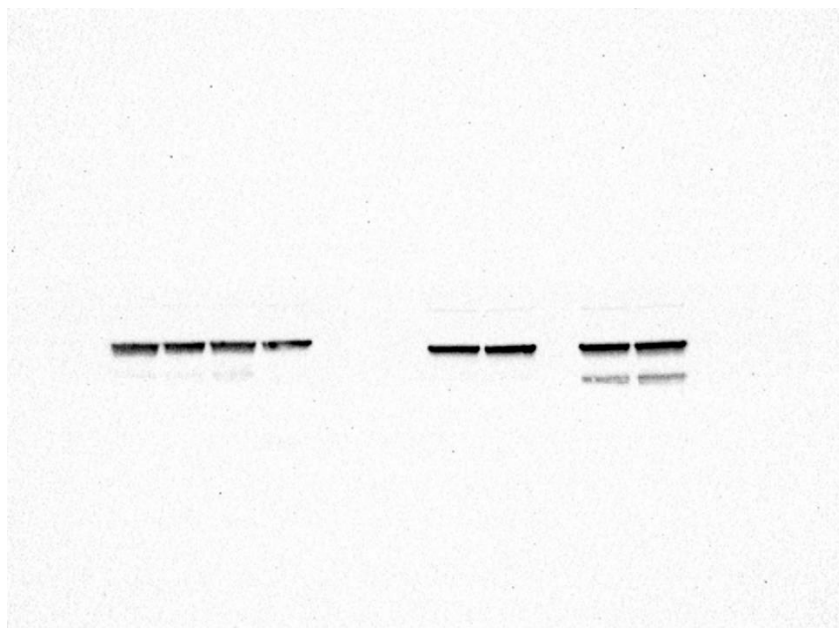
Control



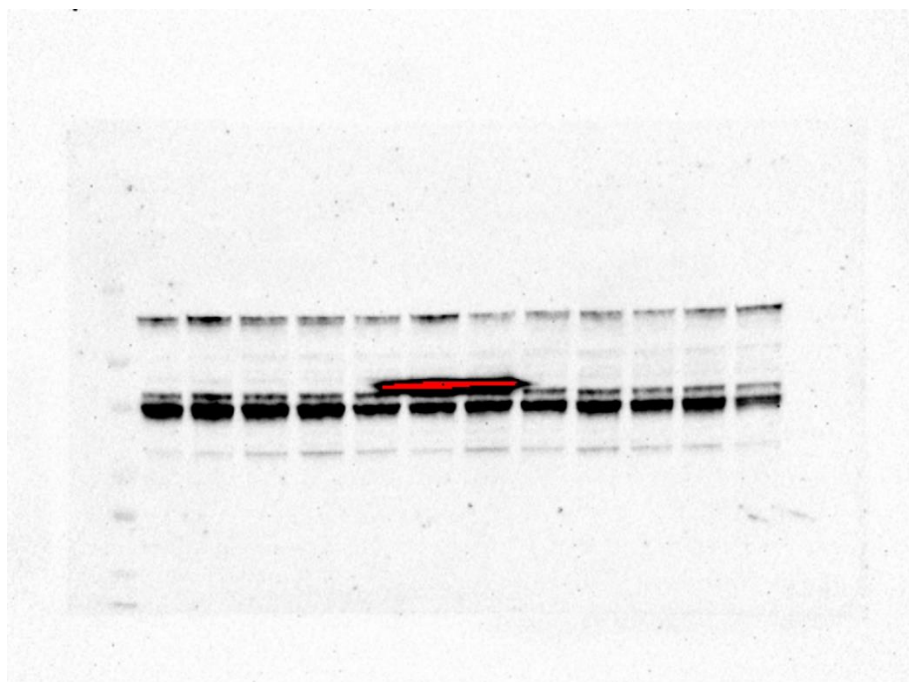
Total CRaf-NSL-YHJ-2-62



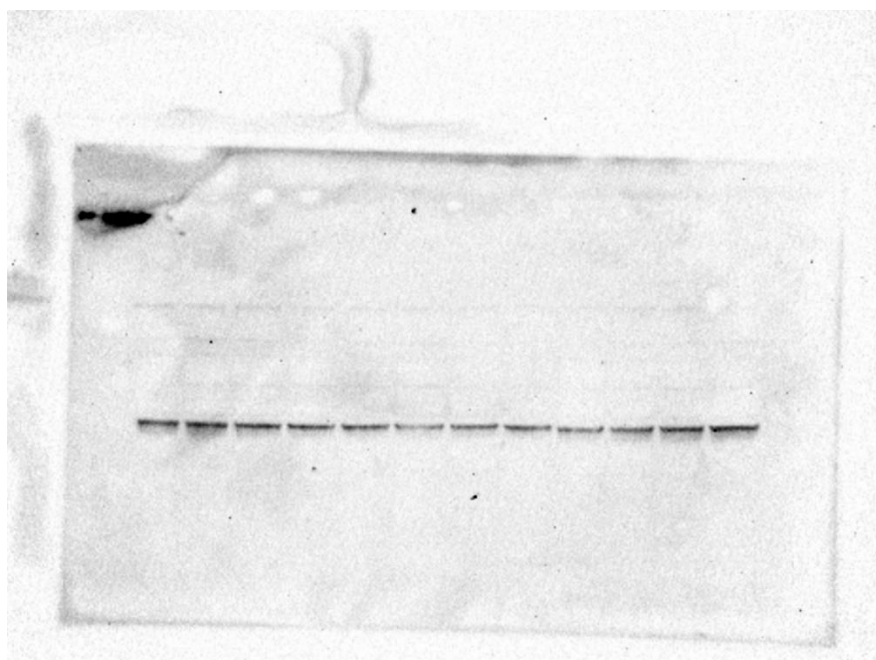
Control



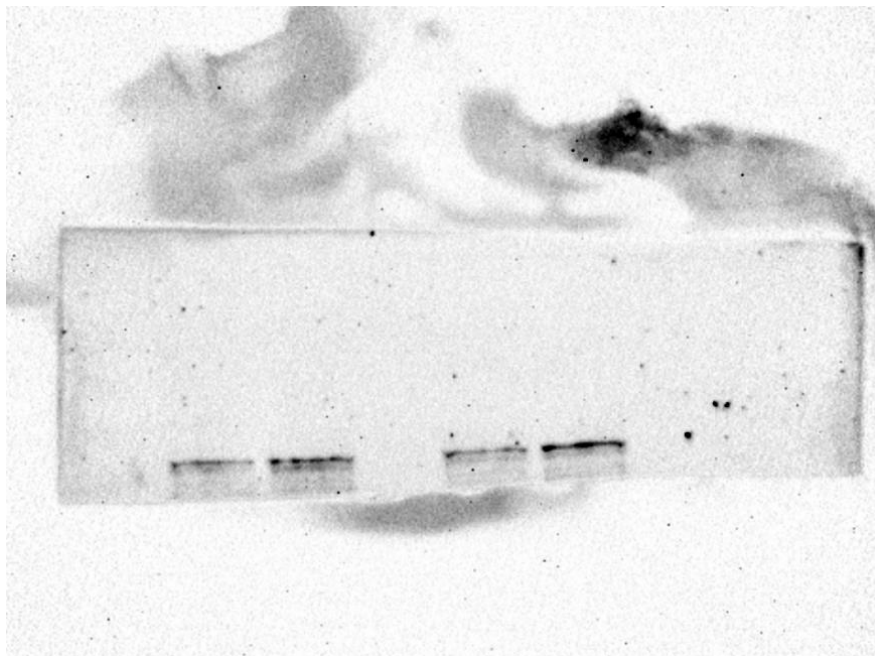
P-Craf-NSL-YHJ-2-27



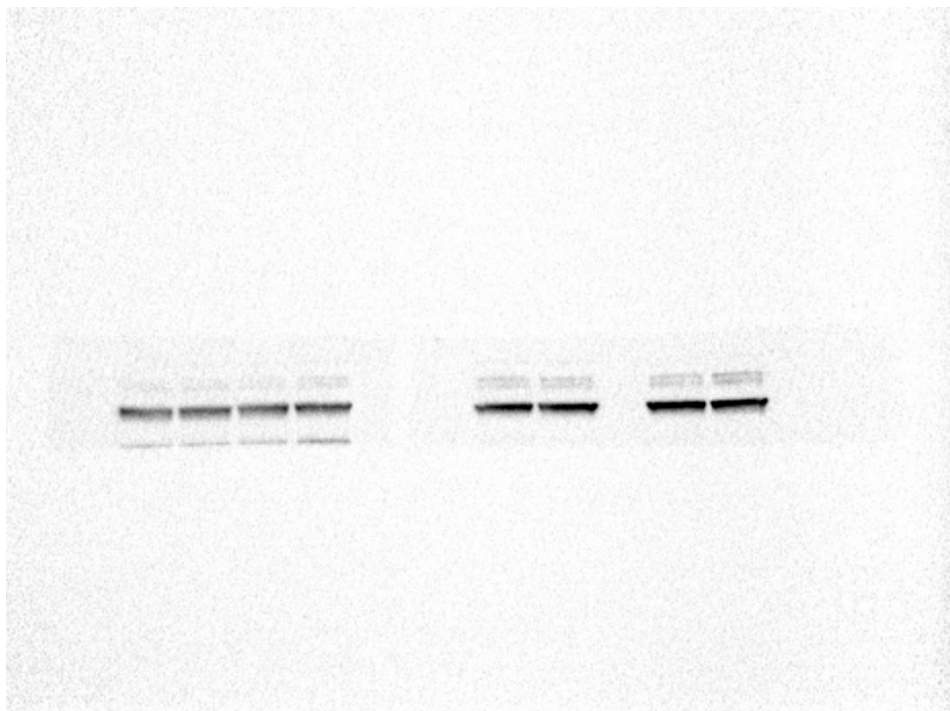
Control



p-CRaf-NSL-YHJ-2-62



Control

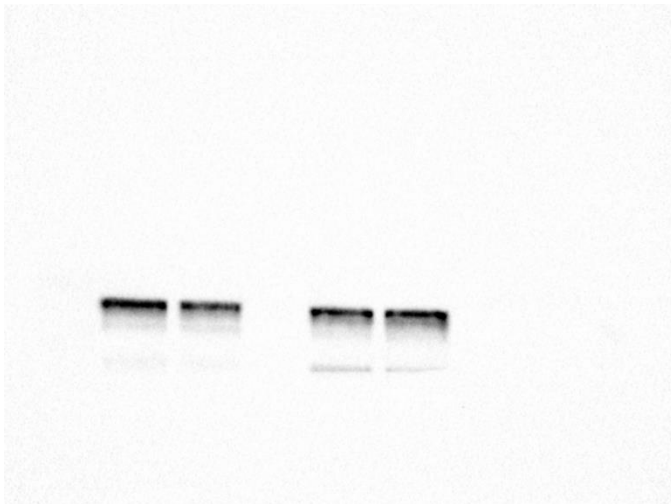


(D)

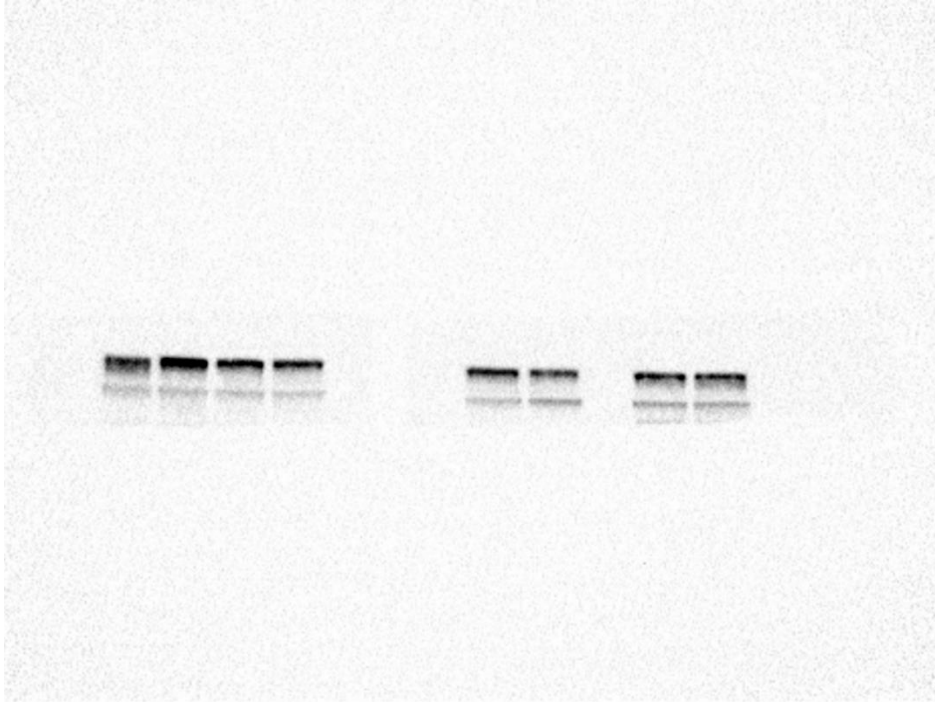
Total MEK1/2-NSL-YHJ-2-27



Total BRAF-NSL-YHJ-2-62



Control



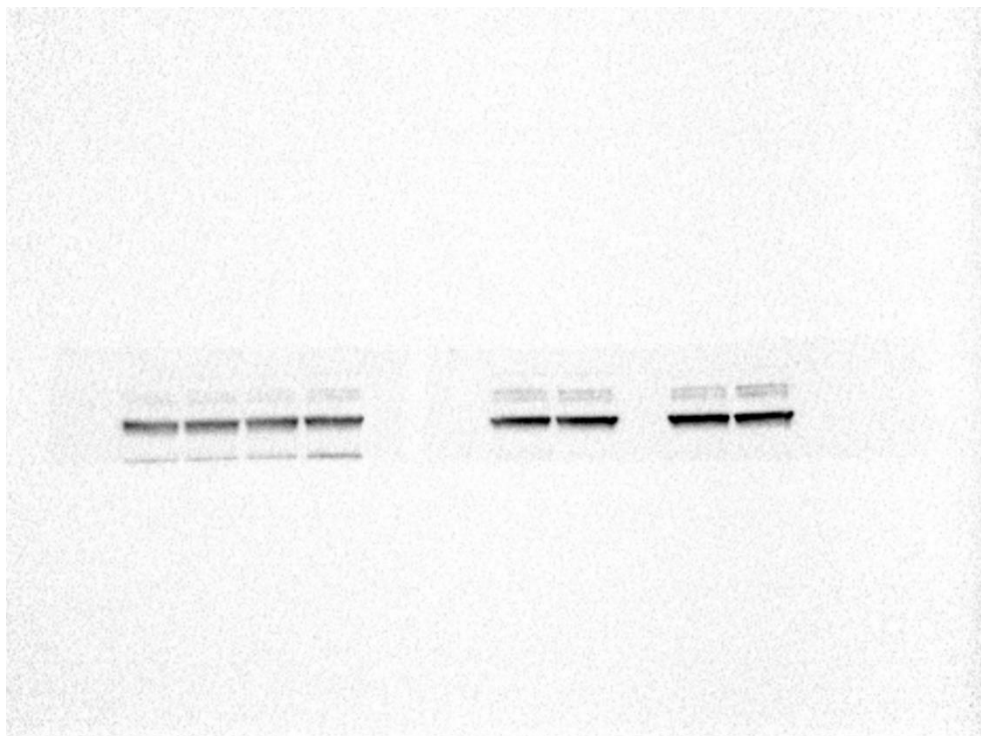
p-MEK1/2-NSL-YHJ-2-27



p-MEK1/2-NSL-YHJ-2-62



Control



(E)

Total ERK1/2-NSL-YHJ-2-27



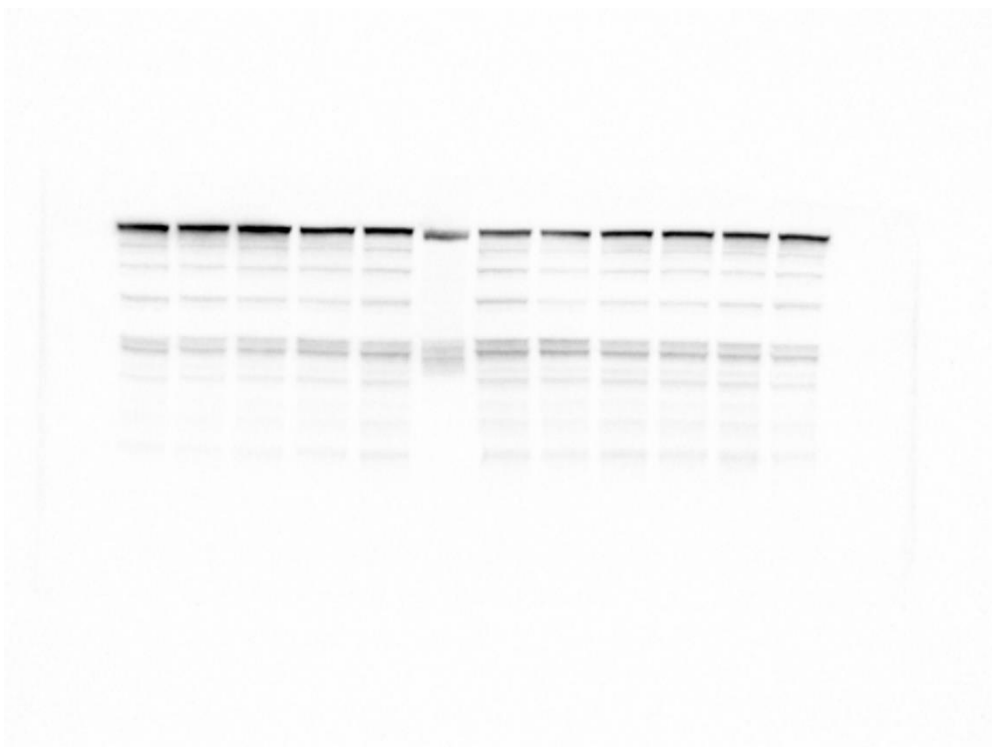
Control



p-ERK1/2-NSL-YHJ-2-27

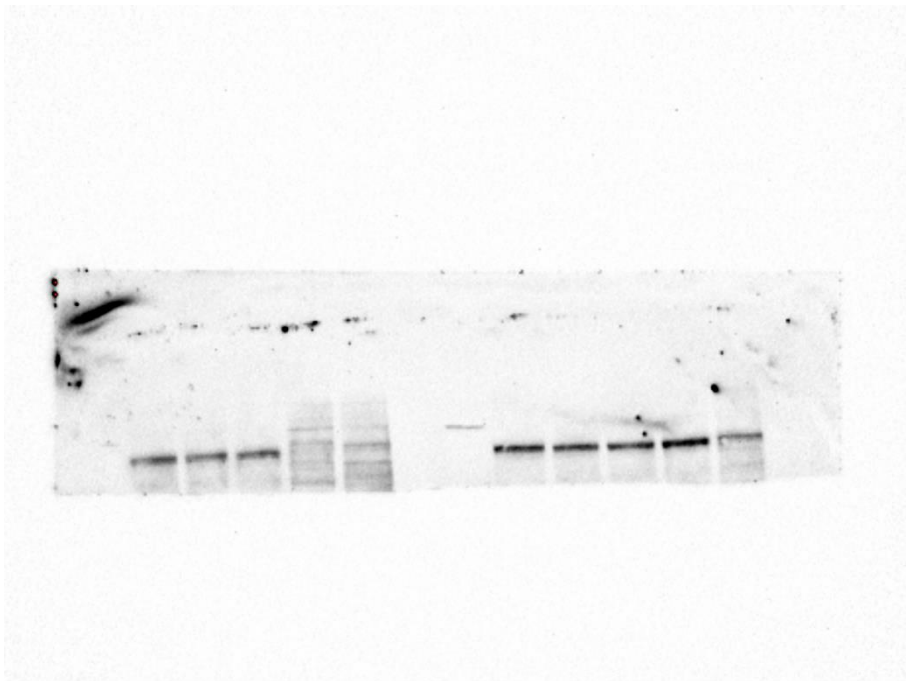


Control



(F)

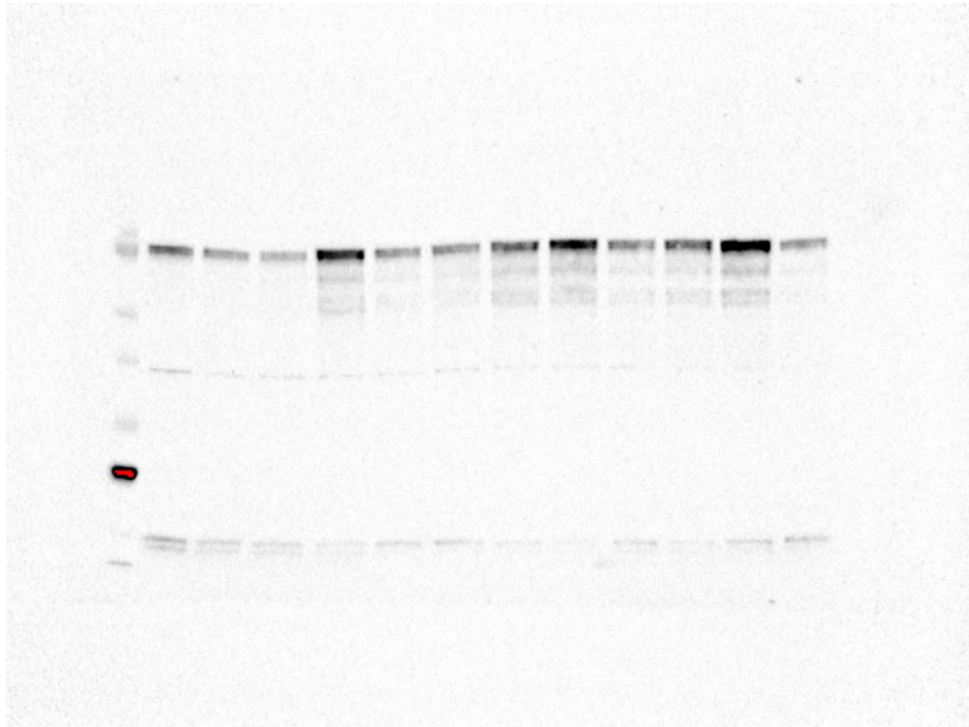
Total RSK1/2/3 NSL-YHJ-2-27 and NSL-YHJ-2-62



Control



p-p90RSK NSL-YHJ-2-27 and NSL-YHJ-2-62



Control

