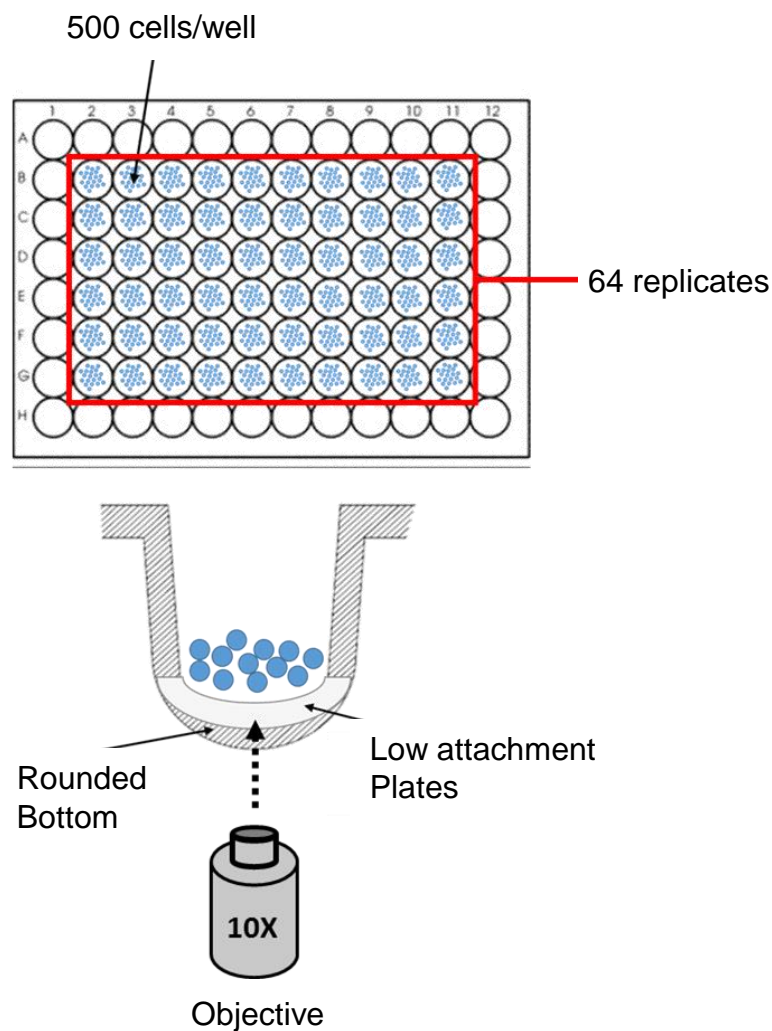
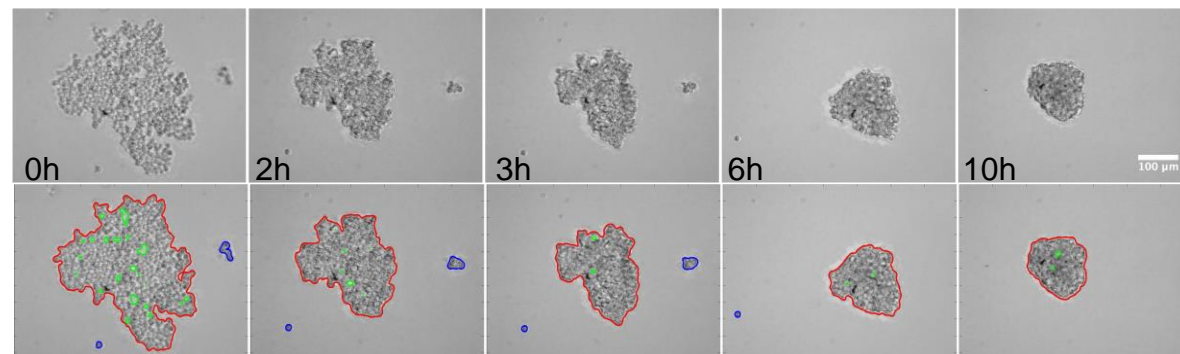


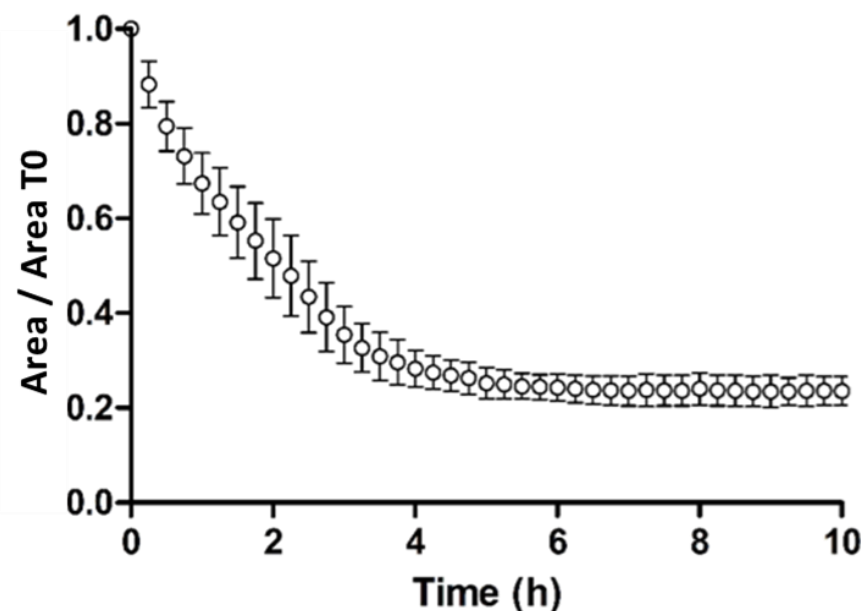
A



B



C



Supplementary Figure S1. Procedure to evaluate anchorage-independent aggregation of cancer cells.

(A) Schematic of the procedure. To avoid edge effects, only 64 samples and/or replicates are seeded and analyzed in each experiment. 500 cells are seeded in each well of a round bottom low-attachment plate. A short centrifugation at 400g allows gathering the cells together at time 0. (B) Representative microscopy images of MCF-7 cell aggregation at the indicated time points. Segmentation (red line) was performed using a dedicated MATLAB software. Green color indicates the excluded holes, and blue lines isolated cells. (C) Representative curve of the normalized area (Area/Area at time 0) obtained with 41 replicates from 5 independent experiments (mean \pm SD).