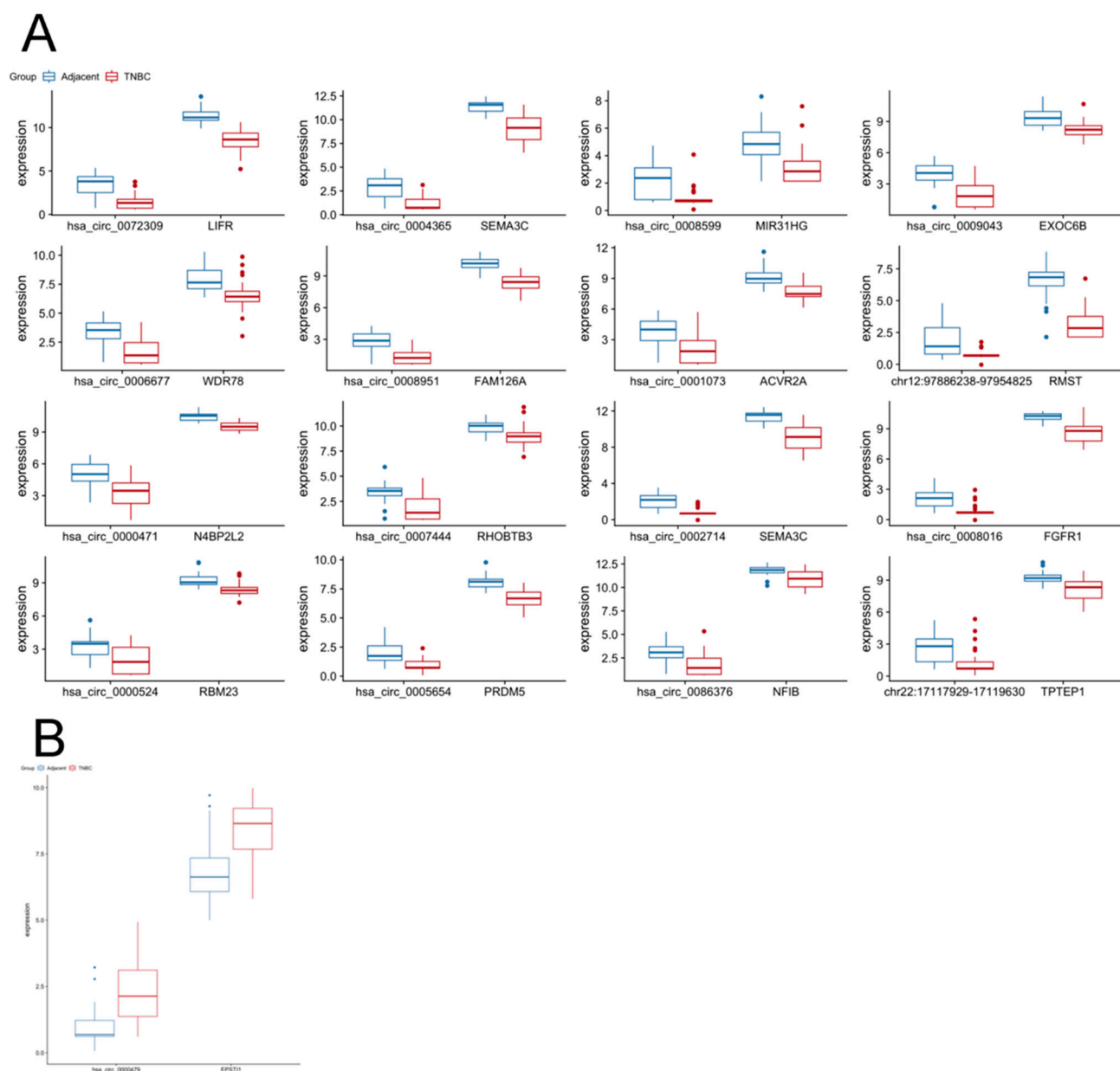
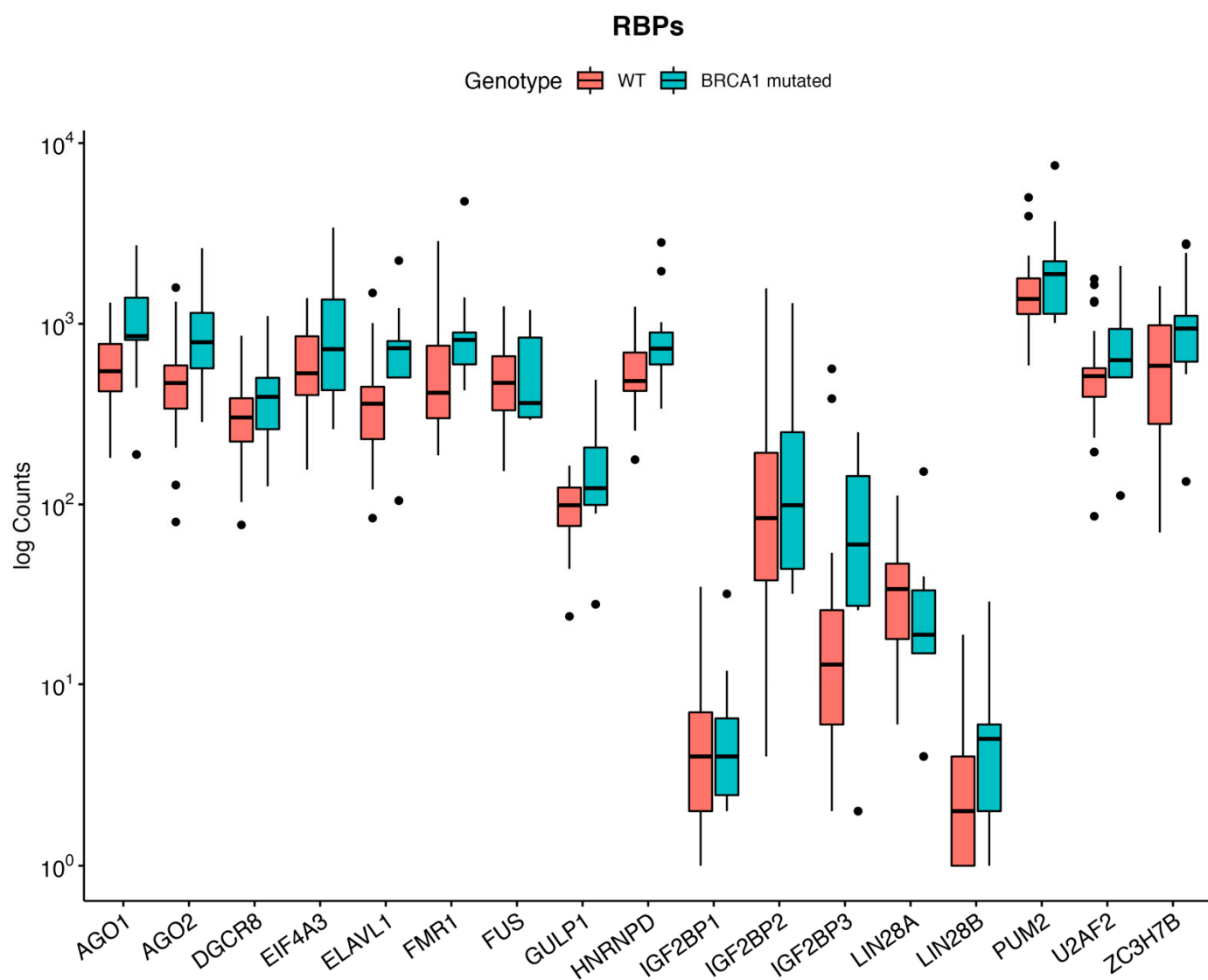


# Supplementary Materials



**Figure S1.** Differentially expressed circRNAs' host genes are also dysregulated and follow the same pattern as their coded circRNAs.



**Figure S2.** All RBPs that are predicted to interact with hsa\_circ\_0001550, circ\_0001178, circ\_0006376, circ\_0023942, circ\_0001314, circ\_0001789 and circ\_0000343 are being expressed in TNBC and when comparing Wildtype with BRCA1 mutated patients, there is no difference in expression re-garding mutational status.

**Table S1.** Information and primer sequences utilized in qRT-PCR.

Primer	Sequence (5'> 3')	Type of primer	Product size
ACTB qPCR F	GCACAGAGCCTCGCCTTT	Converging	70 bp
ACTB qPCR R	TATCATCATCCATGGTGAGCTGG	Converging	
PUM1 qPCR F	ACGTCCTGTCATTGGCACTA	Converging	93 bp
PUM1 qPCR R	TCTCATTAATTACCTGCTGGTCT	Converging	
circ_00072309 qPCR F	GCTCGTAAAATTAGACTGACTGC	Diverging - exon junction	70 bp
circ_00072309 qPCR R	CAGGATGGTCGTTTCAAACATAC	Diverging	
circ_0004365 qPCR F	TCTCGGAACAGGACCAAGTT	Diverging - exon junction	85 bp
circ_0004365 qPCR R	GTGTTCACGTTGGGGTTGAA	Diverging	
circ_0008599 qPCR F	TTCCCAGTTTCAGACCACCC	Diverging	79 bp
circ_0008599 qPCR R	GGACCAGAAACCTGCAGTGT	Diverging - exon junction	
circ_0009043 qPCR F	GCCATGAAGCAAAATCAAGTGA	Diverging - exon junction	72 bp
circ_0009043 qPCR R	TGCTATTACCAGTTCCTTTCCCT	Diverging	
circ_0006677 qPCR F	TAGCAGAAGACCTGGAAGAACCA	Diverging	70 bp
circ_0006677 qPCR R	TGTGGCATTGTTCTGTGAAACT	Diverging - exon junction	
circ_0000479 qPCR F	AGCATCAGCAATACACAAGTGC	Diverging - exon junction	81 bp
circ_0000479 qPCR R	GCTCCGCAATTCTTTGTATCTC	Diverging	

**Table S2.** Differentially expressed circRNAs in TNBC patients with BRCA1 mutations when comparing to Wildtype ones.

Gene	Strand	CircRNA	Expression Profile	BaseMean	Log2FC	Padj
<i>CLSN1</i>	-	hsa_circ_0000343	Upregulated	2.478855444	3.822544815	0.0489
<i>RAB11FIP1</i>	-	hsa_circ_0001789	Upregulated	3.872956911	3.81113078	0.0422
<i>FAM208A</i>	-	hsa_circ_0001314	Upregulated	1.785044727	3.73400603	0.0454
<i>HIBADH</i>	-	hsa_circ_0006773	Upregulated	1.801634675	3.600076978	0.0454
<i>PICALM</i>	-	hsa_circ_0023942	Upregulated	2.140926545	3.401582269	0.0454
<i>HOOK3</i>	+	hsa_circ_0006376	Upregulated	3.35953751	3.204640961	0.0489
<i>USP25</i>	+	hsa_circ_0001178	Upregulated	4.27055334	2.605783073	0.0454
<i>RARS</i>	+	hsa_circ_0001550	Upregulated	12.40200043	2.146674774	0.0422
<i>TCONS_00015354</i>	+	hsa_circ_0001821	Downregulated	5.494354843	-2.391511722	0.0454