

Article

Urine CA125 and HE4 for the Triage of Symptomatic Women with Suspected Endometrial Cancer

Kelechi Njoku, Chloe E. Barr, Caroline J. J Sutton and Emma J. Crosbie

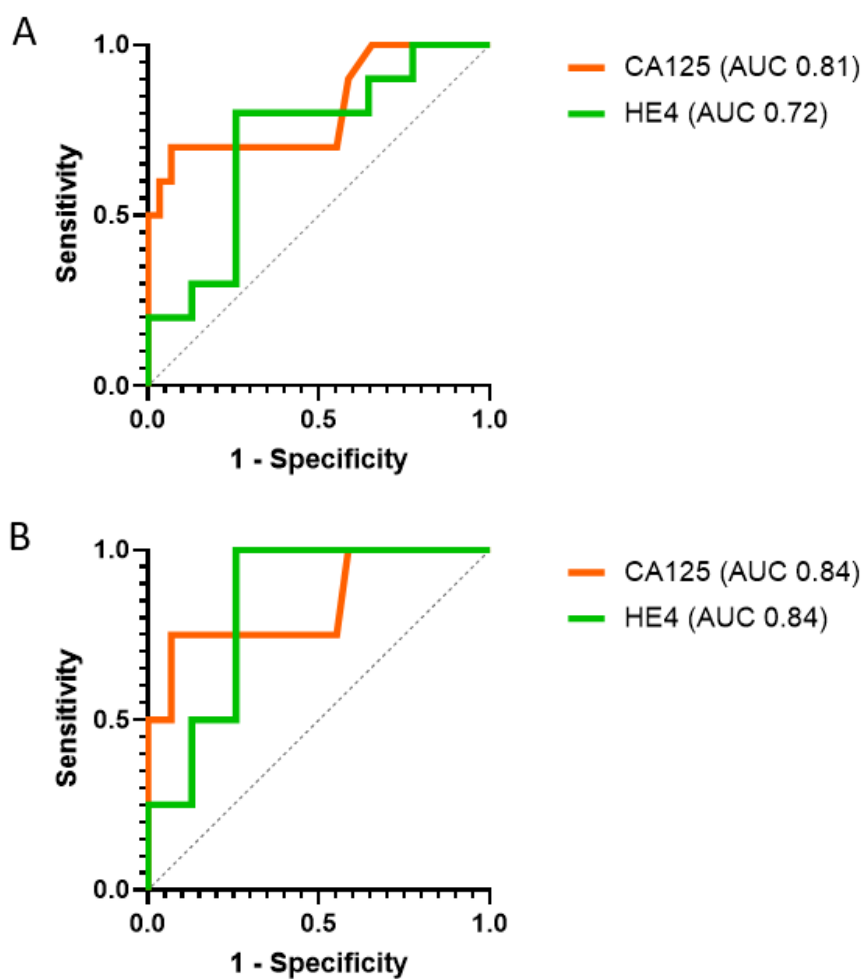


Figure S1. ROC curve analysis of urine CA125 and HE4 for (A) the detection of Type II endometrial cancer and (B) advanced stage (FIGO III/IV) disease.

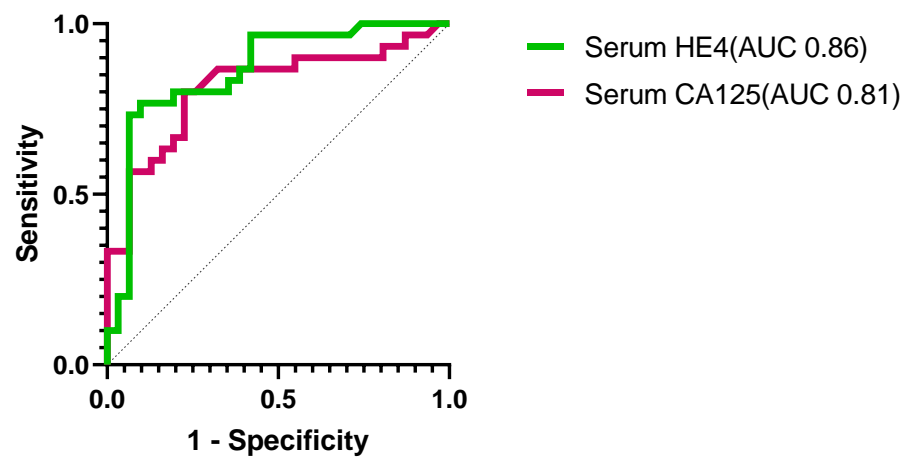


Figure S2. ROC curve analyses of serum CA125 and HE4 for the detection of endometrial cancer.

Table S1. Diagnostic performance of urine CA125 and HE4 levels based on logistic regression in the discovery cohort.

Model	Prediction	Crude OR (95%CI)	Crude <i>p</i> -value	Adjusted OR (95%CI)	Adjusted <i>p</i> -value
Based on optimal diagnostic thresholds					
CA125	Disease status	27(6.8,107.3)	<0.001	42(7.2,247)	<0.001
HE4		6.7(2.2,20.6)	0.001	8.9(2.3,35.1)	0.002
Based on CA125 and HE4 as continuous data					
CA125	Disease status	1.4(1.1,1.7)	0.002	1.5(1.2,1.9)	0.002
HE4		1.05(1.0,1.09)	0.04	1.05(1.00,1.07)	0.049

Adjusted models include age, BMI and T2DM status.