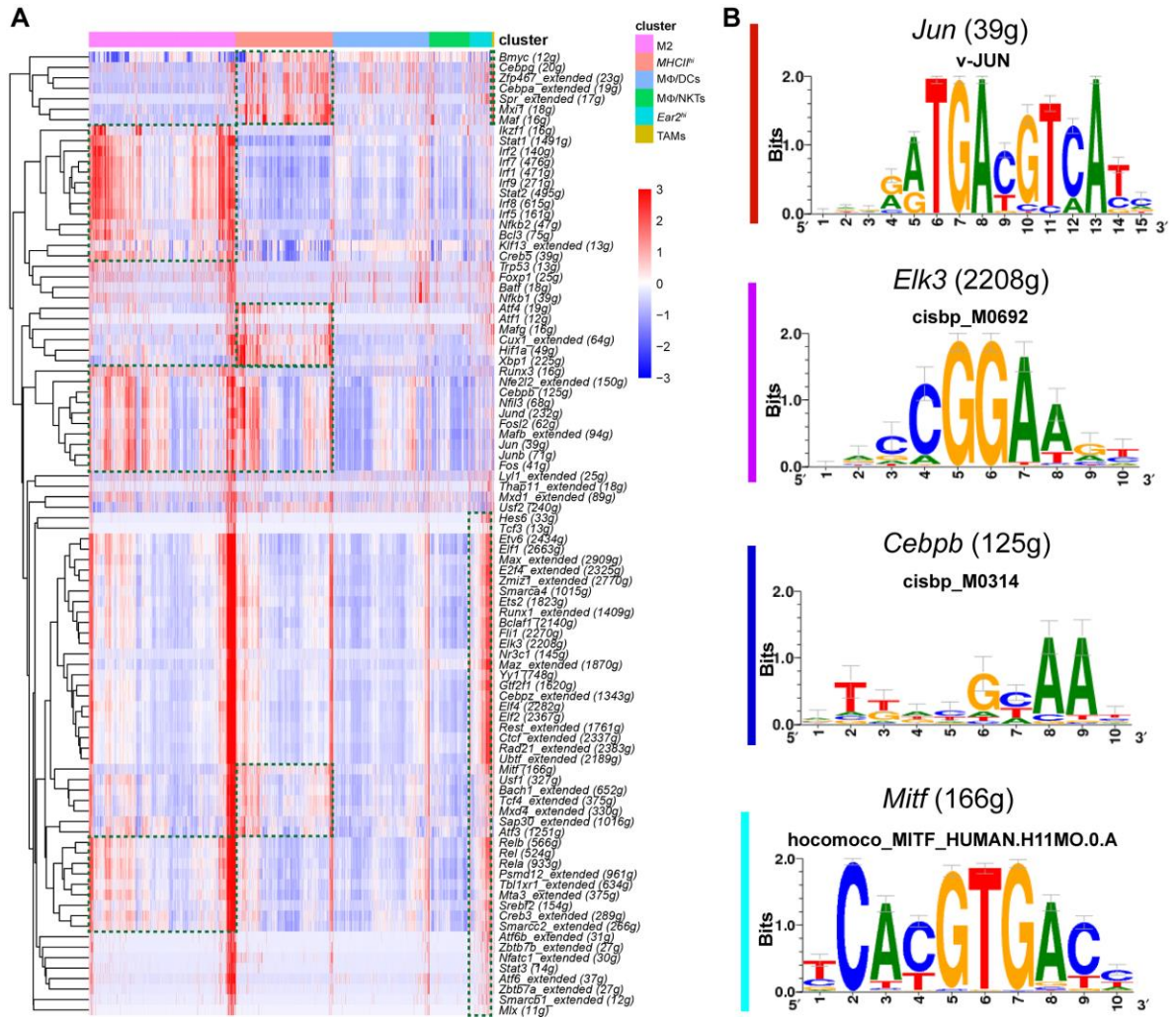


**Figure S1.** The tumours were dissected from the mice, digested into single-cell suspension and stained for analysis by flow cytometry. (A) The flow cytometric graphs of tumour infiltrating macrophages (CD45+CD11b+F4/80+), (B) The flow cytometric graphs of lymphocyte (CD45.2+) and (C) The flow cytometric graphs T cells (CD3+).





**Figure S3.** The regulation of MΦ populations in the triple therapy. (A) SCENIC analysis of the MΦs in the TME; differential regulators are circled. (B) The corresponding enriched DNA-binding motifs are shown (Logo); the regulators are colour matched with the TFs in Figure 4A.

