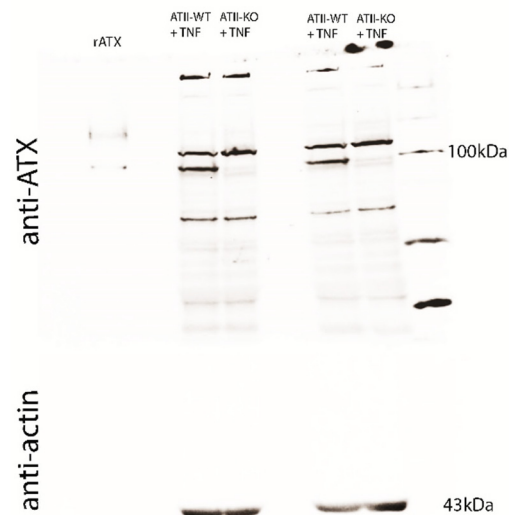


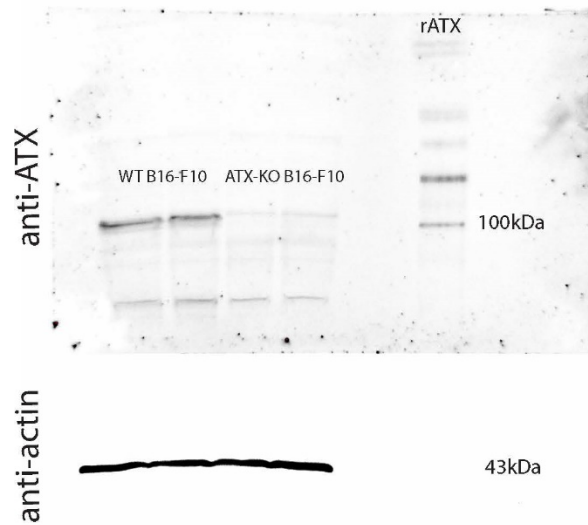
## Supplementary Materials:

Figure S1



**Figure S1.** Western blot analysis of cell lysates from ATII cells from *Sftpc*-WT mice (lanes 3 and 6) and *Sftpc*-KO mice (lanes 4 and 7) treated with TAM. Recombinant ATX (rATX, lane 1) was used as a positive control. Two weeks post-TAM treatment, ATII cells were isolated from *Sftpc*-WT and *Sftpc*-KO mice and put in culture for 5 days. Eighteen hours prior to lysate being harvested, cells were cultured in serum-free medium + 10 ng/mL of TNF $\alpha$ , in order to stimulate ATX production. One hundred fifty micrograms of protein was loaded into an 8% SDS-PAGE. A ~100 kDa band corresponding to ATX can be observed.

Figure S2



**Figure S2.** Western blot analysis of cell lysates performed in two technical repeats of WT B16-F10 cells (lanes 1 and 2, respectively) and ATX-KO B16-F10 cells (lanes 3 and 4, respectively). Recombinant ATX (rATX, lane 6) was used as a positive control. Cell lines were cultured for 18 h in serum-free medium before lysates were harvested. One hundred micrograms of protein was loaded into an 8% SDS-PAGE.