

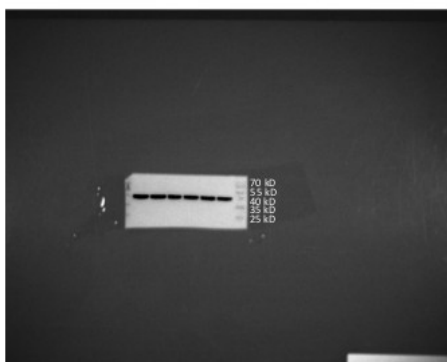
Figure S1. Morphological changes and Ca^{2+} staining after SDT treatment. (A) Free Ca^{2+} enters into the U251 cells, and the cell membranes become swollen (white arrow) due to the increased cell volume after 3 h. (B) Scattered distribution of intracellular Ca^{2+} after 24 h; (C) after Fig. S1 B was overexposed, the outline of the swollen cell membrane could be seen clearly (white arrow). Scale bar, 10 μm .

FABP4-U251

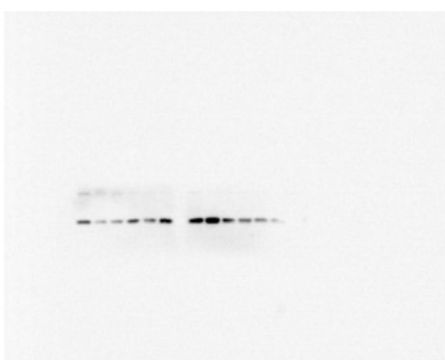
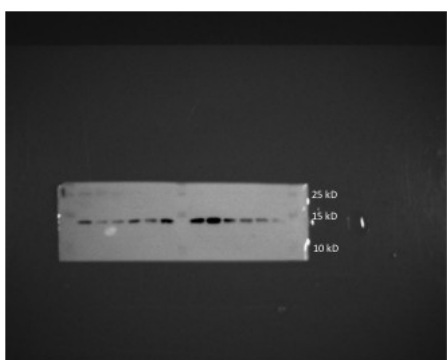
15%

3h-6h

β -actin

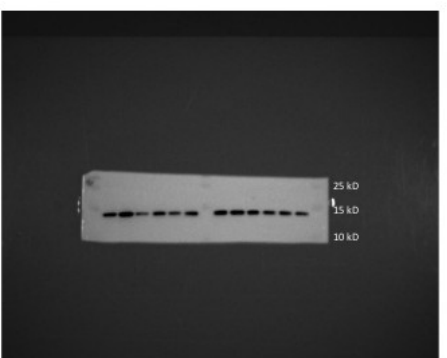


FABP4



12h-24h

FABP4

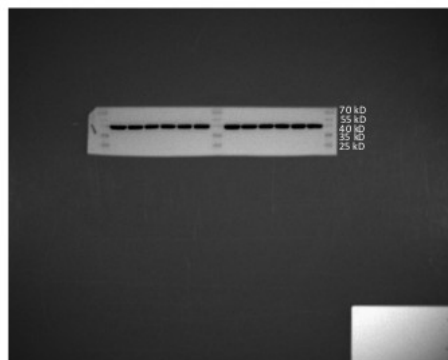


FABP4-U87

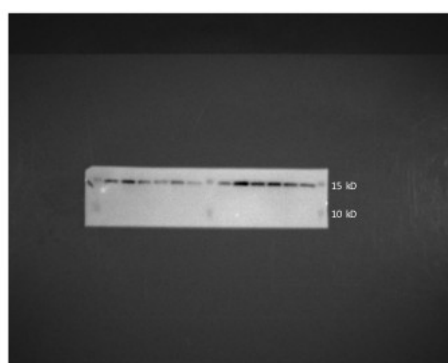
15%

3h-6h

β -actin



FABP4



12h-24h

FABP4

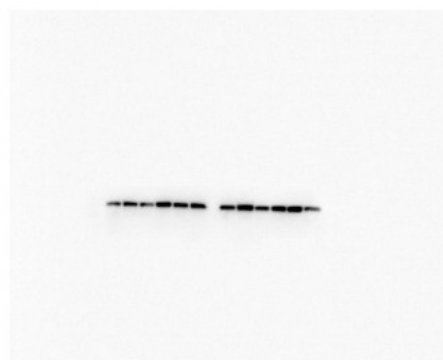
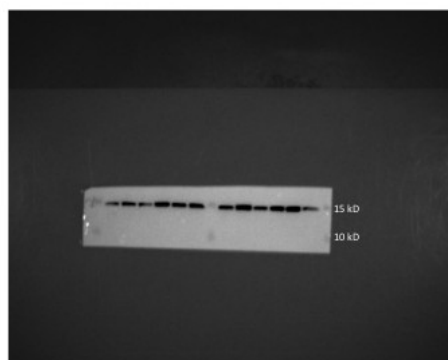


Figure S2: Uncropped WB figures.