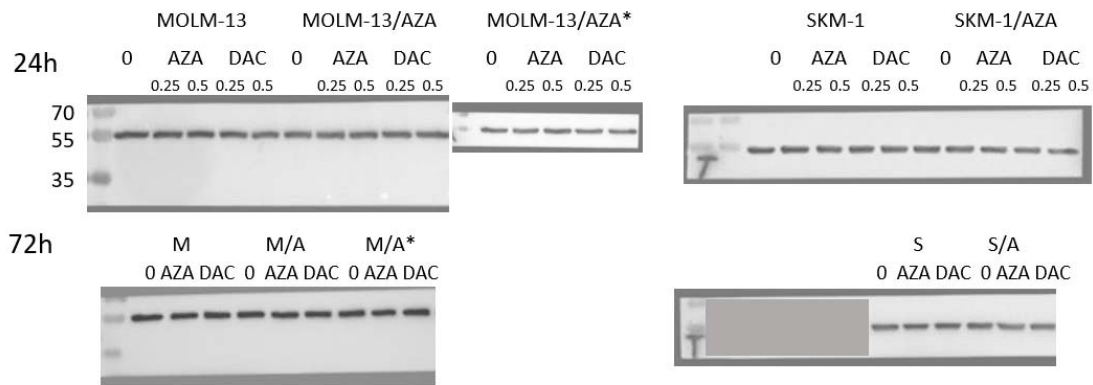
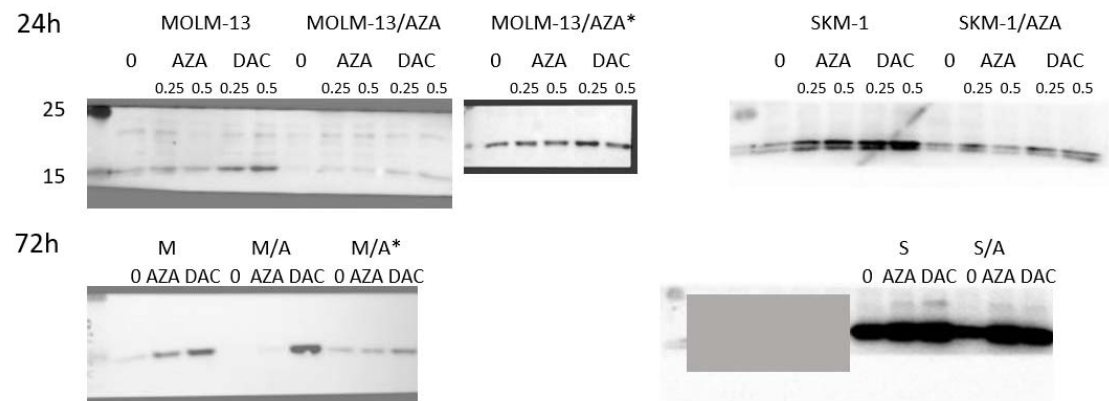


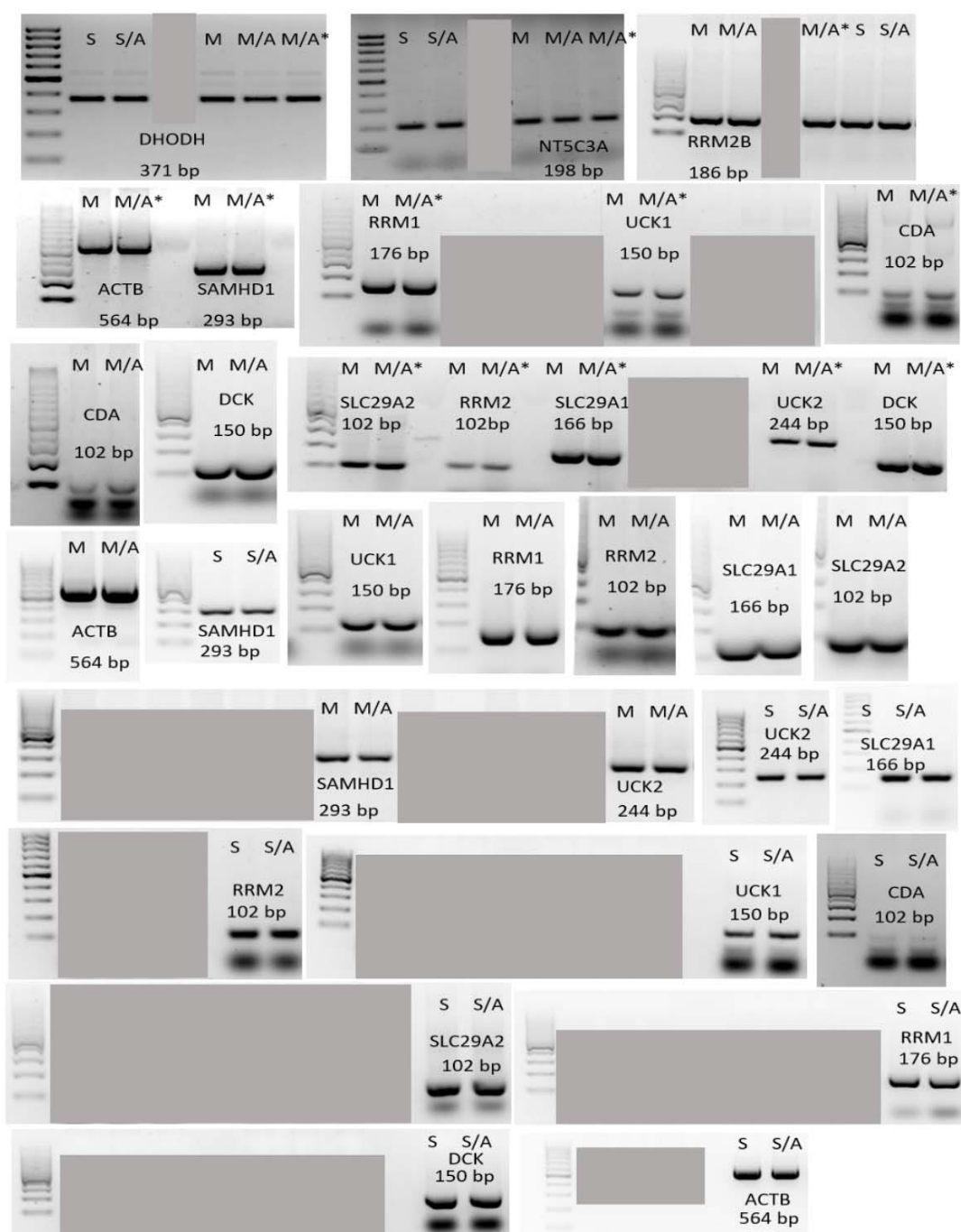
## A $\alpha$ -Tubulin - 52 kDA



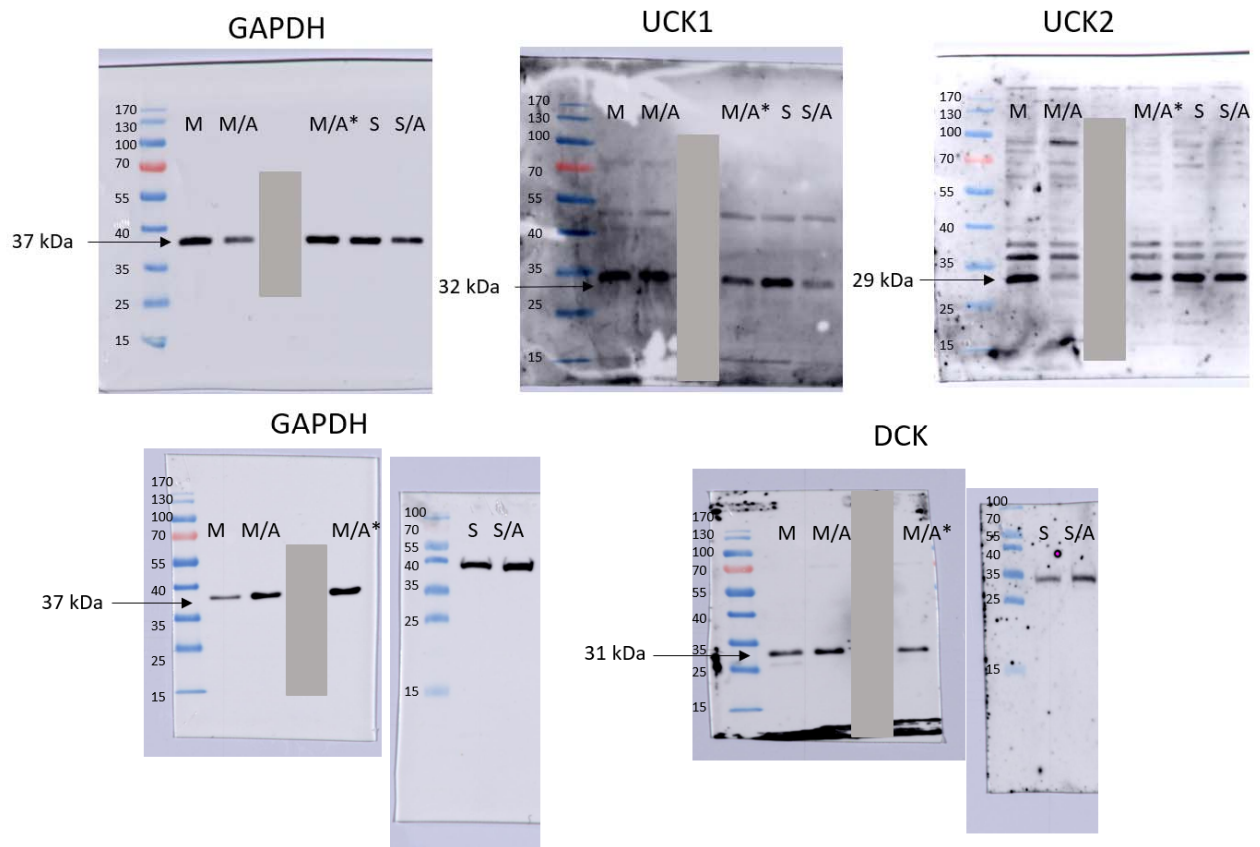
## B $\gamma$ -H2AX - 15 kDA



**Figure S5.** Uncropped membranes of **A)**  $\alpha$ -Tubulin and **B)**  $\gamma$ -H2AX protein detection by Western blot (Figure 3B). Gray boxes – different cell variants, that are not the object of the current study and will be published in another article.



**Figure S6.** Agarose gels with electrophoretically separated RT-PCR products (Figure 4A). Gray boxes – different cell variants, that are not the object of the current study and will be published in another article.



**Figure S7.** Uncropped membranes of GAPDH, UCK1, UCK2 and DCK protein detection by Western blot (Figure 4B). Gray boxes – different cell variants, that are not the object of the current study and will be published in another article.