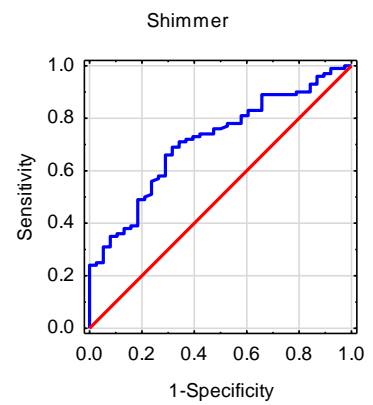
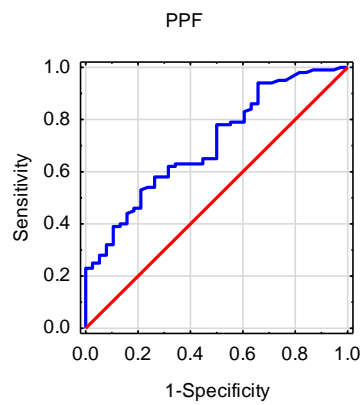
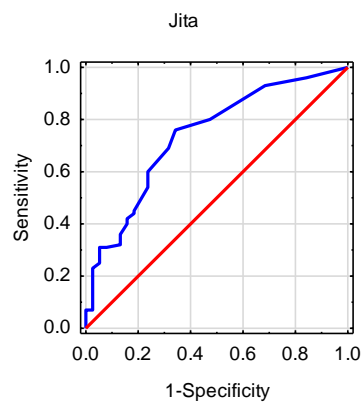
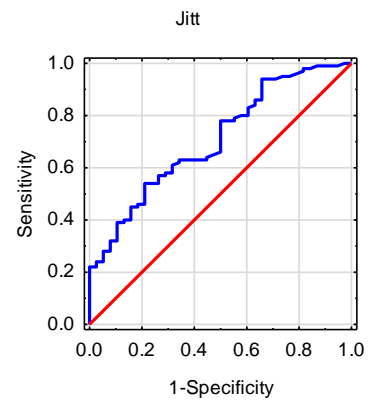
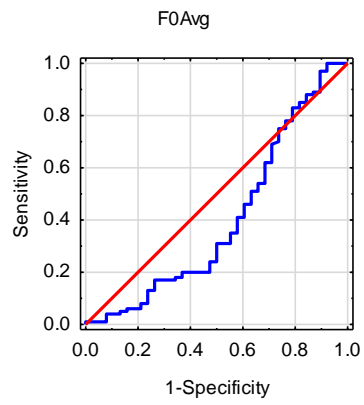
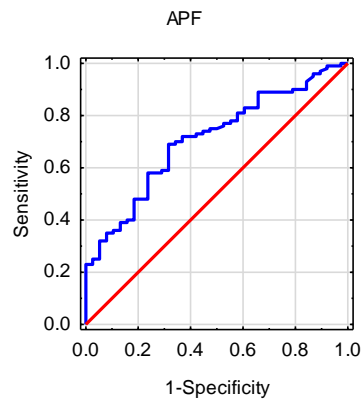
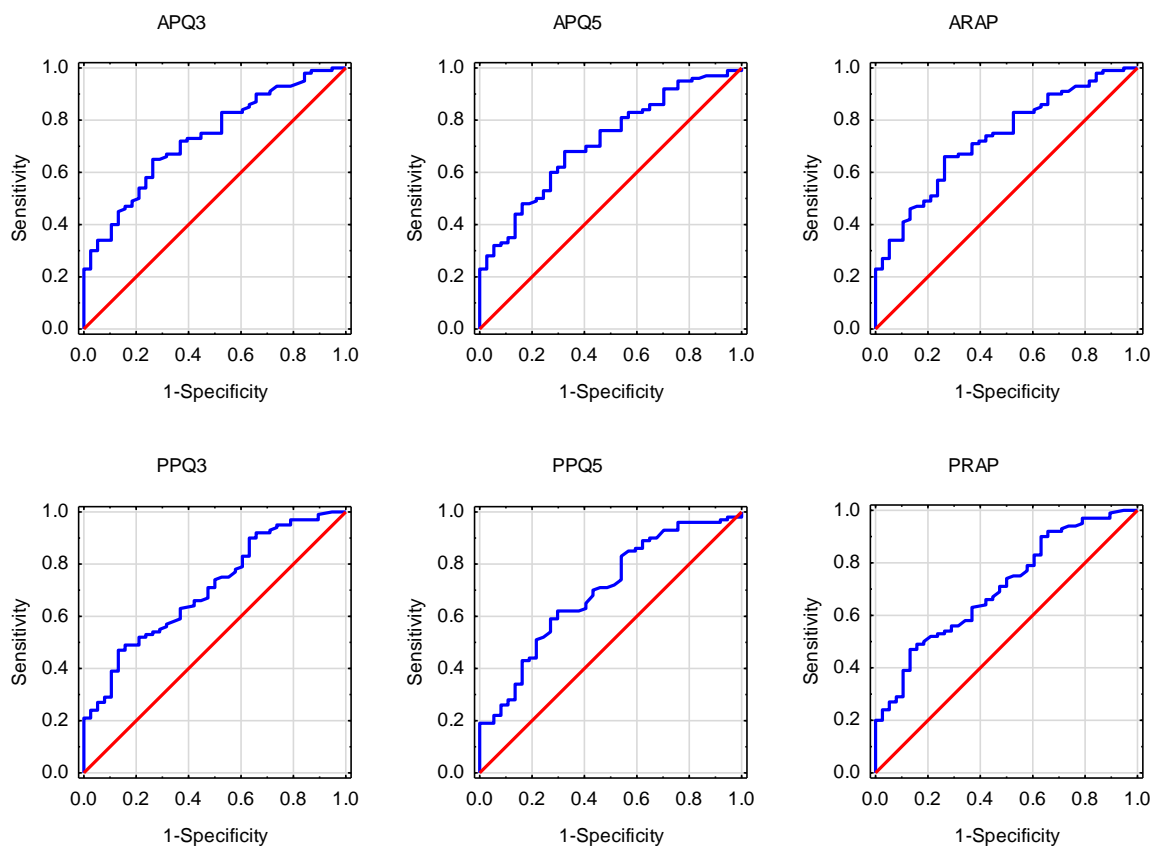


Normophonic vs any organic lesion

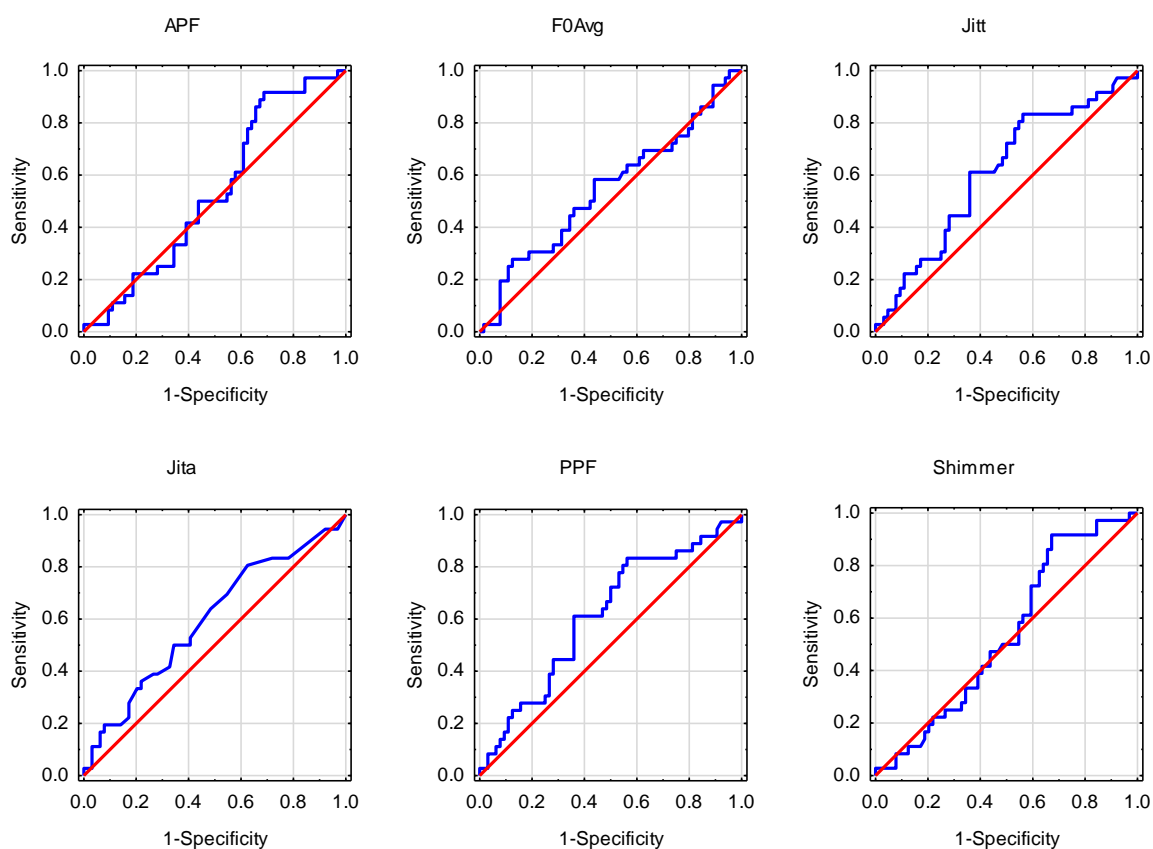


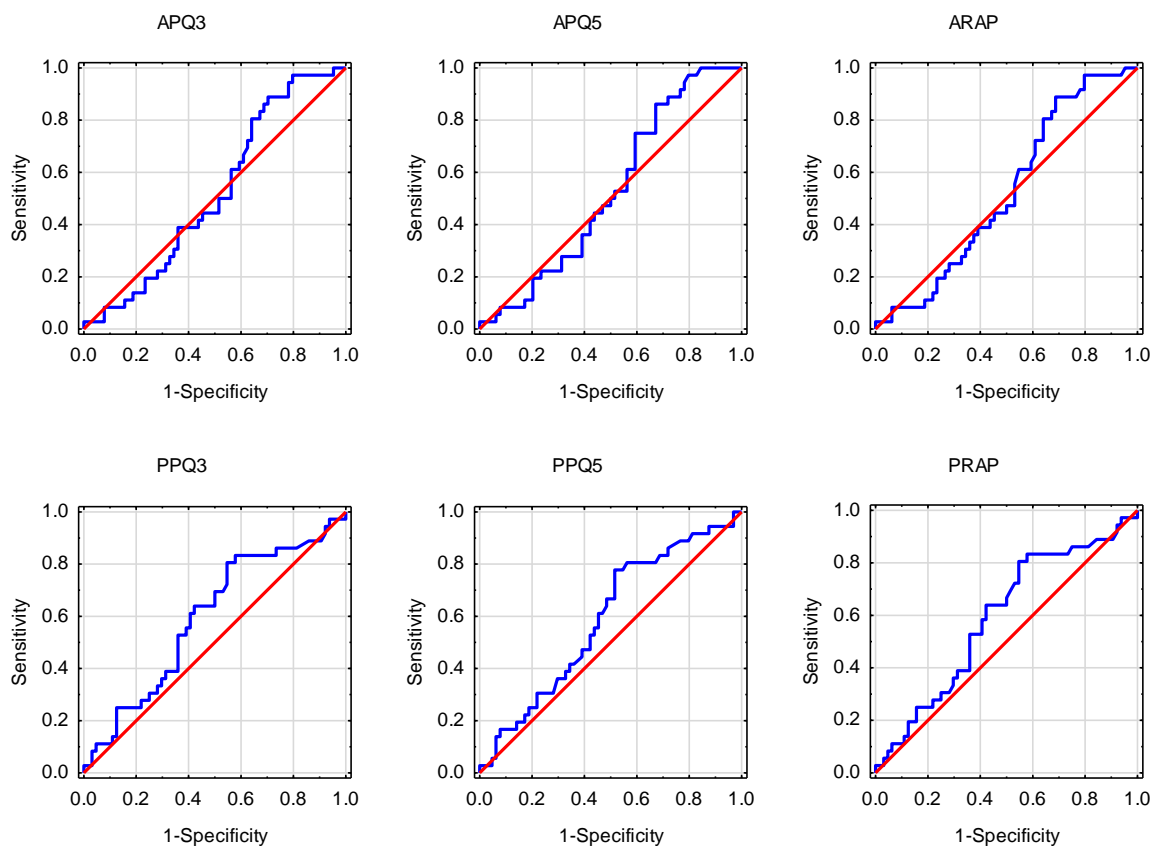


| | | | | | | |
|------------------------|-------|-------|---------------|---------------|-------|--------|
| Zmienna: Jita [ms]_2 | | | | | | |
| | AUC | SE | AUC Dolny 95% | AUC Górny 95% | z | p |
| 1 | 0.739 | 0.047 | 0.646 | 0.832 | 5.036 | 0.0000 |
| Zmienna: APQ3 [%]_2 | | | | | | |
| | AUC | SE | AUC Dolny 95% | AUC Górny 95% | z | p |
| 1 | 0.733 | 0.045 | 0.644 | 0.821 | 5.161 | 0.0000 |
| Zmienna: ARAP [%]_2 | | | | | | |
| | AUC | SE | AUC Dolny 95% | AUC Górny 95% | z | p |
| 1 | 0.731 | 0.045 | 0.642 | 0.819 | 5.099 | 0.0000 |
| Zmienna: APQ5 [%]_2 | | | | | | |
| | AUC | SE | AUC Dolny 95% | AUC Górny 95% | z | p |
| 1 | 0.715 | 0.047 | 0.624 | 0.807 | 4.616 | 0.0000 |
| Zmienna: Shimmer [%]_2 | | | | | | |
| | AUC | SE | AUC Dolny 95% | AUC Górny 95% | z | p |
| 1 | 0.712 | 0.046 | 0.621 | 0.803 | 4.577 | 0.0000 |
| Zmienna: APF [%]_2 | | | | | | |
| | AUC | SE | AUC Dolny 95% | AUC Górny 95% | z | p |
| 1 | 0.709 | 0.046 | 0.618 | 0.8 | 4.499 | 0.0000 |
| Zmienna: PPF [%]_2 | | | | | | |
| | AUC | SE | AUC Dolny 95% | AUC Górny 95% | z | p |
| 1 | 0.708 | 0.047 | 0.615 | 0.801 | 4.392 | 0.0000 |
| Zmienna: Jitt [%]_2 | | | | | | |
| | AUC | SE | AUC Dolny 95% | AUC Górny 95% | z | p |
| 1 | 0.708 | 0.048 | 0.615 | 0.801 | 4.372 | 0.0000 |

| | | | | | | |
|-----------------------|-------|-------|---------------|---------------|-------|--------|
| Zmienna: PRAP [%]_2 | | | | | | |
| | AUC | SE | AUC Dolny 95% | AUC Górny 95% | z | p |
| 1 | 0.705 | 0.048 | 0.612 | 0.798 | 4.312 | 0.0000 |
| Zmienna: PPQ3 [%]_2 | | | | | | |
| | AUC | SE | AUC Dolny 95% | AUC Górny 95% | z | p |
| 1 | 0.705 | 0.048 | 0.611 | 0.798 | 4.305 | 0.0000 |
| Zmienna: PPQ5 [%]_2 | | | | | | |
| | AUC | SE | AUC Dolny 95% | AUC Górny 95% | z | p |
| 1 | 0.697 | 0.05 | 0.6 | 0.795 | 3.963 | 0.0001 |
| Zmienna: F0Avg [Hz]_2 | | | | | | |
| | AUC | SE | AUC Dolny 95% | AUC Górny 95% | z | p |
| 1 | 0.405 | 0.06 | 0.288 | 0.521 | -1.6 | 0.1096 |

Benign vs Malignant organic lesion





| | | | | | | |
|------------------------|-------|-------|---------------|---------------|-------|--------|
| Zmienna: PPF [%]_2 | | | | | | |
| | AUC | SE | AUC Dolny 95% | AUC Górný 95% | z | p |
| 1 | 0.613 | 0.058 | 0.499 | 0.728 | 1.942 | 0.0521 |
| Zmienna: Jitt [%]_2 | | | | | | |
| | AUC | SE | AUC Dolny 95% | AUC Górný 95% | z | p |
| 1 | 0.612 | 0.058 | 0.497 | 0.726 | 1.91 | 0.0561 |
| Zmienna: Jita [ms]_2 | | | | | | |
| | AUC | SE | AUC Dolny 95% | AUC Górný 95% | z | p |
| 1 | 0.596 | 0.06 | 0.479 | 0.712 | 1.606 | 0.1082 |
| Zmienna: PPQ3 [%]_2 | | | | | | |
| | AUC | SE | AUC Dolny 95% | AUC Górný 95% | z | p |
| 1 | 0.594 | 0.059 | 0.479 | 0.71 | 1.599 | 0.1099 |
| Zmienna: PRAP [%]_2 | | | | | | |
| | AUC | SE | AUC Dolny 95% | AUC Górný 95% | z | p |
| 1 | 0.591 | 0.059 | 0.475 | 0.706 | 1.542 | 0.1230 |
| Zmienna: PPQ5 [%]_2 | | | | | | |
| | AUC | SE | AUC Dolny 95% | AUC Górný 95% | z | p |
| 1 | 0.589 | 0.058 | 0.475 | 0.704 | 1.529 | 0.1262 |
| Zmienna: F0Avg [Hz]_2 | | | | | | |
| | AUC | SE | AUC Dolny 95% | AUC Górný 95% | z | p |
| 1 | 0.546 | 0.062 | 0.425 | 0.666 | 0.744 | 0.4567 |
| Zmienna: Shimmer [%]_2 | | | | | | |
| | AUC | SE | AUC Dolny 95% | AUC Górný 95% | z | p |
| 1 | 0.537 | 0.058 | 0.423 | 0.65 | 0.637 | 0.5244 |

| | | | | | | |
|---------------------|-------|-------|---------------|---------------|-------|--------|
| Zmienna: APF [%]_2 | | | | | | |
| | AUC | SE | AUC Dolny 95% | AUC Górny 95% | z | p |
| 1 | 0.536 | 0.058 | 0.422 | 0.649 | 0.613 | 0.5401 |
| Zmienna: APQ5 [%]_2 | | | | | | |
| | AUC | SE | AUC Dolny 95% | AUC Górny 95% | z | p |
| 1 | 0.529 | 0.058 | 0.416 | 0.642 | 0.505 | 0.6136 |
| Zmienna: ARAP [%]_2 | | | | | | |
| | AUC | SE | AUC Dolny 95% | AUC Górny 95% | z | p |
| 1 | 0.525 | 0.058 | 0.412 | 0.638 | 0.432 | 0.6658 |
| Zmienna: APQ3 [%]_2 | | | | | | |
| | AUC | SE | AUC Dolny 95% | AUC Górny 95% | z | p |
| 1 | 0.521 | 0.058 | 0.408 | 0.635 | 0.371 | 0.7105 |