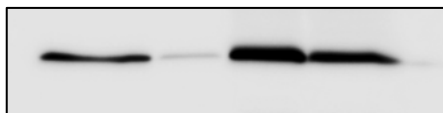
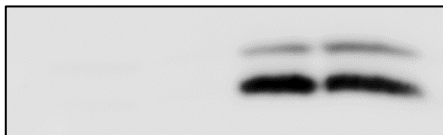


## PANC-1 cells

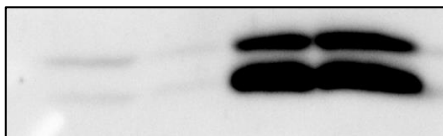
AD80 ( $\mu$ M)	-	1	-	1
Bafilomycin A1 (nM)	-	-	10	10



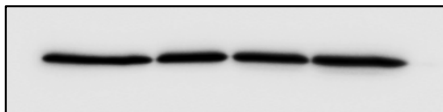
**IB: SQSTM1/p62**  
62 kDa



**IB: LC3B**  
Short exposure  
14,19 kDa



**IB: LC3B**  
Long exposure  
14,19 kDa



**IB:  $\alpha$ -tubulin**  
55 kDa