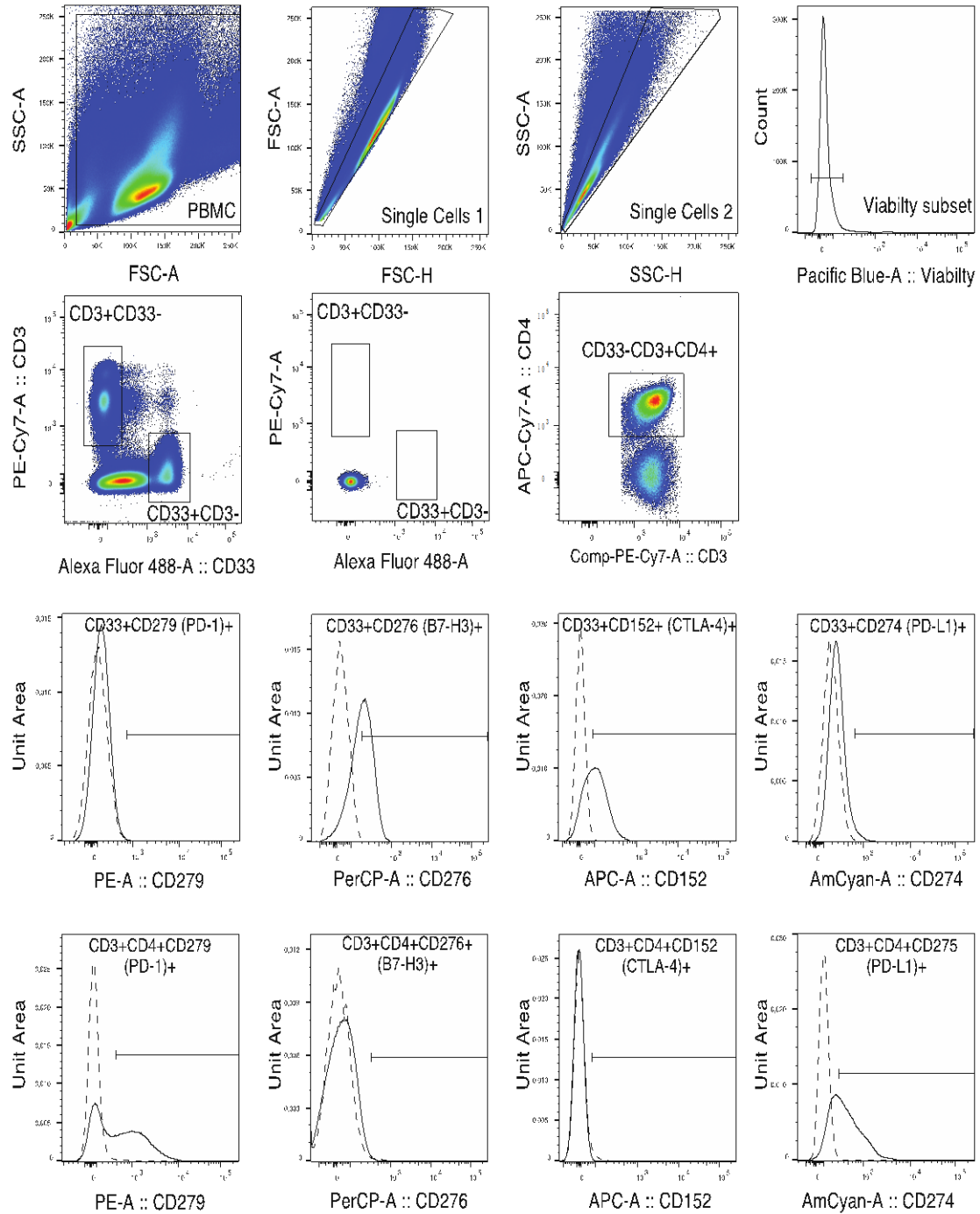


**Supplementary Table S1.** Panel of antibodies used in flow cytometry.

Antibody and Fluorochrome	Producer	Clone	Volume per 200 $\mu$ L
CD33 FITC	Becton Dickinson	P67.6	4 $\mu$ L
CD3 PE-Cy7	BioLegend	UCHT1	2 $\mu$ L
CD152 (CTLA-4) APC	Becton Dickinson	BNI3	5 $\mu$ L
CD276 (B7-H3) PerCP- Cy5.5	BioLegend	MIH42	4 $\mu$ L
CD274 (PD-L1) BV510	BioLegend	29E2A3	5 $\mu$ L
CD279 (PD-1) PE	Becton Dickinson	EH12.1	0,5 $\mu$ L



**Supplementary Figure S1.** Gating strategy implemented in the study panel.