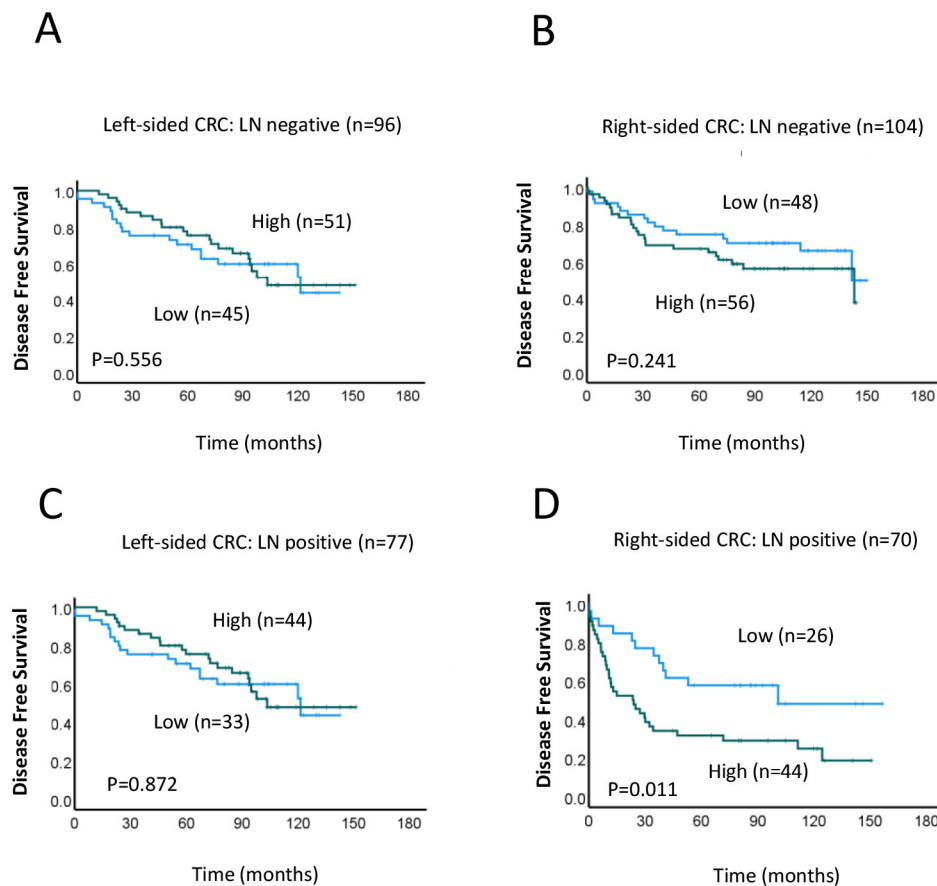


Supplementary Materials: Prognostic significance of MRE11 overexpression in colorectal cancer patients

Vincent Ho ^{1,2, ¶, *}, Liping Chung ^{1,2, ¶}, Kate Wilkinson ^{2,3}, Vivienne Lea^{1,3}, Stephanie H Lim ^{2,4,5}, Askar Abubakar ^{1,2}, Weng Ng ⁵, Mark Lee ⁶, Tara L Roberts ^{1,2,7}, Wei Chua ^{1,5,8} and Cheok Soon Lee ^{1,2,3,7, 9}



Supplementary Figure S1. Association between MRE11 expression and survival, based on location of the primary colorectal cancer (CRC) in relation to lymph node (LN) involvement. (A–D) Kaplan–Meier analysis of disease-free survival in patients with high (green line) or low (blue line) MRE11 expression in left-sided (A, LN-negative; C, LN-positive) and right-sided (B, LN-negative; D, LN-positive) CRC.