

Supplementary Materials

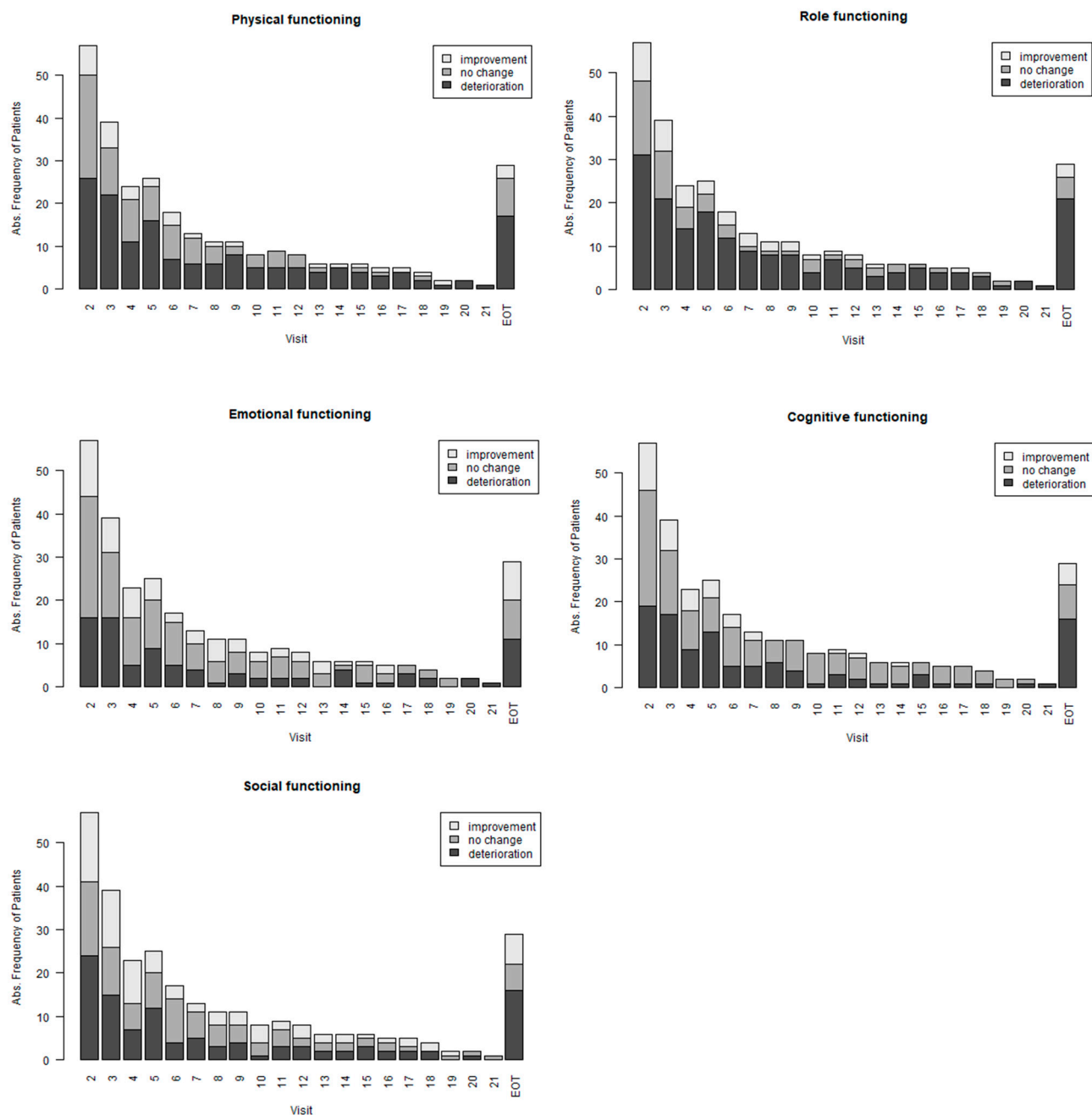
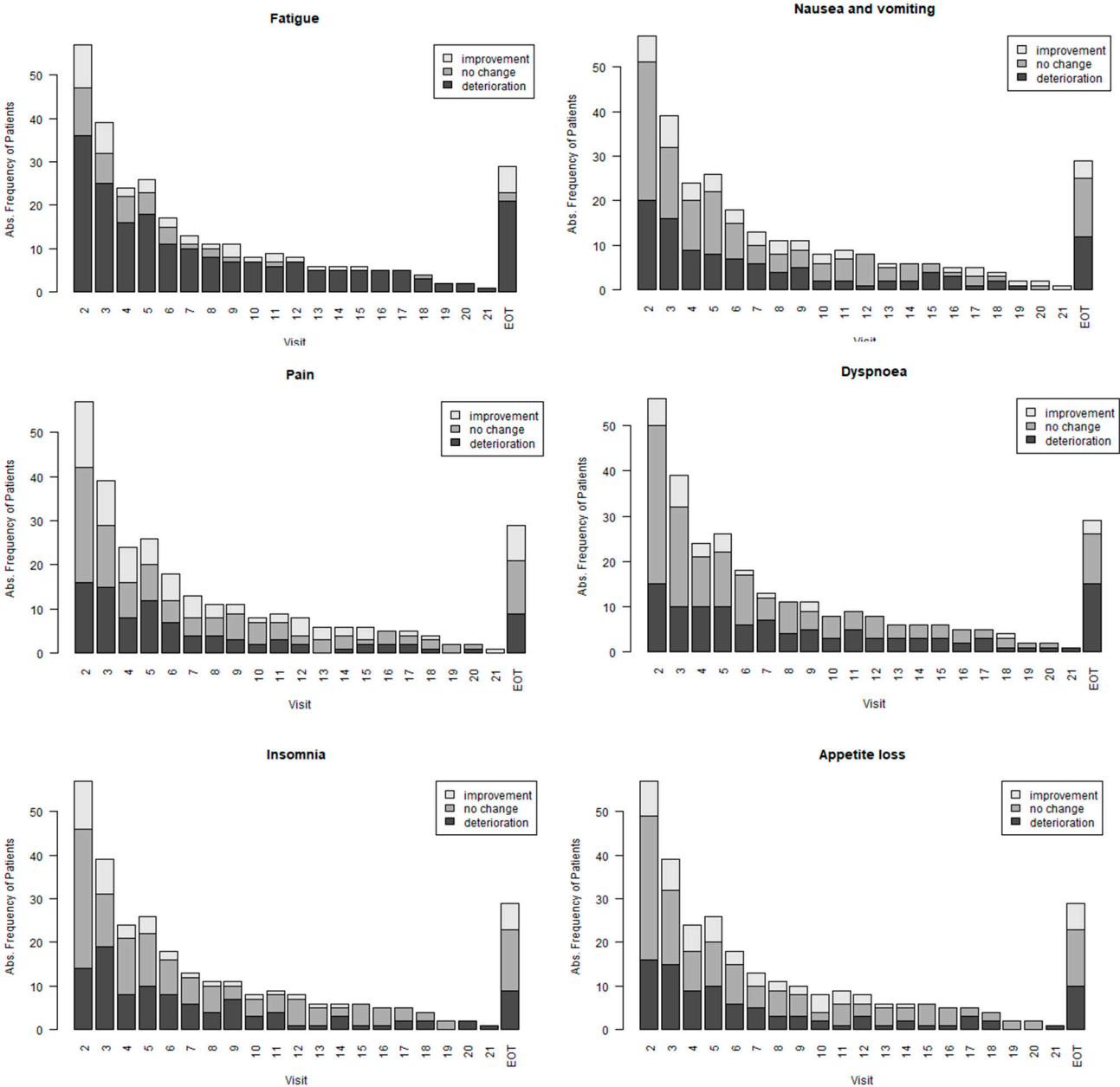


Figure S1. Changes in QLQ-C30 functional scales over the treatment period. A change in score of >10 is regarded as clinically relevant deterioration or improvement. Please note that the graph represents mean data for any visit where number of patients differs from visit to visit. Further, EOT is not an exactly defined time point and differs in time from patient to patient.



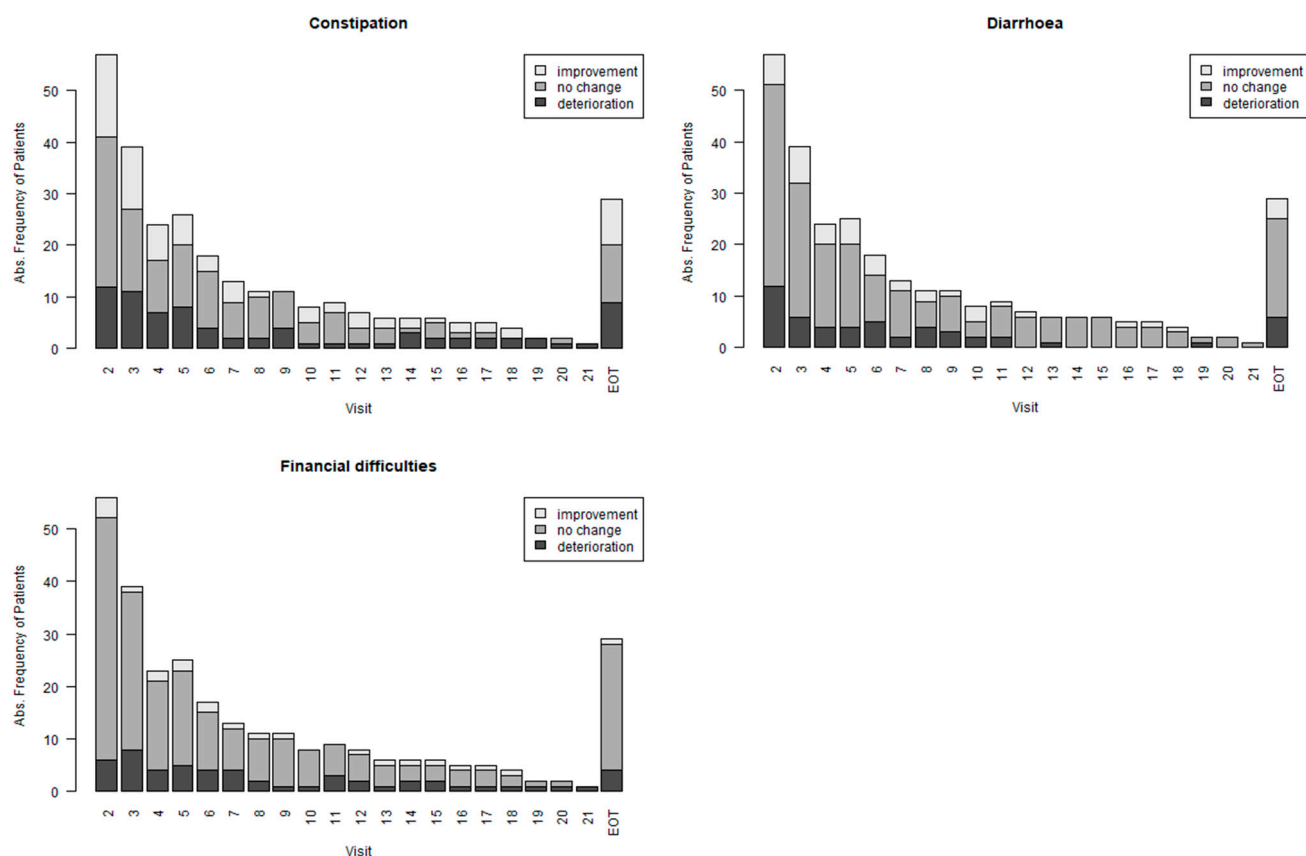
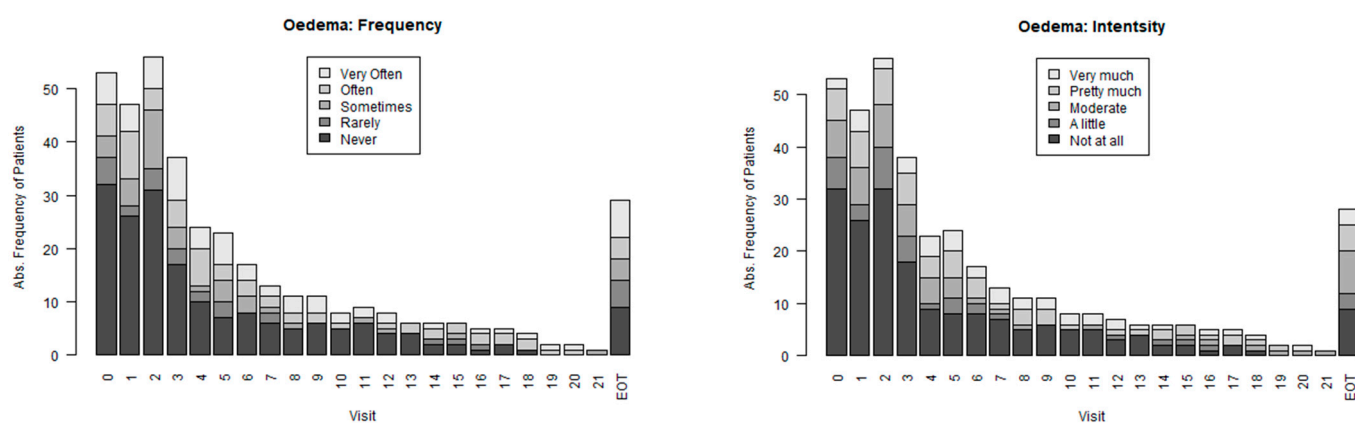
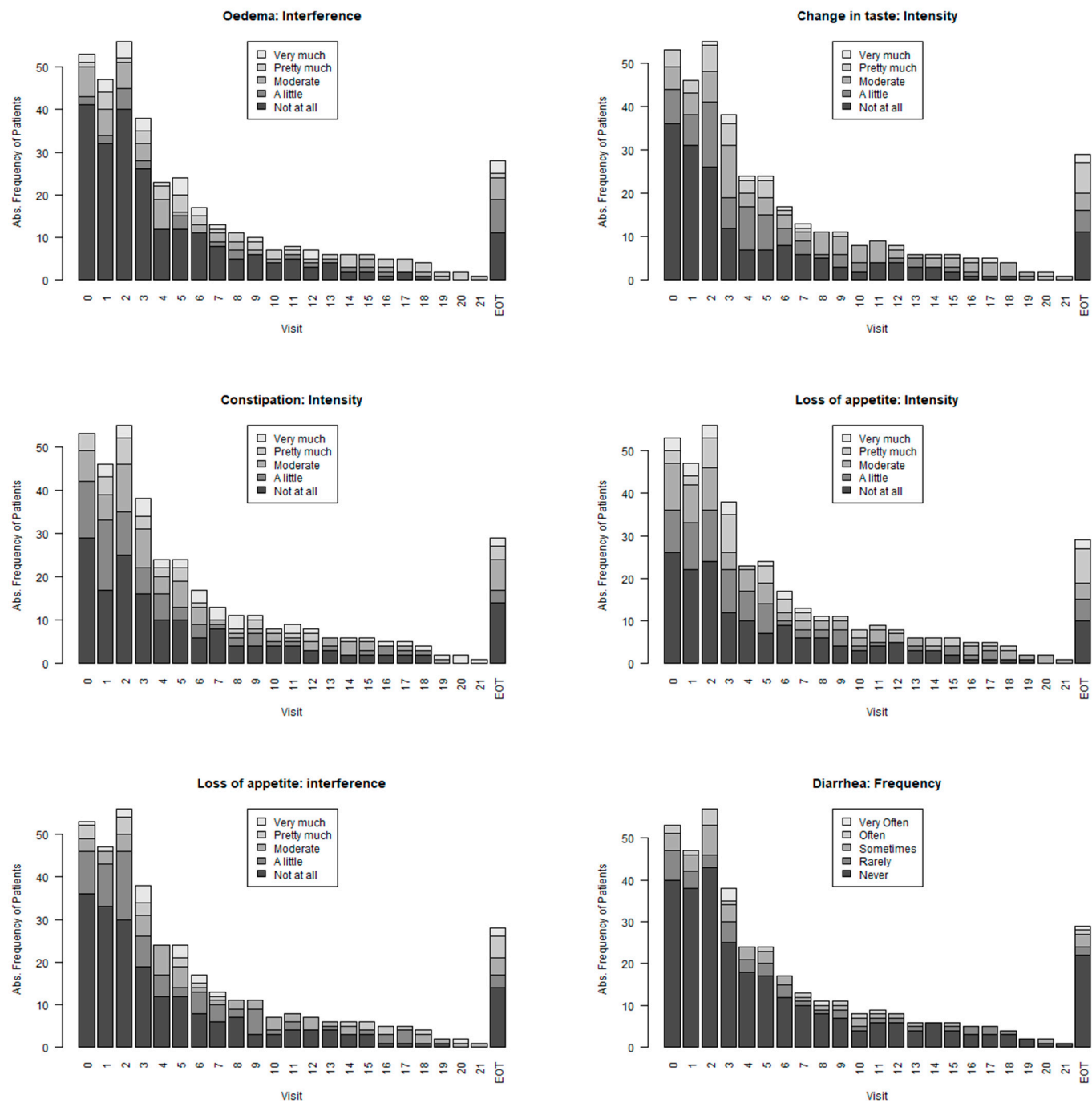
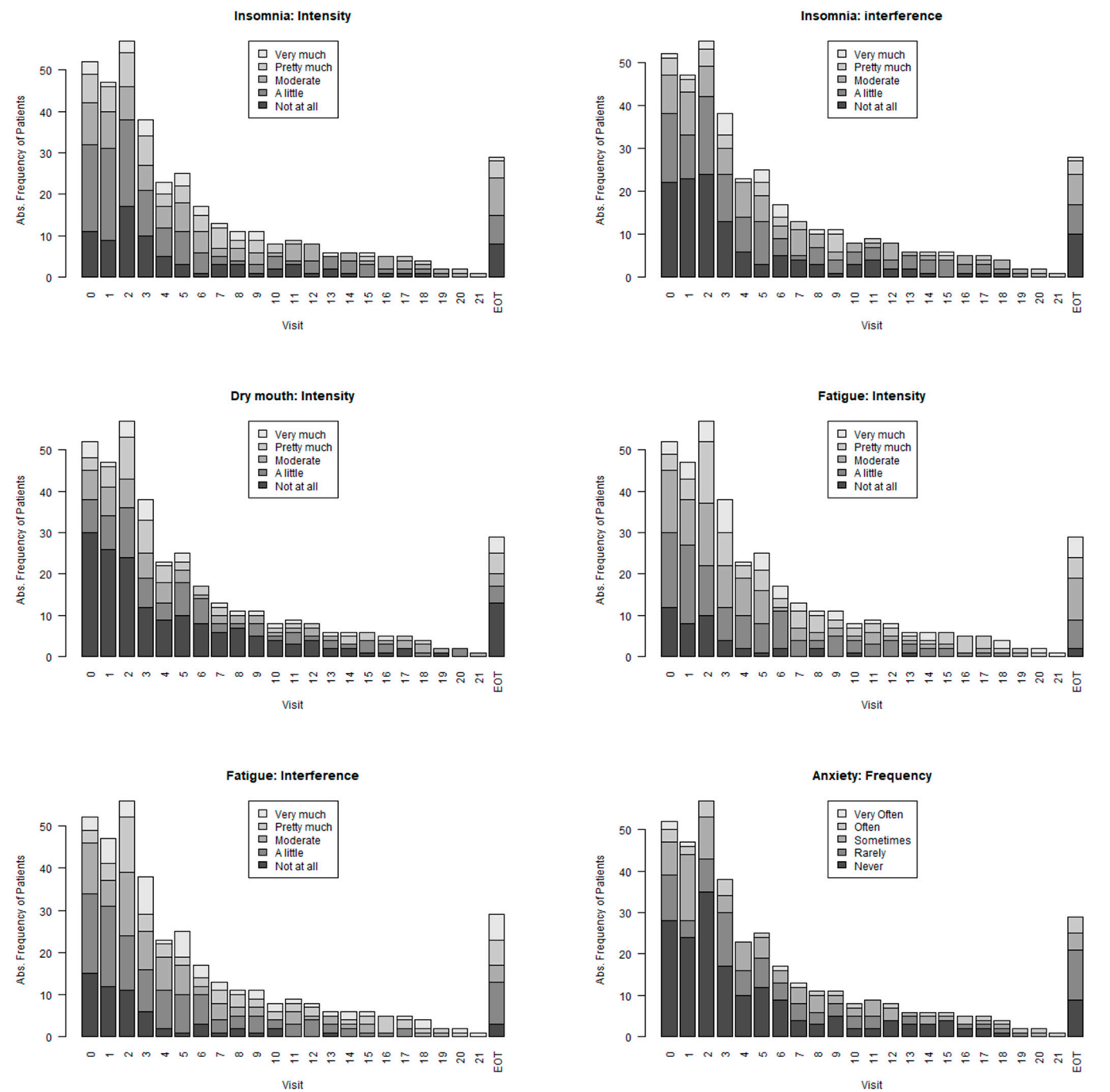
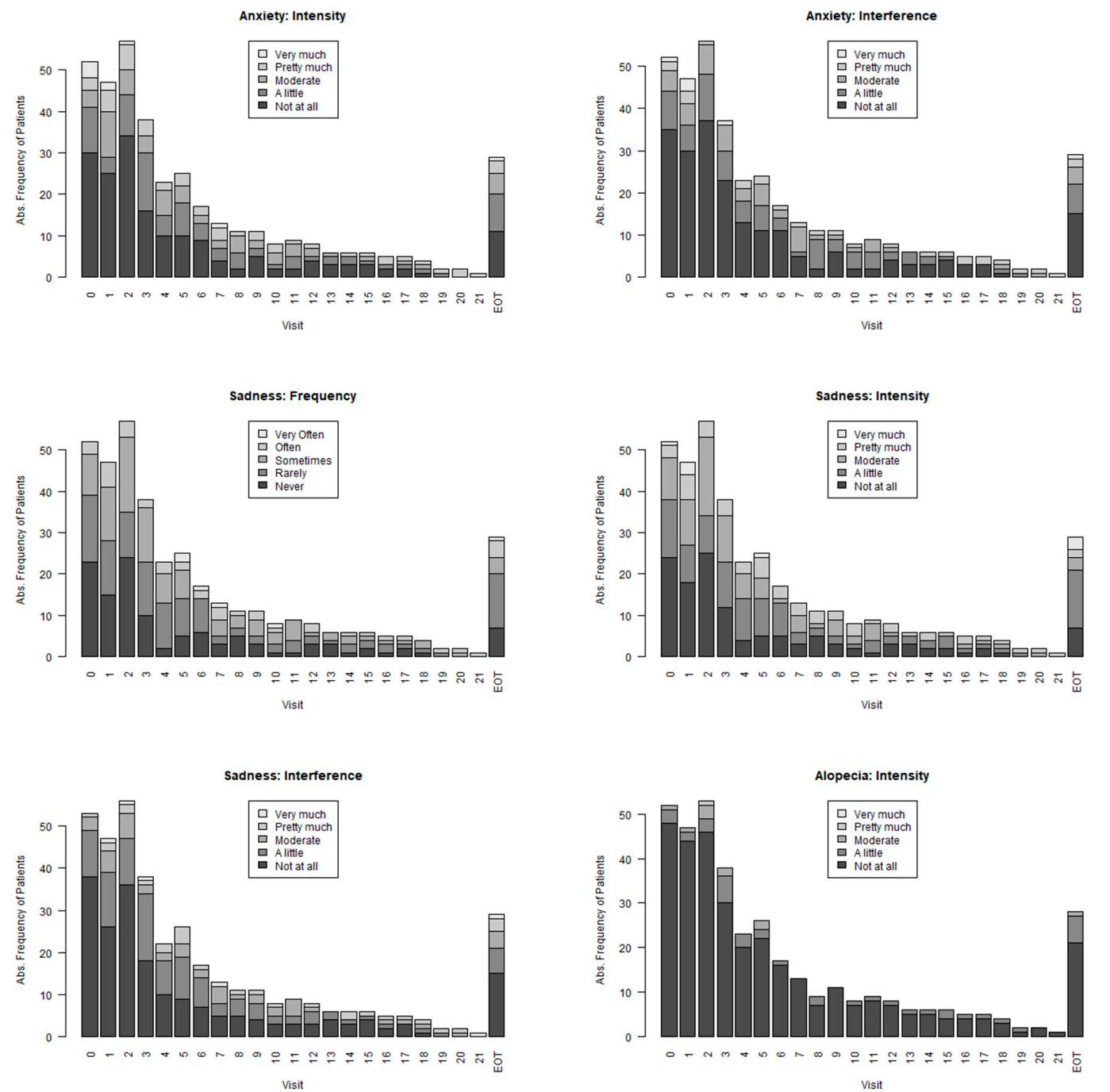


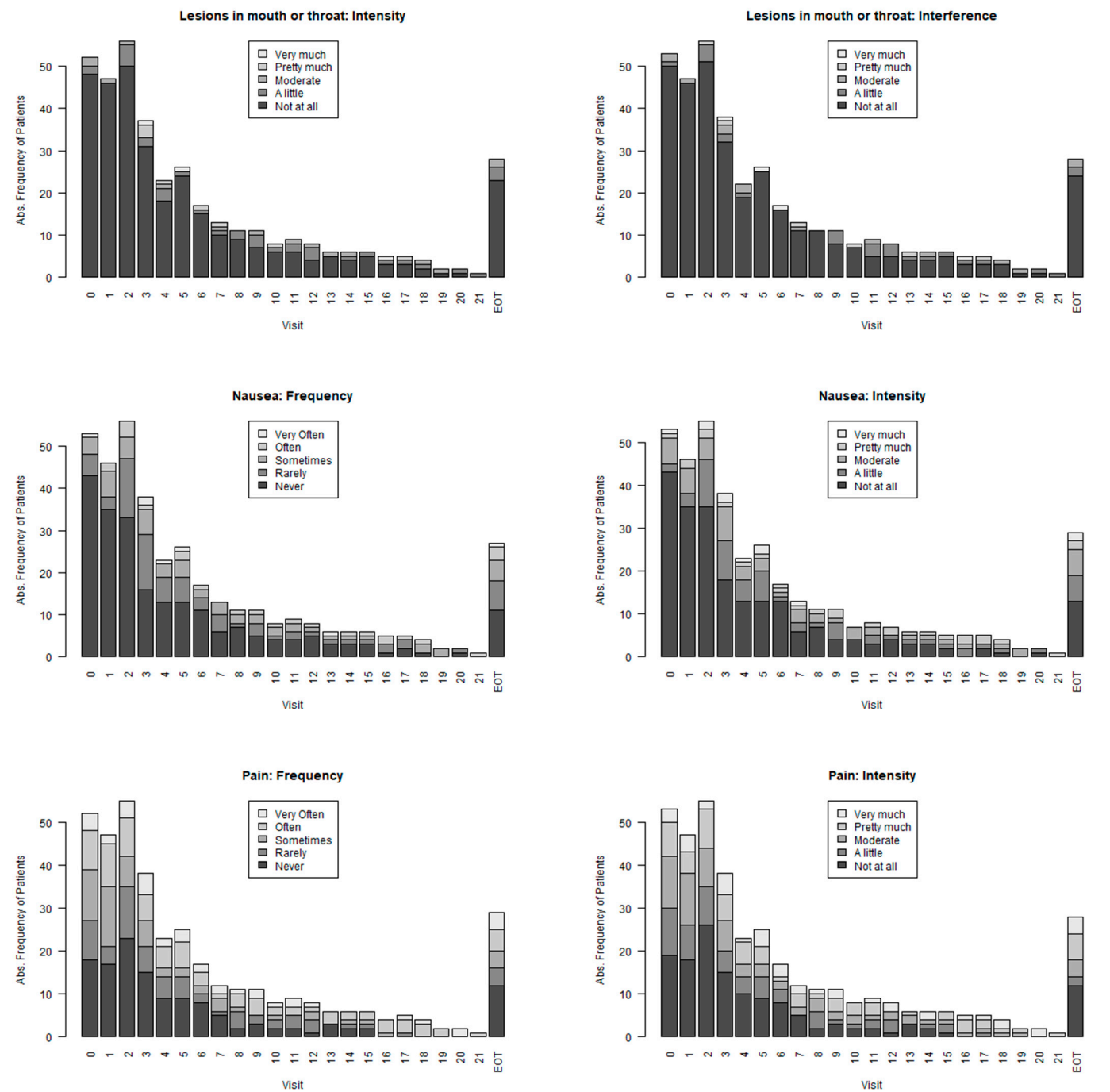
Figure S2. Changes in QLQ-C30 symptom scales/items over the treatment period. A change in score of >10 is regarded as clinically relevant deterioration or improvement. Please note that the graph represents mean data for any visit where number of patients differs from visit to visit. Further, EOT is not an exactly defined time point and differs in time from patient to patient.

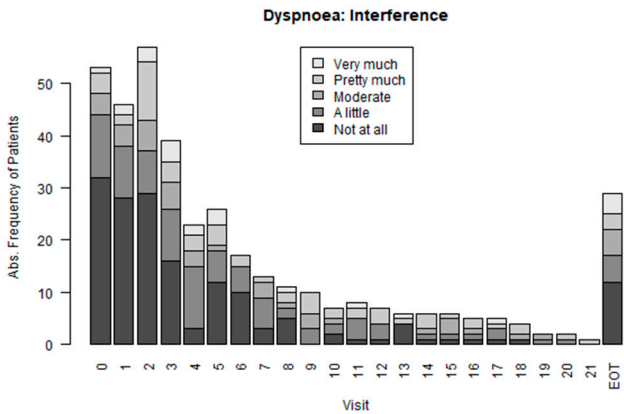
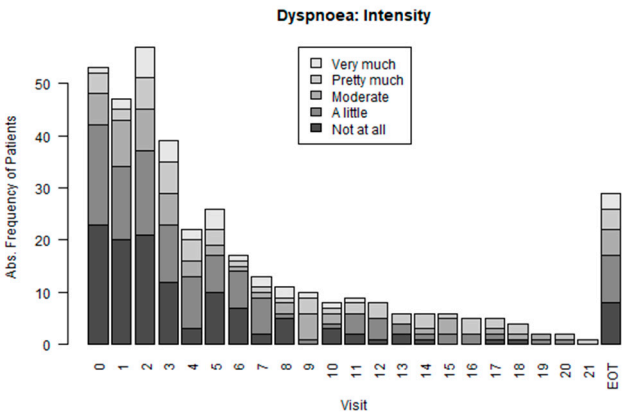
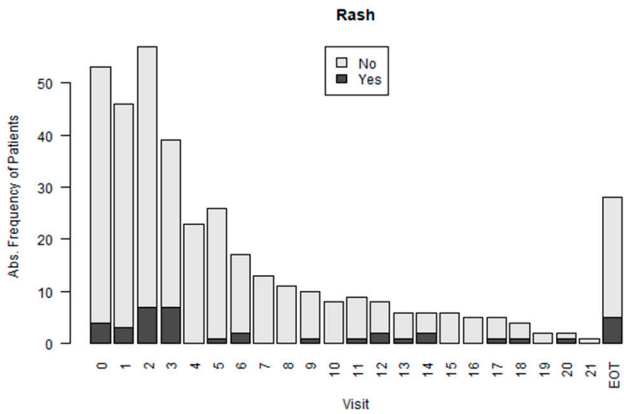
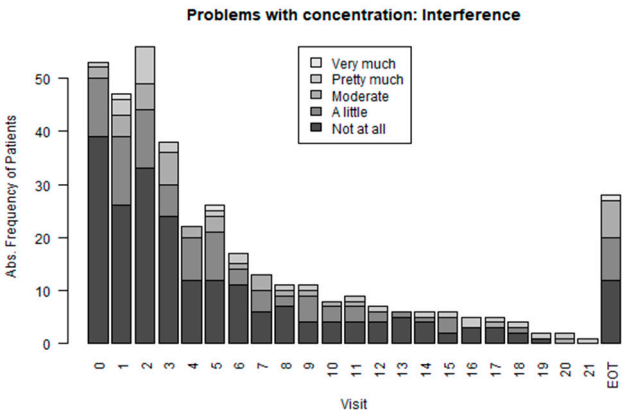
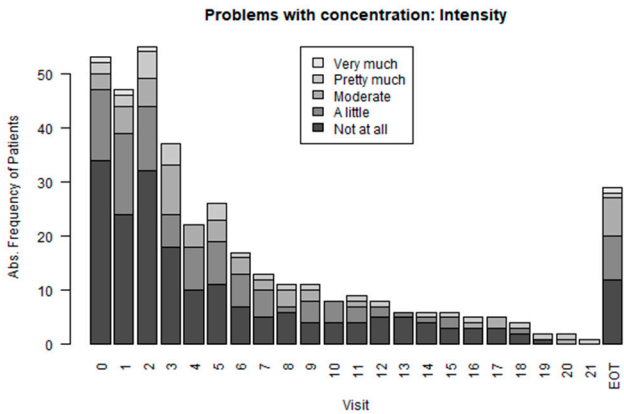
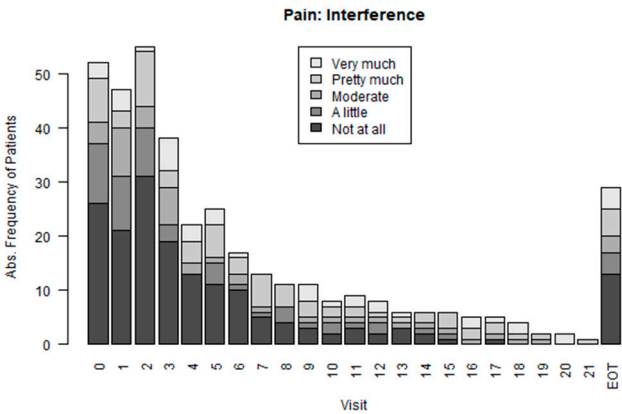












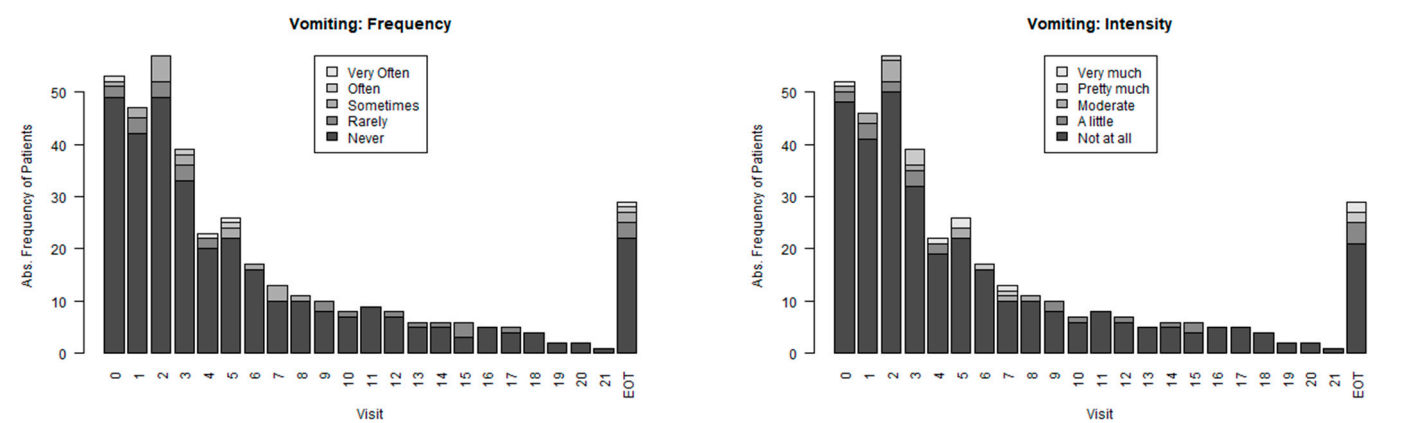


Figure S3. PRO-CTCAE Bar plots by different parameters.